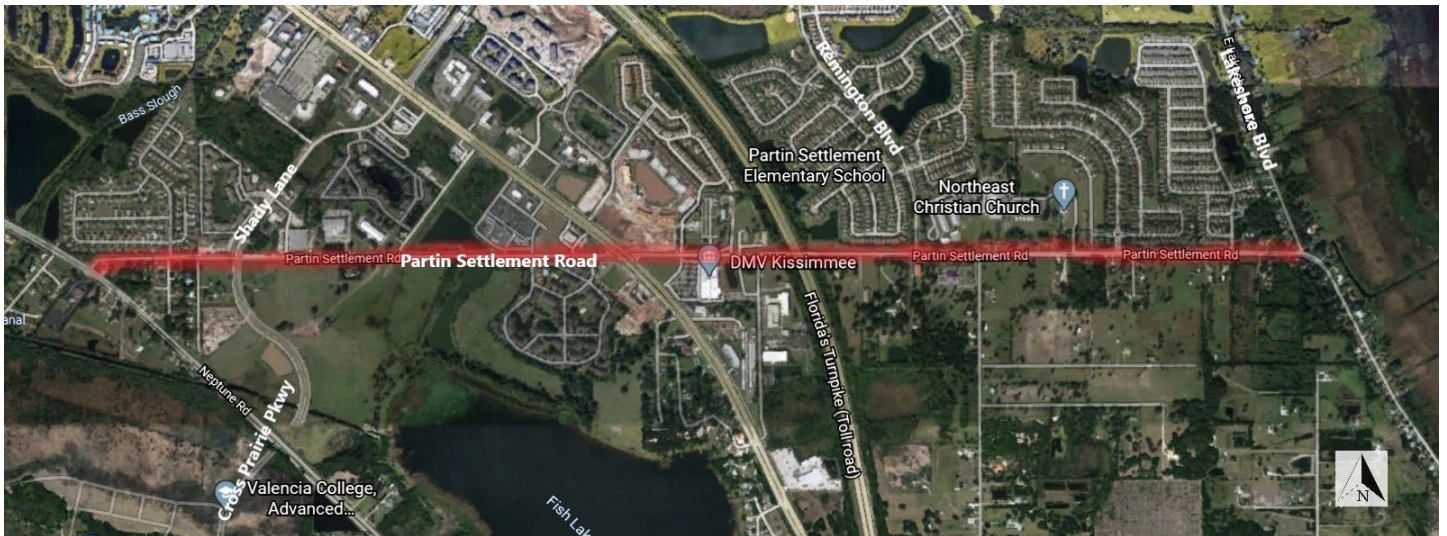




Public Involvement Plan

Partin Settlement Road Alternatives Evaluation From Neptune Road to Lakeshore Boulevard

July 2020



**Partin Settlement Road Widening
Alternatives Evaluation
Public Involvement Plan**

In accordance with Part 1, Chapter 11 of the **Project Development and Environment (PD&E) Manual**, this Public Involvement Plan is submitted to Osceola County for its review and approval.

Submitted By: Greg Smith, P.E.
Consultant Project Manager
Johnson, Mirmiran & Thompson, Inc.

Date: July 2020

Approved By: _____
(title)

Date: _____

The purpose of this Public Involvement Plan (PIP) is to assist in providing information to and obtaining input from concerned citizens, agencies, private groups (residential/business), and governmental entities. The overall goal of this plan is to help ensure that the study reflects the values and needs of the communities it is designed to benefit. A schedule of events and a list of documentation exhibiting compliance with these procedures are included.

This plan is in compliance with the Florida Department of Transportation’s *Project Development and Environment (PD&E) Manual, Part 1, Chapter 11*.

I. DESCRIPTION OF PROPOSED IMPROVEMENT

Project Number: PS-20-11504-DG
Project Limits: Partin Settlement Road from Neptune Road
to Lakeshore Boulevard
Proposed Activity: Alternatives Evaluation

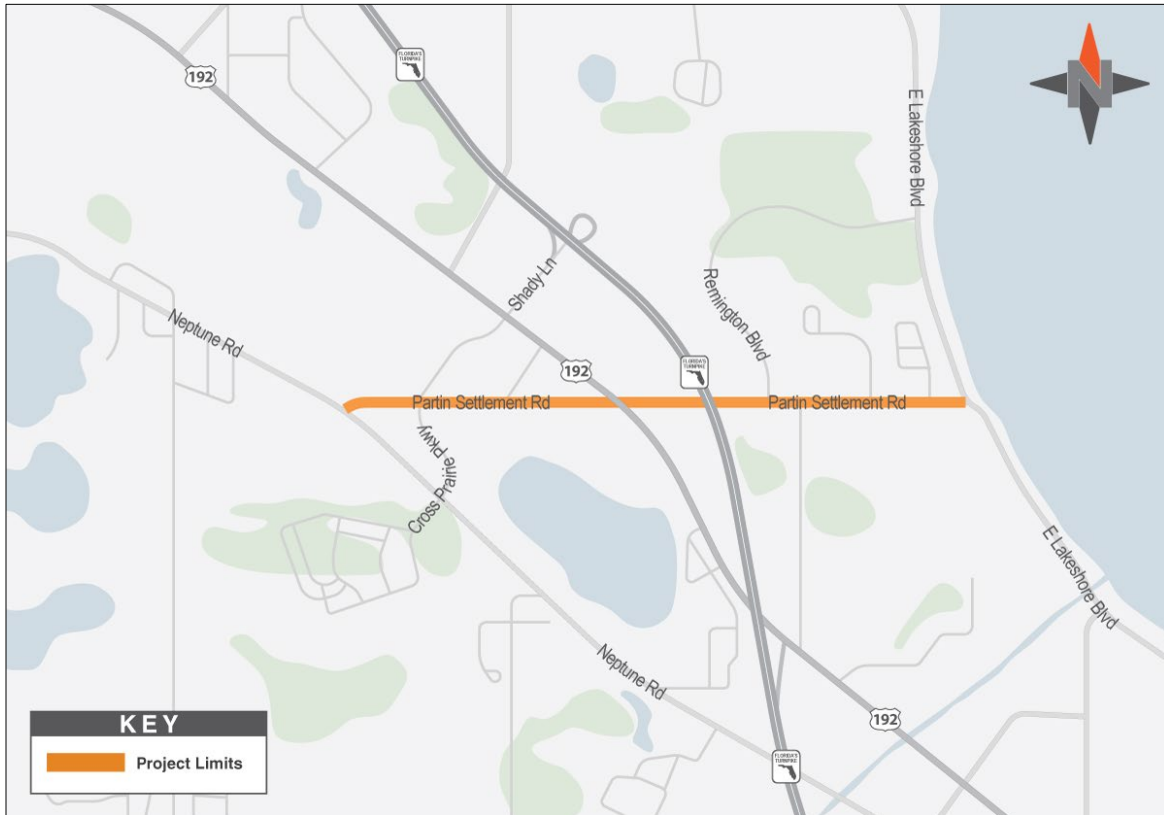
Project Contact Information

For additional information regarding this project contact:

Conroy Jacobs, AICP, MPA
Osceola County Project Manager
Transportation & Transit Dept.
1 Courthouse Square, Ste. 3100
Kissimmee, FL 34741
407-742-0557
Conroy.jacobs@osceola.org

Greg Smith, P.E.
Consultant Project Manager
Johnson, Mirmiran & Thompson, Inc.
615 Crescent Executive Court, Suite 106
Lake Mary, FL 32746
407-562-4956
gsmith@jmt.com

Project Location Map:



II. PROJECT BACKGROUND

Osceola County is actively addressing the significant growth the County has experienced over the past few years. In particular, residential activity in Osceola County has increased by more than 4% each year, which may influence the need for additional capacity on roadways like Partin Settlement Road and improved access to the Florida's Turnpike. Developments affecting this project include Kindred and Tohoqua.

In late 2019, the Osceola County Board of County Commissioners refinanced bonds originally used to build the Osceola Parkway, in order to advance design and construction of five key roadways. Partin Settlement Road is one of these roadways and the County's goals include easing congestion, improving traffic flow, and providing multi-modal opportunities.



III. PROJECT GOALS

This project will be conducted in two phases. Part A of the project will evaluate alternatives to widen and reconstruct the existing two-lane Partin Settlement Road from Neptune Road (C.R. 525) to Lakeshore Boulevard, a distance of 2.7 miles. Part A will examine future traffic needs and study potential alignments and typical sections to address the above goals.

After approval of the preferred alignment and typical sections, Part B will proceed with the design for the preferred alternative which is anticipated to include multi-modal accommodations, as determined in the alternatives study, associated drainage improvements and stormwater ponds, modification of the signalized intersections at Neptune Road, Shady Lane/Cross Prairie Parkway, U.S. 192, Remington Boulevard, and Lakeshore Boulevard.

The project will also consist of Intelligent Transportation System (ITS) improvements, modifications at the double box bridge culvert over Fish Lake Canal, and landscaping provisions. There are no railroad crossings along the project limits, though there is a major bridge over Florida's Turnpike, just east of the intersection of Partin Settlement Road and U.S. 192 which will be closely coordinated with the Florida's Turnpike Enterprise.

IV. IDENTIFICATION OF ELECTED OFFICIALS AND AGENCIES

The following local, regional and state agencies having a concern in this project due to jurisdictional review or expressed interest have been identified and will be notified during the Alternatives Evaluation. As other concerned public agencies are identified throughout the study, they also will be listed and notified.

State:

Florida Department of State, Division of Historical Resources

Florida Department of Agriculture and Consumer Services

- Vincent Morris
- Brian Camposano
- Mark Kiser

Florida Department of Environmental Protection

- Chris Stahl

Florida Department of Fish and Wildlife Conservation Commission

- Jason Hight
- Jennifer Goff

Florida Department of Transportation (FDOT)

- Jason Watts, Director, Office of Environmental Management

Florida's Turnpike Enterprise

- Ms. Nicola Liquori, Executive Director
- Ms. Christina Colon, Director of Transportation Development
- Ms. Maria Connolly, Director of Transportation Operations
- Ms. Snehal Ambare, P.E., Project Manager for FTE Widening

FDOT District Five

- Jared Perdue / District Five Secretary

- Loreen Bobo / Director of Transportation Development
- Jim Stroz / Traffic Operations Engineer
- John Hatfield / Maintenance Engineer
- John Tyler / Construction Engineer
- Kellie Smith / Planning Administrator

Regional:

Chamber of Commerce: Kissimmee/Osceola County

- Jose Figueroa
- Christina Pilkington
- John Newstreet
- Cindy Lewis

Central Florida Regional Transportation Authority (Lynx)

- James Harrison, CEO
- Jeff Reine, Senior Project Manager

South Florida Water Management

- Trisha Stone

Toho Water Authority

- Edwin Matos
- Robert Pelham
- Todd Swingle

MetroPlan Orlando

- Gary Huttman, AICP / Executive Director
- Virginia Whittington / Director of Regional Partnerships
- Nick Lepp, AICP CTP / Director of Transportation Planning
- Eric Hill / Director, Transportation System Management & Operations

East Central Florida Regional Planning Council

- Hugh Harling / Executive Director
- Tara McCue, AICP / Director of Planning and Community Development

Native American Tribes:

Miccosukee Tribe of Indians of Florida
 Muscogee (Creek) Nation
 Poarch Band of Creek Indians of Alabama
 Seminole Nation of Oklahoma
 Seminole Tribe of Florida

Local Elected and Appointed Officials:

Federal Delegation:

The Honorable Marco Rubio, U.S. Senator
 The Honorable Rick Scott, U.S. Senator
 The Honorable Darren Soto, U.S. Representative, District 9

State Delegation:

The Honorable Victor Torres, Senator, District 15
 The Honorable Mike La Rosa, Representative, District 42
 The Honorable John Cortes, Representative, District 43

Osceola County:

Mr. Don Fisher, County Administrator

The Honorable Peggy Choudhry, Commissioner, District 1
 The Honorable Viviana Janer, Chair/Commissioner, District 2
 The Honorable Brandon Arrington, Commissioner, District 3
 The Honorable Cheryl Grieb, Vice-Chair/Commissioner, District 4
 The Honorable Fred Hawkins, Jr., Commissioner, District 5
 The Honorable Armando Ramirez, Clerk of the Circuit Court
 Ms. Danielle Slaterpryce, Public Works Director
 Mr. Raymond Stangle, County Engineer
 The Honorable Russ Gibson, County Sheriff
 Chief Larry Collier, Jr., Osceola County Fire
 Dr. Debra Pace, Superintendent, School District of Osceola County
 Mr. Arby Creach, Transportation Director, School District of Osceola County

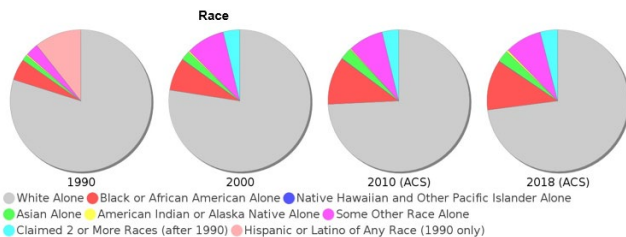
V. IDENTIFICATION OF AFFECTED COMMUNITIES AND STAKEHOLDERS

This project is in unincorporated Osceola County, southeast of Kissimmee, south of Buena Ventura Lakes, west of East Lake Tohopekaliga and north of the City of St. Cloud.

The project limits have a mix of residential areas, commercial tracts, and undeveloped properties. Many of the parcels have direct driveway connections to Partin Settlement Road. The project corridor includes a major intersection with U.S. 192 and a bridge over the Florida’s Turnpike mainline. There is also a sidewalk along much of the north side of the roadway, and multi-modal improvements included in the project. Lynx has one route near the project - Route 10 runs on U.S. 192 from Simpson Boulevard to just past the Florida’s Turnpike.



While alleviating congestion in the area would be a highly welcomed outcome of the project, there may be concerns about existing driveways and access, as well as project impacts to homes located within 100 feet of the existing edge of roadway in Neptune Pointe, Remington and Lago Buendia. There are also some properties that house animals (horses, goats, etc.) that are adjacent to the project.



Osceola County is the state’s second fastest growing county, with a 31-percent increase in population since 2010. According to U.S. Census data and a 2018 American Community Survey, nearly 55 percent of residents identify as Latino or Hispanic. The area also saw an influx of new residents from Puerto Rico after Hurricane Maria. Additionally, almost 10 percent of residents say they speak English not well or not at all, and fewer than 10 percent report speaking English well. Because of the large Spanish-speaking population, public outreach will be written in both English and Spanish.

The Sociocultural Data Report (SDR), a copy of which is attached, also shows the median household income and median housing price are below the Florida average. About 15 percent of households live below the poverty line. The county’s median age of 35 is also lower than the state median age of 42.

The project team may hold a public meeting in a facility near the project limits or a virtual meeting,

or a combination of both, depending on status of COVID-19. All notification materials will be translated into Spanish and an interpreter will be attending all meetings.

The following local, state, and national public interest groups or organizations having a direct or expressed interest in the project study have been identified and will be notified by the County:

Neighborhoods:

- Neptune Pointe
- Walden Park
- Cobblestone of Kissimmee
- Amber Pointe
- Remington
- Lago Buendia
- Legacy Park

Businesses:

- Chevron
- Raskin Dance Studio and Music School
- UFP Technologies
- Sterling Silver Scape and Sod
- Hair Genius Barbershop
- Evolution Nail and Spa
- Cali Smoke Shop
- Fresh Coat Painting
- Jimmy Hickman Excavating
- Mastrew Quality Studio, LLC
- Mar-Lee Realty
- Partin Village Shopping Center
- Big Toho Airboat Rides
- Nationwide Vision Center
- FLA Sterling Investments
- Blake and Blake Associates
- Great Clips
- Partin Liquors
- Cricket / Alo Wireless
- CVS
- Central Mini Storage

Restaurants/Grocery Stores:

- Publix
- Subway
- China King
- Antonio's Pizza
- Dunkin Donuts
- Twistee Treat
- Wendy's

- PM Wells Charter Academy
- School Board of Osceola County
- Education Foundation of Osceola Inc.
- Mathnasium

Churches:

- Restore Your Path for Christ
- Life Assembly of God
- Gateway Baptist Church
- Ministerio Casa Cristiana Jesus Worship Center
- Christian Life Church
- Centro Cristiano Dios De Pactos Florida
- Northeast Christian Church of Kissimmee
- Faith Community Church

Medical Facilities:

- Night Lite Pediatrics
- Urgent Care
- Quest Diagnostics
- Coast Dental

Others:

- Ice Factory of Central Florida
- Osceola County Supervisor of Elections
- Osceola County Sheriff
- Osceola County Tax Collector
- DMV of Kissimmee
- Osceola County Board of Realtors

Schools:

VI. OUTREACH ACTIVITIES



As part of the outreach strategies employed during the Alternatives Evaluation, the following media outlets may be contacted and encouraged to share project information with residents and other interested stakeholders. Media contact will be coordinated through the County.

Newspapers:

Orlando Sentinel – Osceola County Edition and El Sentinel
633 N. Orange Avenue
Orlando, FL 32801

Osceola News Gazette
21 W. Monument Avenue
Kissimmee, FL 34744

Television:

WESH News 2
1021 N. Wymore Road
Winter Park, FL 32789
407-645-2222
Wesh2news@gmail.com

WKMG News 6
4466 N. John Young Parkway
Orlando, FL 32804
407-521-1323
desk@wkmg.com

WFTV News 9
490 E. South Street
Orlando, FL 32801
407-841-9000
news@wftv.com

WOFL News 35
35 Skyline Drive
Lake Mary, FL 32746
407-741-5027
woflfox35news@foxtv.com

Radio:

WDBO Radio
news@wdbo.com

WMFE Radio
407-273-2300
newsroom@wmfe.org

In addition to working with the media, a number of different notification techniques will be used throughout the project development process. A brief description of these techniques is provided below.

Public Notifications:

- **News/Press Releases:** News/press releases will be submitted to Osceola County 14 days prior to each public meeting for distribution to local media outlets.
- **Advertisements:** A newspaper display advertisement announcing the public meeting will be placed in the *Osceola News Gazette* 10 to 14 days before the meeting.
- **Public Notices:** Notifications will be provided to Osceola County for posting on the County website and distributed using Nextdoor and social media channels. Flyers will also be made available to organizations such as neighborhood/civic groups and FDOT to publish in existing newsletters and on websites.



Any such correspondence will be coordinated through the County's Public Information Office (PIO).

- **Letters:** Letters will be sent via email or U.S. Mail at least 21 days prior to the public meeting to the stakeholders listed above, as well as to the following groups:



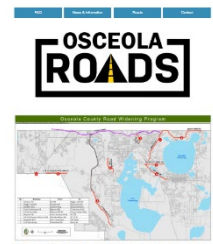
- ◆ Those whose property lies, in whole or part, within at least 300 feet on either side of the centerline of each project alternative

(Section 339.155, F.S.), as well as other local citizens who may be impacted by the construction of this project. This portion of the mailing list will be based on the County Property Appraiser's tax rolls.

- ◆ All of the stakeholders listed above, including neighborhood homeowner associations, businesses, schools, churches, medical facilities and others.
- ◆ Local elected and appointed public officials or individuals who request to be placed on the mailing list for this project which are above and beyond the public officials previously identified.
- ◆ Public and private groups, organizations, agencies, or businesses that request to be placed on the mailing list for this project which are above and beyond those previously identified.

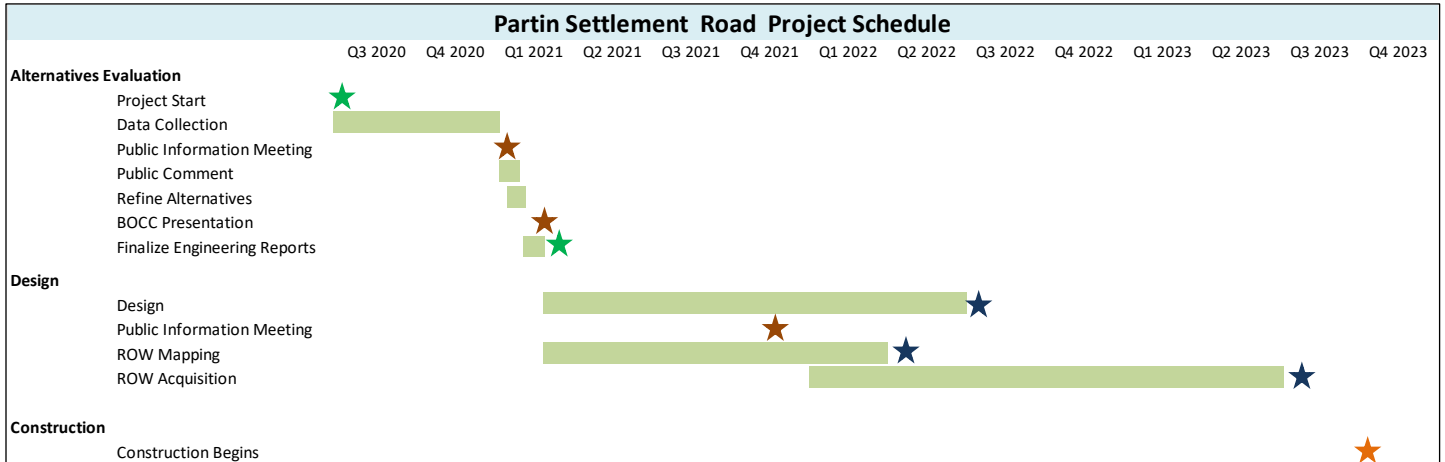
Outreach strategies:

- **Presentations to Local Officials:** Presentations will be given to local officials and agencies such as the Osceola County Board of Commissioners and MetroPlan Orlando prior to the Public Information Meeting to apprise local officials of the project status, specific location, and design concepts, and to receive their comments as requested by the County.
- **Public Information Meetings:** One public information meeting will be conducted during the Alternatives Evaluation to present the project and the conceptual project alternatives being considered, and to obtain comments from the general public. The public information meeting may be in the format of an in-person meeting, a virtual meeting, or both. The meeting will provide an opportunity for attendees to view a looping PowerPoint presentation, project displays and to speak with project team members. Plans for the meeting will include a virtual component providing, at a minimum, that all meeting materials can be viewed on demand through the project website. The information presented will be the same.
- **Informal Meetings:** In addition to the scheduled public meetings, there will be at least two additional meetings with the public, elected and appointed officials, public agencies, or civic groups as needed and determined by the County. The purpose of these meetings will be to apprise the attendees of the project status, specific location, and design concepts, and to receive input.
- **Online information:** Information about the project will be posted to the Osceola County Roads website. The project team also will provide digital announcements to Osceola County for posting on the Osceola County website and social media outlets.



- **Statutes:** Information about Title VI compliance will be provided on all public notification documents and will be displayed at the public meeting.
- **Americans with Disabilities Act Compliance:** Notification of the Department’s intent to comply with the Americans with Disabilities Act will be provided in the public advertisements for the public hearing, in invitational letters to property owners/tenants and local officials, in handouts, and by selection of a public hearing site that meets ADA requirements.

Project Schedule



VII. COORDINATION WITH GOVERNMENT PARTNERS

Copies of aerial maps depicting all alignment and design concepts under consideration, along with draft copies of engineering and environmental study documentation, will be furnished to the County for its review and comment.

VIII. PUBLIC HEARING

No public hearing is planned for this project. County staff will present the results of the evaluation to the Board of County Commissioners for selection and approval of the preferred alternative per the direction of the County's Project Manager.

IX. PUBLIC MEETING FOLLOW-UP

The following procedures will occur after the public meeting.

Responses: Responses to correspondence received as a result of the meeting and questions and comments not answered at the public meeting will be made in writing.

Comments & Coordination Report: A Comments and Coordination Report will be produced and submitted at the conclusion of the evaluation. The report will contain documentation regarding public involvement efforts performed throughout Part A. This summary will include comments and responses received from the public, as



well as documentation regarding coordination with local officials and agencies, and public meetings; Board of County Commissioner comments and actions, and proof of publication of ads; sign-in sheets; and public comments.

X. PUBLIC INVOLVEMENT DURING DESIGN

Final Design will occur under Part B of this contract with comments and coordination continuing throughout the design process. Part B strategies will be to continue active engagement of the community and encourage meaningful dialogue to resolve issues early and effectively. Part B will also include an open house public meeting and two agency presentations as deemed necessary by County staff. Individual meetings and ongoing coordination with the neighborhoods are also vital.

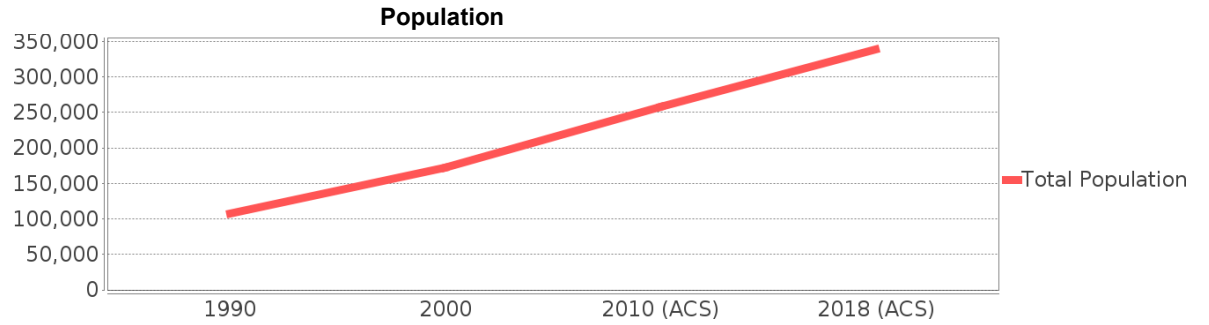
County Demographic Profile

Osceola

Area: NA
 Jurisdiction(s): Cities: NA

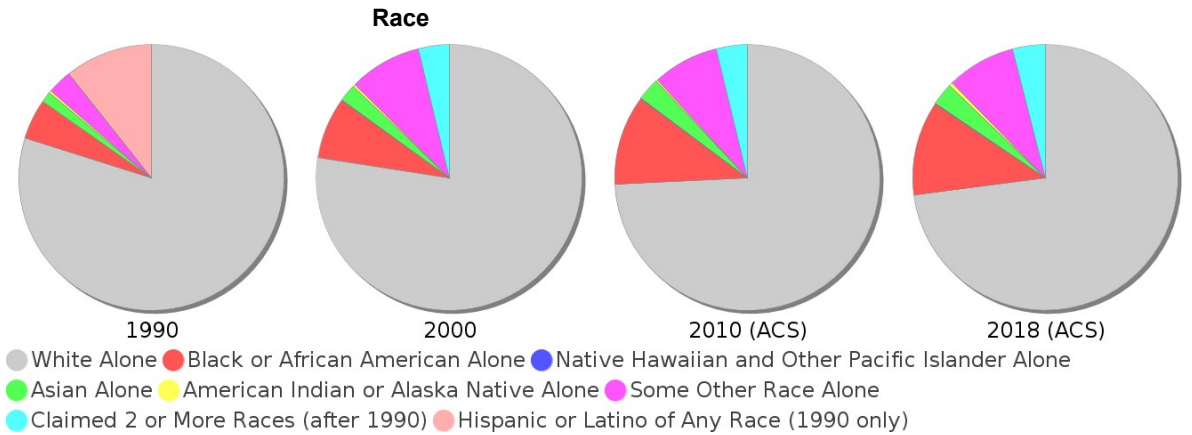
General Population Trends

Description	1990	2000	2010 (ACS)	2018 (ACS)
Total Population	107,728	172,493	258,531	338,619
Total Households	39,150	60,977	92,526	99,158
Average Persons per Acre	0.112	0.179	0.268	0.35
Average Persons per Household	2.752	2.79	3.00	3.40
Average Persons per Family	3.152	3.296	3.233	4.08
Males	52,716	85,185	126,812	166,820
Females	55,012	87,308	131,719	171,799



Race and Ethnicity Trends

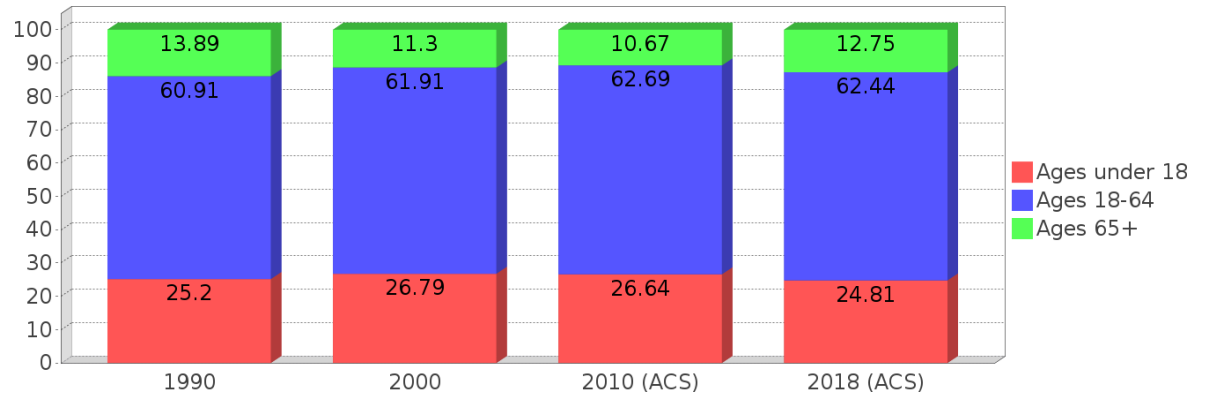
Description	1990	2000	2010 (ACS)	2018 (ACS)
White Alone	96,231 (89.33%)	133,590 (77.45%)	191,793 (74.19%)	246,757 (72.87%)
Black or African American Alone	5,902 (5.48%)	12,873 (7.46%)	28,224 (10.92%)	38,975 (11.51%)
Native Hawaiian and Other Pacific Islander Alone	(NA)	103 (0.06%)	283 (0.11%)	358 (0.11%)
Asian Alone	1,571 (1.46%)	3,642 (2.11%)	7,090 (2.74%)	9,158 (2.70%)
American Indian or Alaska Native Alone	360 (0.33%)	493 (0.29%)	594 (0.23%)	1,526 (0.45%)
Some Other Race Alone	3,598 (3.34%)	15,286 (8.86%)	20,727 (8.02%)	28,338 (8.37%)
Claimed 2 or More Races	(NA)	6,506 (3.77%)	9,820 (3.80%)	13,507 (3.99%)
Hispanic or Latino of Any Race	12,866 (11.94%)	50,742 (29.42%)	112,439 (43.49%)	179,388 (52.98%)
Not Hispanic or Latino	94,862 (88.06%)	121,751 (70.58%)	146,092 (56.51%)	159,231 (47.02%)
Minority	20,289 (18.83%)	69,306 (40.18%)	160,393 (62.04%)	227,369 (67.15%)



Age Trends

Description	1990	2000	2010 (ACS)	2018 (ACS)
Under Age 5	7.34%	6.65%	6.87%	6.40%
Ages 5-17	17.86%	20.14%	19.77%	18.41%
Ages 18-21	5.74%	4.99%	5.73%	5.16%
Ages 22-29	12.81%	11.16%	10.65%	11.60%
Ages 30-39	16.19%	16.18%	14.33%	14.01%
Ages 40-49	12.71%	14.88%	15.16%	14.34%
Ages 50-64	13.45%	14.70%	16.81%	17.33%
Age 65 and Over	13.89%	11.30%	10.67%	12.75%
-Ages 65-74	8.33%	6.38%	6.33%	7.80%
-Ages 75-84	4.19%	3.75%	3.37%	3.60%
-Age 85 and Over	1.38%	1.17%	0.97%	1.35%
Median Age	NA	35	35	35.8

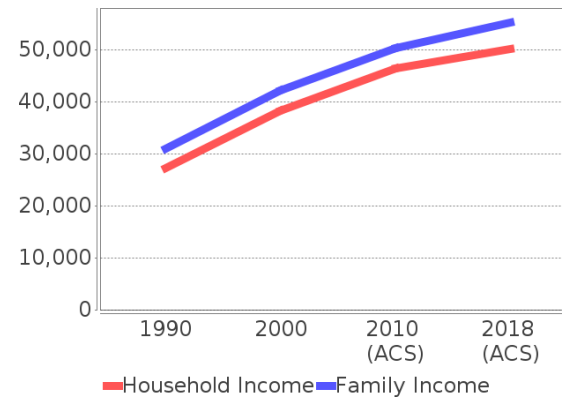
Percentage Population by Age Group



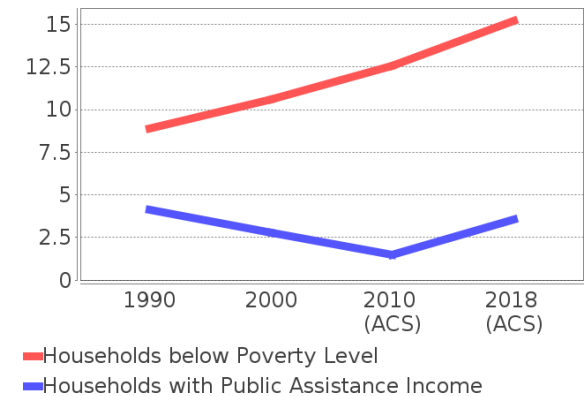
Income Trends

Description	1990	2000	2010 (ACS)	2018 (ACS)
Median Household Income	\$27,260	\$38,214	\$46,328	\$50,063
Median Family Income	\$31,006	\$42,061	\$50,203	\$55,221
Population below Poverty Level	9.39%	11.52%	13.25%	16.29%
Households below Poverty Level	8.91%	10.59%	12.57%	15.20%
Households with Public Assistance Income	4.11%	2.78%	1.47%	3.58%

Income Trends



Poverty and Public Assistance



Disability Trends

See the Data Sources section below for an explanation about the differences in disability data among the various years.

Description	1990	2000	2010 (ACS)	2018 (ACS)
Population 16 To 64 Years with a disability	5,763 (7.01%)	24,744 (15.56%)	NA (NA)	NA (NA)
Population 20 To 64 Years with a disability	NA (NA)	NA (NA)	NA (NA)	25,310 (12.54%)

Educational Attainment Trends

Age 25 and Over

Description	1990	2000	2010 (ACS)	2018 (ACS)
Less than 9th Grade	6,200 (8.83%)	6,810 (6.16%)	10,668 (6.48%)	11,247 (5.05%)
9th to 12th Grade, No Diploma	12,307 (17.52%)	16,285 (14.72%)	15,080 (9.16%)	18,216 (8.19%)
High School Graduate or Higher	51,737 (73.65%)	87,512 (79.12%)	138,898 (84.36%)	193,082 (86.76%)
Bachelor's Degree or Higher	7,873 (11.21%)	17,416 (15.75%)	30,086 (18.27%)	45,730 (20.55%)

Language Trends

Age 5 and Over

Description	1990	2000	2010 (ACS)	2018 (ACS)
Speaks English Well	3,735 (3.74%)	12,514 (7.77%)	22,965 (9.54%)	29,020 (9.16%)
Speaks English Not Well	NA (NA)	7,938 (4.93%)	16,582 (6.89%)	21,138 (6.67%)
Speaks English Not at All	NA (NA)	2,437 (1.51%)	5,376 (2.23%)	9,924 (3.13%)
Speaks English Well or Not at All	2,530 (2.54%)	10,375 (6.44%)	21,958 (9.12%)	31,062 (9.80%)

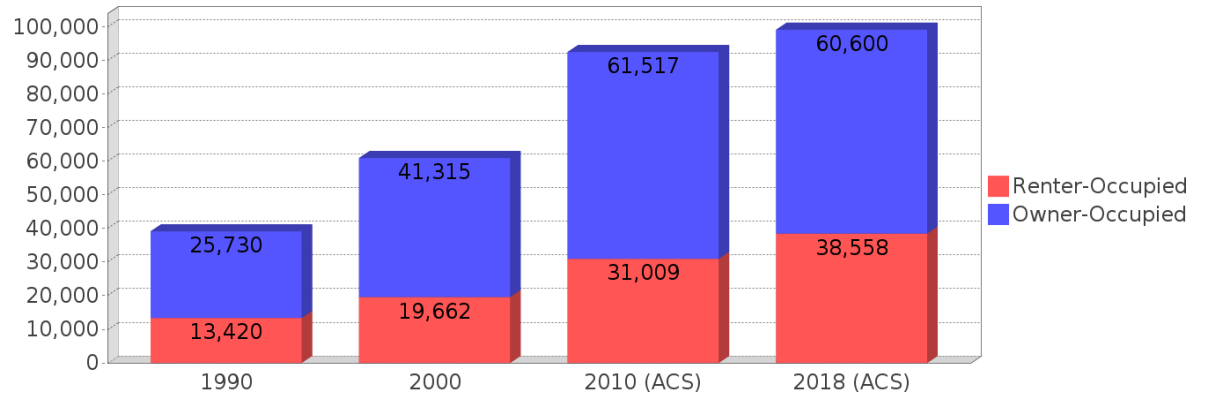
Housing Trends

Description	1990	2000	2010 (ACS)	2018 (ACS)
Total	47,959	72,293	122,823	144,054
Units per Acre	0.05	0.075	0.127	0.15
Single-Family Units	23,390	46,340	79,778	94,601
Multi-Family Units	7,666	14,477	29,807	38,129
Mobile Home Units	7,802	10,989	12,794	11,179
Owner-Occupied Units	25,730	41,315	61,517	60,600
Renter-Occupied Units	13,420	19,662	31,009	38,558
Vacant Units	8,809	11,316	30,297	44,896
Median Housing Value	\$74,700	\$92,500	\$199,200	\$179,800
Occupied Housing Units w/No Vehicle	2,291 (5.85%)	3,492 (5.73%)	4,897 (5.29%)	5,249 (5.29%)

Location Maps

No Map available

Housing Tenure



County Data Sources

Demographic data reported is from the U.S. Decennial Census (1990, 2000) and the American Community Survey (ACS) 5-year estimates from 2006-2010 and 2014-2018. The data was gathered at the county level. Depending on the dataset, the data represents 100% counts (Census Summary File 1) or sample-based information (Census Summary File 3 or ACS).

About the Census Data:

Use caution when comparing the 100% count data (Decennial Census) to the sample-based data (ACS). In any given year, about one in 40 or 2.5% of U.S. households will receive the ACS questionnaire. Over any five-year period, about one in eight households will receive the questionnaire, as compared to about one in six that received the long form questionnaire for the Decennial Census 2000. (Source: <http://mcdc.missouri.edu/pub/data/acs/Readme.shtml>) The U.S. Census Bureau provides help with this process:

<https://www.census.gov/programs-surveys/acs/guidance/comparing-acs-data/2018.html>

Use caution when interpreting changes in Race and Ethnicity over time. Starting with the 2000 Decennial Census, respondents were given a new option of selecting one or more race categories. Also in 2000, the placement of the question about Hispanic origin changed, helping to increase responsiveness to the Hispanic-origin question. Because of these and other changes, the 1990 data on race and ethnicity are not directly comparable with data from later censuses. (Source: <http://www.census.gov/prod/2001pubs/c2kbr01-1.pdf>; <http://www.census.gov/pred/www/rpts/Race%20and%20Ethnicity%20FINAL%20report.pdf>)

The "Minority" calculations are derived from Census and ACS data using both the race and ethnicity responses. On this report, "Minority" refers to individuals who list a race other than White and/or list their ethnicity as Hispanic/Latino. In other words, people who are multi-racial, any single race other than White, or Hispanic/Latino of any race are considered minorities. Disability data is not included in the 2010 Decennial Census, or the 2006-2010 ACS. This data is available in the 2014- 2018 ACS.

Because of changes made to the Census and ACS questions between 1990 and 2018, disability variables should not be compared from year to year. For example: 1) With the 1990 data the disabilities are listed as a "work disability" while this distinction is not made with 2000 or 2018 ACS data; 2) The 2018 ACS data includes the institutionalized population (e.g. persons in prisons and group homes), while this population is not included in 1990 or 2000; 3) the age groupings changed over the years.

Please take the following two concerns into account when viewing this data: 1) With the 1990 data the disabilities are listed as a "work disability" while this distinction is not made with 2000 or 2018 ACS data; 2) The 2018 ACS data includes the institutionalized population (e.g. persons in prisons and group homes), while this population is not included in 1990 or 2000.

source:

<https://www.census.gov/people/disability/methodology/acs.html>

<https://www.census.gov/population/www/cen2000/90vs00/index.html>

The category Bachelor's Degree or Higher under the heading Educational Attainment Trends is a subset of the category High School Graduate or Higher.

Metadata

- Community and Fraternal Centers https://etdmpub.florida-etah.org/meta/gc_communitycenter.xml
- Correctional Facilities in Florida https://etdmpub.florida-etah.org/meta/gc_correctional.xml
- Cultural Centers in Florida https://etdmpub.florida-etah.org/meta/gc_culturecenter.xml
- Fire Department and Rescue Station Facilities in Florida https://etdmpub.florida-etah.org/meta/gc_firestat.xml
- Local, State, and Federal Government Buildings in Florida https://etdmpub.florida-etah.org/meta/gc_govbuild.xml
- Florida Health Care Facilities https://etdmpub.florida-etah.org/meta/gc_health.xml
- Hospital Facilities in Florida https://etdmpub.florida-etah.org/meta/gc_hospitals.xml
- Law Enforcement Facilities in Florida https://etdmpub.florida-etah.org/meta/gc_lawenforce.xml
- Florida Parks and Recreational Facilities https://etdmpub.florida-etah.org/meta/gc_parks.xml
- Religious Centers https://etdmpub.florida-etah.org/meta/gc_religion.xml
- Florida Public and Private Schools https://etdmpub.florida-etah.org/meta/gc_schools.xml
- Social Service Centers https://etdmpub.florida-etah.org/meta/gc_socialservice.xml
- Assisted Rental Housing Units in Florida https://etdmpub.florida-etah.org/meta/gc_assisted_housing.xml
- Group Care Facilities <https://etdmpub.florida-etah.org/meta/groupcare.xml>
- Mobile Home Parks in Florida https://etdmpub.florida-etah.org/meta/gc_mobilehomes.xml
- Migrant Camps in Florida <https://etdmpub.florida-etah.org/meta/migrant.xml>
- Veteran Organizations and Facilities https://etdmpub.florida-etah.org/meta/gc_veterans.xml
- Generalized Land Use - Florida DOT District 5 https://etdmpub.florida-etah.org/meta/d5_lu_gen.xml
- Census Block Groups in Florida https://etdmpub.florida-etah.org/meta/e2_cenacs_cci.xml
- 1990 Census Block Groups in Florida https://etdmpub.florida-etah.org/meta/e2_cenblkgrp_1990_cci.xml
- 2000 Census Block Groups in Florida https://etdmpub.florida-etah.org/meta/e2_cenblkgrp_2000_cci.xml
- 2010 Census Block Groups in Florida https://etdmpub.florida-etah.org/meta/e2_cenblkgrp_2010_cci.xml