



Boggy Creek Road Widening

Simpson Road (C.R. 530)
to Narcoossee Road

Public Information Meeting
December 2, 2021

Presentation Contents



- Project overview, purpose and need
- Current traffic and future demands
- Previous public involvement activities
- Proposed improvements
- Project schedule
- How you can be involved

Title VI



This public meeting is being conducted without regard to race, color, national origin, age, sex, religion, disability or family status. Persons wishing to express their concerns relative to compliance with Title VI may do so by contacting:

Hind Huda

Osceola County Civil Rights Program Coordinator

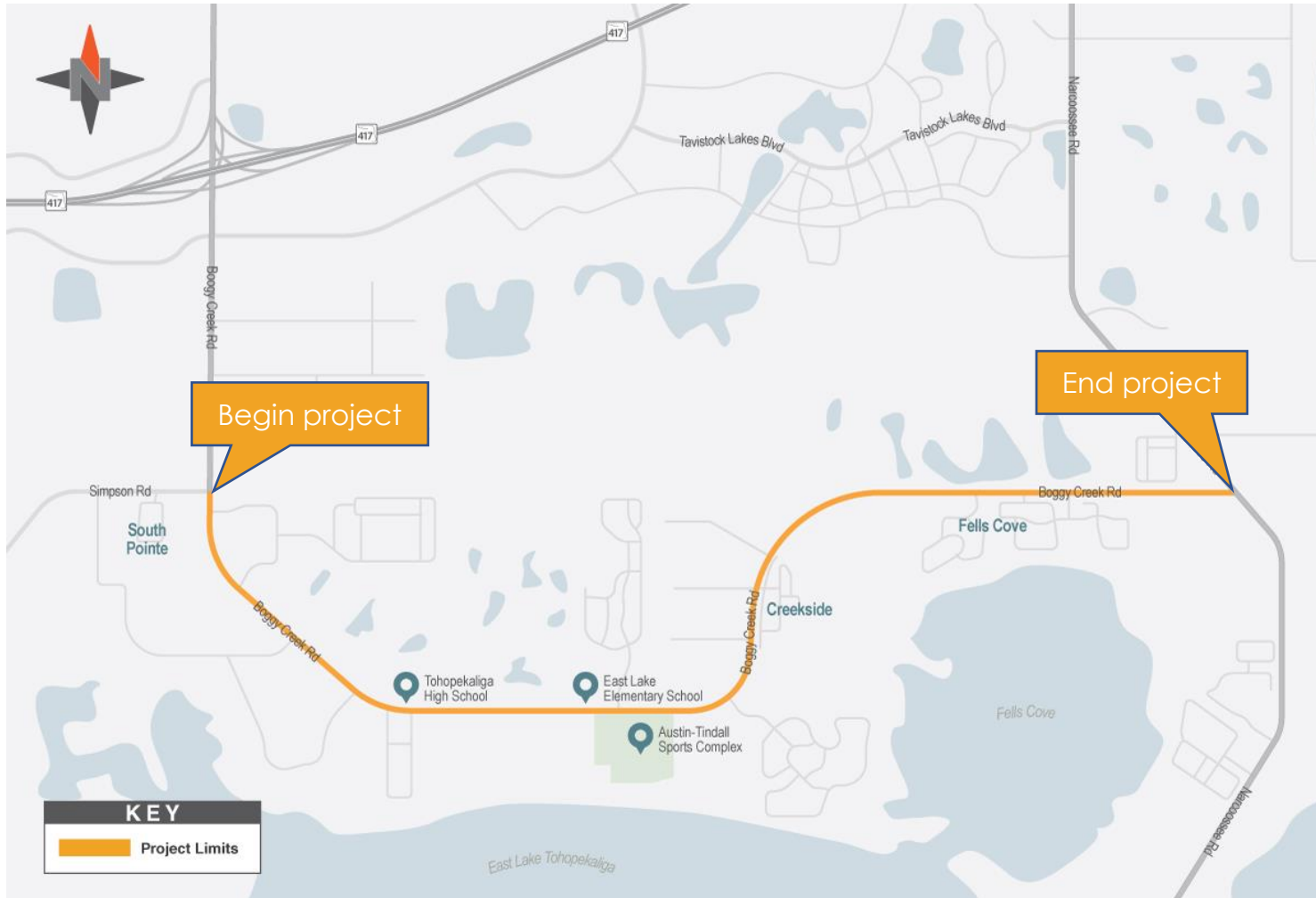
1 Courthouse Square, Suite 4200

Kissimmee, FL 34741

Phone: 407-742-1200 or TTD: 800-955-8771

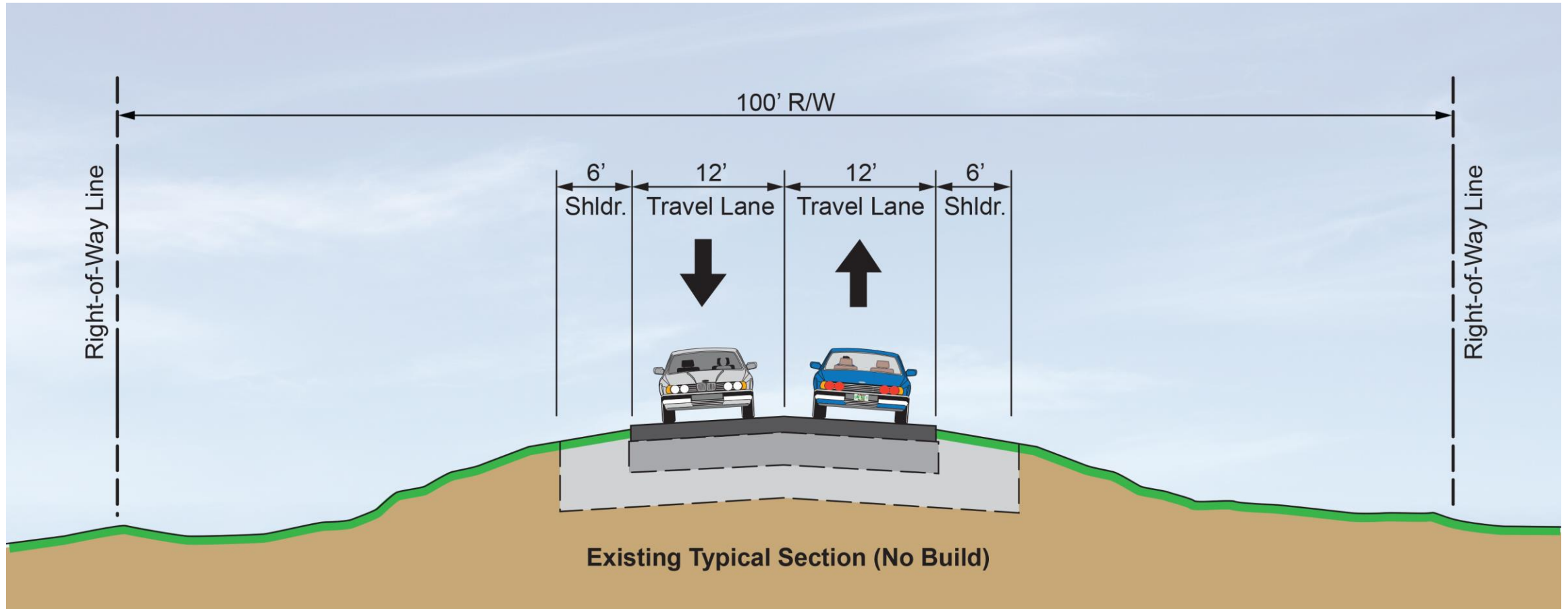
Email: hind.huda@osceola.org

Project Overview



- Location:
 - 5.9 miles from Simpson Road to Narcoossee Road
- Purpose:
 - Address congestion
 - Improve traffic flow
 - Enhance safety

Existing Typical Section



Existing Conditions

- Turn lanes at some locations
- Intermittent sidewalks
- No bicycle lanes
- Open drainage ditches

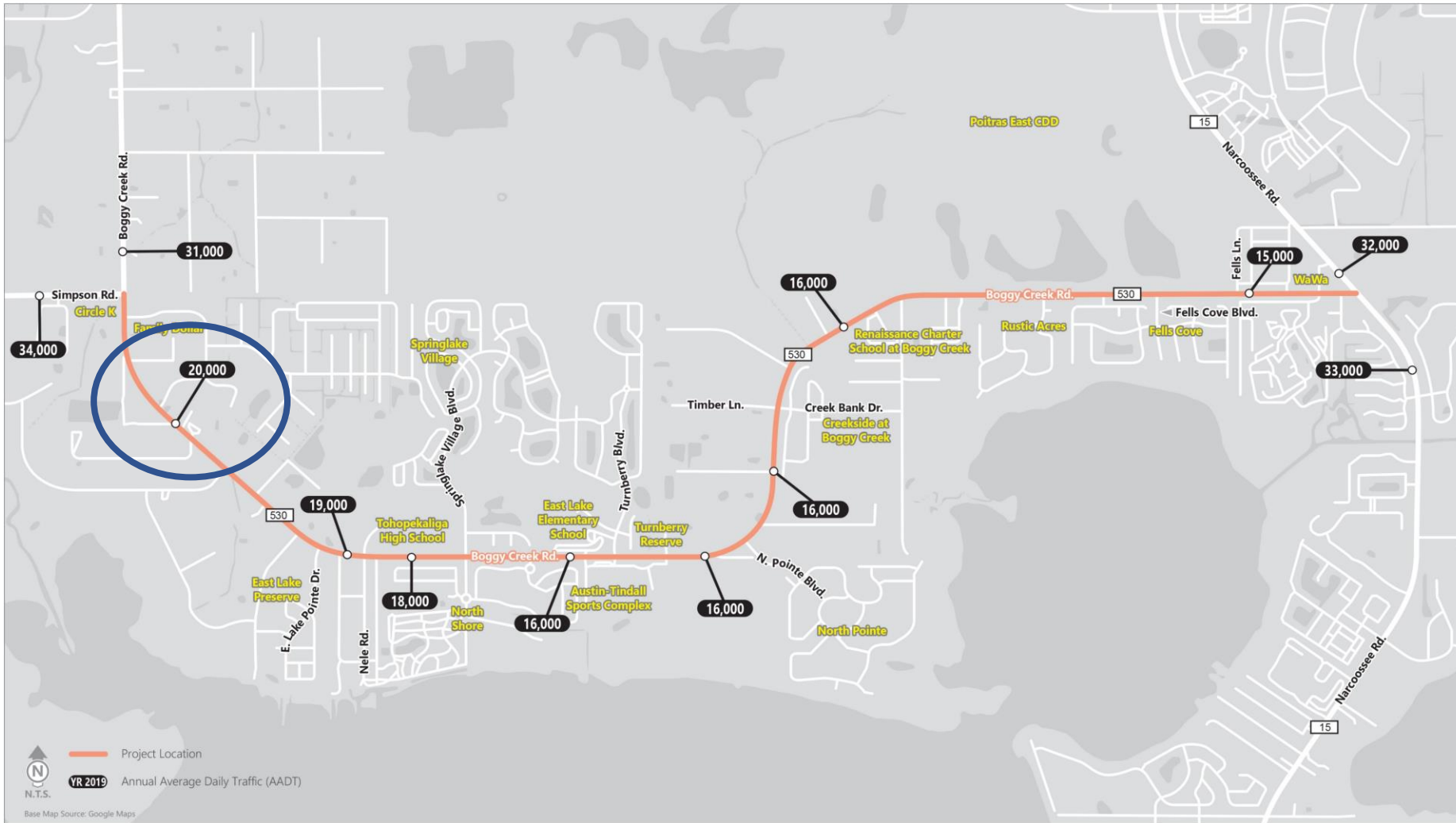


Project History



- Boggy Creek Road identified as a priority by Osceola County
- Alternatives evaluation began in spring 2020 and included:
 - Environmental analysis
 - Sociocultural effects analysis
 - Current & projected traffic analysis

Current Traffic Volumes



Average traffic volumes range from 15,000 to 20,000 vehicles per day

Future Traffic Projections



- By 2045, traffic volumes range from 36,500 and 41,500 vehicles per day
- Current and planned development included in analysis

Crash History



- 509 crashes (2015-2019)
- 5 fatalities
- 360 collisions at intersections
- 43% resulted in injury
- 41% rear-end crashes
- 26% involved left-turn movements



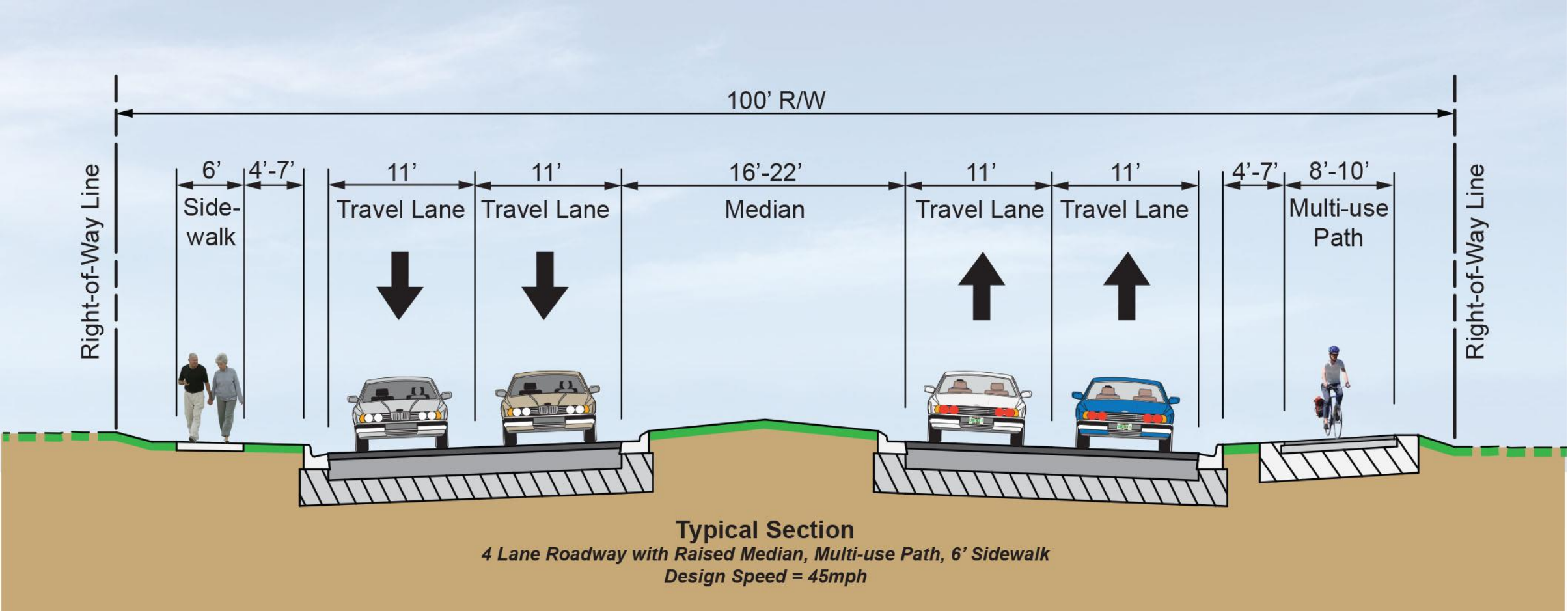
Public Involvement



- Public meeting held March 4, 2021
 - 74 people attended virtually
 - 20 people attended in person
 - 104 comments/questions
- Considering all public comments, the project team refined the alternatives and developed a preferred option
- The preferred option was approved by the Osceola County Board of County Commissioners on April 5, 2021



Typical Section

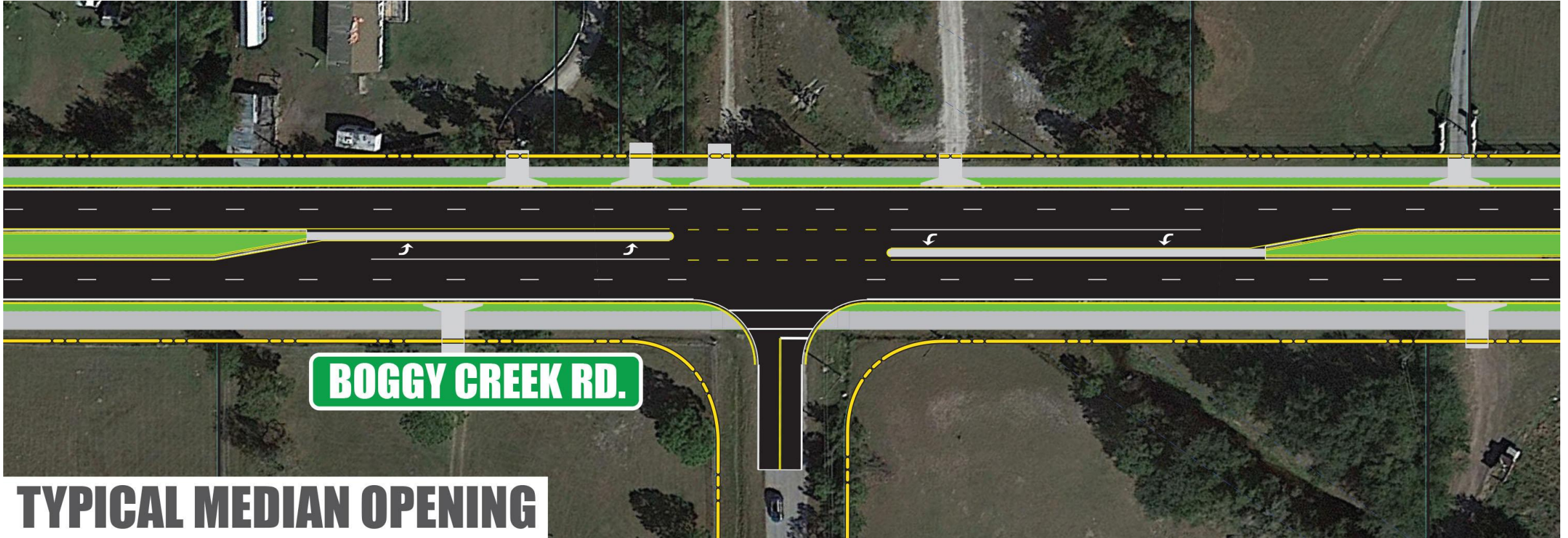


Access Management



- Project Location
- Signalized Intersection
- Median Opening

Median Access



TYPICAL MEDIAN OPENING

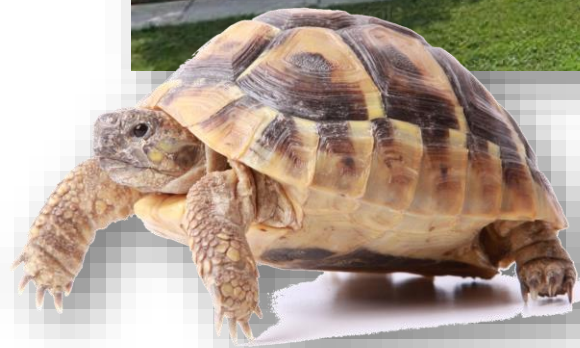
Median Access



Project Commitments



- Roadway Lighting
- Vegetation buffer
- Maintain existing subdivision screen walls
- Protection of endangered and protected species



Construction Impacts

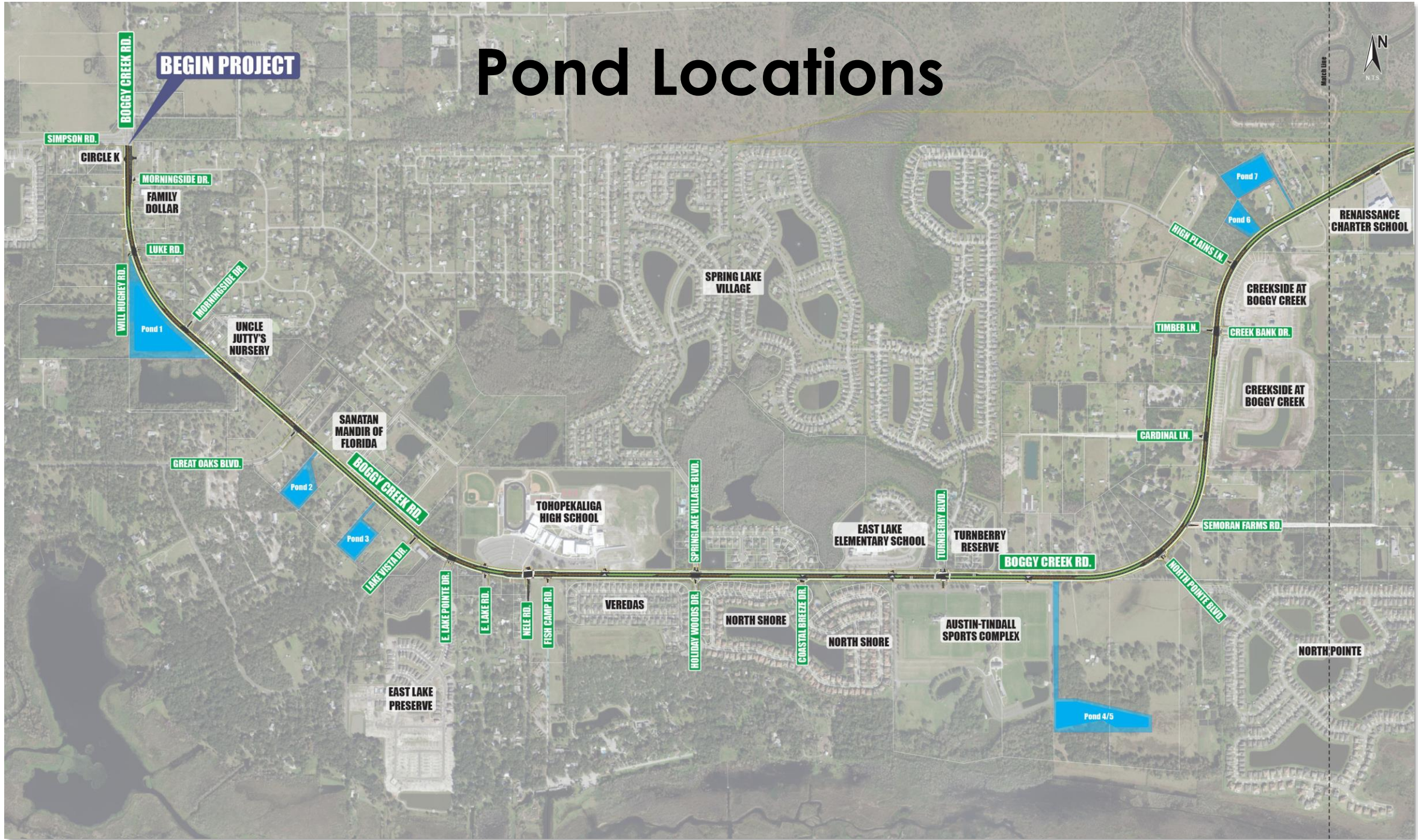


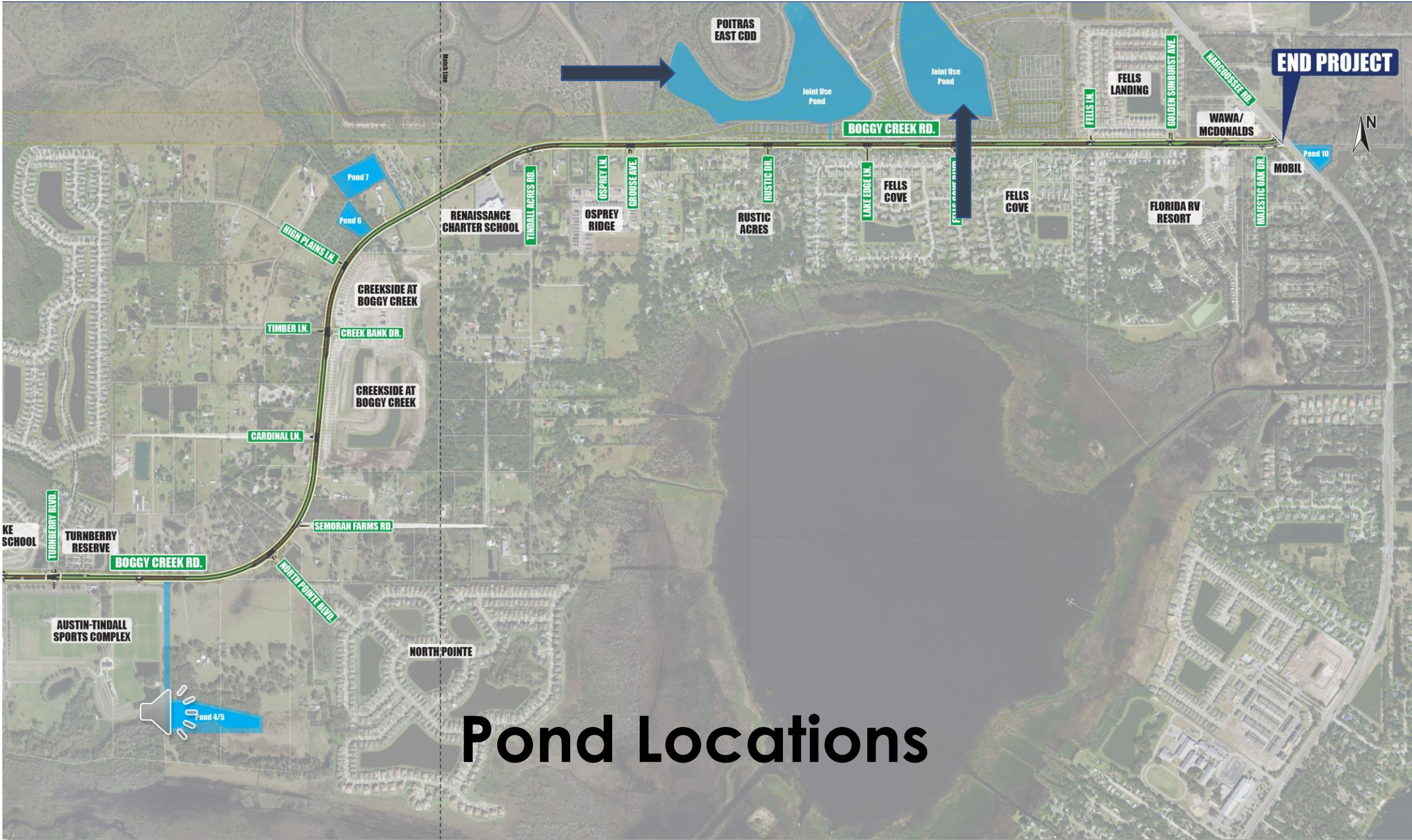
- Boggy Creek Road will remain open during construction
- Limit lane closures to off-peak hours
- Access maintained at all times to homes and businesses
- Contractors will be required to limit dust and control erosion during construction
- Daytime and nighttime work can be expected

Pond Locations



BEGIN PROJECT





Pond Locations

Right-of-Way Process



For More Information, Contact:

Sally Myers

Right-of-Way and Asset Manager

Osceola County

407-742-0502

Sally.Myers@osceola.org

- Some right-of-way acquisition is needed for this project
- Osceola County will contact the affected property owners directly to begin discussions

Project Schedule



Final Design

- Completion in summer 2022

Right-of-Way

- Acquisition anticipated to begin early 2022

Construction

- Expected to begin summer 2023

We Want to Hear From You




Dewberry



In-person attendees

- Speak with project team members
- Complete a comment form and drop it in the comments box
- Take a comment form with you and send it back to the address shown on the form
- Make a comment on the project website at www.Osceola.org/go/boggycreek
- Call or email the project team directly after the meeting by phone at 407-742-0533 or email at Daniel.Kelly@osceola.org
- Please submit comments by December 13, 2021

 **Bogy Creek Road Improvements**
Public Information Meeting
Thursday, December 2, 2021
Project Number: PS-20-11479-DG

PUBLIC COMMENT FORM

Name: _____ Phone: _____
Address: _____
City: _____ State: _____ Zip: _____
Email: _____

Please use this comment form to express your opinions regarding the proposed alternatives to address capacity and safety needs on Bogy Creek Road. You may also email Osceola County Project Manager Daniel Kelly directly at Daniel.Kelly@osceola.org. Comments are always welcome. However, comments received by December 13, 2021, will become part of the record for this meeting.

COMMENTS:

Please send comments or questions via email or U.S. Mail to: **Mr. Daniel Kelly**
Osceola County Project Manager
1 Courthouse Square, Suite 3100
Kissimmee, FL 34741
Daniel.Kelly@osceola.org

Thank You for Attending



For More Information:

Daniel Kelly

Osceola County Project Manager

Transportation & Transit Dept.

1 Courthouse Square, Suite 3100

Kissimmee, FL 34741

Daniel.Kelly@osceola.org

407-742-0533

www.Osceola.org/go/boggycreek