

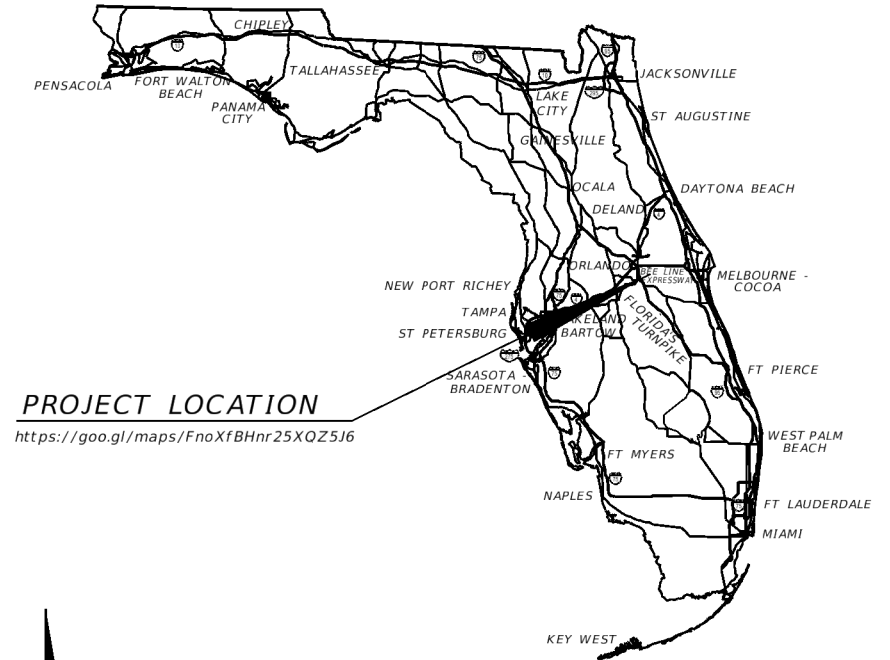


OSCEOLA COUNTY, FLORIDA  
PUBLIC WORKS DEPARTMENT

CONSTRUCTION PLANS

CYRILS DRIVE AND ZUNI ROAD

SIGNALIZATION PLANS



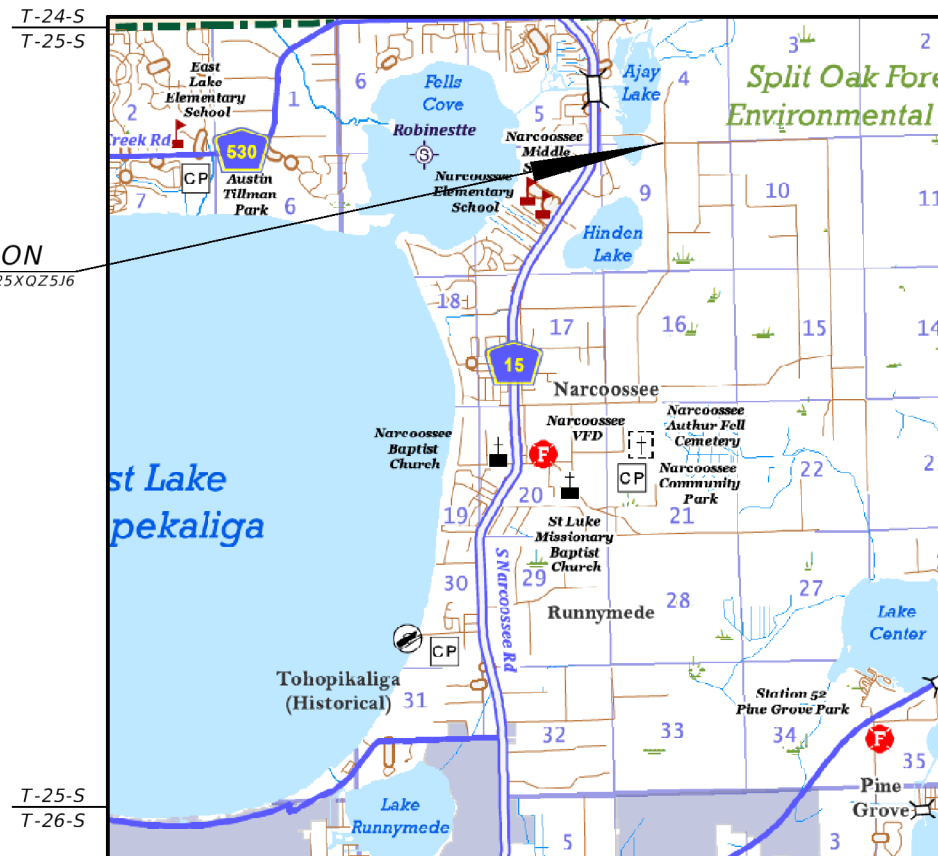
PROJECT LOCATION

<https://goo.gl/maps/FnoXfBHnr25XQZ5J6>

INDEX OF SIGNALIZATION PLANS

| SHEET NO.      | SHEET DESCRIPTION                       |
|----------------|---|
| T-1            | KEY SHEET                               |
| T-2            | SIGNATURE SHEET                         |
| T-3            | TABULATION OF QUANTITIES                |
| T-4 THRU T-5   | GENERAL NOTES                           |
| T-6            | SIGNALIZATION PLAN                      |
| T-7            | CORNER CLIPS                            |
| T-8 THRU T-11  | INTERCONNECT PLAN                       |
| T-12           | MAST ARM TABULATION                     |
| T-13           | STANDARD MAST ARM ASSEMBLIES DATA TABLE |
| T-14           | GUIDE SIGN WORKSHEET                    |
| T-15 THRU T-16 | SPLICE DIAGRAM                          |

PROJECT LOCATION  
<https://goo.gl/maps/FnoXfBHnr25XQZ5J6>



SIGNALIZATION SHOP DRAWINGS  
TO BE SUBMITTED TO:

JEREMY M. CROWE, PE 77064  
TRAFFIC & MOBILITY CONSULTANTS LLC  
3101 MAGUIRE BLVD, SUITE 265  
ORLANDO, FL 32803

PLANS PREPARED BY:



TRAFFIC & MOBILITY CONSULTANTS LLC  
3101 MAGUIRE BLVD, SUITE 265  
ORLANDO, FL 32803  
(407)531-5332  
CERTIFICATE OF AUTHORIZATION NO.: 30024

NOTE: THE SCALE OF THESE PLANS MAY  
HAVE CHANGES DUE TO REPRODUCTION

OSCEOLA COUNTY BOARD OF COUNTY COMMISSIONERS

|            |                                |
|------------|--------------------------------|
| DISTRICT 1 | PEGGY CHOUDHRY                 |
| DISTRICT 2 | VIVIANA JANER - CHAIRWOMAN     |
| DISTRICT 3 | BRANDON ARRINGTON              |
| DISTRICT 4 | CHERYL GRIEB - VICE CHAIRWOMAN |
| DISTRICT 5 | RICKY BOOTH                    |

OSCEOLA COUNTY ENGINEERS

MAHMOUD R NAJDA, COUNTY ENGINEER  
GHASSAN CHOUERY, TRANSPORTATION ENGINEER

GOVERNING STANDARD PLANS:

Florida Department of Transportation, FY 2023/24 Standard Plans for Road and Bridge Construction and applicable Interim Revisions (IRs).

Standard Plans for Road Construction and associated IRs are available at the following website: <http://www.fdot.gov/design/standardplans>

APPLICABLE IRs: IR -N/A-

Standard Plans for Bridge Construction are included in the Structures Plans Component

GOVERNING STANDARD SPECIFICATIONS:

Florida Department of Transportation, FY 2023/24 Standard Specifications for Road and Bridge Construction at the following website: <http://www.fdot.gov/programmanagement/Implemented/SpecBooks>

60% SUBMITTAL  
05/05/2023

PRELIMINARY - NOT FOR CONSTRUCTION

SIGNALIZATION PLANS  
ENGINEER OF RECORD:

JEREMY M. CROWE, PE  
P.E. NO.: 77064

| TMC PROJECT NO. | FISCAL YEAR | SHEET NO. |
|-----------------|-------------|-----------|
| 21190.2         | 24          | T-1       |

*TO BE INCLUDED  
AT 90% SUBMITTAL*

5/5/2023 6:00:49 PM SM P:\21190.2 Cyrilis Dr. & Zuni Rd Sig Des\300 - CADD\21190.211111\Signalization\SIGNS601.dgn

| REVISIONS |             |      |             |
|-----------|-------------|------|-------------|
| DATE      | DESCRIPTION | DATE | DESCRIPTION |
|           |             |      |             |



TRAFFIC & MOBILITY CONSULTANTS LLC  
 3101 MAGUIRE BLVD, SUITE 265  
 ORLANDO, FL 32803  
 OFFICE: (407) 531-5332  
 FAX: (407) 531-5331  
 JEREMY M. CROWE, P.E. 77064  
 CERTIFICATE OF AUTHORIZATION NO.: 30024



*SIGNATURE SHEET*

SHEET NO.

T-2





5. 660-4-XX: ALL VIDEO DETECTORS SHALL MEET OSCEOLA COUNTY'S FUNCTIONALITY REQUIREMENTS. SUNSHIELDS SHALL BE PROVIDED ON EACH CAMERA, A MENU-DRIVEN INTERFACE REQUIRING NO SEPARATE COMPUTER FOR SET-UP OR MAINTENANCE SHALL BE PROVIDED. VIDEO CAMERAS SHALL BE COLOR AND SEALED PRESSURIZED HOUSING. THIS PAY ITEM SHALL ALSO INCLUDE LIGHTNING AND SURGE PROTECTION CONSISTING OF POINT DISCHARGE DISSIPATION TERMINALS ON EACH CAMERA, COAX OR CAT 5 LINE PROTECTORS AND CAMERA PROTECTORS. PROPER GROUNDING MUST BE PROVIDED INCLUDING A BOND WIRE ATTACHED TO THE CAMERA ASSEMBLY RUNNING TO THE POLE GROUND, THIS ITEM INCLUDES EXTERIOR USE CABLING, AND MOUNTING BRACKETS NECESSARY TO MEET THE PERFORMANCE EXPECTATIONS OF THE SYSTEM AS DESCRIBED IN THE SIGNAL GENERAL NOTES. PAYMENT INCLUDES ALL LABOR (MAN-HOURS) AND EQUIPMENT NECESSARY TO DEVELOP AN ACCEPTANCE TESTING PLAN AND TO COMPLETE A SUCCESSFUL VIDEO DETECTION ACCURACY TEST A.K.A. FIELD ACCEPTANCE TEST OF THE VIDEO DETECTION SYSTEM.
6. 663-1-XXX: CONTRACTOR TO FURNISH AND INSTALL GLOBAL TRAFFIC TECHNOLOGIES GPS RECEIVER AND ANTENNA. THE CONTRACTOR WILL PERFORM ALL SIGNAL TESTING, MAPPING AND SYSTEM ACTIVATION. CONTRACTOR TO FURNISH AND INSTALL GLOBAL TRAFFIC TECHNOLOGIES FIRE-RESCUE GPS PRE-EMPTION CONTROLLER INTERFACE MODULE. CONTRACTOR TO FURNISH AND INSTALL GLOBAL TRAFFIC TECHNOLOGIES SYSTEM-SPECIFIC PREEMPTION GPS MULTI-PAIR CABLE TO CONNECT TO GPS ANTENNAS TO GPS PRE-EMPTION CONTROLLER INTERFACE.
7. 665-1-11: ALL PUSH BUTTONS MUST BE LOCATED NEXT TO A 48" X 48" LEVEL LANDING. THE COST OF THE PEDESTRIAN CROSSING SIGN R10-3i SHALL BE INCLUDED IN THE COST OF THE PUSH BUTTON.
8. 670-5-XXX: THE CONTROLLER ASSEMBLY SHALL BE ECONOLITE R77 TS2 TYPE 1 OPERATION, CONSIST OF AN ECONOLITE COBALT 2100 CONTROLLER, AND 3 SHELVES. (SPECIAL NOTE: IF THERE IS LIMITED SIDEWALK A.D.A. CLEARANCE, A REDUCED DEPTH TYPE VI CABINET CAN BE USED WITH PRIOR APPROVAL FROM OSCEOLA COUNTY TRANSPORTATION AND TRANSIT). THE CABINET AIR FILTER SHALL BE OF THE REUSABLE WASHABLE ALUMINUM TYPE. THE TOP OF THE CONTROLLER PAD SHALL BE AT LEAST SIX INCHES ABOVE THE ROADWAY ELEVATION. THIS PAY ITEM SHALL ALSO INCLUDE COMPLETE REINTEGRATION OF THE EXISTING GPS PRIORITY CONTROL PREEMPTION EQUIPMENT, AND RELOCATION TO/FROM THE EXISTING CABINET. A FLUSH MOUNTED AUTOMATIC POWER TRANSFER SWITCH SHALL BE INCLUDED ON THE CABINET. A TECHNICIAN SERVICE PAD 30" IN WIDTH SHALL ALSO BE PROVIDED. WHENEVER POSSIBLE, THE CABINET IS TO BE PLACED SO THAT THE DOOR OPENS AWAY FROM THE INTERSECTION AND OPENS FULLY WITHIN THE RIGHT OF WAY. THIS PAY ITEM INCLUDES THE COST OF THE CONCRETE FOR THE CONTROLLER PAD AND THE SERVICE PAD. NOTE- REFER TO OSCEOLA COUNTY TRAFFIC SIGNAL CABINET AND CONTROLLER SPECIFICATIONS 5/2016. FOR MORE DETAILED SPECIFICATIONS CONTACT AARON TORRES (407) 738-9405, AARON.TORRES@OSCEOLA.ORG OR GHASSAN CHOUERY, PE AT (407) 742-0553, GHASSAN.CHOUERY@OSCEOLA.ORG
9. 685-1-13: THE UPS SYSTEMS SHALL BE ALPHA XM 1100 OR AN EQUIVALENT ALPHA MODEL THAT MEETS OSCEOLA COUNTY'S COMMUNICATION SYSTEM REQUIREMENTS. UPS CABINETS SHALL BE INSTALLED SEPARATELY FROM THE CONTROLLER ASSEMBLY, NO PIGGY BACK MOUNTS.
10. 700-5-XX: ILLUMINATED STREET SIGNS SHALL BE L.E.D. DOUBLE FACED TYPE, PRODUCING A MINIMUM OF 50 LUMENS PER WATT. SIGNS SHALL BE DOUBLE-SIDED AND MOUNTED TO SEPARATE CANTILEVER ARMS BELOW THE MAST ARMS. ALL INTERNALLY ILLUMINATED STREET NAME SIGNS SHALL HAVE ONE COMMON PHOTOCELL INSTALLED IN CABINET. INTERNALLY ILLUMINATED STREET NAME SIGNS SHALL HAVE A 24" VIEWING HEIGHT. THIS VIEWING HEIGHT DOES NOT INCLUDE THE HEIGHT OF THE SIGN ASSEMBLY. INTERNALLY ILLUMINATED STREET NAME SIGNS SHALL BE BURNED IN FOR 60 DAYS BEFORE FINAL ACCEPTANCE. THE SIGNS SHALL USE A BREAKER SEPARATELY FROM THE SIGNAL CABINET AND SHALL BE CONTROLLED BY ONE MASTER PHOTOCELL.

5/5/2023 6:00:57 PM sm  
 P:\21190.2 Cyrilis Dr & Zuni Rd Sig Des\300 - CADD\21190211111\Signalization\GNMT5001.dgn

| REVISIONS |             |      |             |
|-----------|-------------|------|-------------|
| DATE      | DESCRIPTION | DATE | DESCRIPTION |
|           |             |      |             |



TRAFFIC & MOBILITY CONSULTANTS LLC  
 3101 MAGUIRE BLVD, SUITE 265  
 ORLANDO, FL 32803  
 OFFICE: (407) 531-5332  
 FAX: (407) 531-5331  
 JEREMY M. CROWE, P.E. 77064  
 CERTIFICATE OF AUTHORIZATION NO.: 30024

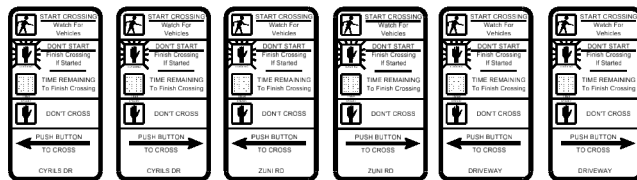
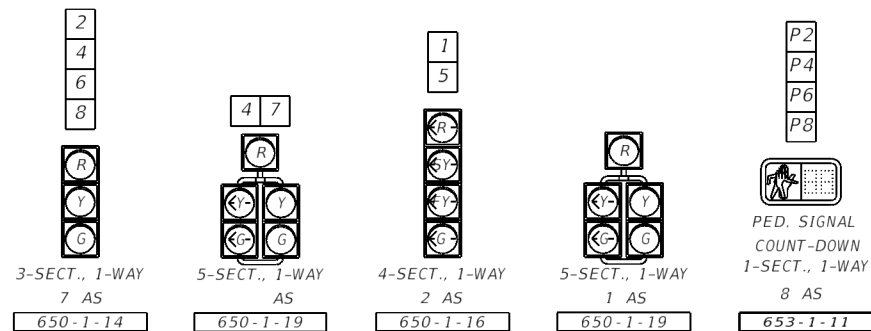


GENERAL NOTES

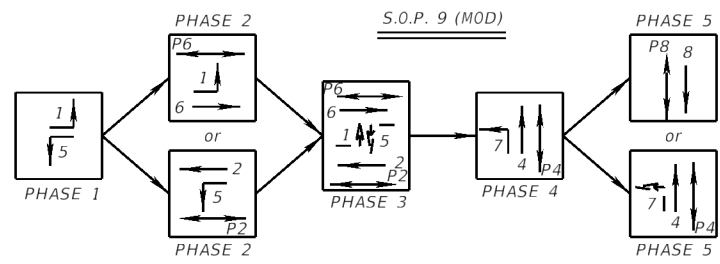
SHEET NO.  
 T-5

NOTICE: THE OFFICIAL RECORD OF THIS SHEET IS THE ELECTRONIC FILE DIGITALLY SIGNED AND SEALED UNDER RULE 61G15-23.004, F.A.C.

TRAFFIC SIGNAL HEAD DETAILS



INTERNALLY ILLUMINATED OVERHEAD SIGNS N.T.S.



VIDEO DETECTION ASSIGNMENTS

| CAMERA DETECTION | DETECTION ZONE | DELAY TIME (SEC) | DETECTION ZONE DIMENSION |
|------------------|----------------|------------------|--------------------------|
| V/R1             | DZ-2/2A        | -                | 6'X200'                  |
|                  | DZ-5           | -                | 6'X40'                   |
| V2               | DZ-4           | -                | 6'X40'                   |
|                  | DZ-7           | -                | 6'X40'                   |
|                  | DZ-1           | -                | 6'X40'                   |
| V/R3             | DZ-6/6A        | -                | 6'X200'                  |
|                  | DZ-6R          | 5                | 6'X40'                   |
|                  | DZ-6 BIKE      | -                | 3'X40'                   |
| V4               | DZ-8           | -                | 6'X40'                   |

SIZE AND PLACEMENT OF VIDEO DETECTION ZONES ARE INITIAL AND MAY REQUIRE FIELDS ADJUSTING AS DIRECTED BY PROJECT ENGINEER

INITIAL CONTROLLER TIMINGS

| PHASE            | NBL | SBT  | WBT | SBL | NBT  | WBL | EBT |
|------------------|-----|------|-----|-----|------|-----|-----|
| MOVEMENT NUMBER  | 1   | 2    | 4   | 5   | 6    | 7   | 8   |
| MINIMUM GREEN    | 7.0 | 10.0 | 7.0 | 7.0 | 10.0 | 7.0 | 7.0 |
| EXTENSION        | 3.0 | 3.0  | 3.0 | 3.0 | 3.0  | 3.0 | 3.0 |
| MAXIMUM GREEN 1  | 70  | 70   | 40  | 70  | 70   | 40  | 40  |
| MAXIMUM GREEN 2  | --  | --   | --  | --  | --   | --  | --  |
| YELLOW CLEARANCE | 4.0 | 4.0  | 3.4 | 4.0 | 4.0  | 3.4 | 3.4 |
| ALL RED          | 2.0 | 2.0  | 2.8 | 2.0 | 2.0  | 2.8 | 2.0 |
| PEDESTRIAN WALK  | --  | 7.0  | 7.0 | --  | 7.0  | --  | 7.0 |
| PED. CLEARANCE   | --  | 9    | 23  | --  | 16   | --  | 26  |
| RECALL           | --  | --   | --  | --  | --   | --  | --  |
| FLASH            | R   | Y    | R   | R   | Y    | R   | R   |

SIGNAL TIMING TO BE ADJUSTED BY OSCEOLA COUNTY BASED ON THE OBSERVED TRAFFIC FLOW WITHIN TWO WEEKS AFTER INSTALLATION

CABINET PAY ITEMS

|                        |
|------------------------|
| 13 RUNS @ 30 LF        |
| 4-2" SIGNAL            |
| 1-2" VEHICLE DETECTION |
| 1-2" PEDESTRIAN        |
| 1-2" PED DETECTOR      |
| 1-2" ITS/COMMUNICATION |
| 1-2" ELECTRIC SERVICE  |
| 4-2" SPARE             |

LEGEND  
 [Symbol] TRAFFIC DATA VVDS (ADVANCE/PRESENCE)  
 [Symbol] CCTV CAMERA

HYBRID (VIDEO + MICROWAVE) DETECTION PAY ITEM

|          |      |
|----------|------|
| 660-3-12 | 2 EA |
|----------|------|

VIDEO DETECTION PAY ITEM

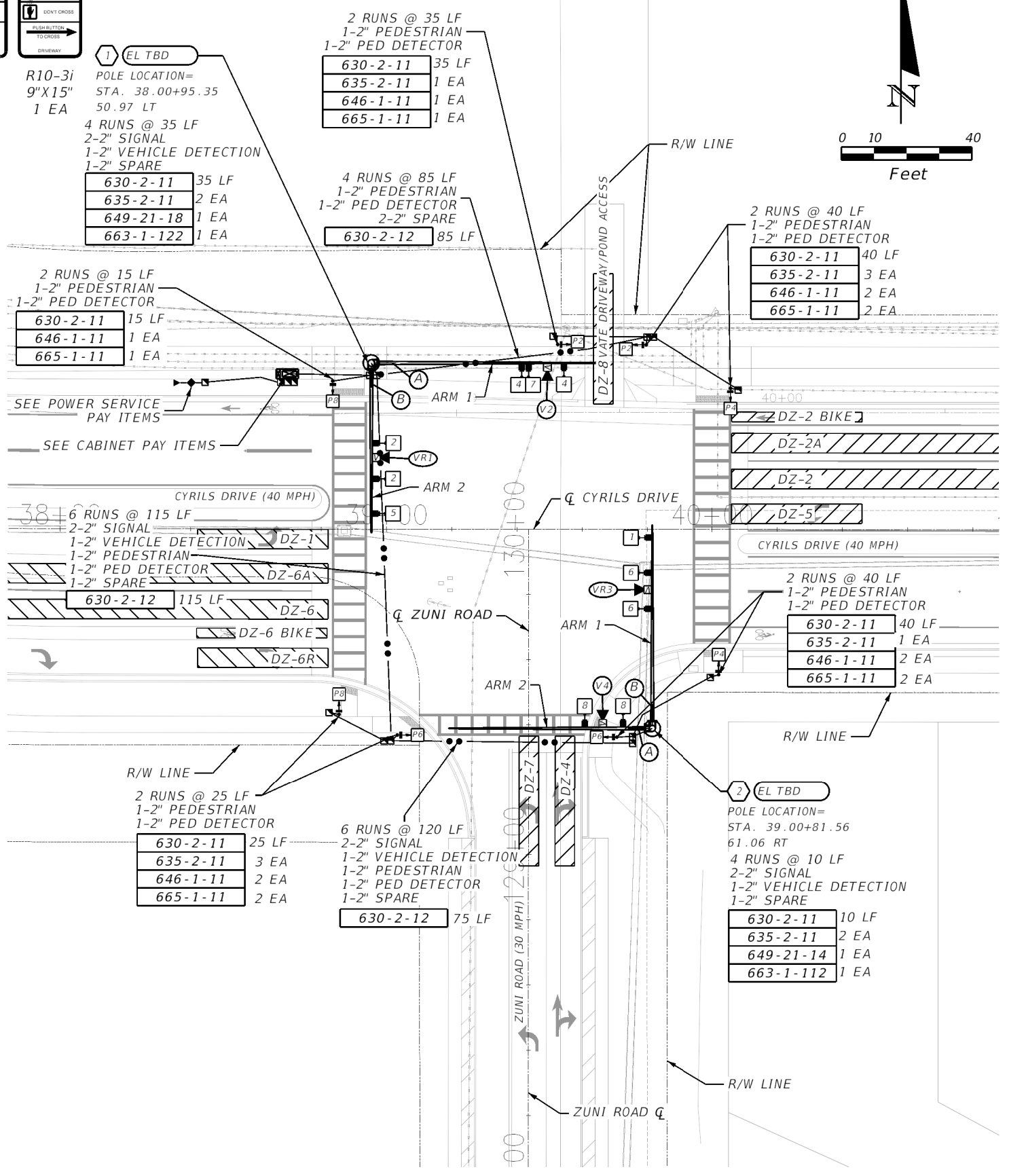
|          |      |
|----------|------|
| 660-4-12 | 2 EA |
|----------|------|

ELECTRIC SERVICE PAY ITEMS

|                       |       |
|-----------------------|-------|
| 2 RUNS @ 50 LF        |       |
| 1-2" ELECTRIC SERVICE |       |
| 1-2" SPARE            |       |
| 630-2-11              | 50 LF |
| 635-2-11              | 1 EA  |
| 639-1-122             | 1 AS  |
| 639-2-1               | 50 LF |
| 639-3-11              | 1 EA  |
| 641-2-12              | 1 EA  |

ELECTRIC SERVICE CONNECTION TO BE FINALIZED WITH ORLANDO UTILITIES COMMISSION PRIOR TO FINAL PLAN

SIGNALIZATION NOTES  
 1. THE MAJOR STREET IS CYRILS DRIVE (SPEED LIMIT 35 MPH), THE MINOR STREET IS ZUNI ROAD (SPEED LIMIT 30 MPH).  
 2. THE MAJOR STREET MOVEMENTS ARE 1,2,5&6, AND THE MINOR STREET MOVEMENT ARE 4,7&8.  
 3. CONTRACTOR SHALL COORDINATE WITH ORLANDO UTILITIES COMMISSION (OUC) FOR CONNECTION TO POWER SERVICE.  
 4. CONTRACTOR TO ENSURE ALL PEDESTRIAN DETECTORS ARE IMMEDIATELY ADJACENT TO A MINIMUM 48" X 48" FLAT LANDING.



5/5/2023 6:02:18 PM sm P:\21190.2 Cyrils Dr & Zuni Rd Sig Des\300 - CADD\2119021111\SIGNALIZATION\PLAN\SIG01.dgn

| REVISIONS |             | REVISIONS |             |
|-----------|-------------|-----------|-------------|
| DATE      | DESCRIPTION | DATE      | DESCRIPTION |
|           |             |           |             |

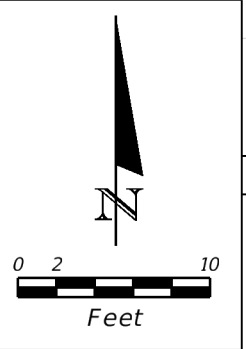
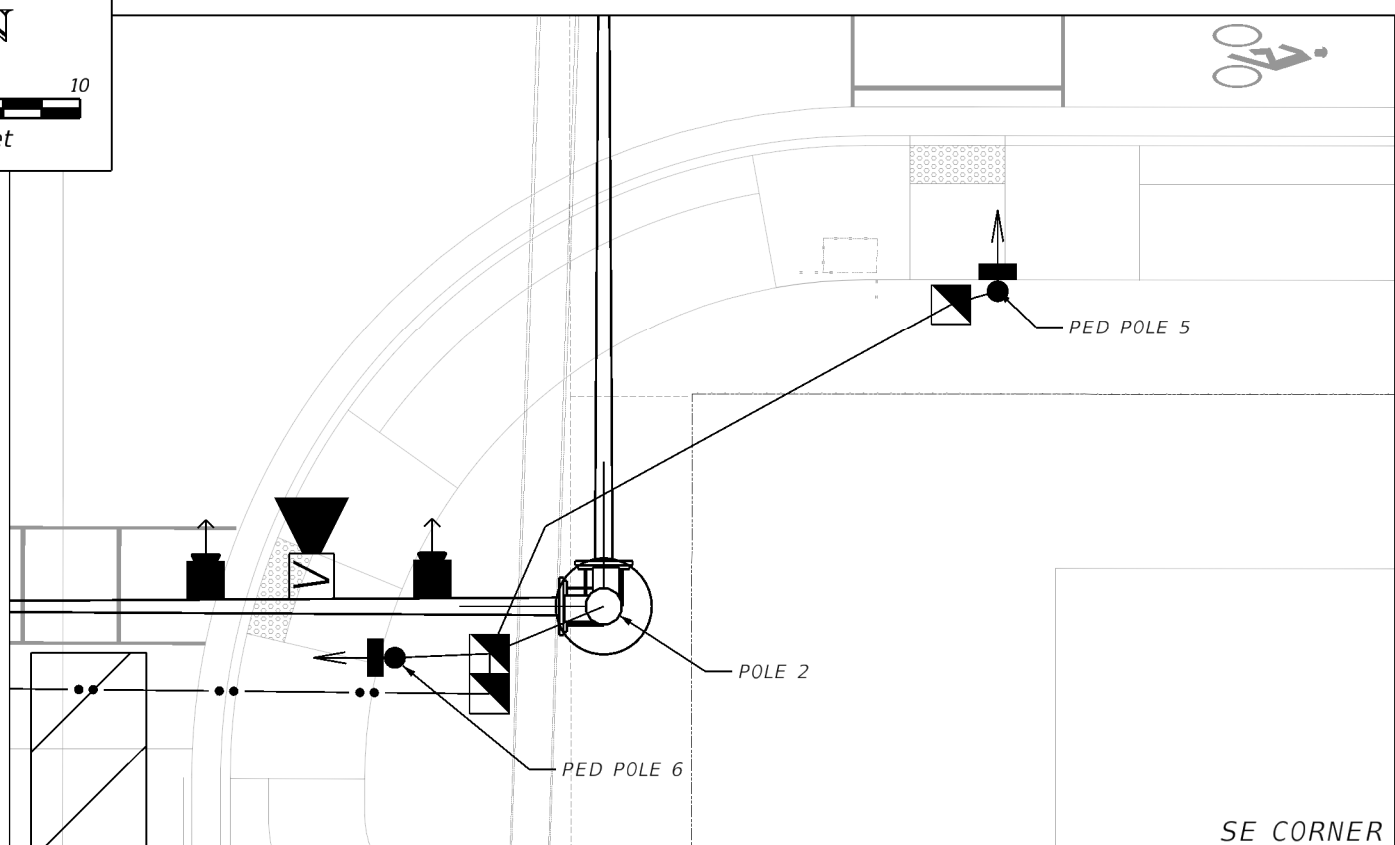
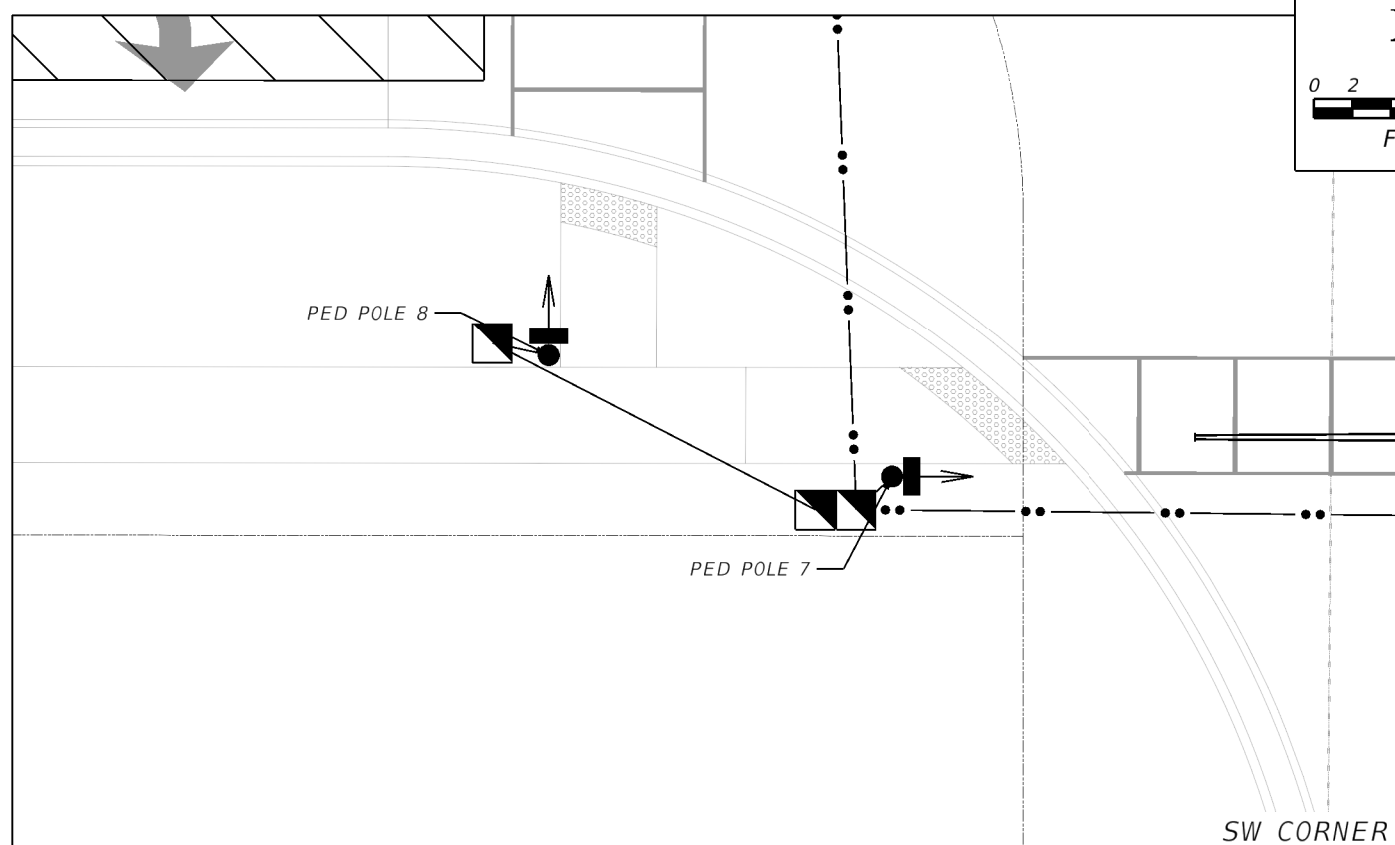
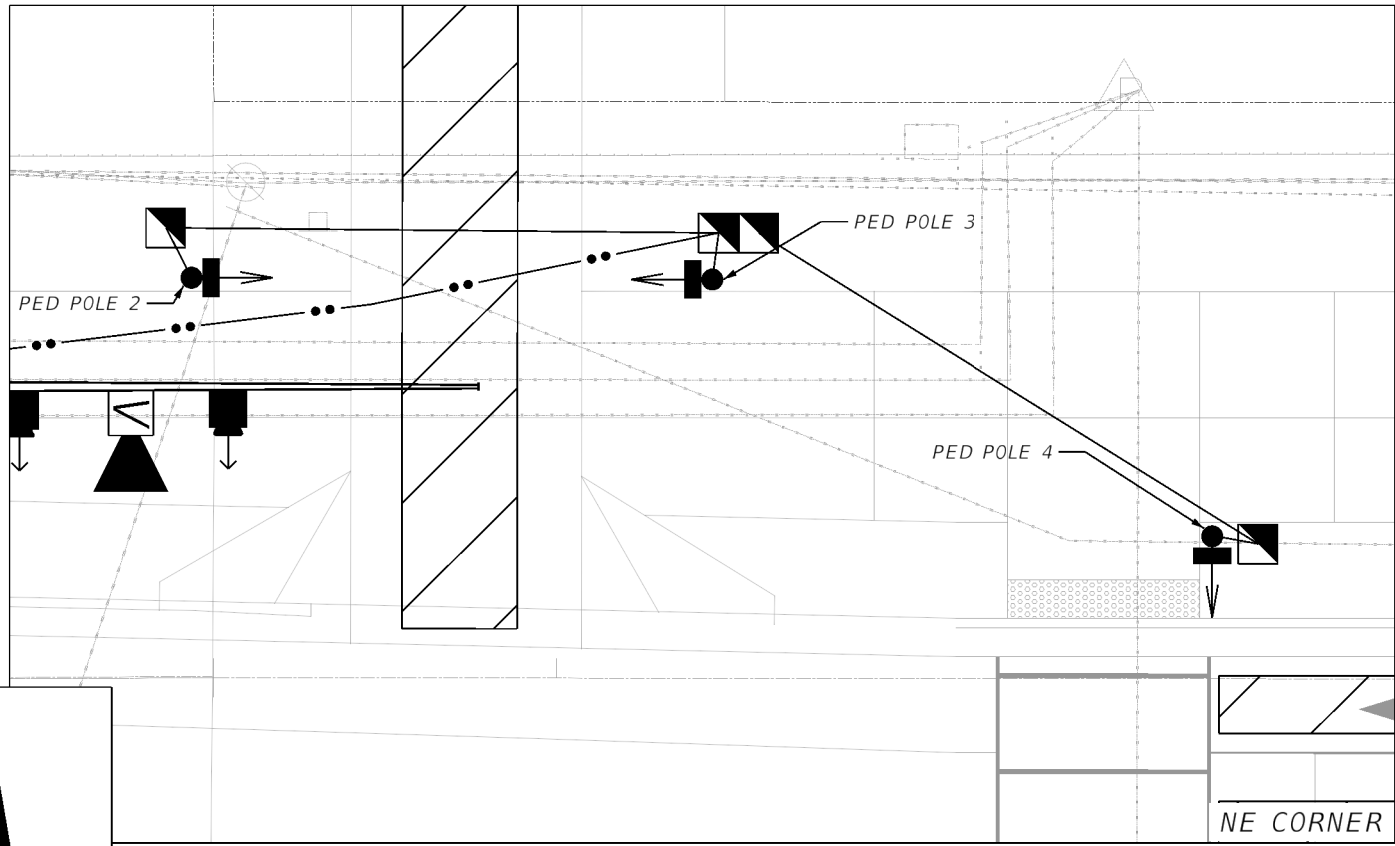
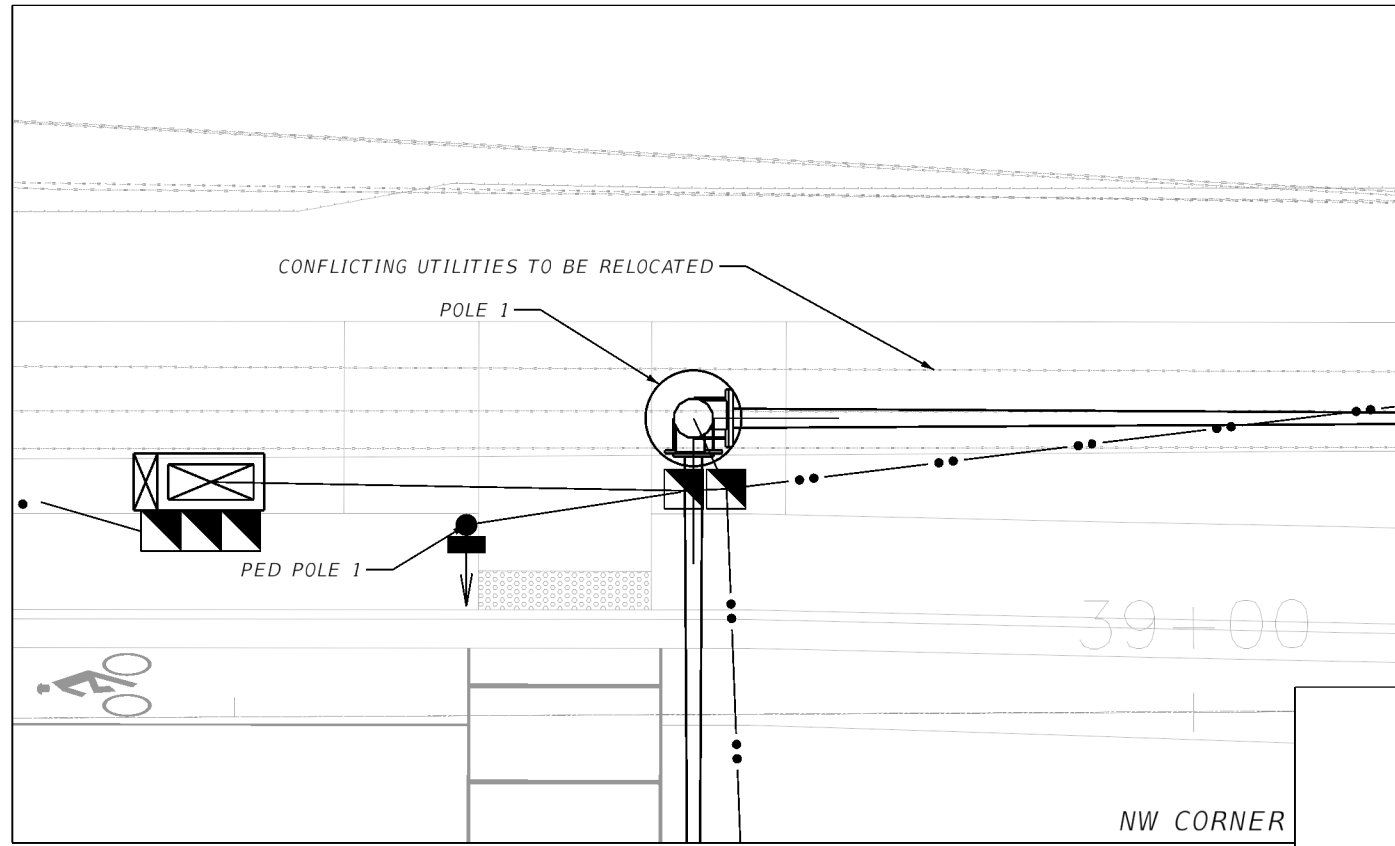
TRAFFIC & MOBILITY CONSULTANTS LLC  
 3101 MAGUIRE BLVD, SUITE 265  
 ORLANDO, FL 32803  
 OFFICE: (407) 531-5332  
 FAX: (407) 531-5331  
 CHARLOTTE N. DAVIDSON, P.E. 50725  
 CERTIFICATE OF AUTHORIZATION: 30024

OSCEOLA COUNTY

**SIGNALIZATION PLAN**

SHEET NO.  
T-6

5/5/2023 6:02:22 PM SM  
 P:\21190.2 Cyrilis Dr & Zuni Rd Sig Des\300 - CADD\21190.211111Signalization\PLANS\CornerClips02.dgn



| REVISIONS |             |      |             |
|-----------|-------------|------|-------------|
| DATE      | DESCRIPTION | DATE | DESCRIPTION |
|           |             |      |             |

**TMC**  
 Traffic & Mobility Consultants

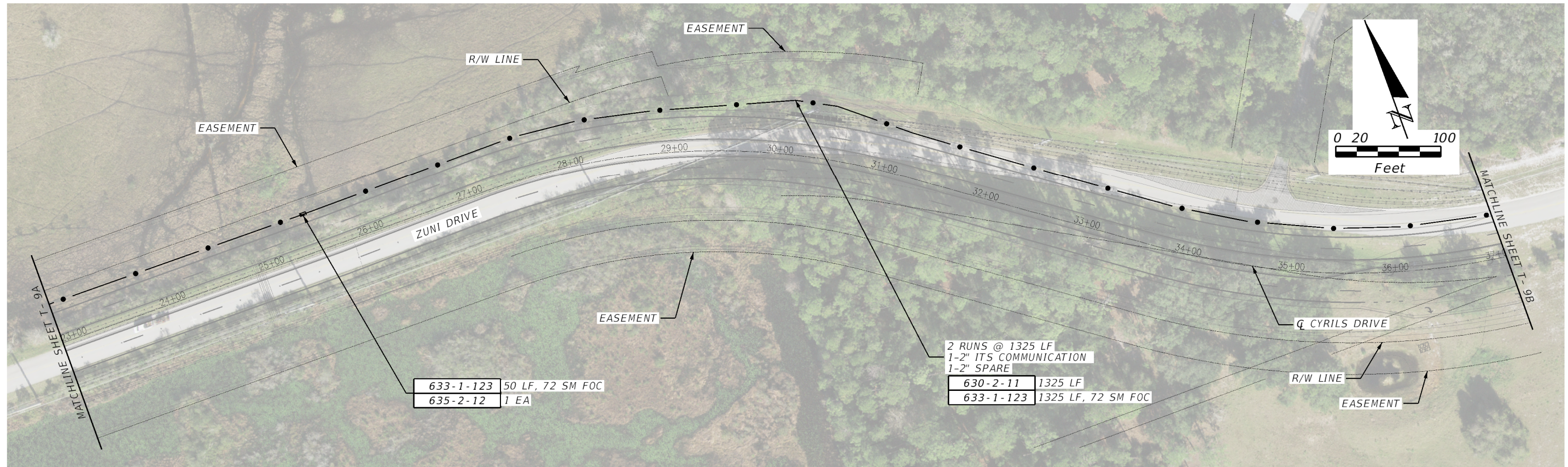
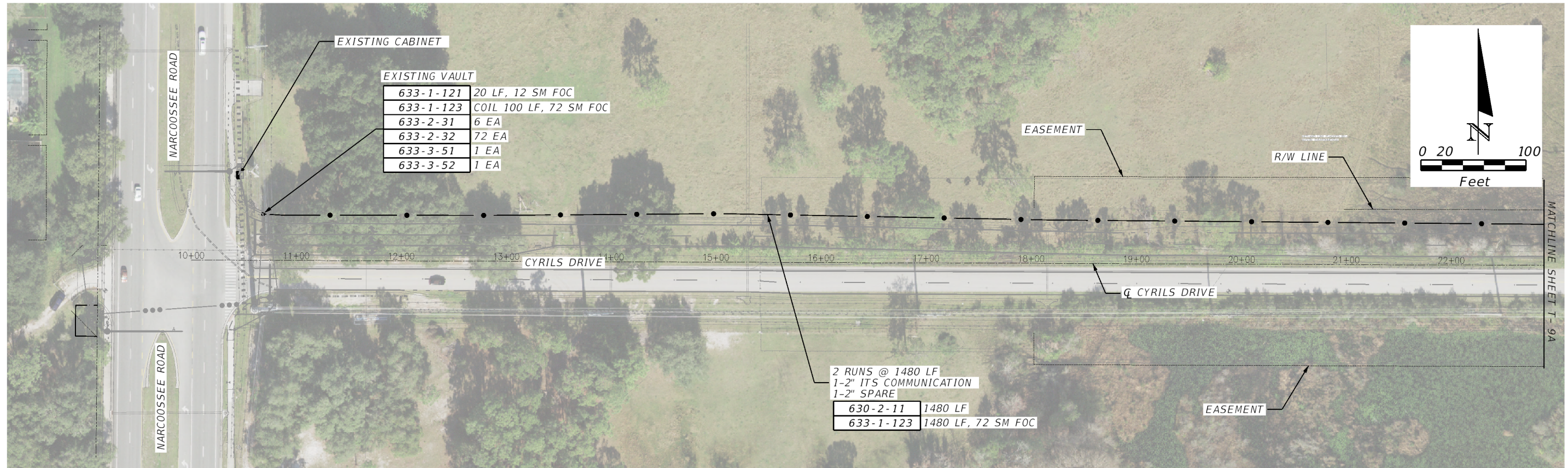
TRAFFIC & MOBILITY CONSULTANTS LLC  
 3101 MAGUIRE BLVD, SUITE 265  
 ORLANDO, FL 32803  
 OFFICE: (407) 531-5332  
 FAX: (407) 531-5331  
 JEREMY M. CROWE, P.E. 77064  
 CERTIFICATE OF AUTHORIZATION NO.: 30024



*CORNER CLIPS*

SHEET NO.  
 T-7

THE OFFICIAL RECORD OF THIS SHEET IS THE ELECTRONIC FILE DIGITALLY SIGNED AND SEALED UNDER RULE 61G15-23.004, F.A.C.



5/5/2023 6:03:01 PM SM P:\21902 Cyrils Dr & Zuni Rd Sig Des\300 - CADD\21902\III\ITS\PLANT01.dgn

| REVISIONS |             |      |             |
|-----------|-------------|------|-------------|
| DATE      | DESCRIPTION | DATE | DESCRIPTION |
|           |             |      |             |

**TMC**  
Traffic & Mobility Consultants

TRAFFIC & MOBILITY CONSULTANTS LLC  
3101 MAGUIRE BLVD, SUITE 265  
ORLANDO, FL 32803  
OFFICE: (407) 531-5332  
FAX: (407) 531-5331  
JEREMY M. CROWE, P.E. 77064  
CERTIFICATE OF AUTHORIZATION NO.: 30024

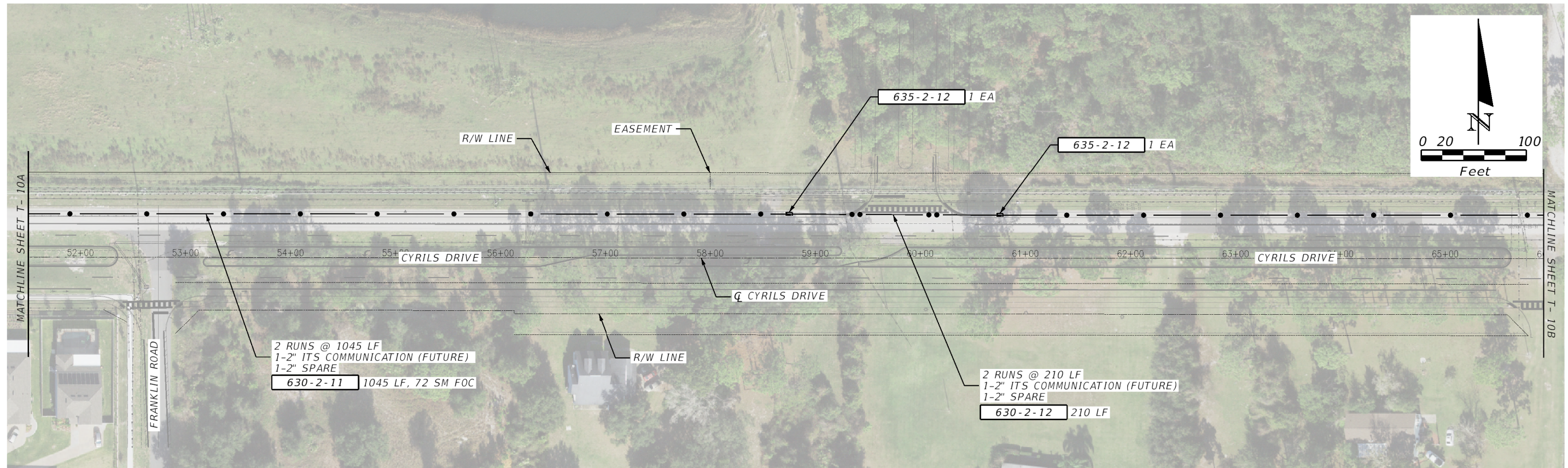
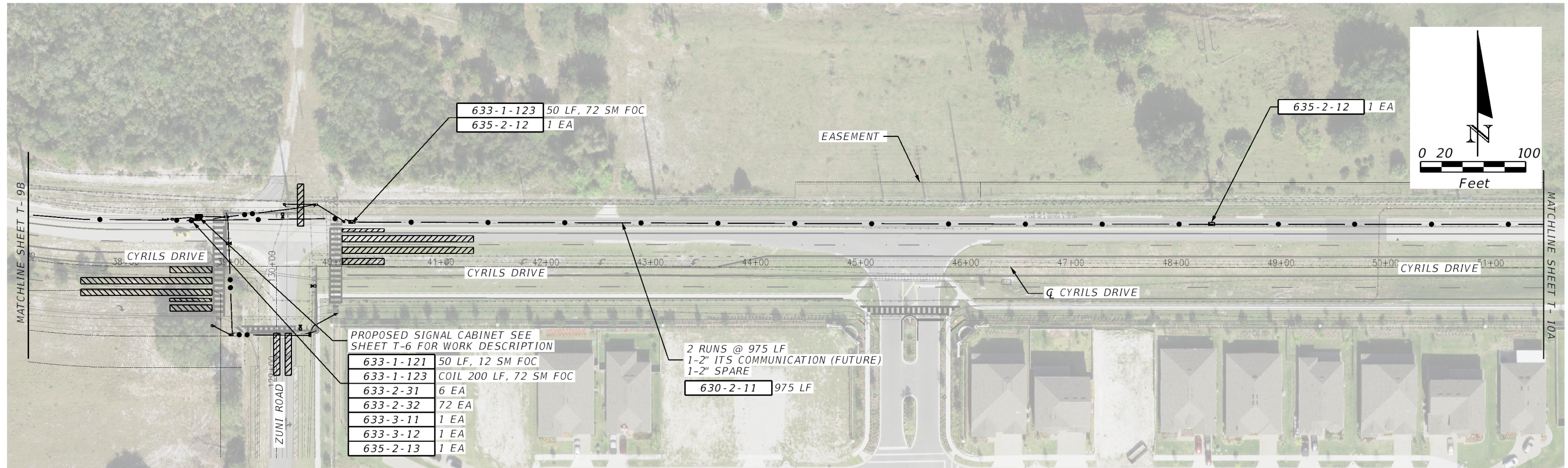
**Osceola County**  
**Florida**  
"Honoring the past shaping the future."

**INTERCONNECT PLAN**

SHEET NO.  
**T-8**


THE OFFICIAL RECORD OF THIS SHEET IS THE ELECTRONIC FILE DIGITALLY SIGNED AND SEALED UNDER RULE 61G15-23.004, F.A.C.





5/5/2023 6:03:22 PM SM  
 P:\21190.2 Cyrils Dr & Zuni Rd Sig Des\300 - CADD\21190.2\1111\ITS\PLAN\T01.dgn

| REVISIONS |             |      |             |
|-----------|-------------|------|-------------|
| DATE      | DESCRIPTION | DATE | DESCRIPTION |
|           |             |      |             |
|           |             |      |             |


**TMC**  
 Traffic & Mobility Consultants

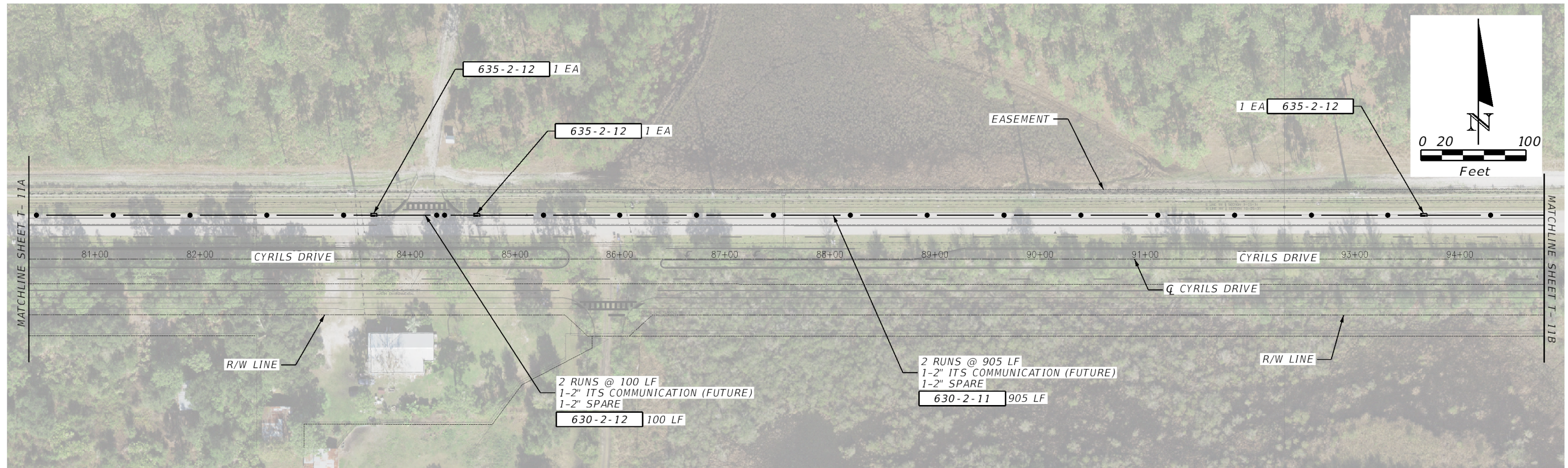
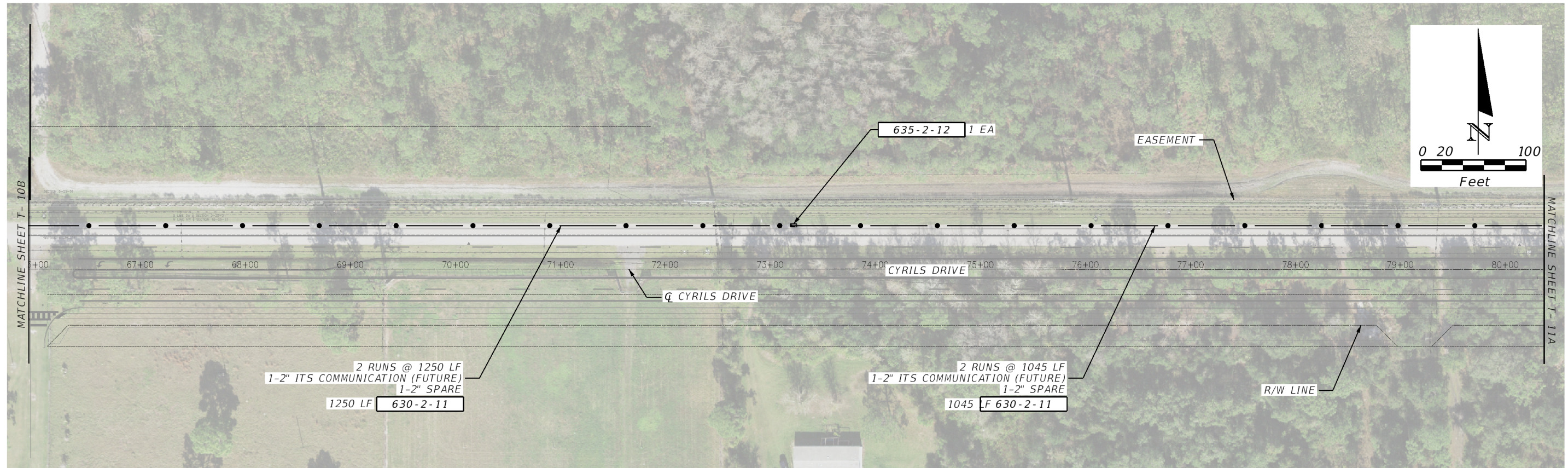
TRAFFIC & MOBILITY CONSULTANTS LLC  
 3101 MAGUIRE BLVD, SUITE 265  
 ORLANDO, FL 32803  
 OFFICE: (407) 531-5332  
 FAX: (407) 531-5331  
 JEREMY M. CROWE, P.E. 77064  
 CERTIFICATE OF AUTHORIZATION NO.: 30024


**Osceola County**  
**Florida**  
*"Honoring the past shaping the future."*

**INTERCONNECT PLAN**

SHEET NO.  
 T-9

THE OFFICIAL RECORD OF THIS SHEET IS THE ELECTRONIC FILE DIGITALLY SIGNED AND SEALED UNDER RULE 61G15-23.004, F.A.C.



5/5/2023 6:03:51 PM SM P:\21902 Cyrils Dr & Zum Rd Sta Des\300 - CADD\21902\1111\ITS\PLAN\T01.dgn

REVISIONS

| DATE | DESCRIPTION | DATE | DESCRIPTION |
|------|-------------|------|-------------|
|      |             |      |             |



TRAFFIC & MOBILITY CONSULTANTS LLC  
 3101 MAGUIRE BLVD, SUITE 265  
 ORLANDO, FL 32803  
 OFFICE: (407) 531-5332  
 FAX: (407) 531-5331  
 JEREMY M. CROWE, P.E. 77064  
 CERTIFICATE OF AUTHORIZATION NO.: 30024



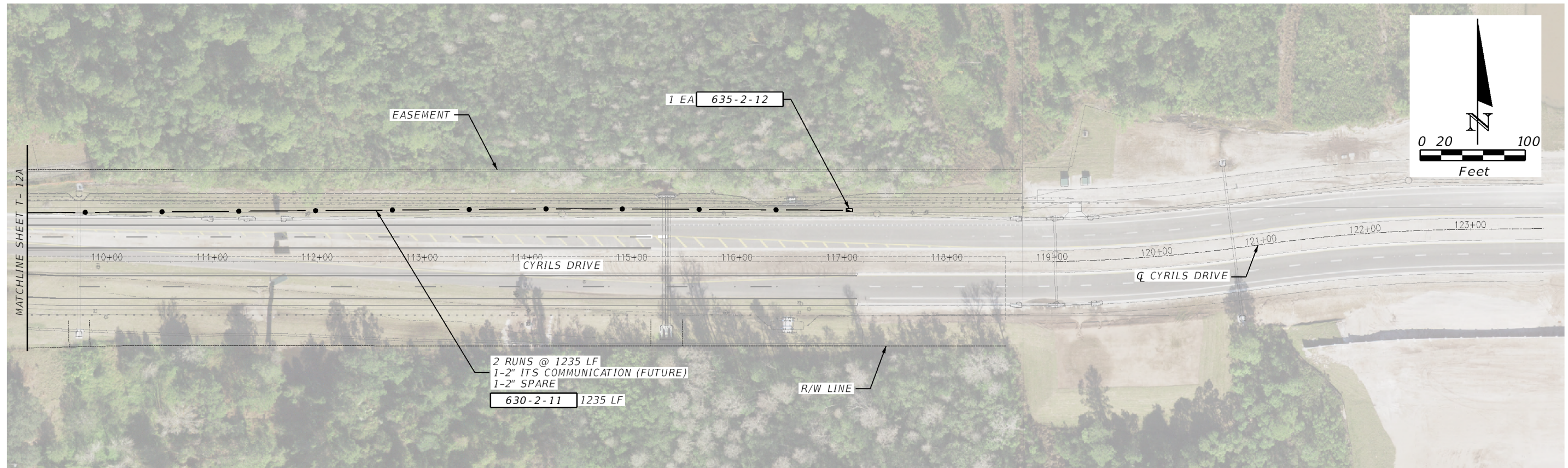
**Osceola County**  
**Florida**  
*"Honoring the past shaping the future."*

*INTERCONNECT PLAN*

SHEET NO.

T-10

THE OFFICIAL RECORD OF THIS SHEET IS THE ELECTRONIC FILE DIGITALLY SIGNED AND SEALED UNDER RULE 61G15-23.004, F.A.C.



5/15/2023 6:04:11 PM SM  
 P:\2190.2 Cyrils Dr & Zum Rd Sig Des\300 - CADD\219021111\ITS\PLANT01.dgn

| REVISIONS |             |      |             |
|-----------|-------------|------|-------------|
| DATE      | DESCRIPTION | DATE | DESCRIPTION |
|           |             |      |             |



**TMC**  
Traffic & Mobility Consultants

TRAFFIC & MOBILITY CONSULTANTS LLC  
 3101 MAGUIRE BLVD, SUITE 265  
 ORLANDO, FL 32803  
 OFFICE: (407) 531-5332  
 FAX: (407) 531-5331  
 JEREMY M. CROWE, P.E. 77064  
 CERTIFICATE OF AUTHORIZATION NO.: 30024



**Osceola County**  
Florida  
"Honoring the past shaping the future."

INTERCONNECT PLAN

SHEET NO.  
T-11

THE OFFICIAL RECORD OF THIS SHEET IS THE ELECTRONIC FILE DIGITALLY SIGNED AND SEALED UNDER RULE 61G15-23.004, F.A.C.



*TO BE INCLUDED  
AT 90% SUBMITTAL*

| REVISIONS |             |      |             |
|-----------|-------------|------|-------------|
| DATE      | DESCRIPTION | DATE | DESCRIPTION |
|           |             |      |             |



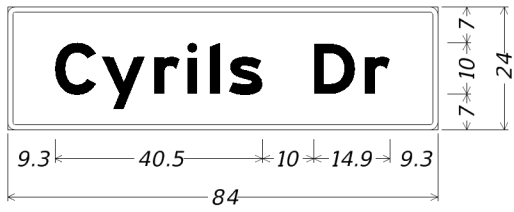
TRAFFIC & MOBILITY CONSULTANTS LLC  
3101 MAGUIRE BLVD, SUITE 265  
ORLANDO, FL 32803  
OFFICE: (407) 531-5332  
FAX: (407) 531-5331  
JEREMY M. CROWE, P.E. 77064  
CERTIFICATE OF AUTHORIZATION NO.: 30024



*STANDARD MAST ARM  
ASSEMBLIES DATA TABLE*

SHEET NO.  
T-13

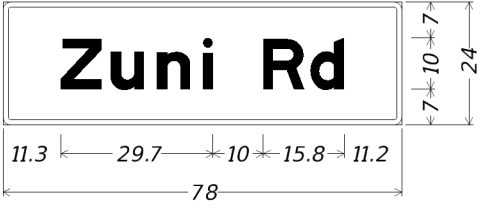
|                       |                               |
|-----------------------|-------------------------------|
| SIGN NUMBER           | A                             |
| QUANTITY              | 2                             |
| WIDTH                 | 7'-0"                         |
| HEIGHT                | 2'-0"                         |
| BORDER WIDTH          | 1.5"                          |
| BORDER RADII          | 0"                            |
| BACKGROUND COLOR      | GMI CV 300-18<br>HUNTER GREEN |
| LEGEND & BORDER COLOR | 3M 490T WHITE                 |
| STATION(S)            | N/A                           |



0" Radius, 1.5" Border, White on Green;  
 "Cyrils Dr", E Mod 2K 60% spacing;  
 Table of distances between letter and object lefts

|     |     |      |     |     |     |      |     |     |     |
|-----|-----|------|-----|-----|-----|------|-----|-----|-----|
| C   | y   | r    | i   | l   | s   | D    | r   |     |     |
| 9.3 | 9.1 | 10.2 | 6.5 | 4.4 | 3.7 | 16.6 | 9.9 | 5.0 | 9.3 |

|                       |                               |
|-----------------------|-------------------------------|
| SIGN NUMBER           | B                             |
| QUANTITY              | 2                             |
| WIDTH                 | 6'-6"                         |
| HEIGHT                | 2'-0"                         |
| BORDER WIDTH          | 1.5"                          |
| BORDER RADII          | 0"                            |
| BACKGROUND COLOR      | GMI CV 300-18<br>HUNTER GREEN |
| LEGEND & BORDER COLOR | 3M 490T WHITE                 |
| STATION(S)            | N/A                           |



0" Radius, 1.5" Border, White on Green;  
 "Zuni Rd", E Mod 2K 60% spacing;  
 Table of distances between letter and object lefts

|      |     |     |     |      |     |     |      |
|------|-----|-----|-----|------|-----|-----|------|
| Z    | u   | n   | i   | R    | d   |     |      |
| 11.3 | 9.7 | 9.0 | 9.0 | 12.0 | 9.2 | 6.6 | 11.2 |

NOTES:  
 1. SIGNS SHALL BE DOUBLE SIDED FREE SWINGING MOUNTED ON CANTILEVER ARM ATTACHED TO THE SIGNAL UPRIGHT.

NOTES:  
 1. SIGNS SHALL BE DOUBLE SIDED FREE SWINGING MOUNTED ON CANTILEVER ARM ATTACHED TO THE SIGNAL UPRIGHT.

5/5/2023 6:04:24 PM SM P:\21190.2 Cyrils Dr & Zuni Rd Sig Des\300 - CADD\21190.2\111111\Signalization\GSWK5G01.dgn

| REVISIONS |             |      |             |
|-----------|-------------|------|-------------|
| DATE      | DESCRIPTION | DATE | DESCRIPTION |
|           |             |      |             |

**TMC**  
Traffic & Mobility Consultants

TRAFFIC & MOBILITY CONSULTANTS LLC  
 3101 MAGUIRE BLVD, SUITE 265  
 ORLANDO, FL 32803  
 OFFICE: (407) 531-5332  
 FAX: (407) 531-5331  
 JEREMY M. CROWE, P.E. 77064  
 CERTIFICATE OF AUTHORIZATION NO.: 30024



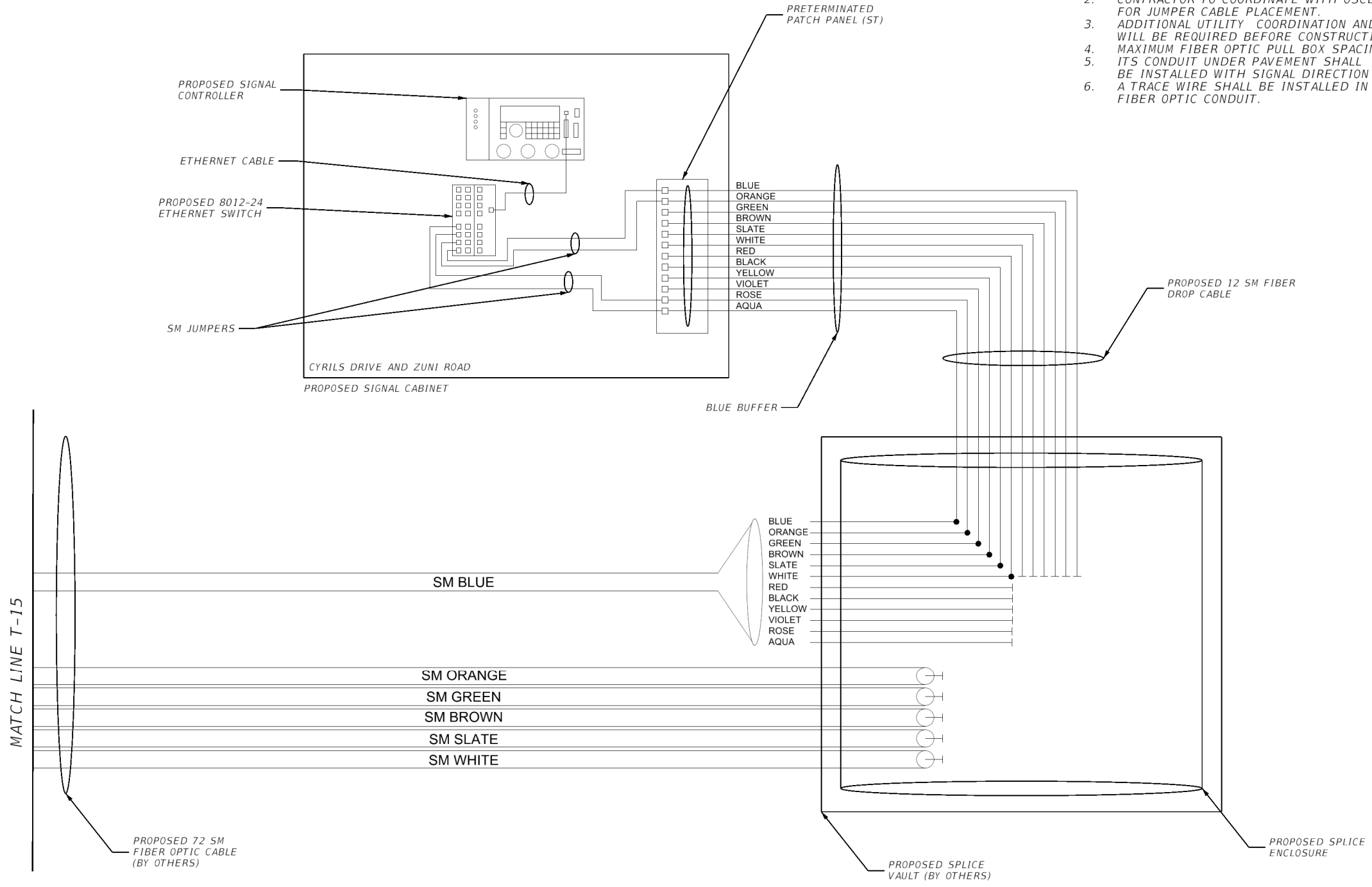
*GUIDE SIGN WORKSHEET*

SHEET NO.  
T-14

THE OFFICIAL RECORD OF THIS SHEET IS THE ELECTRONIC FILE DIGITALLY SIGNED AND SEALED UNDER RULE 61G15-23.004, F.A.C.



5/5/2023 6:04:30 PM SA  
 P:\211902\Cyrils Dr & Zuni Rd Sig Des\300 - CADD\211902\111\NTS\SPDIT01.dgn



NOTES:

1. CONTRACTOR TO COORDINATE WITH OSCEOLA COUNTY FOR PORT ASSIGNMENTS.
2. CONTRACTOR TO COORDINATE WITH OSCEOLA COUNTY FOR JUMPER CABLE PLACEMENT.
3. ADDITIONAL UTILITY COORDINATION AND LOCATION WILL BE REQUIRED BEFORE CONSTRUCTION.
4. MAXIMUM FIBER OPTIC PULL BOX SPACING 1000 FT. ITS CONDUIT UNDER PAVEMENT SHALL BE INSTALLED WITH SIGNAL DIRECTION BORE.
5. A TRACE WIRE SHALL BE INSTALLED IN ALL FIBER OPTIC CONDUIT.

LEGEND:

- PROPOSED FUSION SPLICE
- | FIBER TERMINATION

MATCH LINE T-15

THE OFFICIAL RECORD OF THIS SHEET IS THE ELECTRONIC FILE DIGITALLY SIGNED AND SEALED UNDER RULE 61G15-23.004, F.A.C.

| REVISIONS |             |      |             |
|-----------|-------------|------|-------------|
| DATE      | DESCRIPTION | DATE | DESCRIPTION |
|           |             |      |             |

**TMC**  
 Traffic & Mobility Consultants

TRAFFIC & MOBILITY CONSULTANTS LLC  
 3101 MAGUIRE BLVD, SUITE 265  
 ORLANDO, FL 32803  
 OFFICE: (407)531-5332  
 FAX: (407)531-5331  
 JEREMY M. CROWE, P.E. 77064  
 CERTIFICATE OF AUTHORIZATION NO.: 30024

*SPLICE DIAGRAM*

SHEET NO.  
 T-16