



# Partin Settlement Road Widening

Neptune Road to Lakeshore Boulevard

## Public Information Meeting

January 13, 2022



# Presentation Contents



- Project overview, purpose and need
- Current traffic and future demands
- Previous public involvement activities
- Proposed improvements
- Project schedule
- How you can be involved

# Title VI



This public meeting is being conducted without regard to race, color, national origin, age, sex, religion, disability or family status. Persons wishing to express their concerns relative to compliance with Title VI may do so by contacting:

Hind Huda

Osceola County Civil Rights Program Coordinator

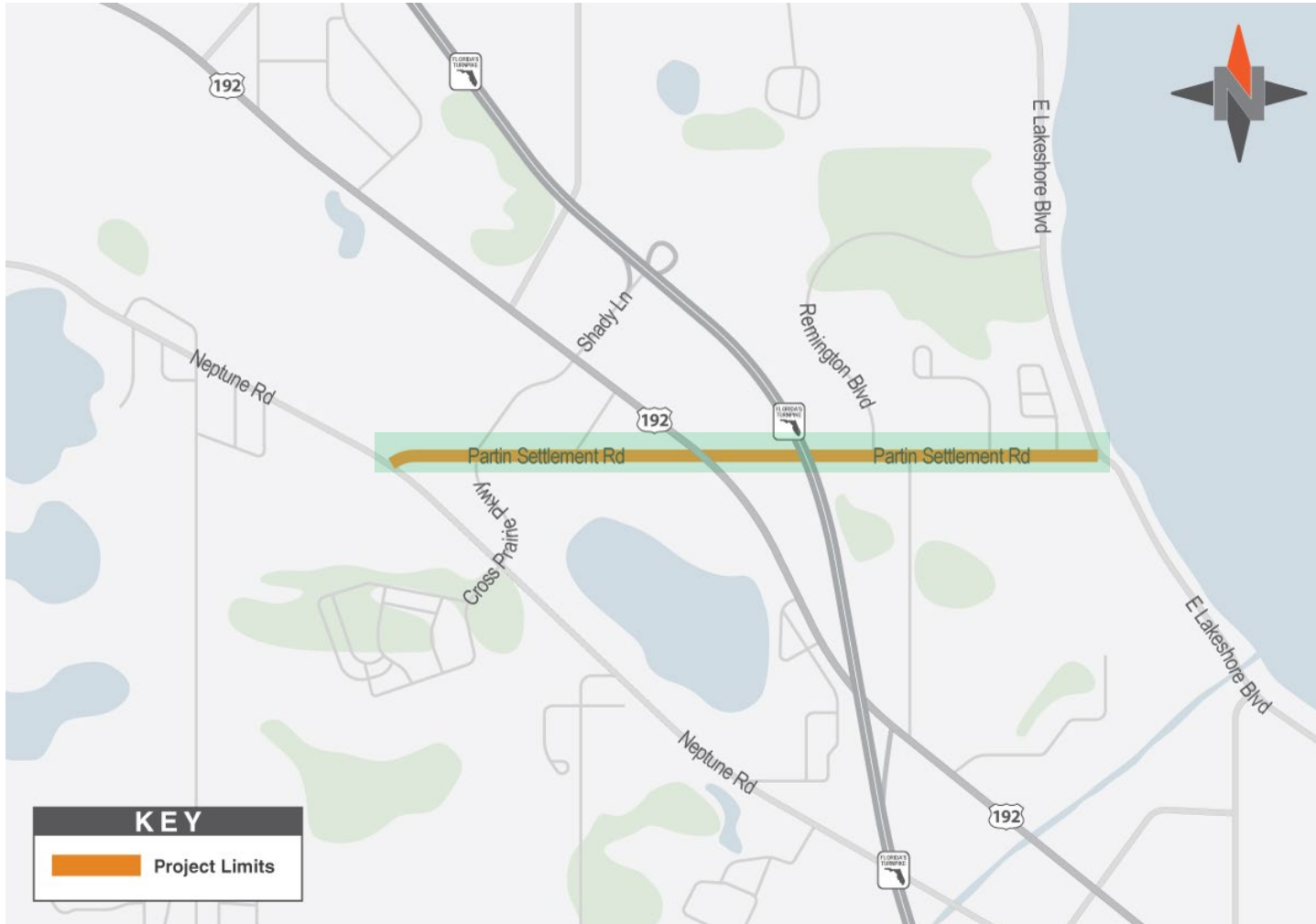
1 Courthouse Square, Suite 4200

Kissimmee, FL 34741

Phone: 407-742-1200 or TTD: 800-955-8771

Email: [hind.huda@osceola.org](mailto:hind.huda@osceola.org)

# Project Location



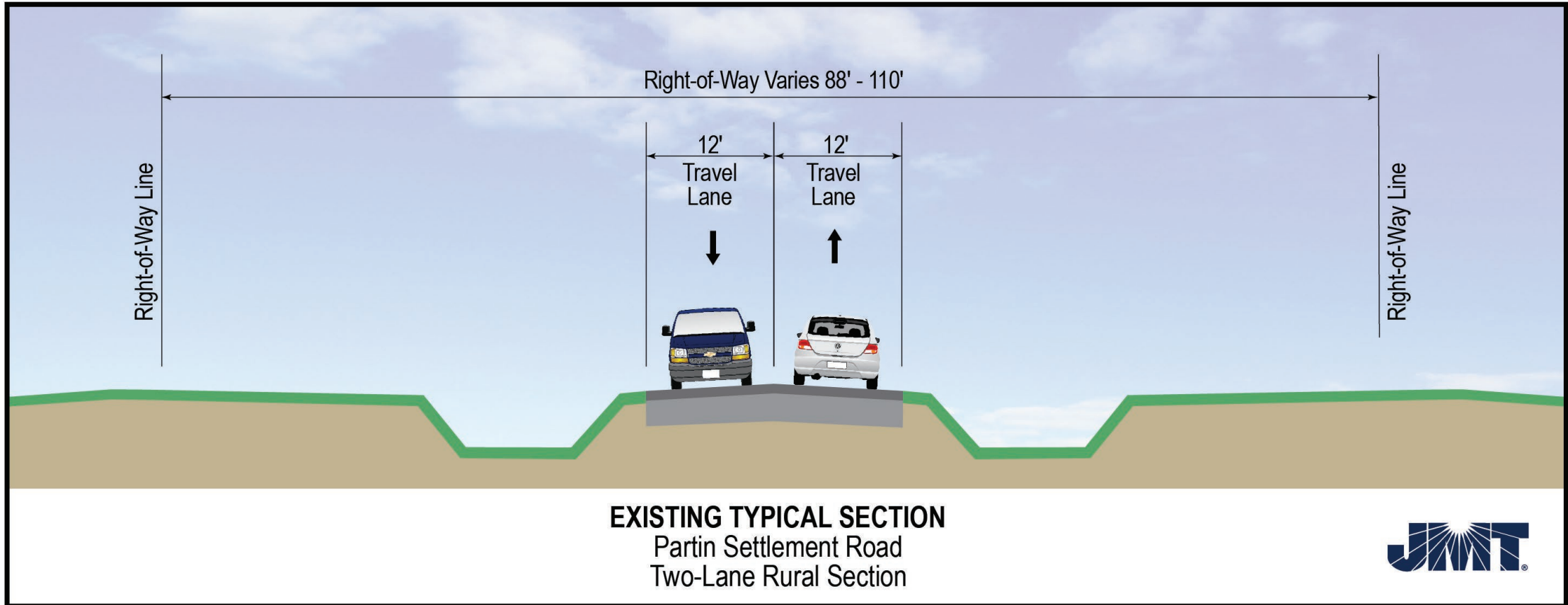
- Location:

- Project extends from Neptune Road to Lakeshore Boulevard, a distance of 2.7 miles

- Purpose:

- Address congestion
- Improve traffic flow
- Enhance safety
- Provide multi-modal options

# Existing Typical Section





# Existing Conditions



- Three lane section in some areas with center two-way left turn lane along part of the corridor
- Intersects with U.S. 192 and crosses over Florida's Turnpike
- Intermittent sidewalk
- Open drainage ditches



# Project History



- Partin Settlement Road identified as a priority by Osceola County
- Alternatives Study began in spring 2020 and included:
  - Environmental analysis
  - Sociocultural effects analysis
  - Current & projected traffic analysis



# Public Involvement

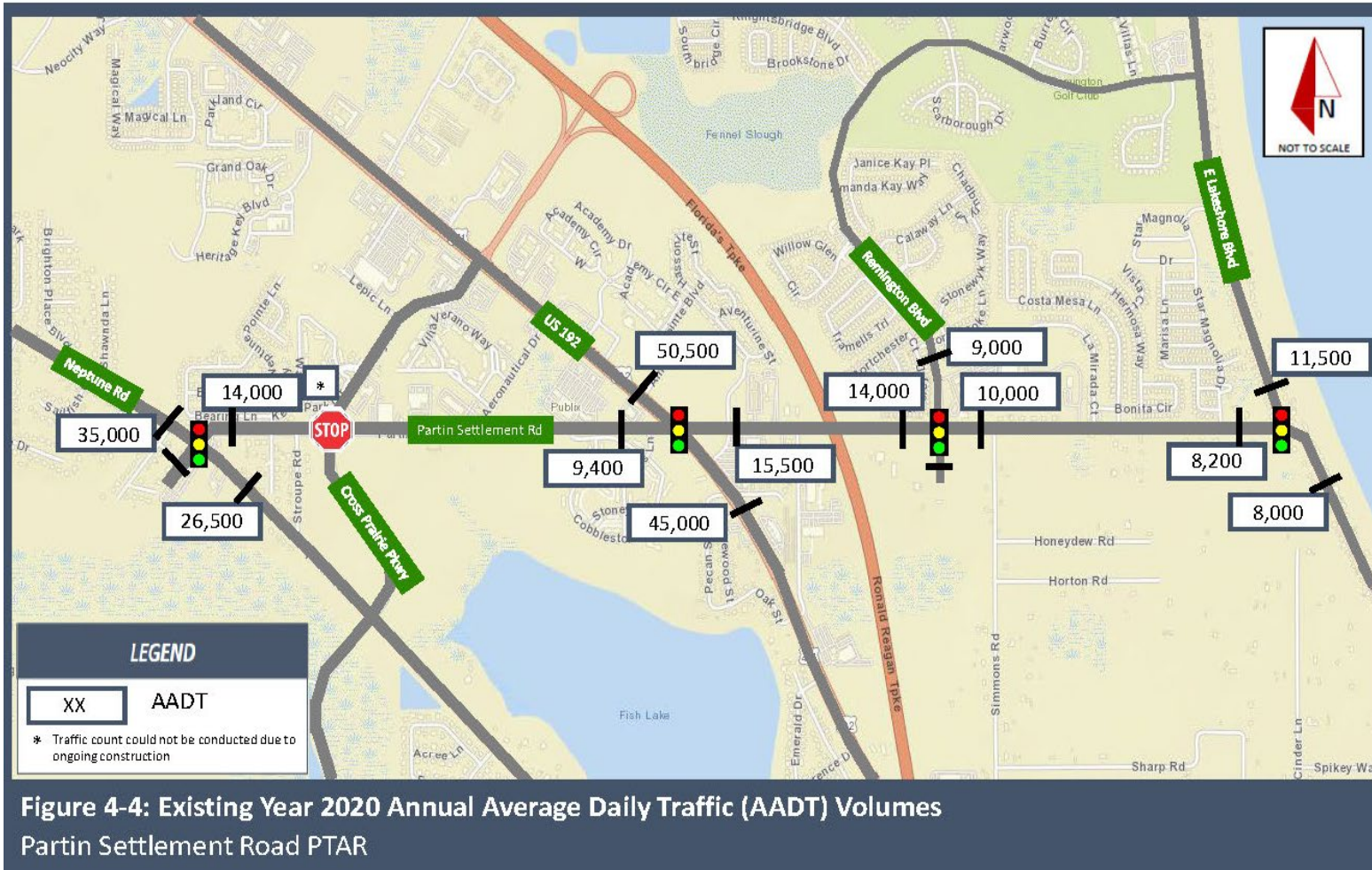


- Public meeting held January 21, 2021
  - 27 people attended virtually
  - 14 people attended in person
  - 27 comments/questions
- Considering all public comments, the project team refined the alternatives and developed a preferred option
- The preferred option was approved by the Osceola County Board of County Commissioners on March 1, 2021





# Current Traffic Volumes



- Current average daily traffic counts range from 8,200 to 14,000 vehicles
- Busiest areas between Neptune Road and Cross Prairie Parkway, and U.S. 192 to Remington Boulevard



# Traffic Projections - 2045

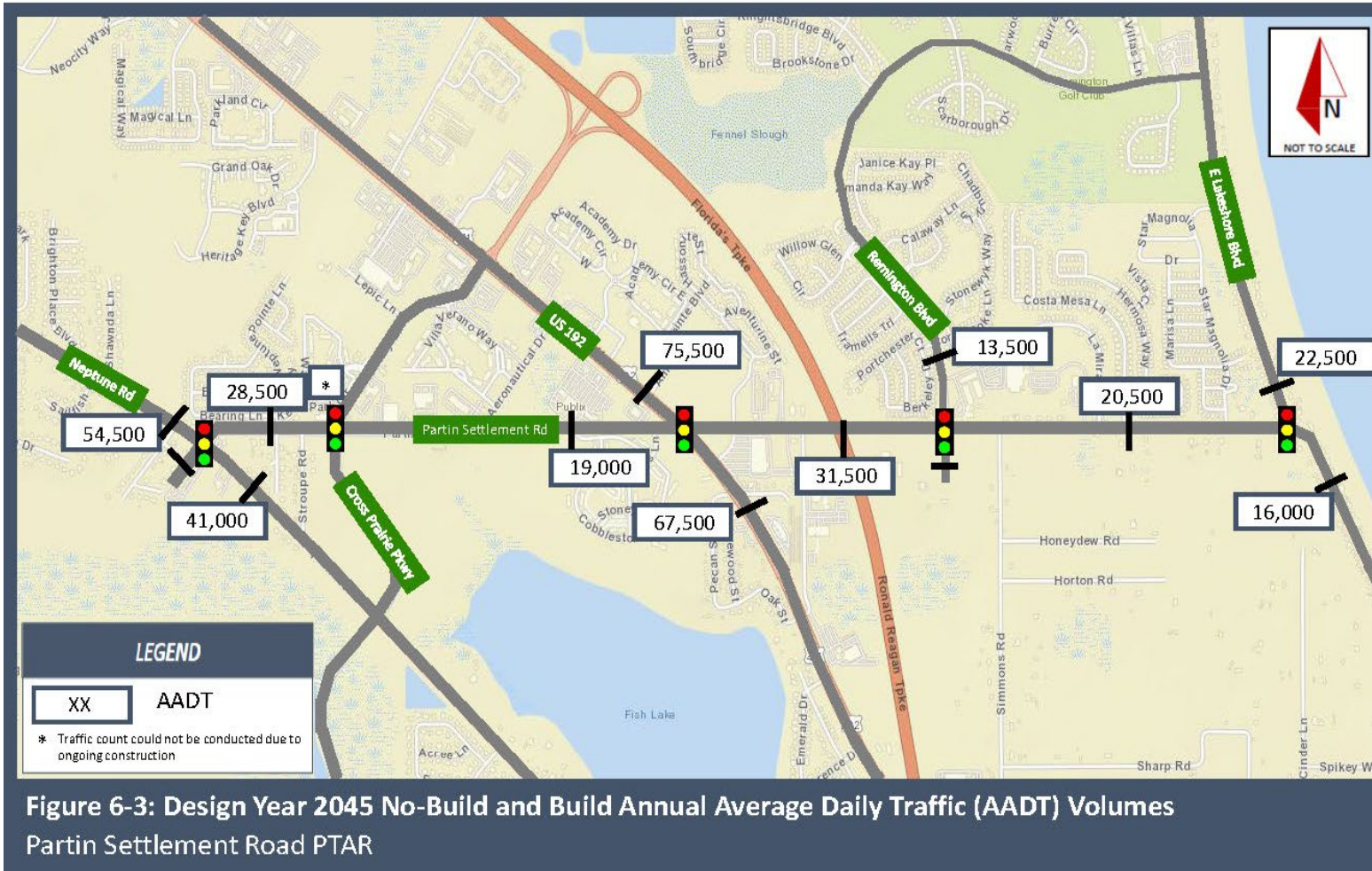
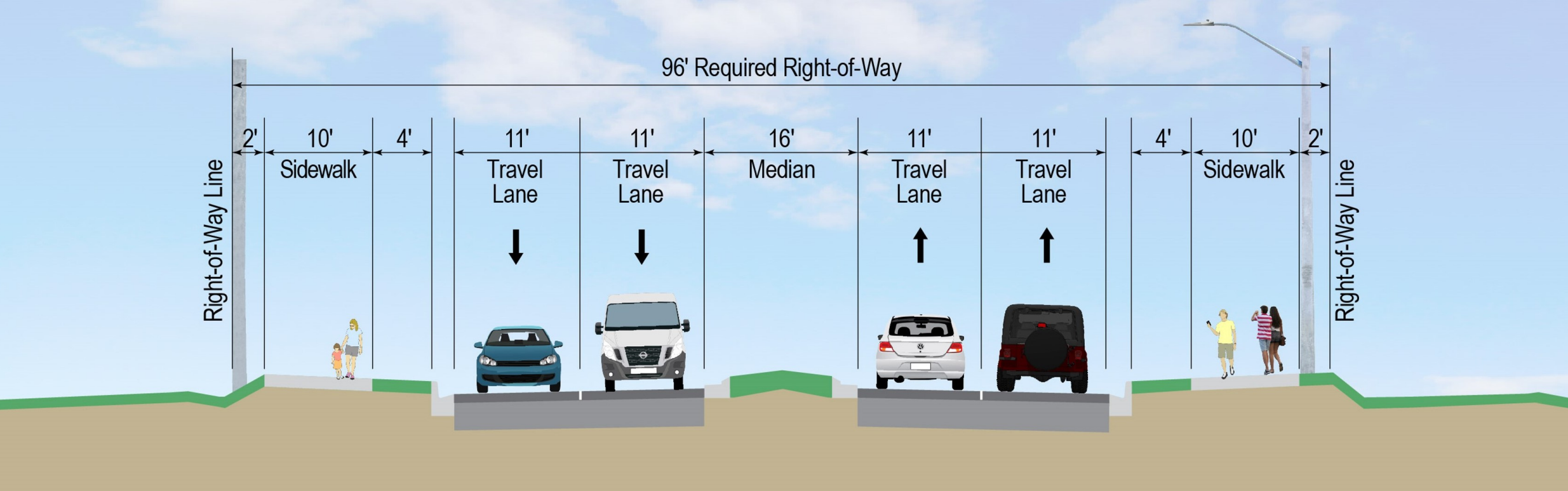


Figure 6-3: Design Year 2045 No-Build and Build Annual Average Daily Traffic (AADT) Volumes  
Partin Settlement Road PTAR

- Estimated average daily traffic volume in 2045 ranges from 19,000 to 28,500 vehicles
- Traffic projections include future development and planned land use
- Traffic demands will require four lanes to maintain acceptable operations

# Typical Section

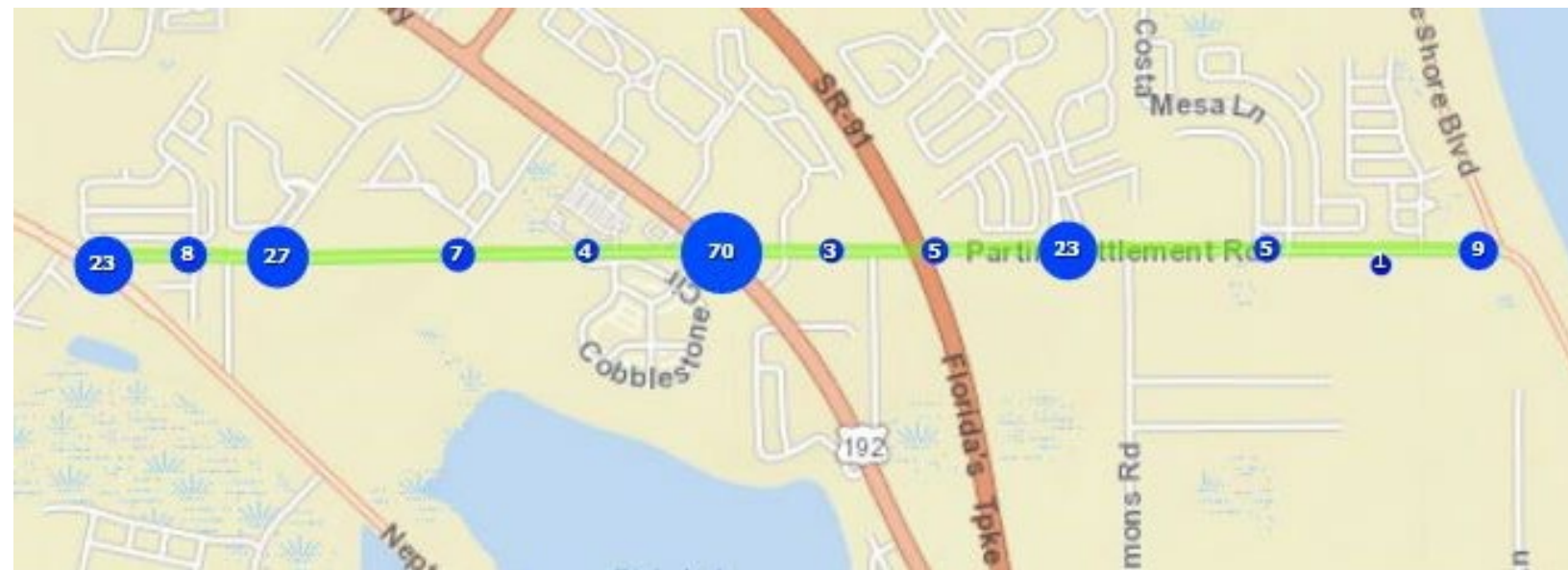




# Crash History

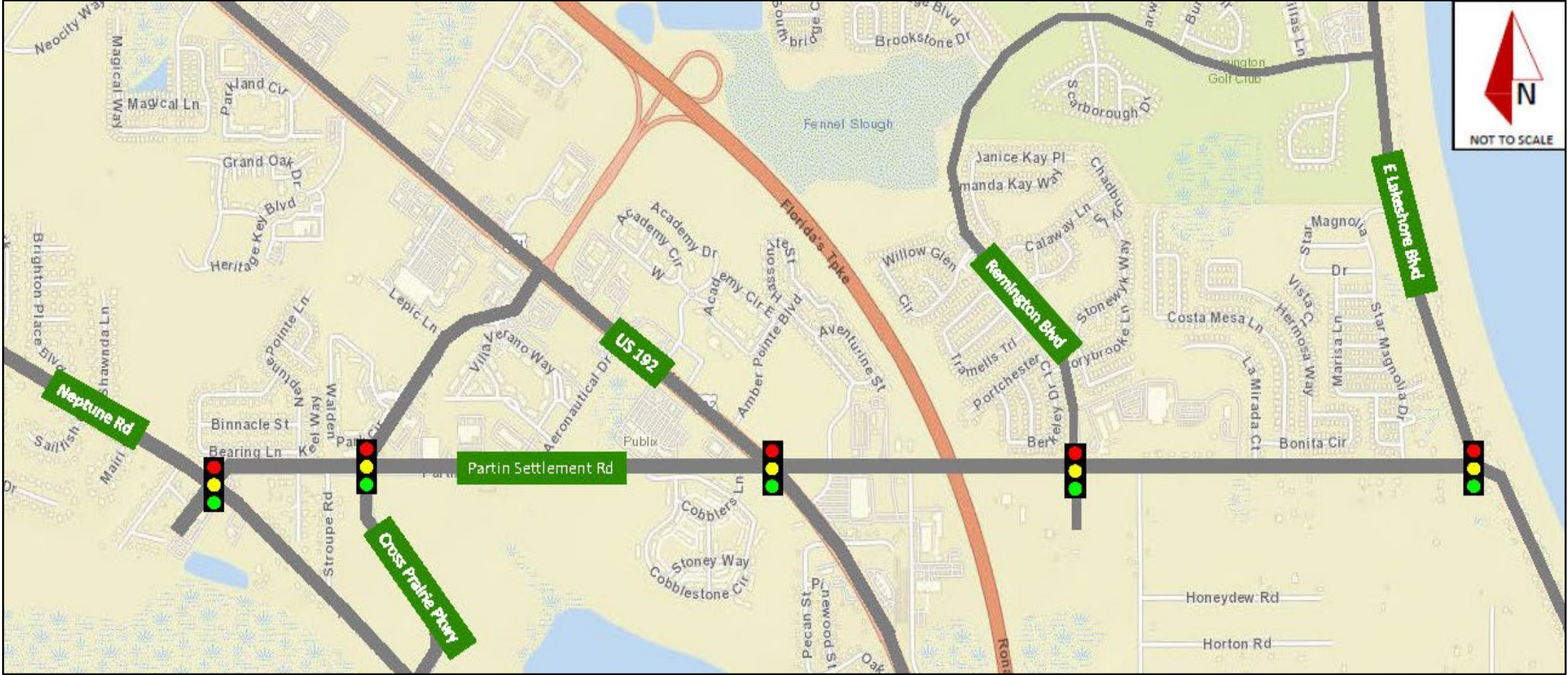


- 185 crashes along Partin Settlement Road (2015-2020)
- 70 collisions at the U.S. 192 intersection
- 32% resulted in injury
- 61% rear-end crashes
- 16% involved left-turn movements



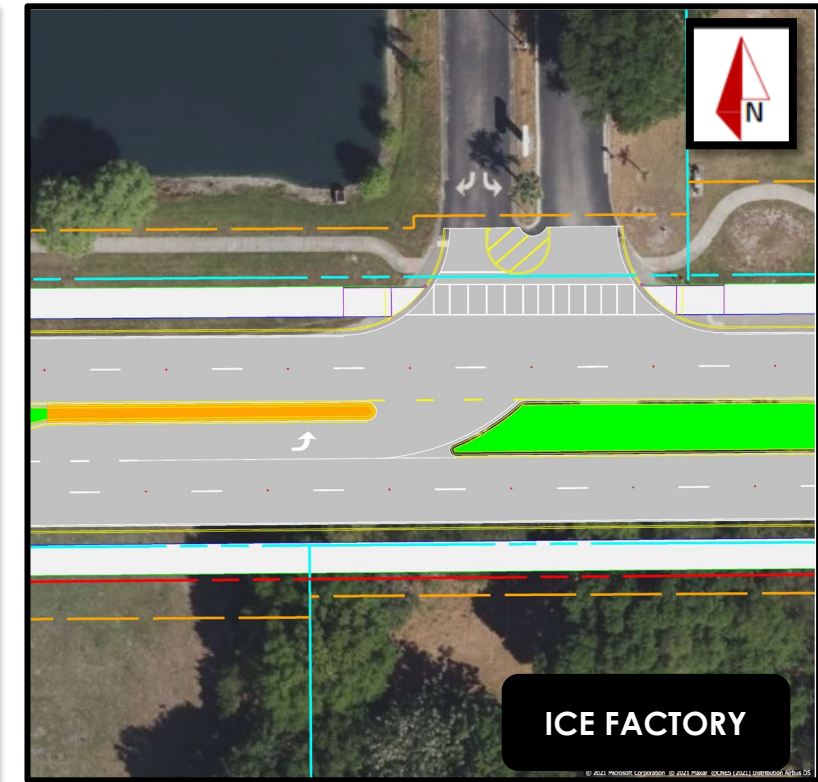
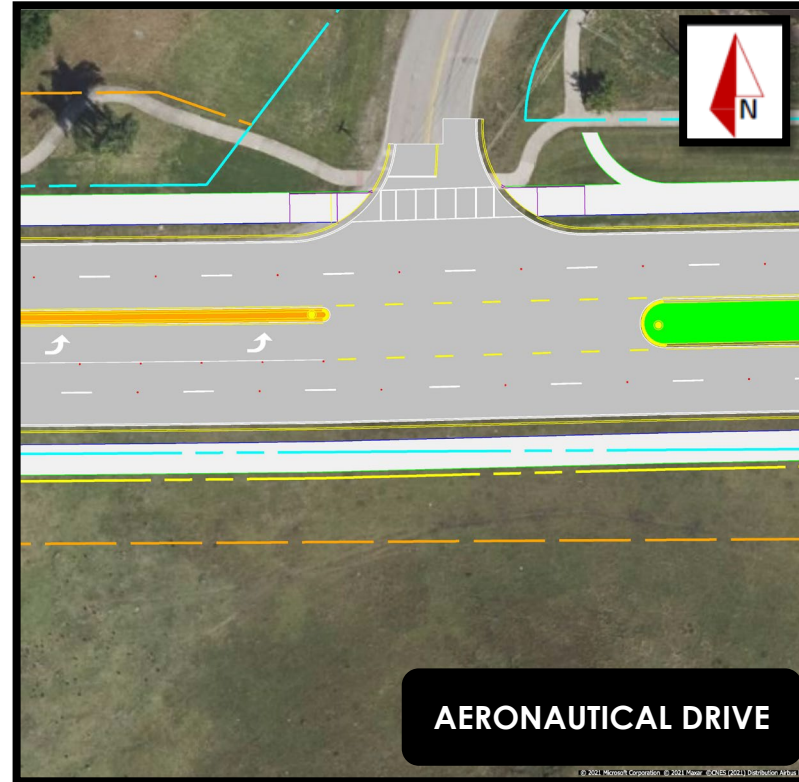
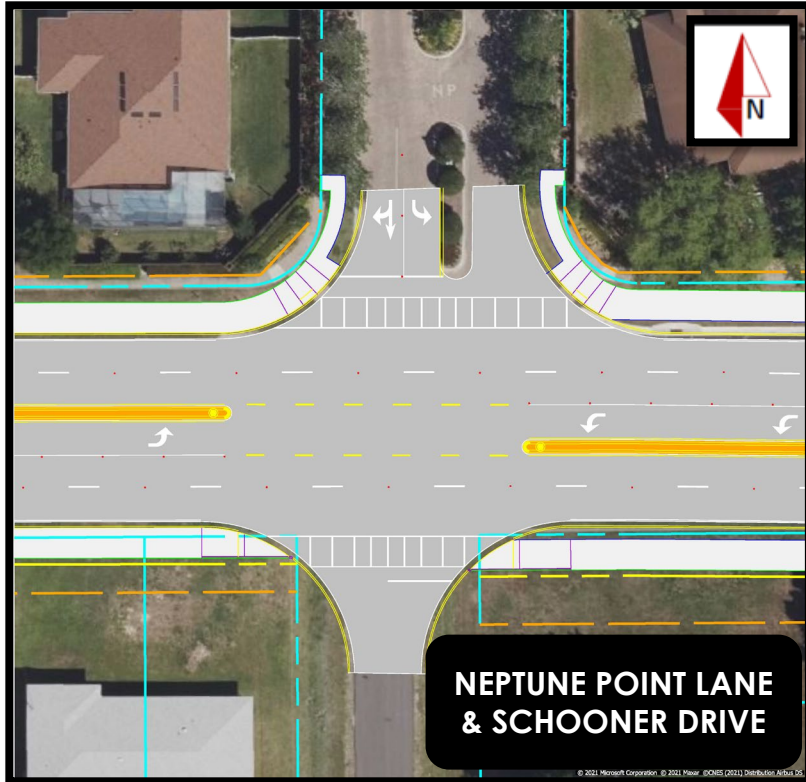


# Traffic Signals

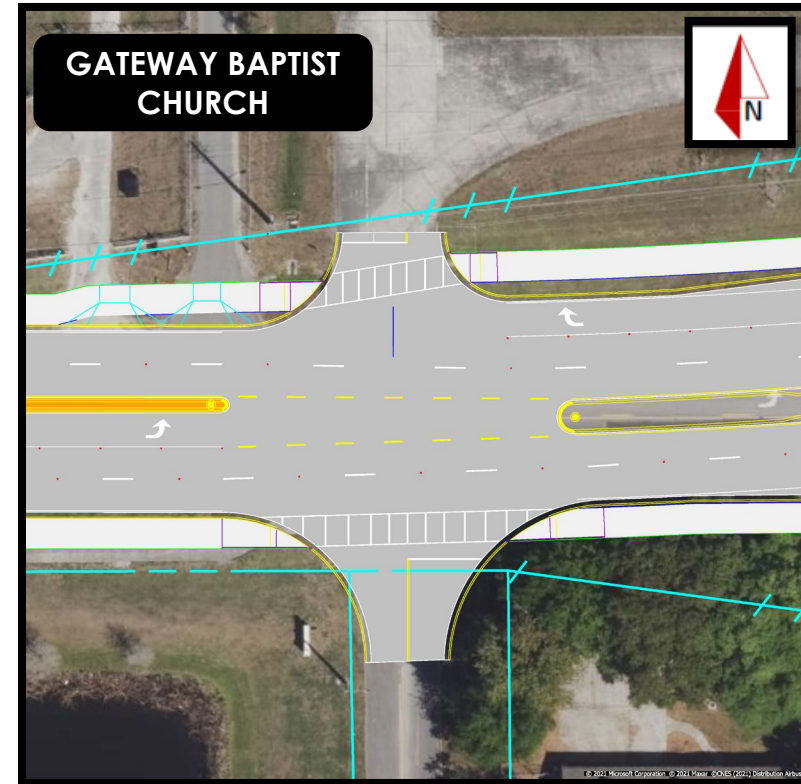
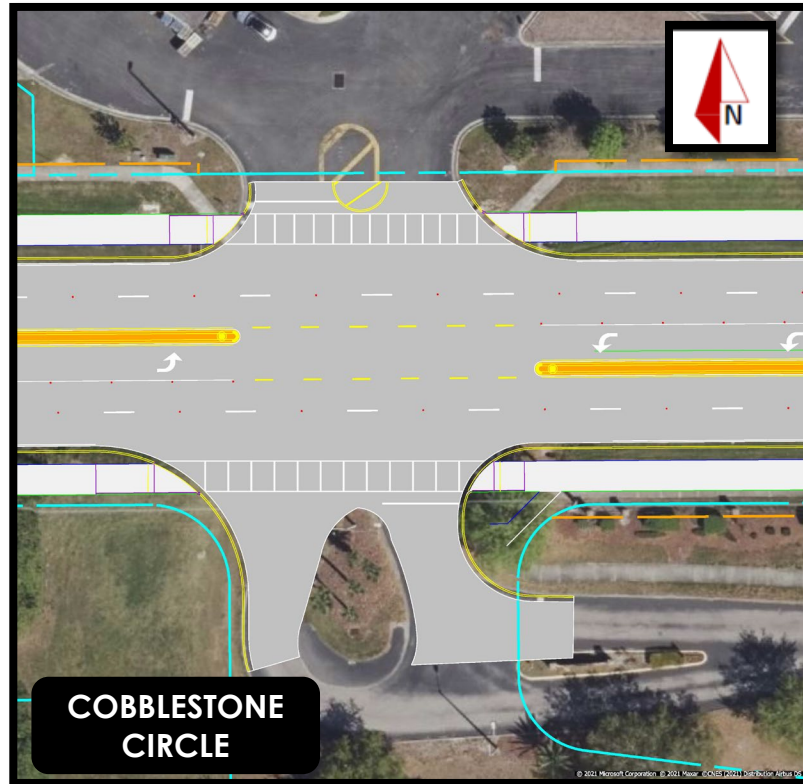




# Access Management

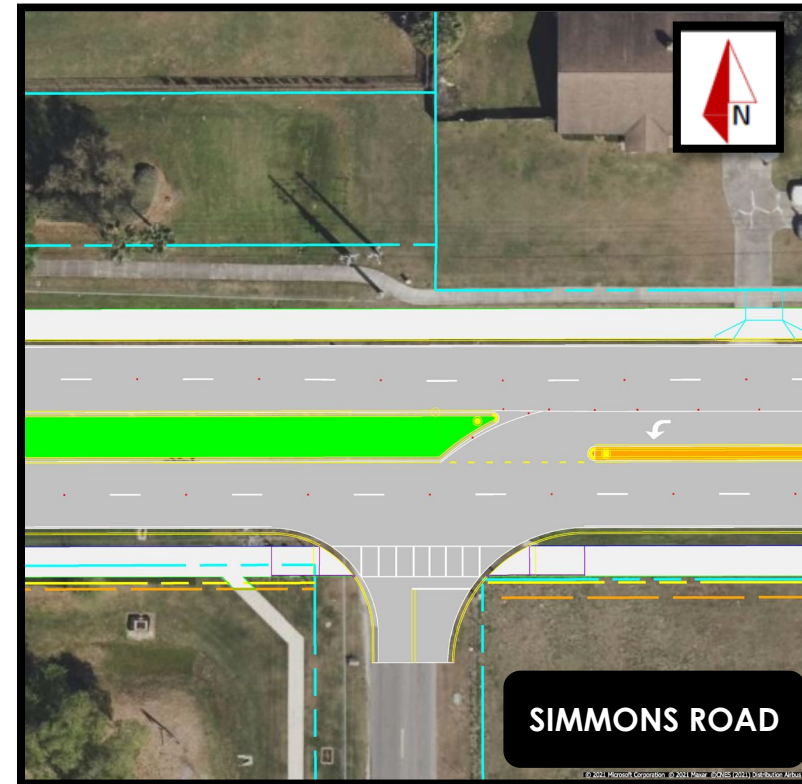
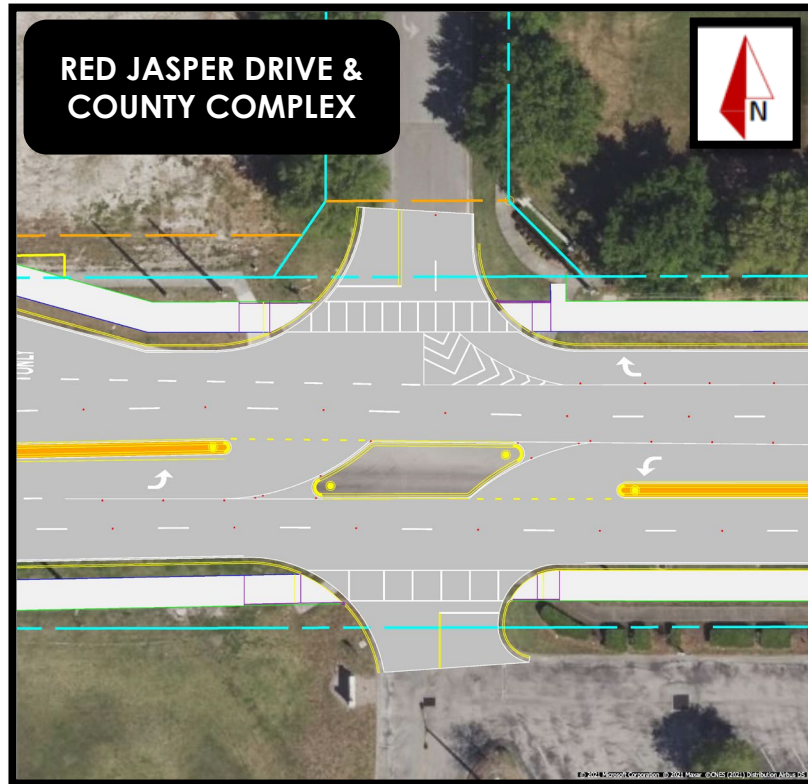


# Access Management



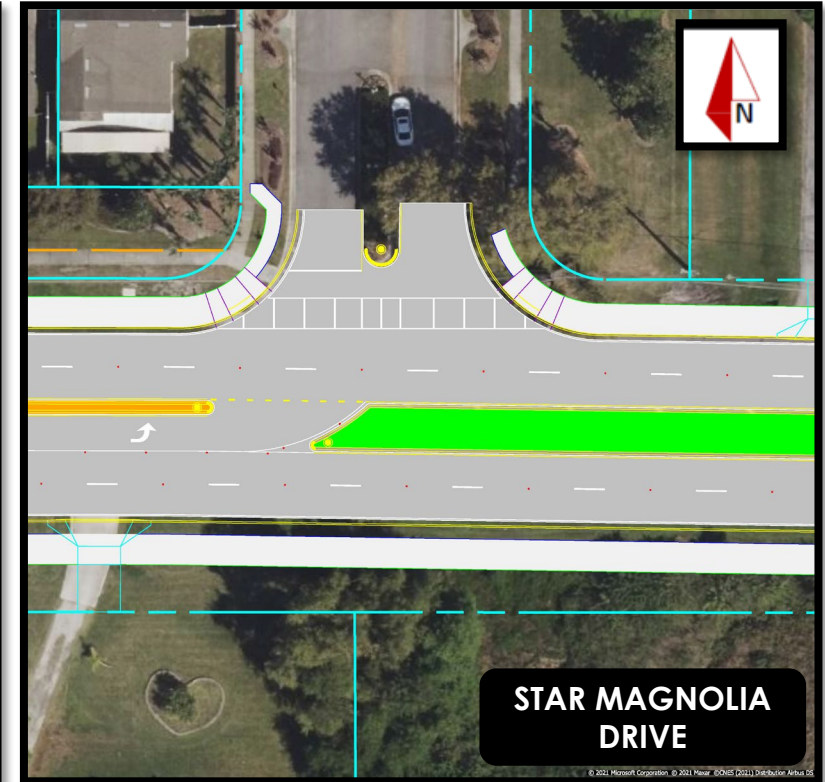
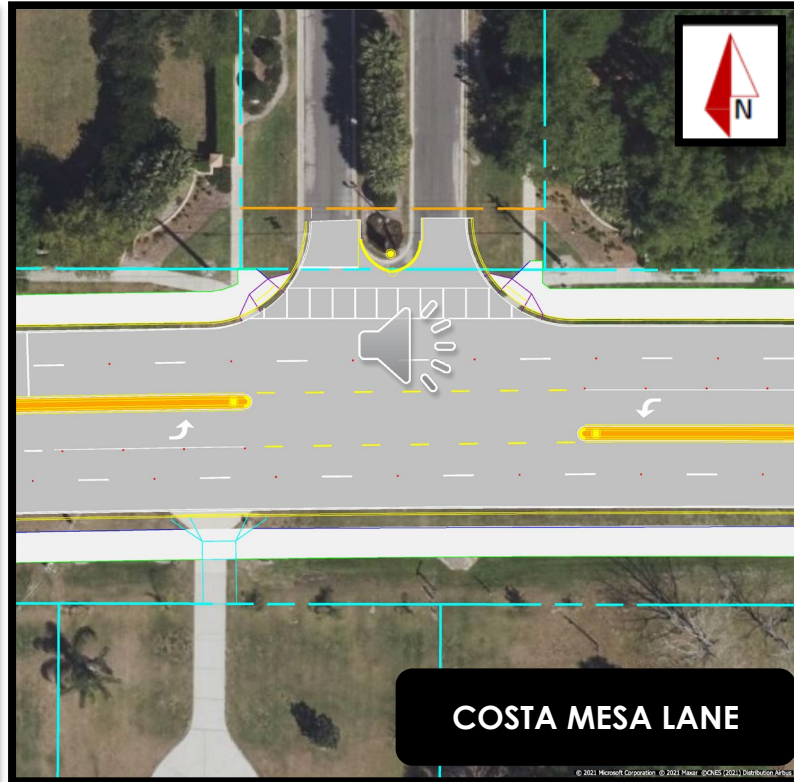
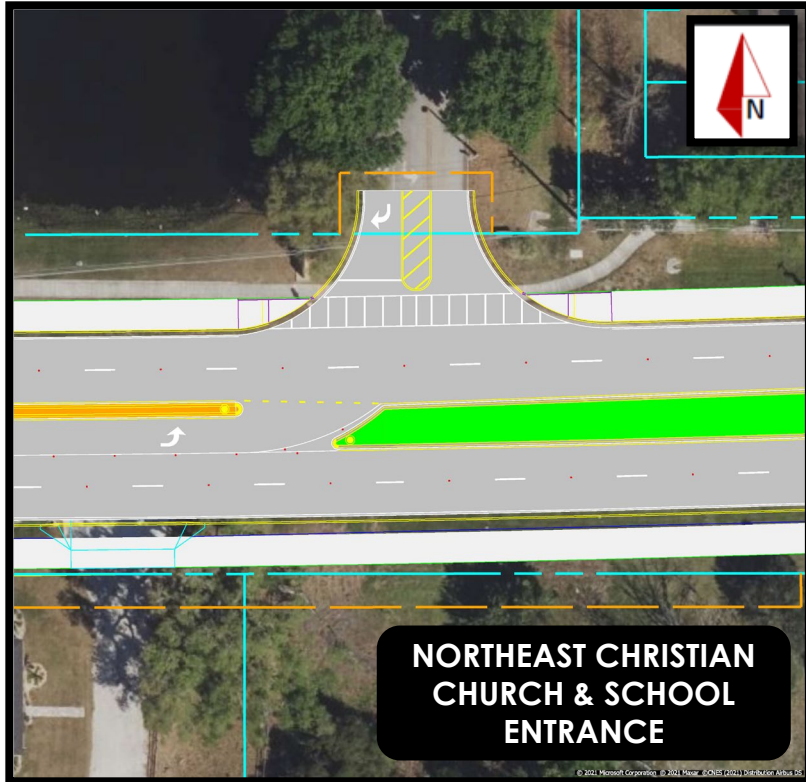


# Access Management





# Access Management



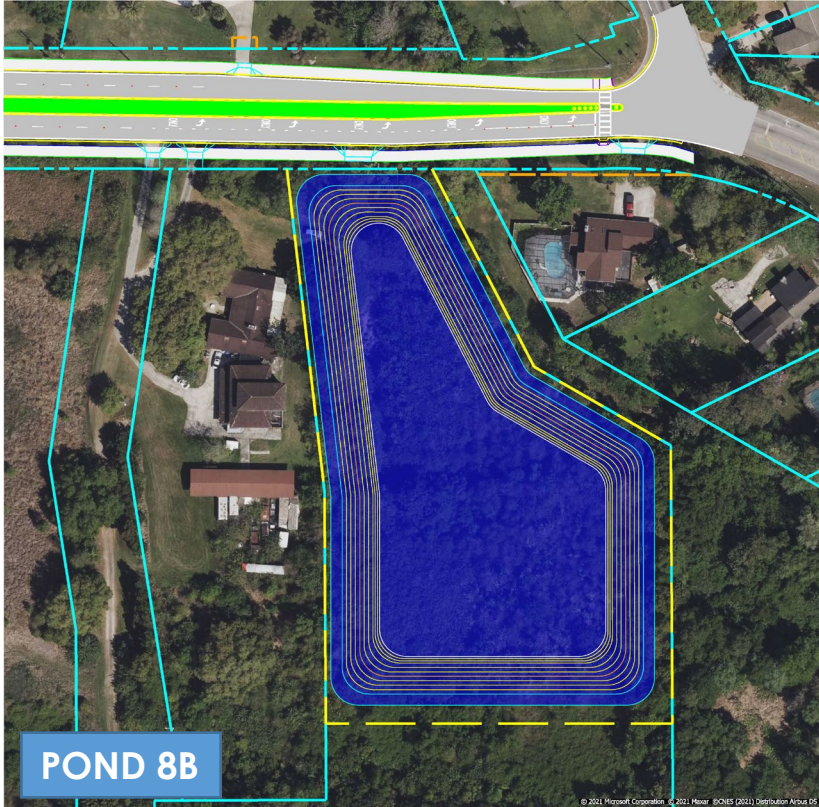
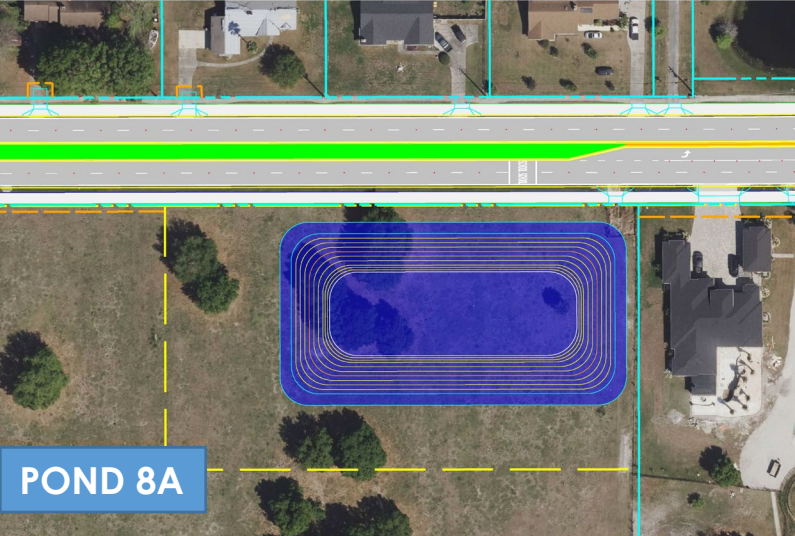
# Construction Impacts



- Partin Settlement Road will remain open during construction
- Limit lane closures to off-peak hours
- Access maintained at all times to homes and businesses
- Contractors will be required to limit dust and control erosion during construction
- Daytime and nighttime work can be expected



# Stormwater Ponds



# Right-of-Way Process



## For More Information, Contact:

Sally Myers

Right-of-Way and Asset Manager

Osceola County

407-742-0502

[Sally.Myers@osceola.org](mailto:Sally.Myers@osceola.org)

- Additional right-of-way will be needed for this project
- No full parcels will be needed, and no relocations are anticipated
- Osceola County will contact the affected property owners directly to begin discussions



# Project Schedule



## Final Design

- Completion in fall 2022

## Right-of-Way

- Acquisition to begin early 2022


## Construction

- Expected to begin summer 2023

# We Want to Hear From You



- Speak with project team members
- Complete a comment form and drop it in the comments box
- Take a comment form with you and send it back to the address shown on the form
- Make a comment on the project website at [www.Osceola.org/go/partinsettlement](http://www.Osceola.org/go/partinsettlement)
- Call or email the project team directly after the meeting by phone at 407-742-0533 or email at [Daniel.Kelly@osceola.org](mailto:Daniel.Kelly@osceola.org)
- Please submit comments by January 24, 2022



Partin Settlement Road Widening  
Public Information Meeting  
Thursday, January 13, 2022

Project Number: PS-20-11504-DG

**PUBLIC COMMENT FORM**

Name \_\_\_\_\_ Phone: \_\_\_\_\_  
Address: \_\_\_\_\_  
City: \_\_\_\_\_ State: \_\_\_\_\_ Zip: \_\_\_\_\_  
Email: \_\_\_\_\_

Please use this comment form to express your opinions regarding the proposed widening of Partin Settlement Road to address capacity and safety needs. You may also email Osceola County Project Manager Daniel Kelly directly at [Daniel.Kelly@osceola.org](mailto:Daniel.Kelly@osceola.org). Comments are always welcome. However, comments received by January 24, 2022, will become part of the record for this meeting.

**COMMENTS:**

\_\_\_\_\_  
\_\_\_\_\_  
\_\_\_\_\_  
\_\_\_\_\_  
\_\_\_\_\_  
\_\_\_\_\_  
\_\_\_\_\_  
\_\_\_\_\_  
\_\_\_\_\_

Please send comments or questions via email or U.S. Mail to:

Mr. Daniel Kelly  
Osceola County Project Manager  
1 Courthouse Square, Suite 3100  
Kissimmee, FL 34741  
[Daniel.Kelly@osceola.org](mailto:Daniel.Kelly@osceola.org)

# For More Information



Go to the project webpage at [www.Osceola.org/go/partinsettlement](http://www.Osceola.org/go/partinsettlement)

The screenshot shows the website's header with a navigation menu including 'BOARD MEETINGS', 'SERVICES', 'COMMISSIONERS' CORNER', 'AGENCIES & DEPARTMENTS', 'HOW DO I', and 'ABOUT OSCEOLA'. Below the header is a search bar and social media icons. The main content area features a sidebar with 'Transportation Projects List' (Project Details, Project Documents, Comment Form) and 'Partin Settlement Rd Project Contact Info' (Email: Conroy.Jacobs@Osceola.org, Phone: 407-742-0557, Address: 1 Courthouse Square, Suite 3100). The main heading is 'Partin Settlement Road Project' with a sub-heading 'PROJECT DETAILS' and a map showing the project location on Partin Settlement Rd.

Contact:

Daniel Kelly

Osceola County Project Manager

Transportation & Transit Dept.

1 Courthouse Square, Suite 3100

Kissimmee, FL 34741

[Daniel.Kelly@osceola.org](mailto:Daniel.Kelly@osceola.org)

407-742-0533



Thank You  
for Attending