



Welcome

Marigold Avenue  
Safety Improvements  
from San Lorenzo Road to Peabody Road

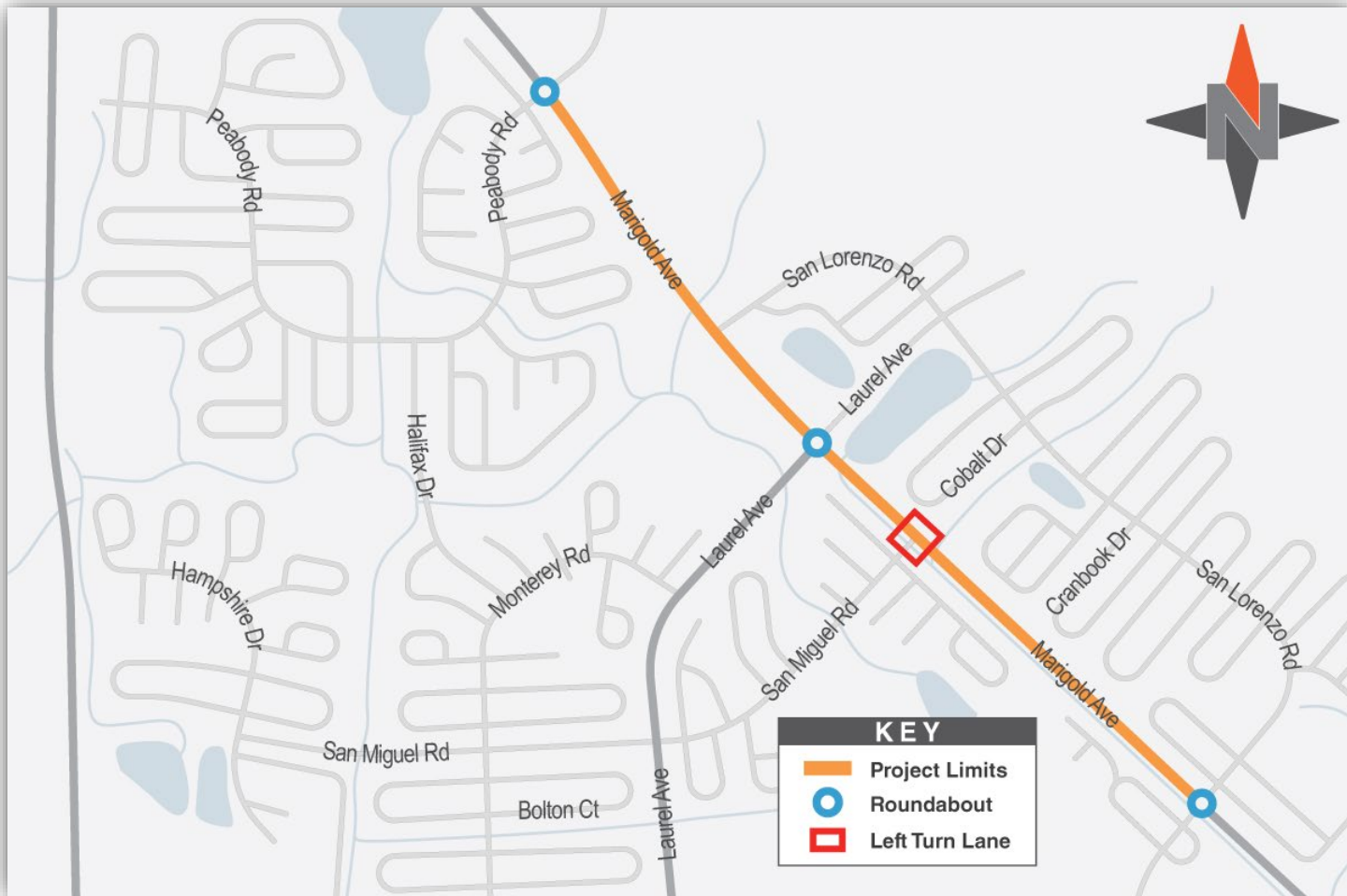
Public Meeting  
August 4, 2022



- Explain project goals
- Present the recommended improvements
- Hear your feedback

This public meeting is being conducted without regard to race, color, national origin, age, sex, religion, disability or family status. Persons wishing to express their concerns relative to compliance with Title VI may do so by contacting:

Brenda Hernandez  
Osceola County Diversity, Inclusion & Equal Opportunity  
Programs Manager  
1 Courthouse Square, Suite 4200  
Kissimmee, FL 34741  
Phone: 407-742-1208 or TTD: 800-955-8771  
Email: [Brendai.Hernandez@osceola.org](mailto:Brendai.Hernandez@osceola.org)



- Location:

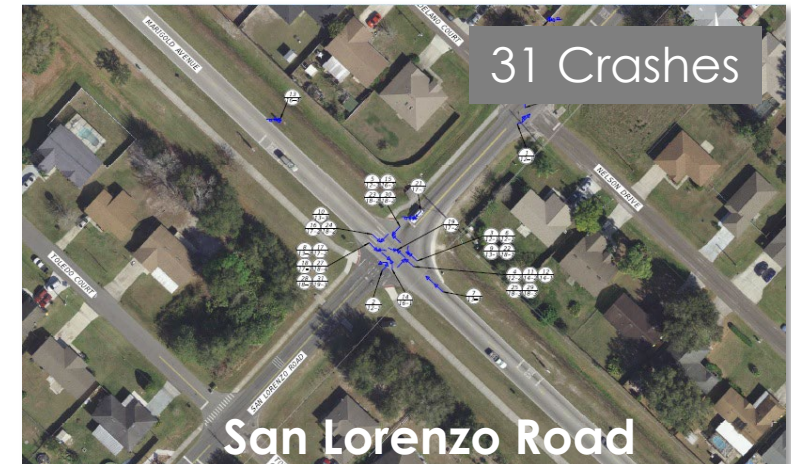
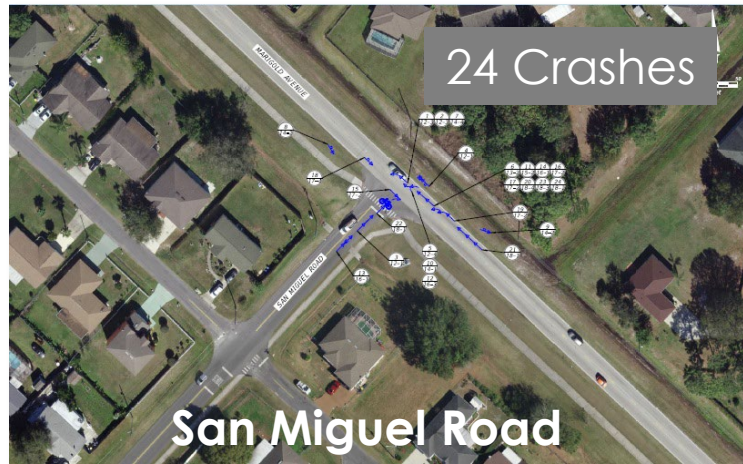
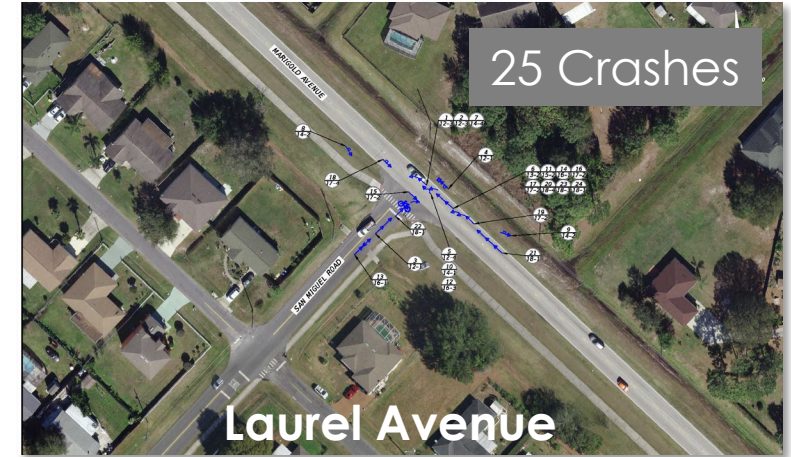
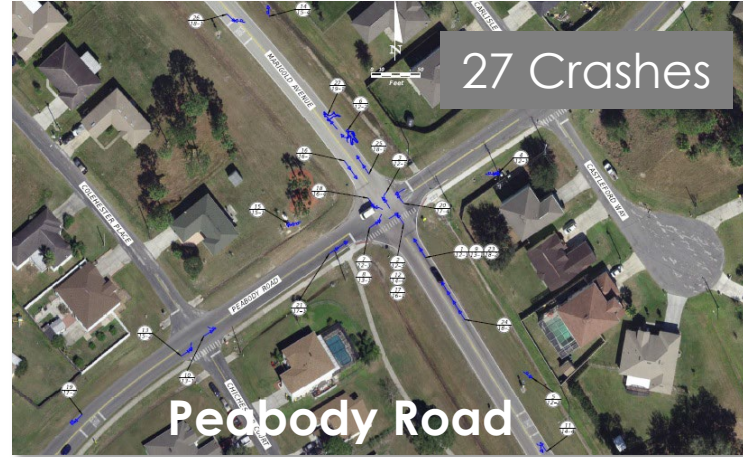
- Project corridor extends from San Lorenzo Road to Peabody Road, a distance of nearly 1.5 miles

- Purpose:

- Enhance safety
- Improve traffic flow

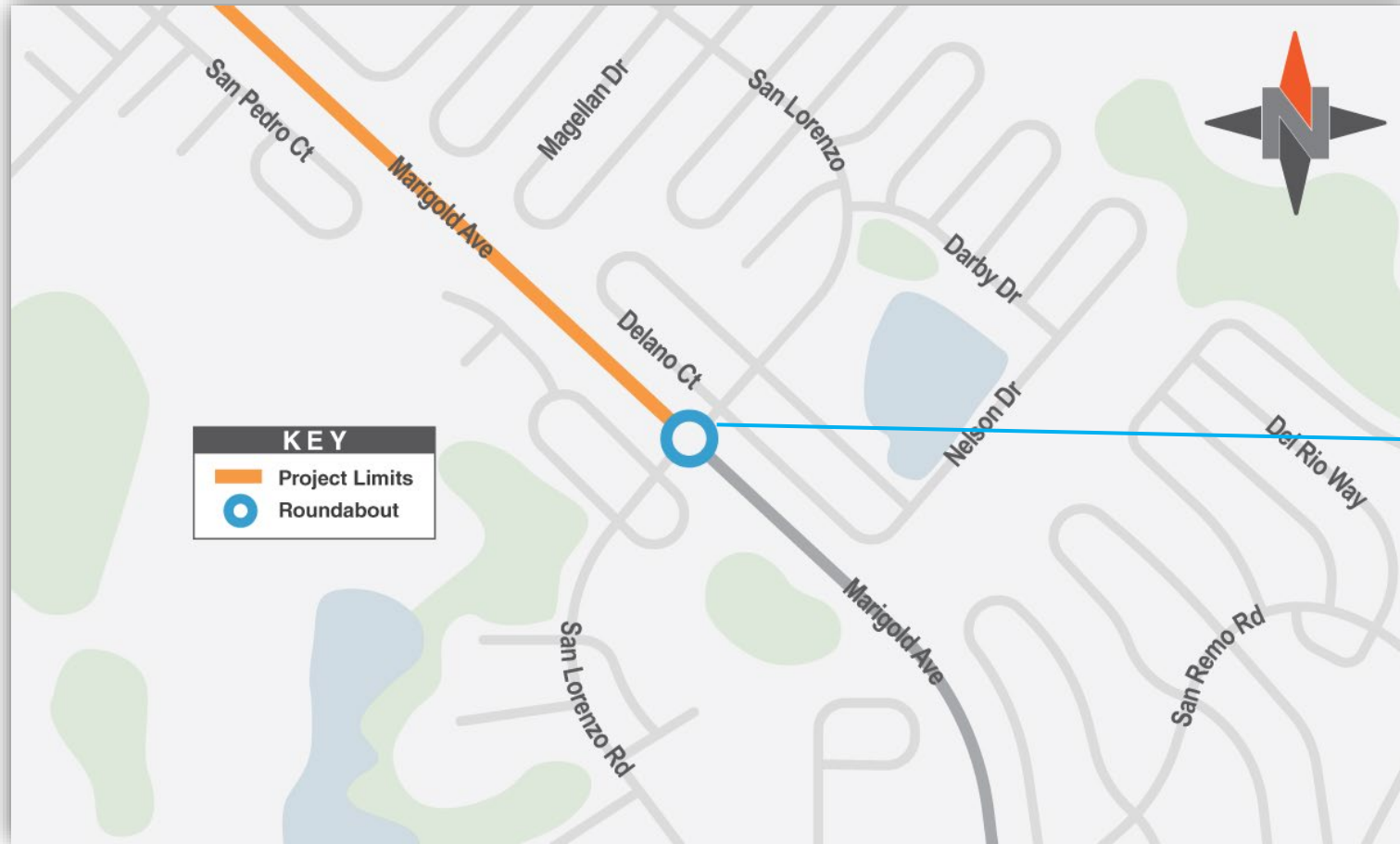
## 2020 FDOT Safety Study

- 107 crashes at the study intersections from January 2012 through March 2019
- 70 injury crashes resulting in 149 injuries
- More than 50% of the crashes were left turn or angle crashes.



Diagrams from FDOT Safety Study showing types of crashes

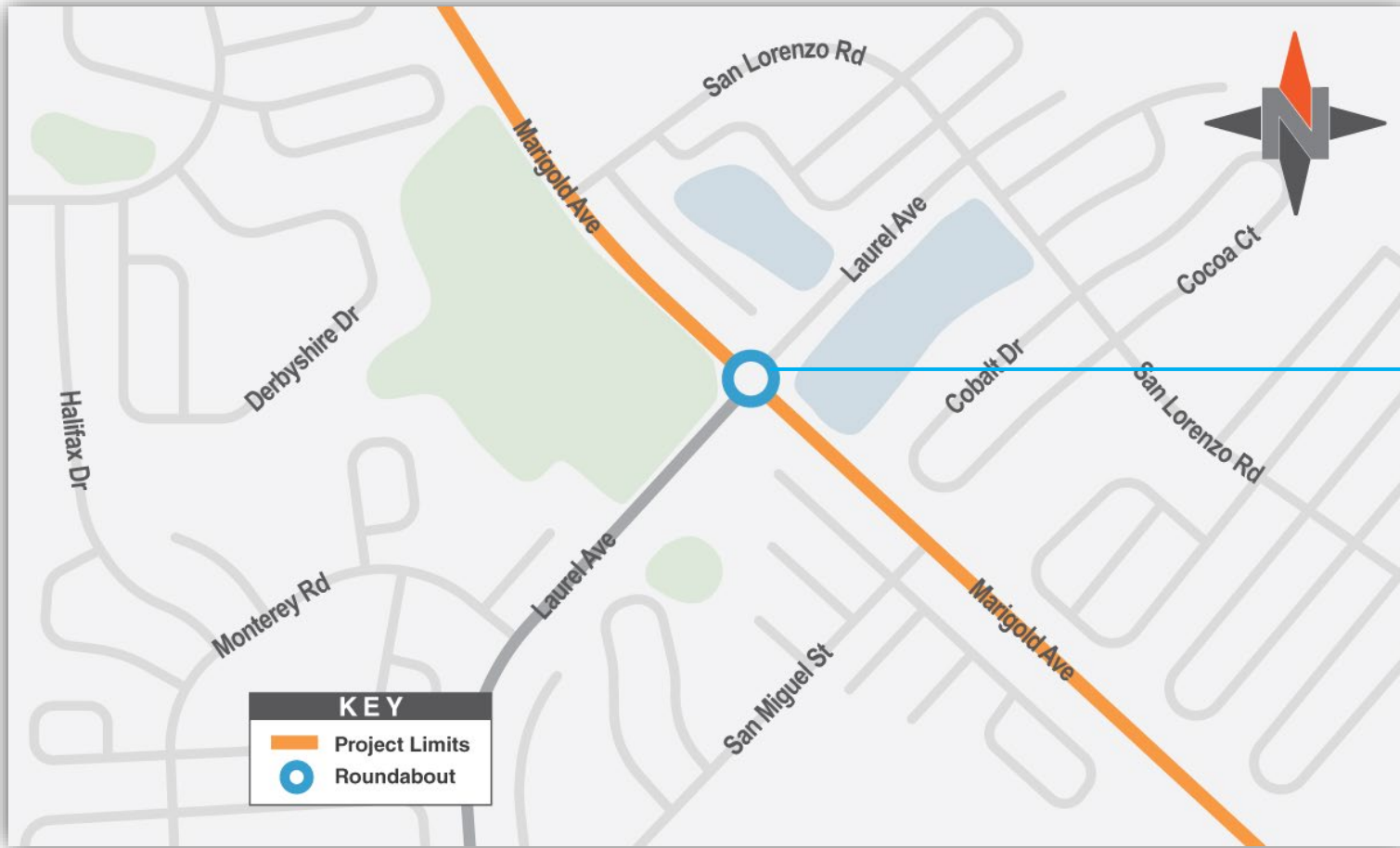
## San Lorenzo Road



# Roundabout Locations

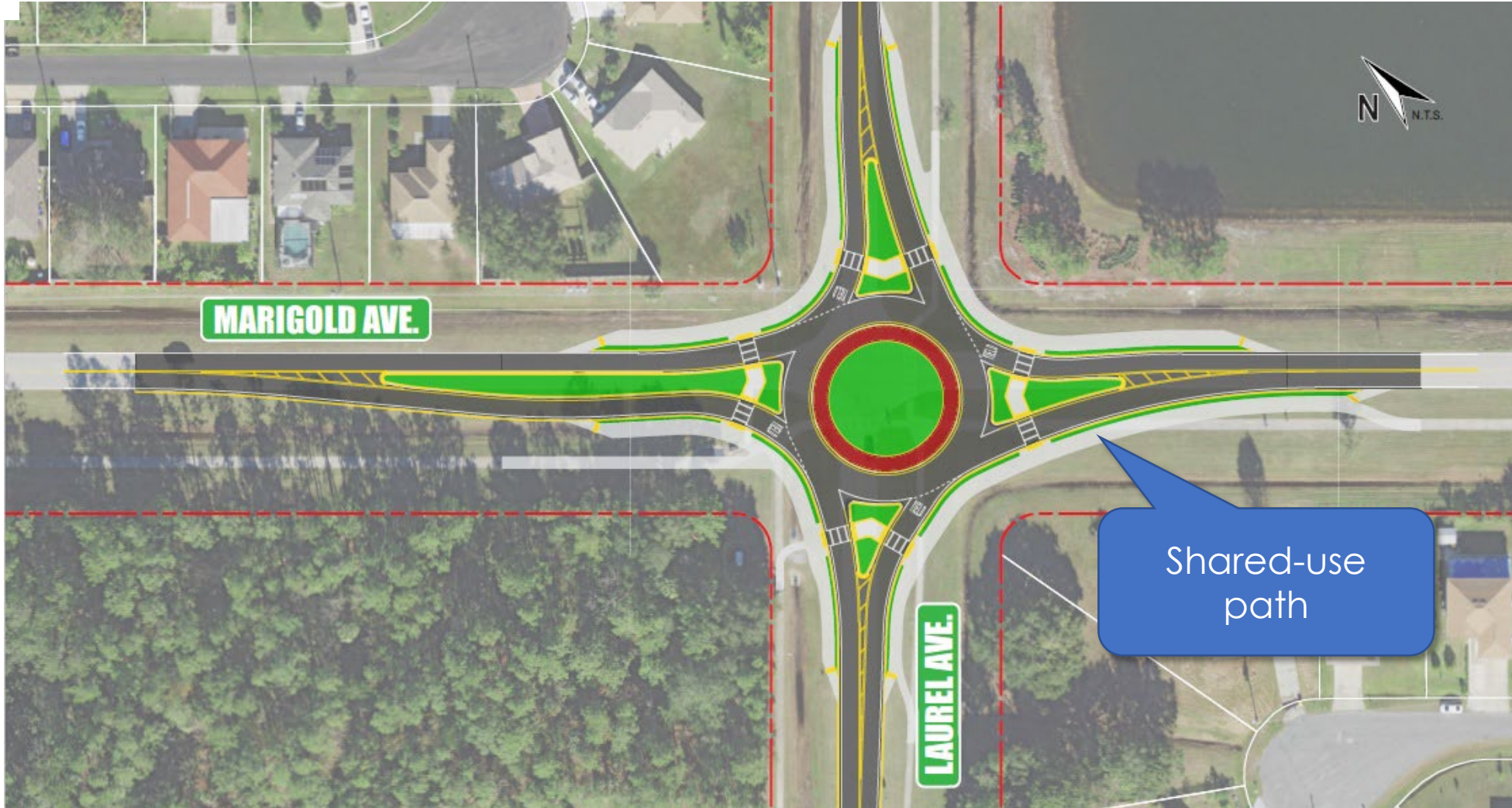


## Laurel Avenue

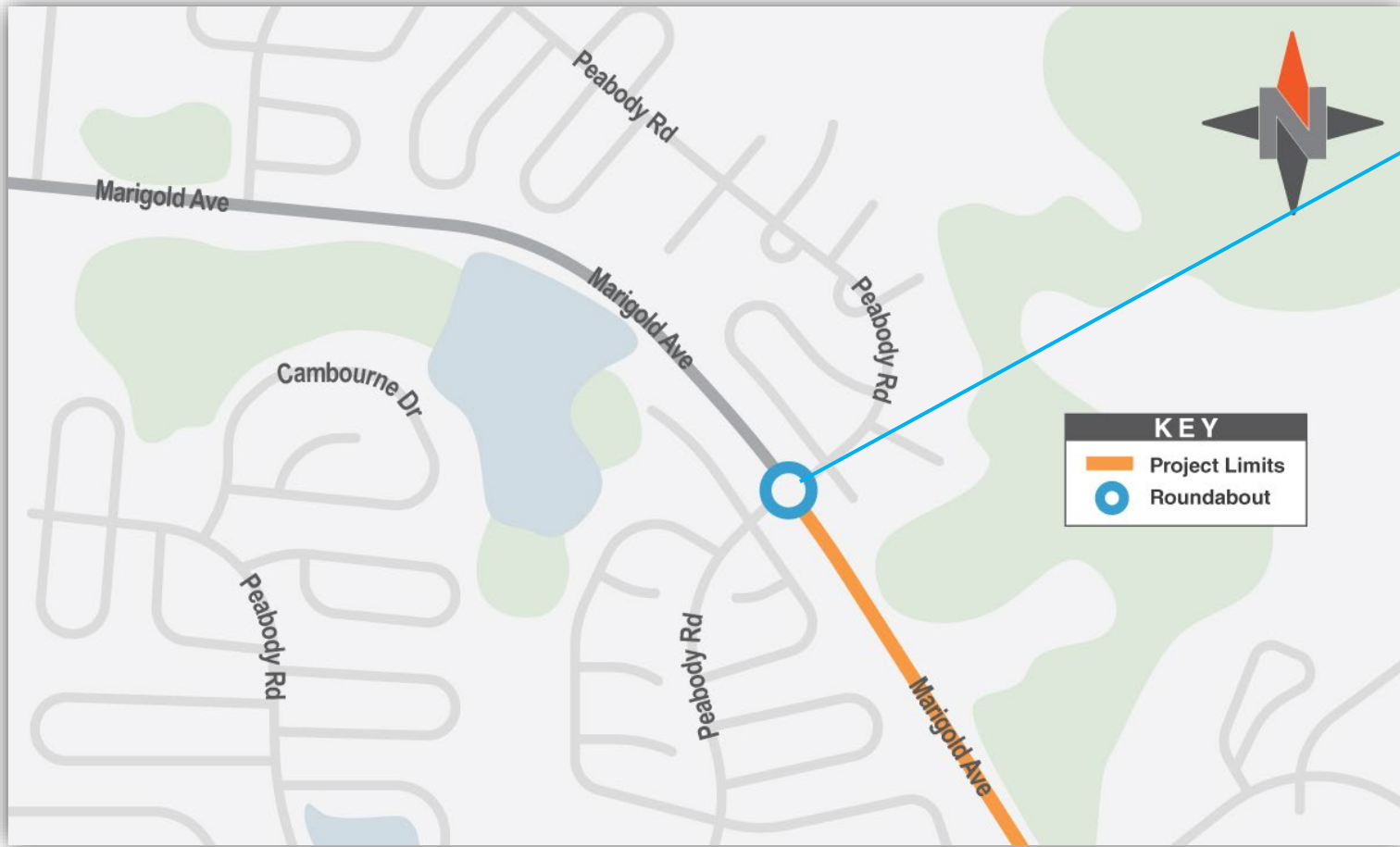




# Roundabout Locations



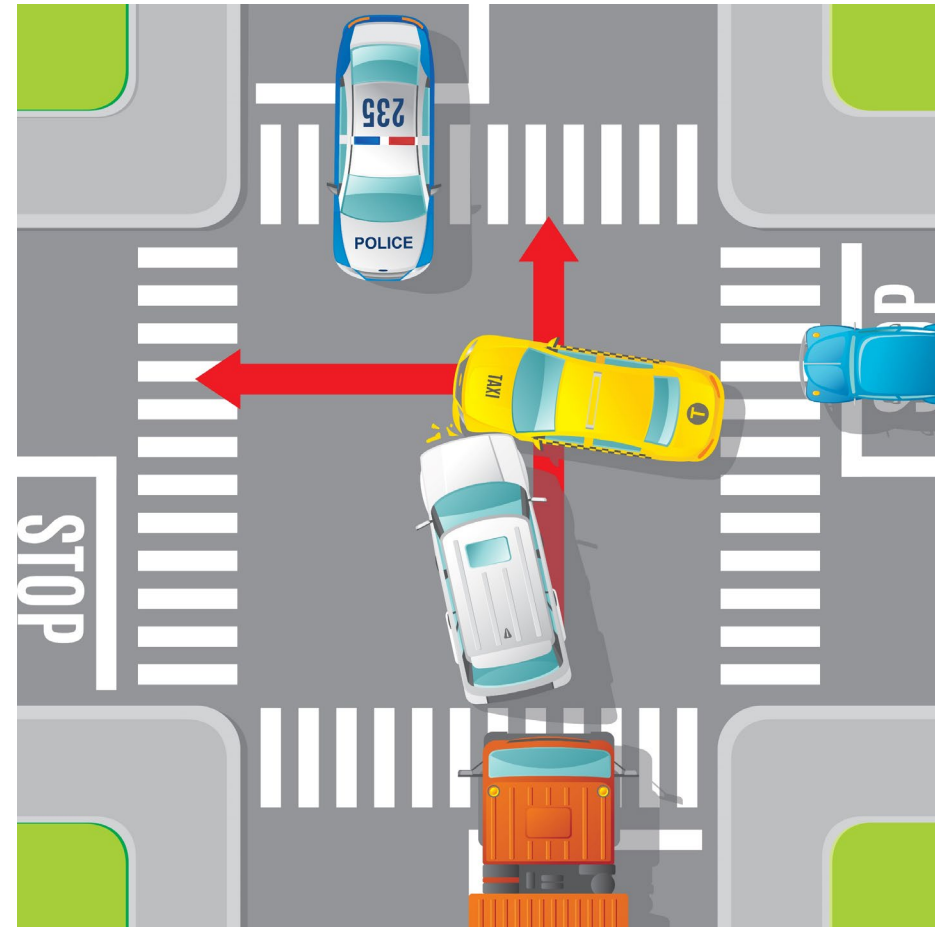
## Peabody Road

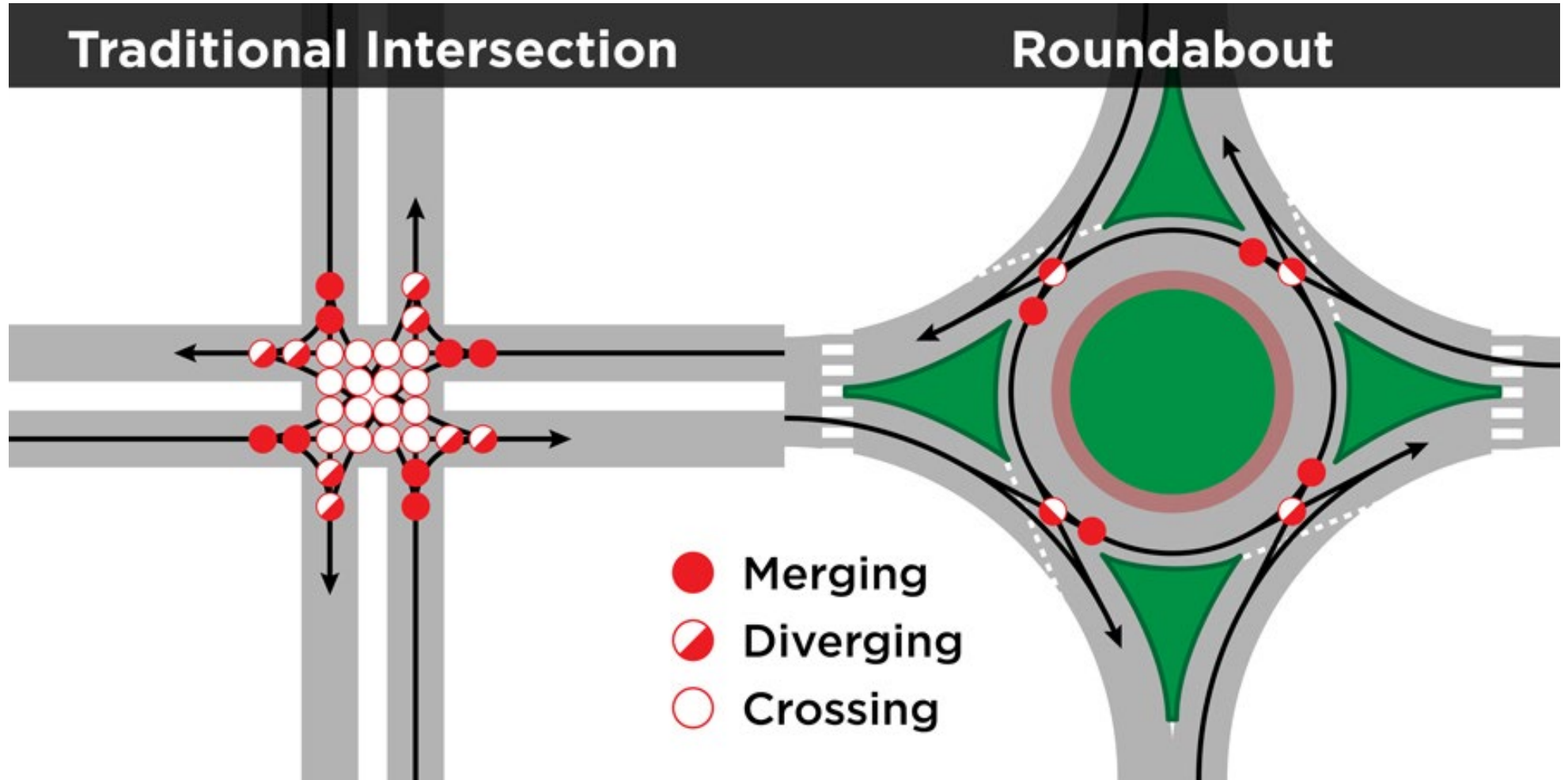


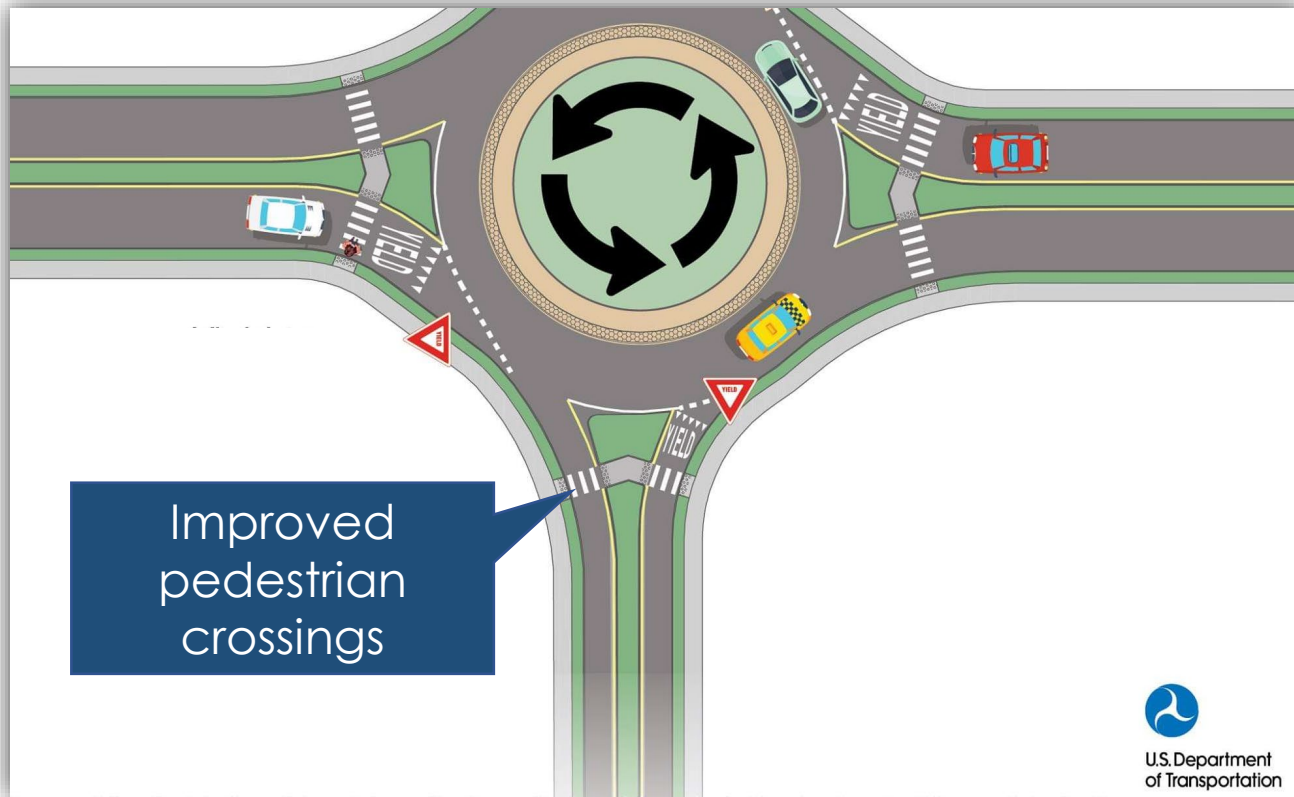
# Roundabout Locations



Roundabouts reduce the chances for the most serious types of incidents by as much as **70%** compared with a signal-controlled intersection.







## Pedestrian safety

- Islands provide safe stopping space
- Equipped with pedestrian activated warning lights (RRFBs)

- Provides more visibility to alert drivers to pedestrian activity
- Two rapid flashing yellow lights mounted below a yellow pedestrian crossing sign
- Flashing lights remain dark until activated by a pedestrian



More information about roundabouts and how to use them is available online at:

[fdot.tips/roundabout](https://fdot.tips/roundabout)





## San Miguel Road







- Marigold Avenue will remain open during construction
- Lane closures and detours may be needed
- Coordination with Deerwood Elementary School
- Requirement for contractor to limit dust and control erosion during construction

## Design

- Completion anticipated spring 2023
- \$1.1 million

## Right of Way

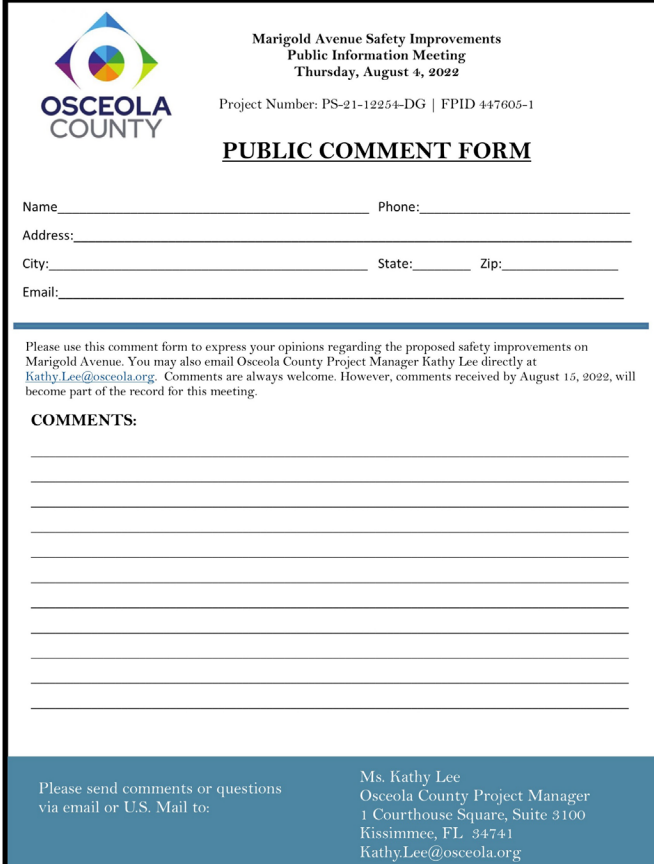
- Within existing


## Construction

- Anticipated to begin 2025
- \$4.3 million

**\*Design and construction in partnership with the Florida Department of Transportation (FDOT)**

- Speak with project team members
- Complete a comment form and drop it in the comments box
- Take a comment form with you and send it back to the address shown on the form
- Make a comment on the project website at [www.Osceola.org/go/marigoldavenue](http://www.Osceola.org/go/marigoldavenue)
- Call or email the project team directly after the meeting by phone at 407-742-0553 or email at [Kathy.Lee@osceola.org](mailto:Kathy.Lee@osceola.org)
- Please submit comments by August 15, 2022



 **OSCEOLA**  
COUNTY

Marigold Avenue Safety Improvements  
Public Information Meeting  
Thursday, August 4, 2022

Project Number: PS-21-12254-DG | FPID 447605-1

**PUBLIC COMMENT FORM**

Name: \_\_\_\_\_ Phone: \_\_\_\_\_  
Address: \_\_\_\_\_  
City: \_\_\_\_\_ State: \_\_\_\_\_ Zip: \_\_\_\_\_  
Email: \_\_\_\_\_

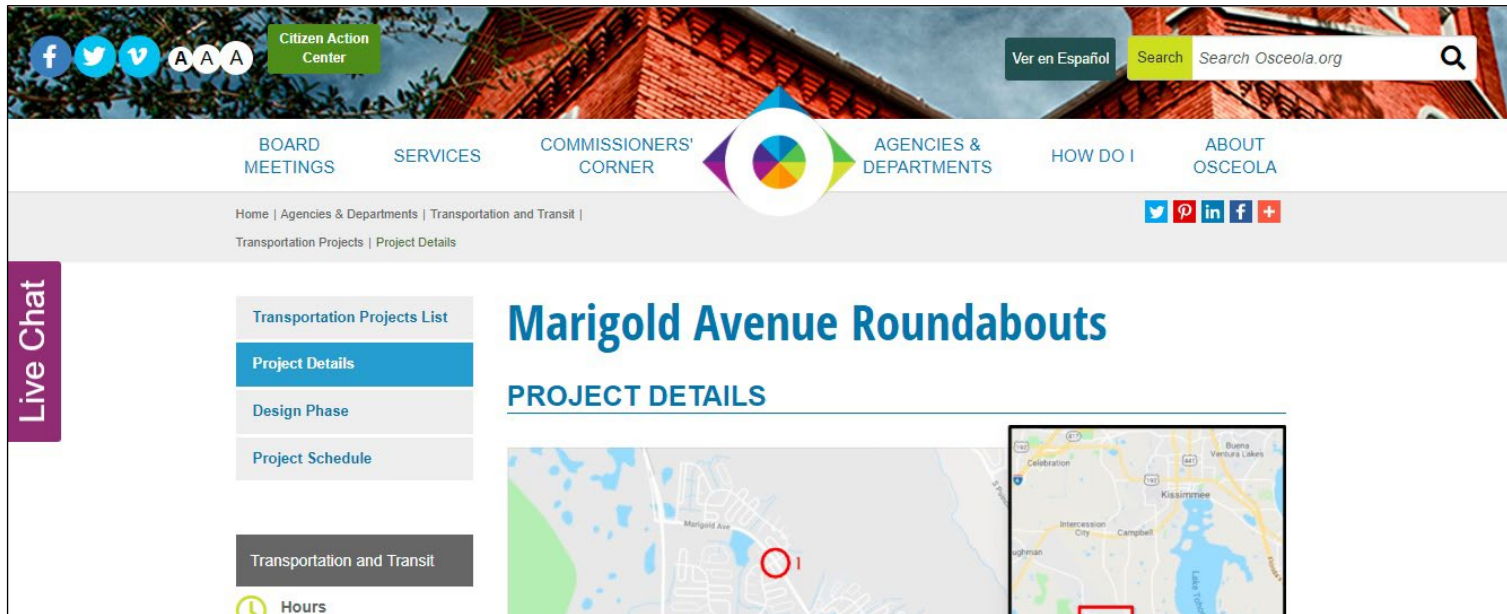
Please use this comment form to express your opinions regarding the proposed safety improvements on Marigold Avenue. You may also email Osceola County Project Manager Kathy Lee directly at [Kathy.Lee@osceola.org](mailto:Kathy.Lee@osceola.org). Comments are always welcome. However, comments received by August 15, 2022, will become part of the record for this meeting.

**COMMENTS:**

\_\_\_\_\_  
\_\_\_\_\_  
\_\_\_\_\_  
\_\_\_\_\_  
\_\_\_\_\_  
\_\_\_\_\_  
\_\_\_\_\_  
\_\_\_\_\_  
\_\_\_\_\_

Please send comments or questions via email or U.S. Mail to:

Ms. Kathy Lee  
Osceola County Project Manager  
1 Courthouse Square, Suite 3100  
Kissimmee, FL 34741  
[Kathy.Lee@osceola.org](mailto:Kathy.Lee@osceola.org)



Contact:

**Kathy Lee**  
**1 Courthouse Square**  
**Suite 3100**  
**Kissimmee, FL 34741**  
**[Kathy.Lee@osceola.org](mailto:Kathy.Lee@osceola.org)**  
**407-742-0553**

Go to the project webpage at  
[www.Osceola.org/go/marigoldavenue](http://www.Osceola.org/go/marigoldavenue)

# Thank you

*This presentation will begin again shortly*