

## WILDLIFE YOU MAY SEE



Alligator



Anhinga



Bald Eagle



Great Blue Heron



Limpkin



River Otter



Snail Kite



Tricolored Heron

## Park Rules

- **Liability** - Use caution during your activities; usage is at your own risk.
- **Access** - Park will be open from dawn to dusk except registered campers.
- **Rules & Regulations** - The following activities are prohibited on park property, except where special approval has been granted by permit from Osceola County or in specific designated areas: hunting, swimming, waste disposal, discharging firearms, fireworks, destruction of property, introduction or collection of plants or animals, feeding or disturbing wildlife, alcoholic beverages, sales or concessions and other uses not specifically referenced.
- For camping information please contact **(407) 742-0200** or for camping registration please visit: <https://apm.activecommunities.com/osceolaparks>

***For your safety and the protection of habitat, stay on the designated trails.***

All other inquires call **(407) 742-0200**  
or scan the QR code to visit our  
website at [www.osceola.org](http://www.osceola.org)

Makinson Island is located on Lake Tohopekaliga  
(Lake Toho).

Docking Coordinates:

28°14'51.94"N / 81°24'39.58"W



# Makinson Island

## Conservation Area



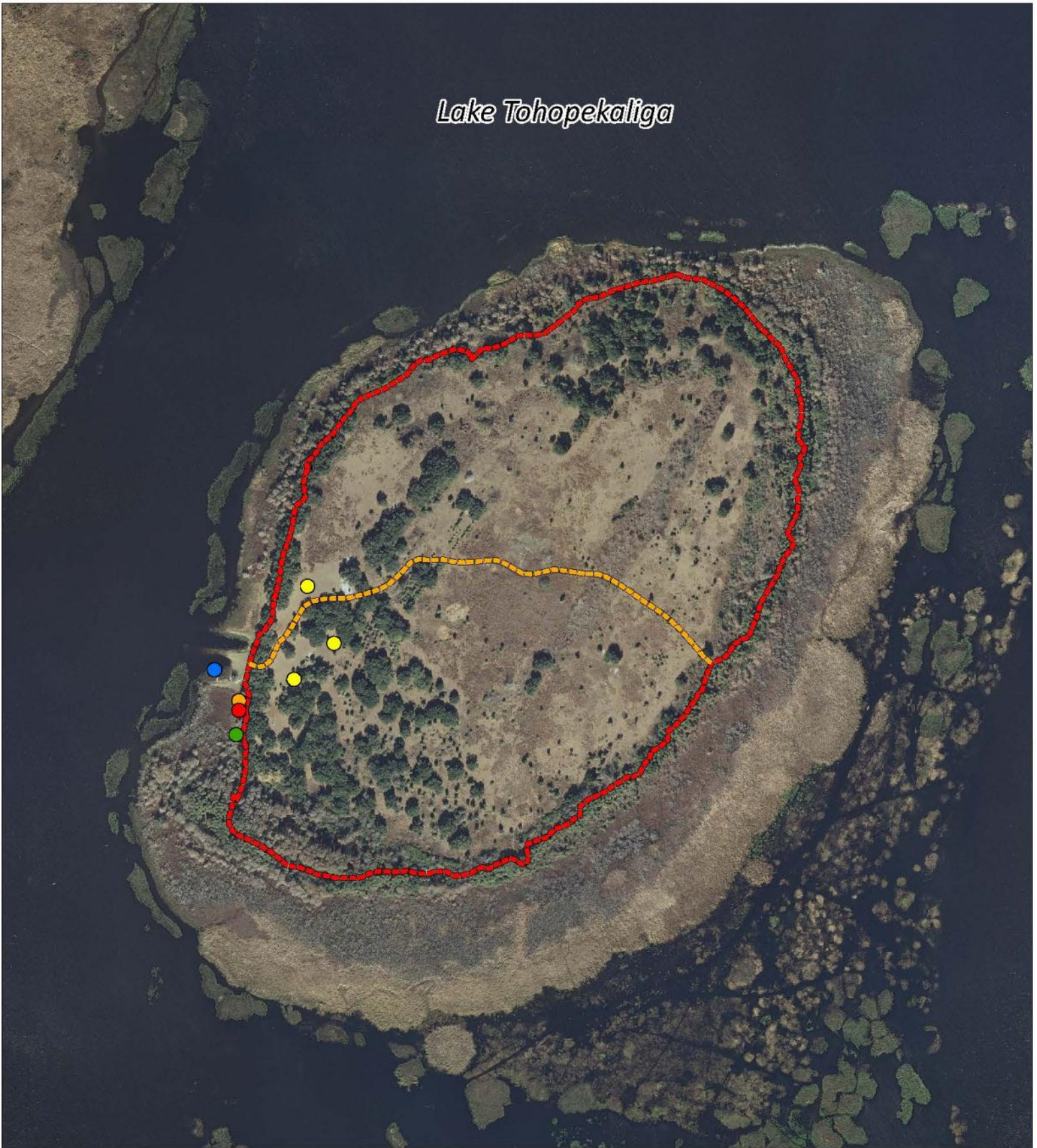
## Osceola County Parks

1 Courthouse Square • Kissimmee, FL 34741





# Lake Tohopekaliga



Osceola County  
Natural Resources

Map Produced By Osceola County  
Community Development  
Geographic Information Systems Section

0 200 400 600 800  
Feet



In Partnership with...  
Florida Fish & Wildlife  
Conservation Commission



Trust for Public Land

## Legend

--- Nature Trail

--- Cross Island Trail

● Boat Dock

● Camping Area

● Picnic Pavilion

● Trail Head

● Restroom

