

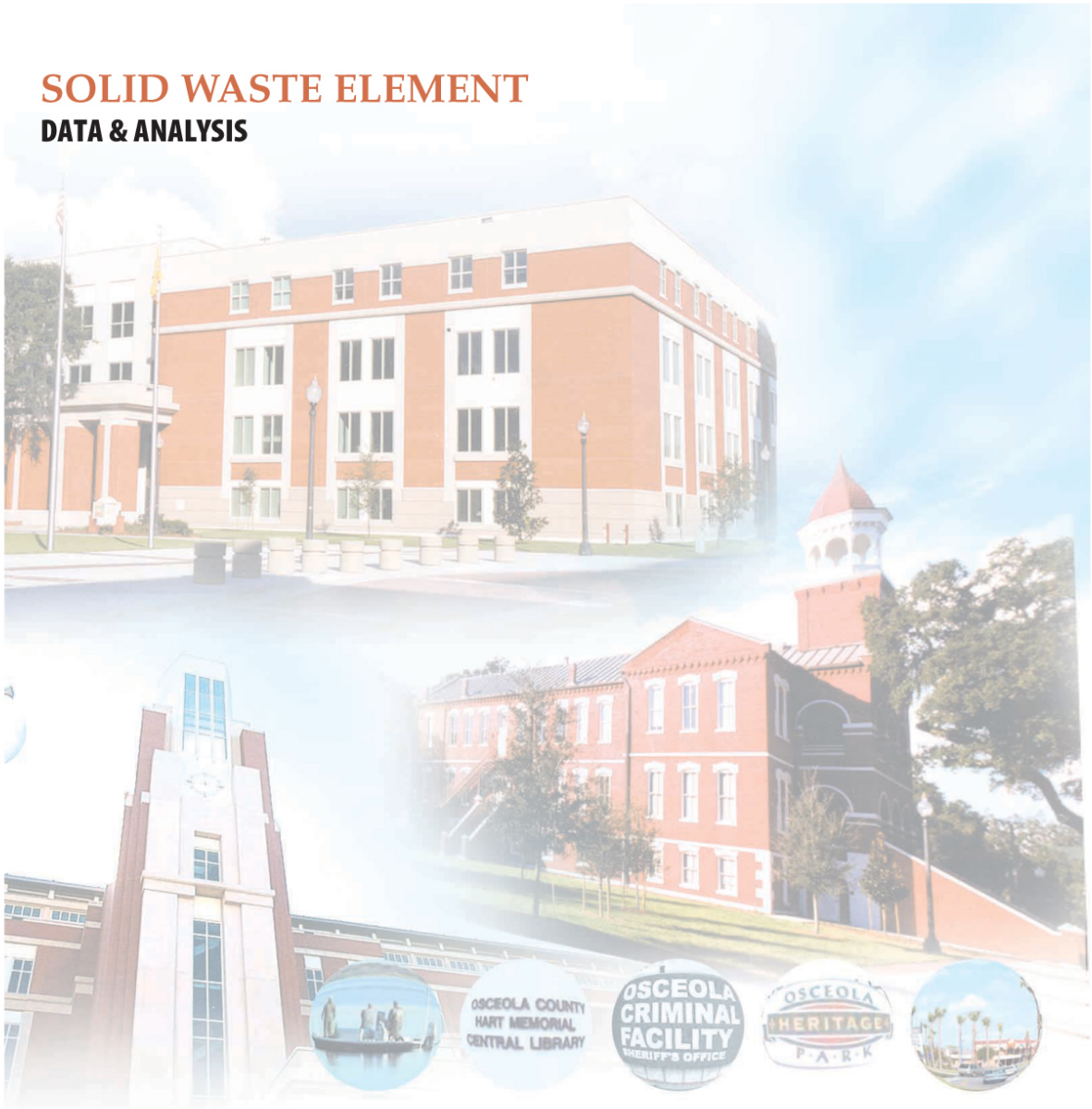
Attachment 4 – Solid Waste Element Analysis

Attachment 4B – Data and Analysis

Osceola County Comprehensive Plan

Solid Waste Element Data & Analysis

SOLID WASTE ELEMENT DATA & ANALYSIS



OSCEOLA COUNTY COMPREHENSIVE PLAN 2025

Prepared By:

Osceola County Planning Department
1 Courthouse Square
Kissimmee, FL 34741

TABLE OF CONTENTS

A. INTRODUCTION..... 4

B. OSCEOLA COUNTY SOLID WASTE FACILITIES INVENTORY 4

1. Operational Responsibility..... 5

2. Service Area and Predominant Users 5

3. Solid Waste Facility Design and Capacity..... 5

 a. Southport Road MSW Landfill..... 5

 b. Bass Road Landfill..... 6

 c. St. Cloud Transfer Station..... 6

4. Solid Waste Collection Services 6

 a. City of Kissimmee 6

 b. City of St. Cloud 7

 c. Northern Osceola County 7

 d. Kenansville (Rural)..... 7

5. Recycling Programs 7

6. Household Chemical Wastes 8

C. SOLID WASTE FACILITY NEEDS ANALYSIS 9

1. Level of Service Standards 9

2. Solid Waste Facilities 9

 a. Southport Road Landfill 9

 b. Bass Road Landfill..... 10

 c. St. Cloud Landfill..... 10

 d. J.E.D. Solid Waste Facility 10

3. Solid Waste Collection Services 10

4. Recycling Program..... 10

5. Household Chemical Wastes 11

6. Solid Waste Facility Replacement, Expansion and New Facility Siting 11

D. CONCLUSION 11

Table 4-1: Osceola County Landfill Historical Residential Tonnages: 12

Table 4-2: Recycling Drop Off Stations 13

Map 4-1 Solid Waste Facilities Countywide 14

Map 4-2 Curbside Service Area Map 15

CHAPTER FOUR

SOLID WASTE ELEMENT (Section 163.3177(6)(c), F.S., & Rule 9J-5.011(2) F.A.C)

A. INTRODUCTION

The collection and disposal of solid waste is necessary for the protection of public health, safety and welfare. In 1976, the federal government passed the Resource and Recovery Act, which empowered the Environmental Protection Agency (EPA) to regulate hazardous waste and develop minimum standards for landfilling solid waste. In 1980, Congress passed additional legislation, which empowered the EPA to directly respond to chemical spills or the release of hazardous substances.

Also in 1980, the state of Florida passed the Florida Resource Recovery and Management Act. This Act established hazardous waste definitions, established a permitting system, required monitoring, and provided funds for clean up efforts. In 1988, the Florida Solid Waste Management Act was established. The Act required recycling programs and a reduction of the solid waste stream, as well as banning disposal of specified items in landfills.

Presently, Osceola County provides solid waste collection and disposal for all County residents. In addition, the County provides collection, storage and proper disposal of household chemical waste materials. This element details the existing facilities servicing Osceola County and provides analysis and recommendations for future solid waste collection and disposal.

B. OSCEOLA COUNTY SOLID WASTE FACILITIES INVENTORY

Within the Osceola County boundary there are three active disposal facilities operating as permitted by the Florida Department of Environmental Protection (FDEP). The first facility is the permitted Bass Road yard waste disposal site. . This facility is government owned and operated. The second facility is the J.E.D. Solid Waste Facility. The J.E.D. Solid Waste Facility is a Class I lined landfill owned by Omni Waste. The third facility is the St. Cloud Transfer Station, which is owned and operated by the City of St. Cloud. The site is located at the site of the former City of St. Cloud Landfill that closed in the fall of 2003. In addition, the County manages solid waste collection through private contract agreements within the unincorporated urbanized portions of the County and through a solid waste drop-off station located in Kenansville, Florida.

The Cities of Kissimmee and St. Cloud collect residential and commercial solid waste within their respective municipal boundaries through the use of private collection companies or as a city service. Waste from the City of Kissimmee and St. Cloud is transported to the St. Cloud Transfer Station, or the J.E.D. Solid Waste Facility and/or the Bass Road Yard Waste Disposal site

1. Operational Responsibility

The Osceola County Solid Waste and Household Chemical Collection Department (OSCWHCCD) is responsible for operation, maintenance and planning of solid waste facilities that the County wishes to own or operate within the boundary of Osceola County. The administrative office for this department is located at 750 South Bass Road. The County, through private contractors and franchises, provides for the hauling and disposal of both residential and non-residential solid waste, respectively, to disposal facilities located within Osceola County. The primary funding sources for the OCSWHCCD are Tipping Fees/Solid Waste Resource Recovery Fund, Universal Waste assessment, special host fees, and the special assessment for the Household Chemical Collection.

2. Service Area and Predominant Users

The service area for Osceola County includes all residential and non-residential users within the unincorporated County boundary. The privately owned JED facility also accepts solid waste from out-of-County sources as allowed under FDEP regulations 62-701.

Approximately 64,200 customers within unincorporated areas of the County utilize the County's curbside collection services. Residents in rural portions of Kenansville utilize the County's solid waste drop-off station.. Additional details on the County's collection services are provided within the Solid Waste Collection Services section of this element.

An estimate of total waste tonnage disposed at the County's landfills from January 2017 through September 2018 is presented in Table 4-1.

3. Solid Waste Facility Design and Capacity

Osceola County owns two landfills which are both inactive and under long term care: Southport Landfill and Bass Road Construction and Demolition Landfill.. The Bass Road Yard Waste Facility is active. Additionally, Waste Connections owns and operates the J.E.D. Solid Waste Facility, a Class I landfill. The following is a brief description of these facilities.

a. Southport Road MSW Landfill

This facility was a Class 1 MSW landfill and is located off of Southport Road at 4400 Hunt Road. The Southport Landfill ceased all operations on August 2, 2004. This landfill consisted of 257.6 acres, including 115 acres of preserved wetlands.

b. Bass Road Landfill

Bass Road Landfill was an unlined landfill that accepted C&D materials for disposal and recycling. The landfill ceased operations in 2009. The landfill consisted of approximately 174.3 acres and is situated west of the City of Kissimmee. The facility includes two closed Class 1 solid waste disposal areas, which are currently under 30-year long-term care..

The landfill accepted C&D material from Osceola County, the Cities of Kissimmee and St. Cloud, and private companies and residents in the area. The waste materials received at the landfill were from construction activities associated with all types of land use and maintenance activities from existing land uses. This facility currently accepts and processes yard waste brought to the site for disposal. Yard waste is mulched and provided free to consumers as landscaping material.

The Bass Road operations site accepts waste oil, paint or household chemical materials free of charge for all residential customers.

c. St. Cloud Transfer Station

The City of St. Cloud owns and operates the St. Cloud Transfer Station. This facility accepts MSW, yard waste and C&D material as allowed under the FDEP permit for the facility. All accepted waste is tipped on a floor and then loaded into a transfer trailer that hauls the refuse to the J.E.D. Solid Waste Facility. The St. Cloud Transfer Station replaces the previous landfill, which was closed in the fall of 2003.

4. Solid Waste Collection Services

Solid waste collection services are provided to County residents through the City of Kissimmee, the City of St. Cloud and Osceola County. Service areas for waste collection within each jurisdiction are depicted in Map 4-1 Solid Waste Facilities Countywide and Map 4-2 Curbside Service Area Map. The following is a description of the collection services provided:

a. City of Kissimmee

The City's solid waste collection services are adequate to meet the demands of the residents of the City of Kissimmee. The City, on a weekly basis, according to a route system, provides residential and commercial garbage collection service. Curbside pick-up of MSW, yard waste and single stream recycling is provided. The collected Class I waste is transported to the St. Cloud Transfer Station and will eventually be disposed of at the J.E.D. Solid Waste Facility in Holopaw.

b. City of St. Cloud

The City of St. Cloud provides automatic curbside collection of Class I waste, yard waste and single stream recyclable materials to its residential customers. Solid waste collection and recycling service is also provided for commercial customers. Collected solid waste is brought to the St. Cloud Transfer Station.

c. Northern Osceola County

The County provides contract management services to two (2) collection vendors: Waste Management, Inc., and Omni Waste which provide services to approximately 64,200 households within the unincorporated portions of northern Osceola County. In October of 1999, the County began the Universal Solid Waste Program to provide curbside collection of solid waste in the northern portion of the County.

This service includes residential collection of MSW waste once per week, single stream recycle collection once per week, and yard waste collection once per week with a maximum total of 10 bags, bundles and containers.

d. Kenansville (Rural)

The rural portion of Kenansville is serviced through the operation of a solid waste drop-off station. This drop-off site is located in Kenansville. The site provides a full time attendant and 20 and 30 cubic-yard roll off containers. This station accepts MSW, white goods, yard waste, recyclables, and household chemical waste from residents living in the surrounding areas. As with other areas of the County, waste from commercial and industrial businesses is not accepted at this site and must be collected and transferred to an appropriate facility by the individual business. Roll-off containers are emptied on an as-needed basis with the solid waste materials being transported to the J.E.D. Solid Waste Facility or the St. Cloud Transfer Station.

5. Recycling Programs

- a. Curbside Recycling: Osceola County's recycling program began in 1990. In 2012 the County implemented single stream recycling which provides for the collection of glass/plastic bottles, aluminum/tin cans, paper and cardboard for all residents in the unincorporated Osceola County that are assessed for curbside collection services. This service is provided once per week. Single stream allows for citizens to dispose of glass/plastic bottles, aluminum/tin cans, paper and cardboard and all items can go into one container that is provided to residents by the County. The County also provides 4 drop-off centers for use by the residents of Osceola County. Table 4-2 lists the name and location of these drop-off stations

- b. Waste Tires: The County accepts tires at the Bass Road Operations Site.. The tires are collected and transported on an, as-needed basis, to the JED landfill site where they are shredded and hauled off for recycling.
- c. Yard Waste: Yard waste is collected at the Bass Road Yard Waste Operations site where it is stored within its own facility. The County utilizes a private contractor that processes the yard waste by reducing it with a tub grinder to form mulch. The mulch/soil amendment is available to citizens, free of charge, for reuse. The remaining wood waste mulch is hauled off to a pre-approved disposal site.
- d. White goods are accepted at the Bass Road Landfill only. White goods are appliances, such as refrigerators, stoves, and dishwashers. All white goods must be Freon-free to be accepted at the Bass Road Operations Site.. They are banned from disposal in landfills, but are accepted in the recycling area where they are held in storage. The white goods are picked up and recycled by a scrap metal dealer.

6. Household Chemical Wastes

Household chemical wastes are substances, which are unregulated by the EPA. They include paints, stains, varnishes, cleaners, solvents, batteries, motor oil, and pesticides. These products contain chemicals that are poisonous, corrosive, or flammable and may have an adverse effect on the environment if not properly disposed. The Resource Conservation and Recovery Act (RCRA) as outlined in Chapter 40, Code of Federal Regulations (CFR), is the federal act identifying certain wastes that the EPA has specifically listed as hazardous.

Within Osceola County, the Household Chemical Collection Division of the Solid Waste Department assists the FDEP with inspections of businesses, producing hazardous waste. However, the Household Chemical Collection Division does not collect or accept hazardous waste from commercial businesses but rather assists in helping community businesses handle their toxic waste according to federal, state, and local regulations. The Household Chemical Collection Division does not function as a first responder for accidents involving hazardous wastes and does not collect chemical wastes from businesses. Presently, the Osceola County Fire Department functions as the first responder for hazardous materials incidents.

Household chemical wastes are currently accepted at the St. Cloud Transfer Station and Bass Road Landfill facilities. These drop-off facilities are maintained for the residents of both the unincorporated areas and the cities in Osceola County to provide for the proper processing and disposal of household chemical wastes. There are approximately 134,000households utilizing household chemical materials for daily private uses. In

2017, 156,000 pounds of household chemical waste were disposed of properly, according to the Household Chemical Collection Division. Chemical wastes from commercial or business operations are not accepted at these facilities.

Both facilities have the capacity to store approximately 300 gallons of waste oil and approximately 100 vehicle batteries. The waste oil and batteries are removed for recycling by private contractors on a monthly basis. The County maintains “spotters” at each facility to inspect loads for hazardous wastes.

In addition to accepting household chemical waste at the St. Cloud Transfer Station and the Bass Road facility, the County schedules waste tire Amnesty Days approximately four to six times per year at the Bass Road Operations Site.. . These days are well advertised through the county website and social media.. The quantities of household chemical waste and waste tire collected in FY 2017 were 1,000 pounds of tires and 3,000 pounds of household chemicals. The majority of this waste is related to latex and oil based paints, batteries, waste oils, wet batteries and solvents.

C. SOLID WASTE FACILITY NEEDS ANALYSIS

1. Level of Service Standards

The County has a contract with Omni Waste to reserve 30 years of guaranteed capacity at the J.E.D. Solid Waste Facility. As stated in Condition Use Plan CU 00-00035-Omni Waste, LLC, and item number 13, the guarantee applies to all Osceola County residents and is valid through the year 2034. The County will continue to monitor their level of service standards to maintain accordance with EPA standards as applicable.

2. Solid Waste Facilities

The Southport Landfill closed on August 2, 2004, the City of St. Cloud Landfill closed in the fall of 2003. The Bass Road C&D Landfill received a renewed operational permit extending service to November 2009. As such, the County initiated an alternate long-term analysis for solid waste disposal options. The result of this study, which was approved by County Commission on January 14, 2002, allowed for the restructuring of the County’s solid waste facilities operation and the construction of the privately owned and maintained facility (J.E.D. Solid Waste Facility), which at this time is capable of servicing Osceola County through 2034. The following is a description of the restructured facilities and operations:

a. Southport Road Landfill

This facility ceased operations on August 2, 2004. The site continues to be under long term care by the County’s Solid Waste Division.

b. Bass Road Landfill

The Bass Road C&D waste disposal cell was properly closed out per Department of Environmental Protection guidelines in 2009. Two previous MSW disposal cells have been closed out and now receive long-term maintenance care only.

c. St. Cloud Landfill

This facility ceased operations in the fall of 2003.

d. J.E.D. Solid Waste Facility

Osceola County has determined that the most effective and efficient method for disposal of future MSW solid waste is through a private solid waste management company. To this end, Osceola County entered into an agreement with the private company of Omni Waste to provide solid waste management services. The J.E.D. Solid Waste Facility, a MSW Class I Solid Waste Disposal Landfill is located in eastern Osceola County off of Highway 441 at 1051 Omni Way, St. Cloud Florida 32773. The construction of this facility was completed in January 2004. The J.E.D. Solid Waste Facility was constructed on a 2,250-acre parcel and disposal operations will be contained within a 195-acre portion of the overall parcel. An additional 100 acres is reserved for supporting facilities and required buffer areas. The maximum landfill height has been limited to 330 feet. Hazardous waste materials will not be accepted at this facility.

3. Solid Waste Collection Services

Despite the changes and restructuring of the Osceola Solid Waste operations, the solid waste collection services will remain relatively unchanged. Residential and commercial collection of solid waste will continue to be provided by the Cities Kissimmee and St. Cloud. Additionally, Osceola County will continue to provide collection services within the unincorporated portions of the County and the Kenansville drop-off stations. The collection routes will remain unchanged with the municipal solid waste being transferred from approved transfer stations to the J.E.D. Solid Waste Facility for final disposal. C&D materials may be delivered to the St. Cloud Transfer Station, the J.E.D. Landfill facility or out of county sites. Commercial and residential yard waste may be delivered to the Bass Road Operations site.

4. Recycling Program

Osceola County will continue to provide recycling services to the public. The County will contract for the collection and processing of recyclables with a private vendor. Although the vendor may change, the same recycling materials will continue to be

accepted. Displays will be provided to demonstrate the process and aid in marketing recycled products to commercial vendors.

5. Household Chemical Wastes

Household chemical waste is currently accepted at the Bass Road landfill and the St. Cloud transfer site.

6. Solid Waste Facility Replacement, Expansion and New Facility Siting

As previously stated, Osceola County's solid waste disposal operations have not undergone significant changes. With the closing of the Southport Road Landfill, the County entered into a private contract for disposal of solid waste at the J.E.D. Solid Waste Facility, owned and operated by Omni Waste.

D. CONCLUSION

Following the trend of privatization in governmental operations, the County has chosen to contract its solid waste disposal operations to a private company. Thus, in the future, the County's role will be to coordinate with this private company by providing population projections and other relevant data to ensure adequate future capacity in its landfill. Additionally, as the Cities of Kissimmee and St. Cloud grow in population, and the municipalities annex and expand services to unincorporated areas, additional coordination will be required.

Table 4-1: Osceola County Landfill Historical Residential Tonnages:

2017

Month	Solid Waste/Bulk Waste	Recyclables/White Goods	Yard Waste
January	4855.21	1636.72	605.8
February	4070.64	1328.07	698.49
March	4764.92	1504.59	896.49
April	4211.69	1368.36	844.51
May	4623.68	1508.04	906.03
June	5244.86	1609.04	897.38
July	4905.07	1539.86	858.7
August	4886.59	1541.32	1060.82
September	4286.52	1280.17	1376.23
October	4804.07	1520.94	954.03
November	4701.24	1525.55	898.88
December	4296.1	1528.12	484.43
TOTAL	55650.59	17890.78	10481.79

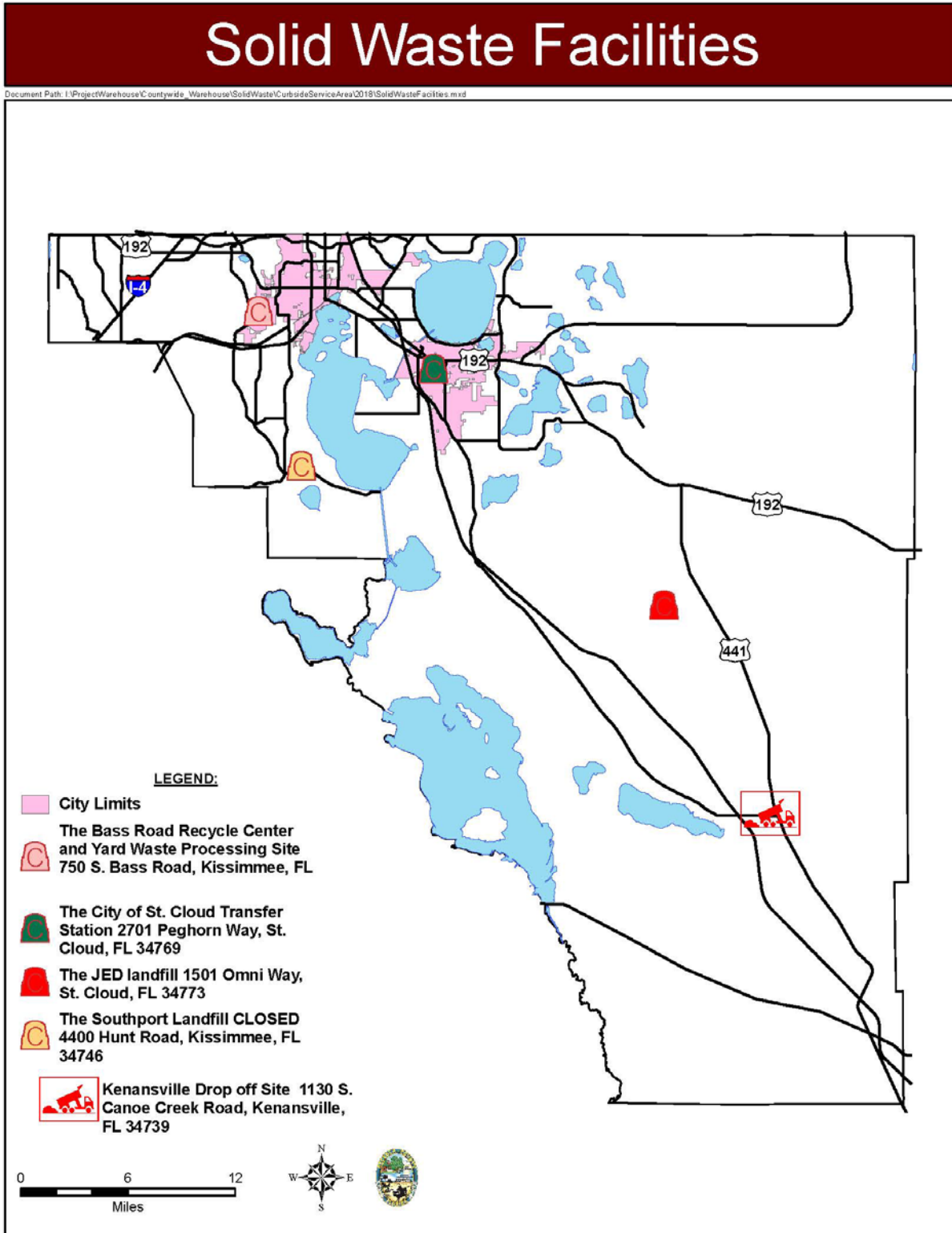
2018

Month	Solid Waste/Bulk Waste	Recyclables/White Goods	Yard Waste
January	4942.38	1790.82	645.7
February	4256.43	1448.02	886.43
March	4828.21	1874.14	933.47
April	4702.97	1586.46	881.39
May	5007.19	1734.18	964.97
June	4885.1	1660.22	911.61
July	N/A	N/A	N/A
August	N/A	N/A	N/A
September	N/A	N/A	N/A
TOTAL	28622.28	10093.84	5223.57

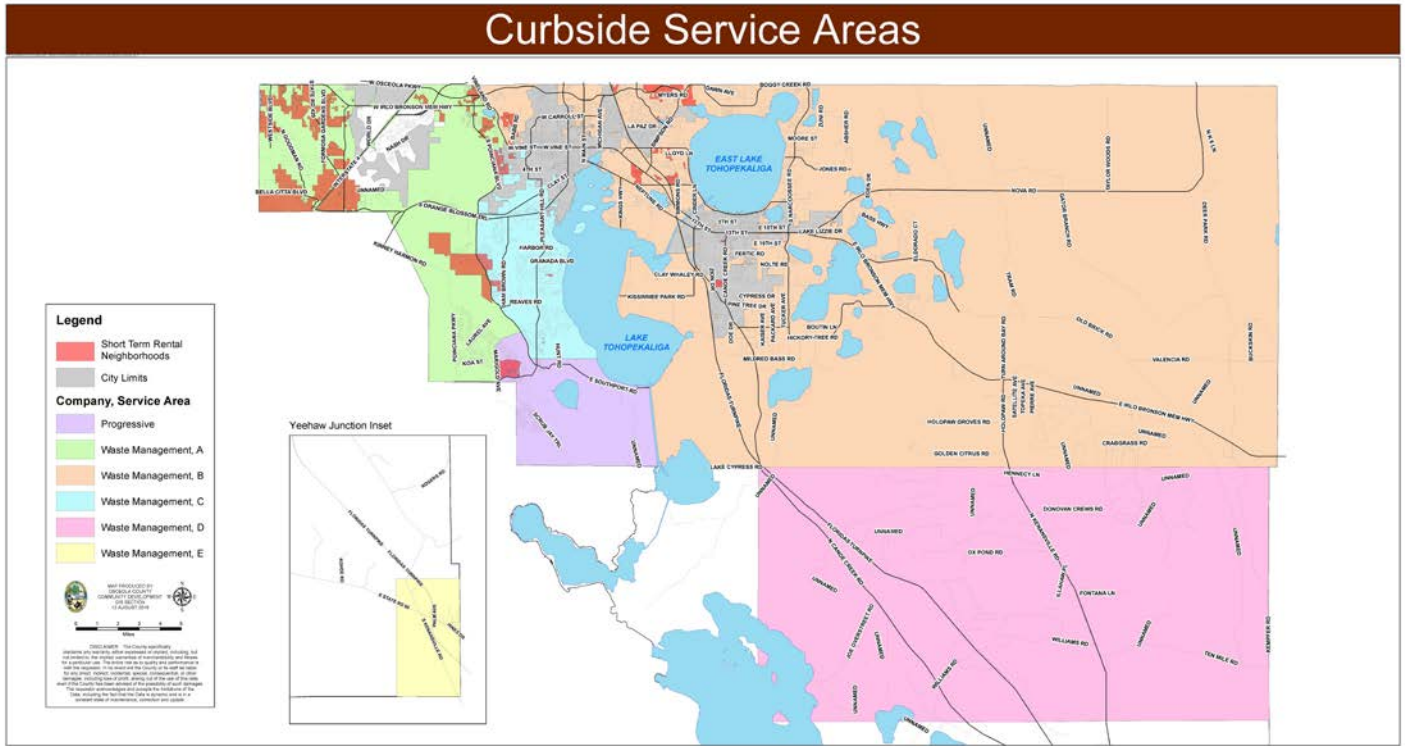
Table 4-2: Recycling Drop Off Stations

Drop Off Station Name	Station Location
Bass Road Recycling Center	750 S. Bass Road, Kissimmee
Holy Redeemer Church	Thacker Avenue, Kissimmee
St. Cloud Transfer Station	17 th Street, St. Cloud
Kenansville Drop-off Station	Kenansville

Map 4-1 Solid Waste Facilities Countywide



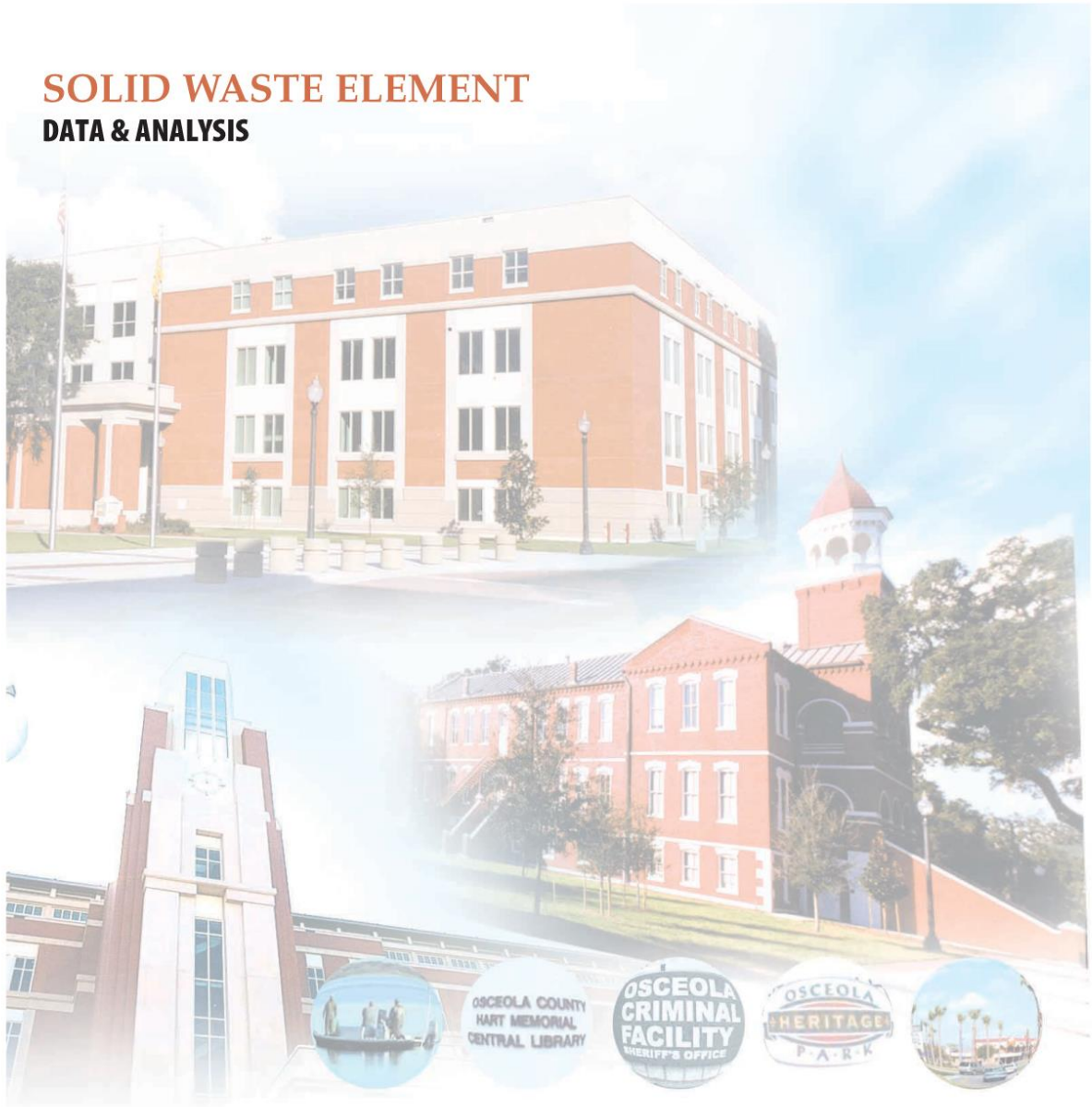
Map 4-2 Curbside Service Area Map



Osceola County Comprehensive Plan

Solid Waste Element
Data & Analysis

SOLID WASTE ELEMENT DATA & ANALYSIS



OSCEOLA COUNTY COMPREHENSIVE PLAN 2025

Prepared By:

Osceola County Planning Department
1 Courthouse Square
Kissimmee, FL 34741

TABLE OF CONTENTS

A. INTRODUCTION..... 5

B. OSCEOLA COUNTY SOLID WASTE FACILITIES INVENTORY 5

1. Operational Responsibility..... 6

2. Service Area and Predominant Users 6

3. Solid Waste Facility Design and Capacity..... 6

 a. Southport Road MSW Landfill..... 6

 b. Bass Road Landfill..... 7

 c. St. Cloud Transfer Station..... 7

4. Solid Waste Collection Services 7

 a. City of Kissimmee 8

 b. City of St. Cloud 8

 c. Northern Osceola County 8

 d. Kenansville (Rural)..... 8

5. Recycling Programs 9

6. Household Chemical Wastes 10

C. SOLID WASTE FACILITY NEEDS ANALYSIS 11

1. Level of Service Standards 11

2. Solid Waste Facilities 11

 a. Southport Road Landfill 12

 b. Bass Road Landfill..... 12

 c. St. Cloud Landfill..... 12

 d. J.E.D. Solid Waste Facility 12

3. Solid Waste Collection Services..... 13

4. Recycling Program..... 13

5. Household Chemical Wastes 13

6. Solid Waste Facility Replacement, Expansion and New Facility Siting 13

D. CONCLUSION 14

Table 4-1: Osceola County Landfill Historical Residential Tonnages: 15

Table 4-2: Recycling Drop Off Stations 17

Map 4-2 Curbside Service Area Map 20

~~**A. INTRODUCTION..... 3**~~

~~**B. OSCEOLA COUNTY SOLID WASTE FACILITIES INVENTORY 3**~~

~~1. Operational Responsibility..... 4~~

~~2. Service Area and Predominant Users 4~~

~~3. Solid Waste Facility Design and Capacity..... 4~~

~~a. Southport Road MSW Landfill..... 4~~

~~b. Bass Road Landfill..... 4~~

~~e. St. Cloud Landfill..... 5~~

~~4. Solid Waste Collection Services..... 5~~

a. City of Kissimmee 5
b. City of St. Cloud 6
c. Northern Osceola County 6
d. Southern Osceola County 6
5. Recycling Program 6
6. Household Chemical Wastes 7
C. SOLID WASTE FACILITY NEEDS ANALYSIS 8
1. Level of Service Standards 8
2. Solid Waste Facilities 9
a. Southport Road Landfill 9
b. Bass Road Landfill 9
c. St. Cloud Landfill 9
d. Future Demand Capacity 9
3. Solid Waste Collection Services 10
4. Recycling Program 10
5. Household Chemical Wastes 10
6. Solid Waste Facility Replacement, Expansion and New Facility Siting 10
D. CONCLUSION 11

CHAPTER FOUR

SOLID WASTE ELEMENT (Section 163.3177(6)(c), F.S., & Rule 9J-5.011(2) F.A.C)

A. INTRODUCTION

The collection and disposal of solid waste is necessary for the protection of public health, safety and welfare. In 1976, the federal government passed the Resource and Recovery Act, which empowered the Environmental Protection Agency (EPA) to regulate hazardous waste and develop minimum standards for landfilling solid waste. In 1980, Congress passed additional legislation, which empowered the EPA to directly respond to chemical spills or the release of hazardous substances.

Also in 1980, the state of Florida passed the Florida Resource Recovery and Management Act. This Act established hazardous waste definitions, established a permitting system, required monitoring, and provided funds for clean up efforts. In 1988, the Florida Solid Waste Management Act was established. The Act required recycling programs and a reduction of the solid waste stream, as well as banning disposal of specified items in landfills.

Presently, Osceola County provides solid waste collection and disposal for all County residents. In addition, the County provides collection, storage and proper disposal of household chemical waste materials. This element details the existing facilities servicing Osceola County and provides analysis and recommendations for future solid waste collection and disposal.

B. OSCEOLA COUNTY SOLID WASTE FACILITIES INVENTORY

Within the Osceola County boundary there are three active disposal facilities operating as permitted by the Florida Department of Environmental Protection (FDEP). The first facility is the permitted Bass Road yard waste disposal site. ~~Construction and Demolition (C&D) Landfill.~~ This facility is government owned and operated. ~~The two other facilities are privately owned and operated and include the second facility is the J.E.D. Solid Waste Facility, and the St. Cloud Transfer Station.~~ The J.E.D. Solid Waste Facility is a Class I lined landfill owned by Omni WasteCapital Environmental. ~~The third facility is the St. Cloud Transfer Station, which is owned and operated by the City of St. Cloud. The site is located Omni Waste and is located at the site of the former City of St. Cloud Landfill that closed in the fall of 2003. In addition, the County manages solid waste collection through private contract franchise agreements within the unincorporated urbanized portions of the County and through a solid waste drop-off stations located within Kenansville, Florida, the rural unincorporated areas.~~

The Cities of Kissimmee and St. Cloud collect residential and commercial solid waste within their respective municipal boundaries through the use of private collection companies or as a city service. Waste from the City of Kissimmee and St. Cloud is transported to the St. Cloud Transfer Station, ~~Bass Road Landfill~~ or the J.E.D. Solid Waste Facility and/or the Bass Road Yard Waste Disposal site.

1. Operational Responsibility

The Osceola County Solid Waste and Household Chemical Collection Department (OSWHCCD) is responsible for operation, maintenance and planning of solid waste facilities that the County wishes to own or operate within the boundary of Osceola County. The administrative office for this department is located at 750 South Bass Road. The County, through private contractors and franchises, provides for the hauling and disposal of both residential and non-residential solid waste, respectively, to disposal facilities located within Osceola County. The primary funding sources for the OCSWHCCD are Tipping Fees/Solid Waste Resource Recovery Fund, Universal Waste assessment, special host fees, and the special assessment for the Household Chemical Collection ~~Department~~.

2. Service Area and Predominant Users

The service area for Osceola County includes all residential and non-residential users within the unincorporated County boundary. The privately owned JED County's landfill facilities ~~also accept~~ solid waste from out-of-County sources as allowed under FDEP regulations 62-701.

Approximately ~~64,200~~47,300 customers within unincorporated areas of the County utilize the County's curbside refuse collection services. Residents in rural portions of Kenansville ~~The remaining residents within the County's unincorporated areas~~ utilize the County's ~~two~~ solid waste drop-off stations located in Kenansville and Yeehaw Junction areas. ~~These residents also utilize the J.E.D. Solid Waste Facility.~~ Additional details on the County's collection services are provided within the Solid Waste Collection Services section of this element.

An estimate of total waste tonnage disposed at the County's landfills from ~~October 2002~~January 2002 through September 2003~~18~~ is presented in Table 4-1.

3. Solid Waste Facility Design and Capacity

Osceola County owns two landfills which are both inactive and under long term care: Southport Landfill and Bass Road Construction and Demolition Landfill, ~~with only one being active~~. The Bass Road Yard Waste Facility Landfill is active, ~~and recently received its renewal permit to operate until November 2009.~~ Additionally, Waste Connections Omni Waste LLC owns and operates the J.E.D. Solid Waste Facility, a Class I landfill. The following is a brief description of these facilities.

a. Southport Road MSW Landfill

This facility was a Class 1 MSW landfill and is located off of Southport Road at

4400 Hunt Road. The Southport Landfill ceased all operations on August 2, 2004. This landfill consisted of 257.6 acres, including 115 acres of preserved wetlands.

b. Bass Road Landfill

Bass Road Landfill ~~was is an~~ unlined landfill that ~~accepted~~ C&D materials for disposal and recycling. ~~The landfill operates under FDEP permit SO49-0128515-005, which expires in November 2009.~~ The landfill ~~ceased operations in 2009.~~ The landfill ~~consisted~~ of approximately 174.3 acres and is situated west of the City of Kissimmee. The facility includes two closed Class 1 solid waste disposal areas, which are ~~currently under programmed for 30-year long-term care, after closure of the total facility.~~ Associated with the long term care and monitoring, the County has just recently completed the permitting and construction of its new monitoring facilities.

The landfill ~~accepted~~ C&D material from Osceola County, the Cities of Kissimmee and St. Cloud, and private companies and residents in the area. ~~The waste materials that are received at the landfill are were~~ from construction activities associated with all types of land use and maintenance activities from existing land uses. This facility ~~currently also~~ accepts and processes yard waste brought to the ~~site landfill~~ for disposal. Yard waste is mulched and provided free to consumers as landscaping material.

The Bass Road ~~operations site Landfill facility~~ accepts waste oil, paint or household chemical materials free of charge for all residential customers. ~~The OCSWHCCD provides "Amnesty Days" to encourage the proper disposal of household chemical waste.~~

c. St. Cloud Transfer Station

~~The City of St. Cloud Omni Waste, LLC owns and operates the St. Cloud Transfer Station through an agreement with the City of St. Cloud.~~ This facility accepts MSW, yard waste and C&D material as allowed under the FDEP permit for the facility. All accepted waste is tipped on a floor and then loaded into a transfer trailer that hauls the refuse to the J.E.D. Solid Waste Facility. The St. Cloud Transfer Station replaces the previous landfill, which was closed in the fall of 2003.

4. Solid Waste Collection Services

Solid waste collection services are provided to County residents through the City of Kissimmee, the City of St. Cloud and Osceola County. Service areas for waste collection

within each jurisdiction are depicted in Map 4-12 Solid Waste Facilities Countywide and Map 4-2 Curbside Service Area Map. The following is a description of the collection services provided:

a. **City of Kissimmee**

The City's solid waste collection services are adequate to meet the demands of the residents of the City of Kissimmee. The City, on a weekly basis, according to a route system, provides residential and commercial garbage collection service. Curbside pick-up of ~~MSW-MSW, and~~ yard waste and single stream recycling is provided. ~~However, curbside pick up of recyclable waste is not provided. The City's adopted level of service standard for solid waste is 5.1 pounds per capita per day. The collected Class I waste is transported to the St. Cloud Transfer Station and will eventually be disposed of at the J.E.D. Solid Waste Facility Oak Hammock Landfill in Holopaw.~~

b. **City of St. Cloud**

The City of St. Cloud provides ~~automatic manual~~ curbside collection of Class I waste, yard waste and single stream recyclable materials to its residential customers. Solid waste collection and recycling service is ~~not also~~ provided for commercial customers ~~with the exception of cardboard recycling, which is provided.~~ Collected solid waste is brought to the St. Cloud Transfer Station, ~~which is currently operated and managed through the contract agreement with Omni Waste, LLC.~~

c. **Northern Osceola County**

The County provides contract management services to two (2) collection vendors; Waste Management, Inc., and Omni Waste ~~which provide services to approximately 64,200 47,300~~ households within the unincorporated portions of northern Osceola County. In October of 1999, the County began the Universal Solid Waste Program to provide curbside collection of solid waste in the northern portion of the County.

This service includes ~~d~~ residential collection of MSW waste once twice per week, ~~and~~ single stream recycle collection once per week, and yard waste collection once per week with a maximum total of 10 bags, bundles and containers. three cubic yards per collection. ~~The collection of the waste materials is performed through two private contracted companies: Bert's Waste and Waste Management, Incorporated.~~

d. **Kenansville (Rural) Southern Osceola County**

The ~~rural southern~~ portions of ~~Kenansville the County are is~~ serviced through the operation of ~~at two~~ solid waste drop-off stations. ~~Thiese two drop-off site stations~~ ~~is are~~ located in Kenansville and Yeehaw Junction. ~~The sitestations provides a~~ full time attendants and 20 and 30 cubic-yard roll off containers. ~~Thiese~~ stations ~~acceptseollect~~—MSW, white goods, yard waste, recyclables, and household chemical waste from residents living in the surrounding areas. As with other areas of the County, waste from commercial and industrial businesses is not accepted at ~~this siteese stations~~ and must be collected and transferred to an appropriate facility by the individual business. Roll-off containers are emptied on an as-needed basis with the solid waste materials being transported to the J.E.D. Solid Waste Facility or the St. Cloud Transfer Station.

5. Recycling Programs

- a. Curbside Recycling: Osceola County's recycling program began in 1990. In 2012 the County implemented single stream recycling which provides for the collection of glass/plastic bottles, aluminum/tin cans, paper and cardboard for all residents in the unincorporated Osceola County that are assessed for curbside collection services. This service is provided once per week. Single stream allows for citizens to dispose of glass/plastic bottles, aluminum/tin cans, paper and cardboard and all items can go into one container that is provided to residents by the County. The County also provides 4 drop-off centers for use by the residents of Osceola County with funding approved by the Board of County Commissioners. The funding was obtained from landfill tipping fees and state Recycling Grants. The County provides fourteen 14 major drop-off centers for use by the residents of Osceola County. Table 4-2 lists the name and location of these drop-off stations. In addition, the County operates 27 public/private drop-off sites where residents may drop off various Class I recyclables. The major drop-off stations and drop-off sites accept newspaper, plastics (milk jugs, water jugs, soda bottles, and detergent bottles), glass (clear, green, and brown), and aluminum, steel, and tin cans.

~~Osceola County's recycling efforts are operated through the Recycling Division, which works with private, public and non-profit organizations to encourage recycling efforts.~~

- b. Waste Tires: ~~Additionally, the~~The County accepts, stores, and recycles ~~100 percent of the tires received at the Bass Road Operations Site. Landfill.~~ The tires are collected and transported on an, as-needed basis, to the JED landfill site where they are shredded and hauled off for recycling.~~removed from the landfill on an as needed basis by a contracted permitted facility.~~
- c. Yard Waste: Yard waste trash is collected at the Bass Road Yard Waste Operations site landfill where it is stored within its own facility. ~~for disposal by a private contractor. The yard waste is processed at the landfill. It is stored within~~

~~its own facility at the landfill where it is run through a tub grinder to form mulch. This mulch is free to residents. The County utilizes a private contractor that processes the yard waste by reducing it with a tub grinder to form mulch. The mulch/soil amendment is available to citizens, free of charge, for reuse. The remaining wood waste mulch is hauled off to a pre-approved disposal site.~~

- d. White goods are accepted at the Bass Road Landfill only. White goods are appliances, such as refrigerators, stoves, and dishwashers. All white goods must be Freon-free to be accepted at the Bass Road Operations Site. ~~landfill~~. They are banned from disposal ~~within the landfills~~, but are accepted in the recycling area where they are held in storage. ~~On an as-needed basis, the~~ The white goods are picked up and recycled by a scrap metal dealer.

6. Household Chemical Wastes

Household chemical wastes are substances, which are unregulated by the EPA. They include paints, stains, varnishes, cleaners, solvents, batteries, motor oil, and pesticides. These products contain chemicals that are poisonous, corrosive, or flammable and may have an adverse effect on the environment if not properly disposed. The Resource Conservation and Recovery Act (RCRA) as outlined in Chapter 40, Code of Federal Regulations (CFR), is the federal act identifying certain wastes that the EPA has specifically listed as hazardous.

Within Osceola County, the Household Chemical Collection Division of the Solid Waste Department assists the FDEP with inspections of businesses, producing hazardous waste. However, the Household Chemical Collection Division does not collect or accept hazardous waste from commercial businesses but rather assists in helping community businesses handle their toxic waste according to federal, state, and local regulations. The Household Chemical Collection Division does not function as a first responder for accidents involving hazardous wastes and does not collect chemical wastes from businesses. Presently, the Osceola County Fire Department functions as the first responder for hazardous materials incidents, ~~but Orange County provides “HazMat” services to the County in the event of a hazardous materials accident or spill.~~

Household chemical wastes are currently accepted at the St. Cloud Transfer Station and Bass Road Landfill facilities. These drop-off facilities are maintained for the residents of both the unincorporated areas and the cities in Osceola County to provide for the proper processing and disposal of household chemical wastes. There are approximately ~~134,000~~60,139 households utilizing household chemical materials for daily private uses. In ~~2017~~2014, ~~156,000~~185,000 pounds of household chemical waste were disposed of properly, according to the Household Chemical Collection Division. Chemical wastes from commercial or business operations are not accepted at these facilities.

Both facilities have the capacity to store approximately 300 gallons of waste oil and approximately 100 vehicle batteries. The waste oil and batteries are removed for

recycling by private contractors on a monthly basis. The County maintains “spotters” at each landfill-facility to inspect loads for hazardous wastes.

In addition to accepting household chemical wastes at the St. Cloud Transfer Station and the Bass Road Landfill-facility, the County schedules waste tire Amnesty/Mobile Collection Days approximately four to six six to eight times per year at the Bass Road Operations Site. ~~These collection days are scheduled in different areas of the County throughout the year. The collection sites are located within the Cities of Kissimmee and St. Cloud. This service is provided to the residents of the County at no charge. These days are well advertised through the county website and social media.~~ The quantities of household chemical waste and waste tire collected ~~during Amnesty Days for~~ in FY 2017/2004 were 10,000 pounds of tires and motor oil, 34,000 pounds of household chemicals, pesticides, 126,000 pounds of paints, 50,000 pounds of batteries, and 5,000 pounds of flammable liquids.

~~It is estimated that Osceola County generated approximately 185,000 pounds of household chemical waste in 2004. The majority of this waste is related to latex and oil based paints, batteries, waste oils, wet batteries and solvents. It is estimated that the County will generate approximately 210,000 pounds of household chemical waste by the end of 2005.~~

C. SOLID WASTE FACILITY NEEDS ANALYSIS

1. Level of Service Standards

The County has a contract with Omni Waste Capital Environmental to reserve 30 years of guaranteed capacity at the J.E.D. Solid Waste Facility. As stated in Condition Use Plan CU 00-00035-Omni Waste, LLC, and item number 13, the guarantee applies to all Osceola County residents and is valid through the year 2034. The County will continue to monitor their level of service standards to maintain accordance with EPA standards as applicable. ~~According to the concurrency management system, the County operated at a level of service of 5.95 pounds per capita per day. The previous plan established five (5) pounds per capita per day level of service standard.~~

~~Although the County has exceeded its adopted level of service standard, the level of service standard of five pounds per day was adopted in 1993 and represents a low standard, considering the amount of population growth that has occurred within the County since the early 1990s. Therefore, the County must adjust its level of service standard to six (6) pounds per capita per day for residential uses. Regarding standards for nonresidential land uses, such as commercial, industrial, and institutional land uses, the County adopts a solid waste level of service standard of 10 pounds per 1,000 square feet. This standard is based upon the solid waste generation rates established in the County’s concurrency management system (see Table 4-3).~~

2. Solid Waste Facilities

The Southport Landfill closed on August 2, 2004, the City of St. Cloud Landfill closed in

the fall of 2003. The Bass Road C&D Landfill received a renewed operational permit extending service to November 2009. As such, the County initiated an alternate long-term analysis for solid waste disposal options. The result of this study, which was approved by County Commission on January 14, 2002, is allowed for the restructuring of the County's solid waste facilities operation and the construction of the new privately owned and maintained facility (J.E.D. Solid Waste Facility), which at this time is capable of servicing Osceola County through 2034. for the next 30 years. The following is a description of the restructured facilities and operations:

a. Southport Road Landfill

This facility ceased operations on August 2, 2004. The site continues to be under long term care by the County's Solid Waste Division.

b. Bass Road Landfill

~~The Bass Road facility is estimated to reach maximum capacity in early 2008. Currently, C&D waste disposal cell was properly closed out per Department of Environmental Protection guidelines in 2009. operations are confined to the final cell. Two previous MSW disposal cells have been closed out and now receive long-term maintenance care only. The facility has recently been upgraded through the construction of roadways, new buildings, restrooms, and landscaping. The County has received a new operational permit (SO 49 0128515 005) extending service to November 2009.~~

c. St. Cloud Landfill

This facility ceased operations in the fall of 2003.

d. J.E.D. Solid Waste Facility

Osceola County has determined that the most effective and efficient method for disposal of future MSW solid waste is through a private solid waste management company. To this end, Osceola County ~~has~~ entered into an agreement with the private company of Omni Waste Capital Environment to provide solid waste management services. ~~This company has applied for and received permit approvals for the construction of~~ The J.E.D. Solid Waste Facility, a MSW Class I Solid Waste Disposal Landfill. The facility is located in eastern Osceola County on off of Highway 441 at 1051 Omni Way, St. Cloud Florida 32773, approximately two miles north of Yeehaw Junction and five miles south of Holopaw, and ~~The construction of this facility was completed in January 2004. The J.E.D. Solid Waste Facility was constructed on a 2,250-acre parcel and disposal operations will be contained within a 195-acre portion of the overall parcel. An additional 100 acres is reserved for supporting facilities and required buffer areas. The maximum landfill height has been limited to 330 feet.~~

Hazardous waste materials will not be accepted at this facility.

3. Solid Waste Collection Services

Despite the changes and restructuring of the Osceola Solid Waste operations, the solid waste collection services will remain relatively unchanged. Residential and commercial collection of solid waste will continue to be provided by the Cities Kissimmee and St. Cloud. Additionally, Osceola County will continue to provide collection services within the ~~northern~~ unincorporated portions of the County and the Kenansville drop-off stations ~~within the southern portions~~. The collection routes will remain unchanged with the ~~MSW municipal solid waste being brought to the Southport Road or St. Cloud landfills~~ transferred from approved transfer stations. ~~These landfills will be acting as transfer stations until the solid waste may be brought to the J.E.D. Solid Waste Facility for final disposal. C&D materials may will continue to be delivered to the St. Cloud Transfer Station, the J.E.D. Landfill facility or out of county sites. Bass Road Landfill until capacity is reached or the permit expires, whichever is first.~~ Commercial and residential yard waste may be delivered to the Bass Road Operations site.

4. Recycling Program

~~Despite the state no longer requiring a 30 percent reduction in the solid waste stream through recycling, Osceola County will continue to provide recycling services to the public. The County will contract for the collection and processing of recyclables with a private vendor. Although the vendor may change, the same recycling materials will continue to be accepted. Displays will be provided to demonstrate the process and aid in marketing recycled products to commercial vendors.~~

5. Household Chemical Wastes

~~The Household chemical waste facilities is currently accepted located at the Bass Road landfill and the St. Cloud transfer site, will continue to accept household chemical waste materials.~~

6. Solid Waste Facility Replacement, Expansion and New Facility Siting

As previously stated, Osceola County's solid waste disposal operations have not recently undergone significant changes. With the closing of the Southport Road Landfill, the County ~~has entered into a 30-year private contract agreement~~ for disposal of solid waste ~~in at~~ the J.E.D. Solid Waste Facility, owned and operated by Omni Waste Capital Environment. ~~This facility has adequate capacity to service Osceola County through the next 30 years and as such, the County has not been engaged in the siting of new facilities.~~

~~In conjunction with the permit renewal for the Bass Road Landfill, extending service until November 2009, improvements to the facility have been completed.~~

D. CONCLUSION

~~Following the trend of privatization in governmental operations, the County has chosen to contract out its solid waste disposal operations to a private company. Thus, in the future, the County's role will be to coordinate with this private company by providing population projections and other relevant data to ensure adequate future capacity in its landfill. Additionally, as the Cities of Kissimmee and St. Cloud grow in population, as and the municipalities annex and expand services to unincorporated areas, and as the Cities expand services to unincorporated areas, additional coordination with the Cities of Kissimmee and St. Cloud will be required in the planning timeframe. The County may consider increasing its recycling efforts and introducing recycling collections in unserved areas to reduce solid waste. Furthermore, more analysis is needed in the future to assess the impacts of the tourism areas, namely the short-term rental units, to determine how the tourist population is affecting the County's solid waste level of service standards.~~

Table 4-1: Osceola County Landfill Historical Residential Tonnages: Solid Waste Volumes Tonnage FY 2002-2003

LANDFILL		SOUTHPORT	BASS ROAD	TOTAL
January	2002	8050.58	7590.21	15640.79
February	2002	7361.93	7334.90	14696.83
March	2002	8651.19	8535.61	17186.80
April	2002	8824.72	7889.36	16714.10
May	2002	7013.45	8037.88	15051.33
June	2002	7070.86	8545.90	15616.76
July	2002	8324.19	9195.97	17520.16
August	2002	8037.21	9266.60	17303.81
September	2002	6988.29	8495.65	15483.94
October	2002	6104.57	8633.66	14738.23
November	2002	5755.70	5531.95	11287.65
December	2002	7636.26	5132.05	12768.31
January	2003	7528.55	6680.59	14209.14
February	2003	6874.21	4758.58	11632.89
March	2003	7536.17	6024.43	13560.60
April	2003	6632.80	5443.18	12075.98
May	2003	5975.96	6738.21	12714.17
June	2003	5870.67	6252.77	12123.44
July	2003	7225.44	6384.47	13609.91
August	2003	6124.62	4512.43	10637.05
September	2003	6206.11	6529.39	12735.50
October	2003	6104.57	6930.09	13034.66
November	2003	5755.70	8951.67	14707.37
December	2003	7636.26	7653.38	15289.64

Note: Totals represent tonnage in thousands

Source: Osceola County Solid Waste Department, 2005

2017

Month	Solid Waste/Bulk Waste	Recyclables/White Goods	Yard Waste
January	4855.21	1636.72	605.8
February	4070.64	1328.07	698.49
March	4764.92	1504.59	896.49
April	4211.69	1368.36	844.51
May	4623.68	1508.04	906.03
June	5244.86	1609.04	897.38
July	4905.07	1539.86	858.7
August	4886.59	1541.32	1060.82
September	4286.52	1280.17	1376.23
October	4804.07	1520.94	954.03
November	4701.24	1525.55	898.88
December	4296.1	1528.12	484.43
TOTAL	55650.59	17890.78	10481.79

2018

Month	Solid Waste/Bulk Waste	Recyclables/White Goods	Yard Waste
January	4942.38	1790.82	645.7
February	4256.43	1448.02	886.43
March	4828.21	1874.14	933.47
April	4702.97	1586.46	881.39
May	5007.19	1734.18	964.97
June	4885.1	1660.22	911.61
July	N/A	N/A	N/A
August	N/A	N/A	N/A
September	N/A	N/A	N/A
TOTAL	28622.28	10093.84	5223.57

Table 4-2: Recycling Drop Off Stations

DROP-OFF STATION NAME	Station Location
Deerwood Elementary School	Marigold Avenue, Poinciana
Bass Road Recycling Center	750 S. Bass Road, Kissimmee
Pleasant Hill Elementary	Pleasant Hill Road, Kissimmee
Kash n Karry	Front Parking Lot, Kissimmee
Holy Redeemer Church	Thacker Avenue, Kissimmee
Highlands Elementary	Donegan Avenue, Kissimmee
Elks Lodge	Kings Highway, Kissimmee
Buenaventura Lakes	Community Center, Royal Palm Drive
Narcoossee Vol. Fire Department	C.R. 15, Narcoossee
Deer Run Fire Department	Deer Run Road, St. Cloud Manor
St. Cloud Landfill	17 th Street, St. Cloud
Oak Street Park	Kissimmee Women's Club, Kissimmee
Kenansville Drop-off Station	Kenansville
Yeehaw Junction Drop-off Station	Yeehaw Junction

<u>Drop Off Station Name</u>	<u>Station Location</u>
<u>Bass Road Recycling Center</u>	<u>750 S. Bass Road, Kissimmee</u>
<u>Holy Redeemer Church</u>	<u>Thacker Avenue, Kissimmee</u>
<u>St. Cloud Transfer Station</u>	<u>17th Street, St. Cloud</u>
<u>Kenansville Drop-off Station</u>	<u>Kenansville</u>

Table 4-3: Osceola County Concurrency Management System Solid Waste Generation Rates

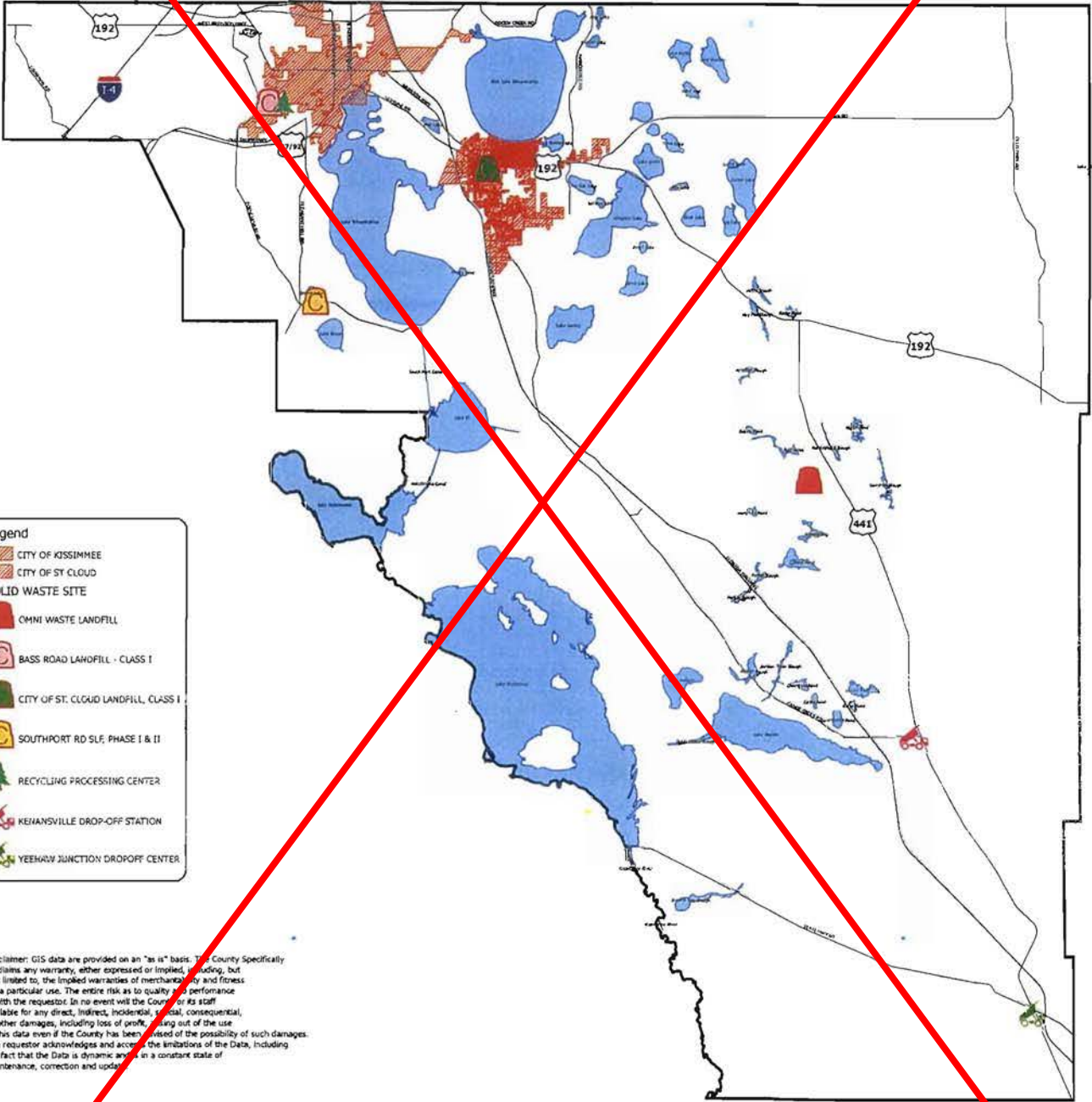
LAND USE	UNIT TYPE	SOLID WASTE Generation (lbs)
Residential Uses:		
Single Family	DU	10.4
Townhouse, Duplex, Triplex	DU	8.8
Garden Apartment	DU	7.4
Mobile Home	DU	7.6
High Rise Apartment	DU	7.4
Retire Community	DU	6
Hotel	DU	3
Motel	Room	3
Nursing Home	Bed	3
ACLF	DU	4.5
Boarding House	Person	3
Rooming House	Person	3
Non-Residential Uses: General Uses:		
Office	1,000 sq. ft.	10
Office (1 Story)	Acre	435.6
Office (Multi Story)	Acre	653.4
Medium Office	1,000 sq. ft.	10
Bank	1,000 sq. ft.	10
Bank w/Drive Thru	1,000 sq. ft.	10

LAND-USE	UNIT TYPE	SOLID WASTE
Industrial, Light	1,000 sq. ft.	20
Industrial, Light	Acre	871.2
Industrial Park	1,000 sq. ft.	20
Industrial Park	Acre	871.2
Mini Warehouse	1,000 sq. ft.	20
Commercial less than 200,000 sq. ft.	1,000 sq. ft.	65
Commercial 200,000 sq. ft. plus	1,000 sq. ft.	65
Commercial less than 1.1 Acres, 1 Story	Acre	2831.4
Commercial 1.1 – 5.5 Acres, 1 Story	Acre	2831.4
Commercial 5.6 – 27.7 Acres, 1 Story	Acre	2831.4
Commercial 27.8 Acres plus, 1 Story	Acre	2831.4
Commercial less than 4.5 Acres, Multi Story	Acre	4247.1
Commercial 4.6 – 22.2 Acres, Multi Story	Acre	4247.1
Commercial 22.3 Acres plus, Multi Story	Acre	4247.1
Discount Store	1,000 sq. ft.	40
New Car Sales	1,000 sq. ft.	40
Hospital	Bed	8
Park	Acre	20.7
Recreation Club	Person	0.25
Church	1,000 sq. ft.	40
Church	Seat	0.07
Church (w/Kitchen)	Seat	0.25
Elementary School	Student	0.25
Middle School	Student	0.25
High School	Student	0.25
Boarding School	Student	0.25
Day Care	Student	0.25
Gas/Service Station	Bay	See Formula
Gas Station (Self Serve)	Pump	3.1
Gas Station w / Convenience Store	1,000 sq. ft.	20
Movie Theater w/Matinee	Screen	51.5
Movie Theater/Auditorium w/o Matinee	Seat	0.25
Bowling Alley (Bar & Food)	Lane	32.5
Non-Residential Uses: Specific Uses:	-	-
Restaurant (High Turnover)	1,000 sq. ft.	260
Restaurant (High Turnover, 24 Hour)	1,000 sq. ft.	312
Restaurant (Fast Food, Drive Thru)	1,000 sq. ft.	375
Restaurant (Fast Food, No Drive Thru)	1,000 sq. ft.	390
Restaurant (Quality)	1,000 sq. ft.	216
Bar/Cocktail Lounge	Seat	4
Laundromat	Machine	3.25

Source: Osceola County Planning Department, 2003

Map 4-1 Solid Waste Facilities Countywide

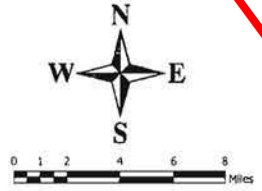
Solid Waste Facilities

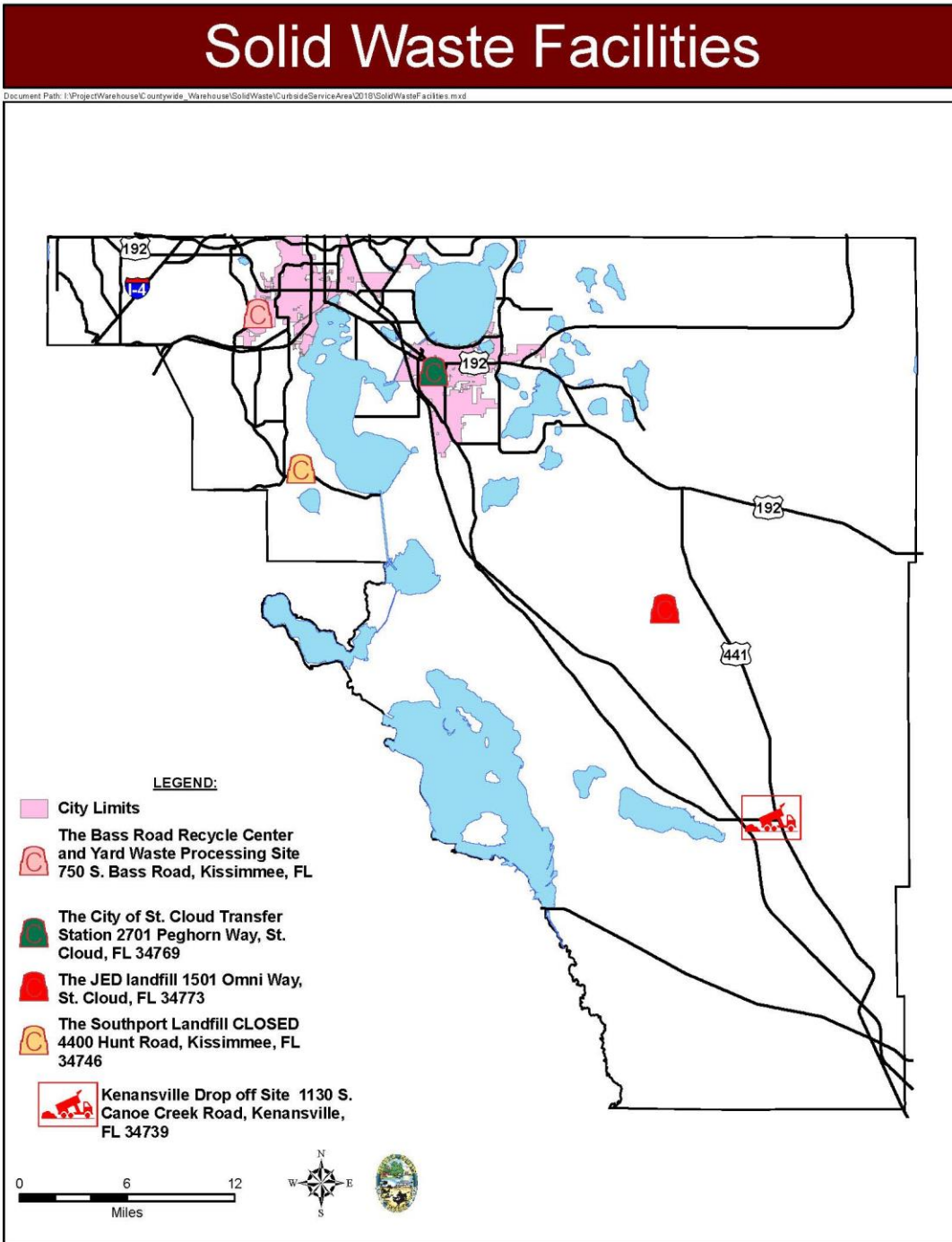


Legend

- CITY OF KISSIMMEE
- CITY OF ST. CLOUD
- SOLID WASTE SITE
- OMNI WASTE LANDFILL
- BASS ROAD LANDFILL - CLASS I
- CITY OF ST. CLOUD LANDFILL, CLASS I
- SOUTHPORT RD SLF, PHASE I & II
- RECYCLING PROCESSING CENTER
- KEANSVILLE DROP-OFF STATION
- YEEHAW JUNCTION DROPOFF CENTER

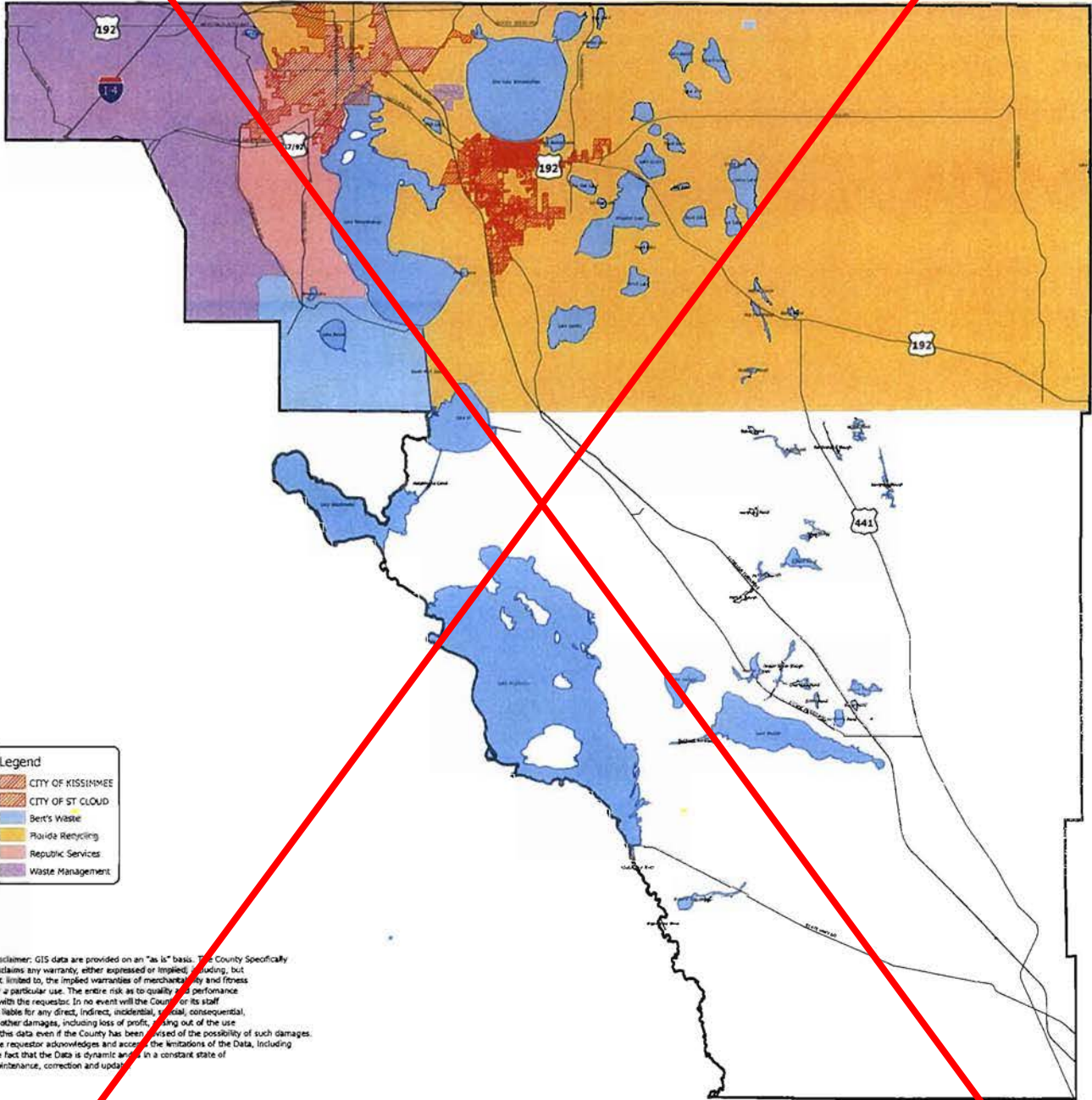
Disclaimer: GIS data are provided on an "as is" basis. The County Specifically disclaims any warranty, either expressed or implied, including, but not limited to, the implied warranties of merchantability and fitness for a particular use. The entire risk as to quality and performance is with the requestor. In no event will the County or its staff be liable for any direct, indirect, incidental, special, consequential, or other damages, including loss of profit, arising out of the use of this data even if the County has been advised of the possibility of such damages. The requestor acknowledges and accepts the limitations of the Data, including the fact that the Data is dynamic and in a constant state of maintenance, correction and update.





Map 4-2 Curbside Service Area Map

Solid Waste Service Area



Legend

	CITY OF KISSIMMEE
	CITY OF ST. CLOUD
	Bert's Waste
	Florida Recycling
	Republic Services
	Waste Management

Disclaimer: GIS data are provided on an "as is" basis. The County Specifically disclaims any warranty, either expressed or implied, including, but not limited to, the implied warranties of merchantability and fitness for a particular use. The entire risk as to quality and performance is with the requestor. In no event will the County or its staff be liable for any direct, indirect, incidental, special, consequential, or other damages, including loss of profit, arising out of the use of this data even if the County has been advised of the possibility of such damages. The requestor acknowledges and accepts the limitations of the Data, including the fact that the Data is dynamic and in a constant state of maintenance, correction and updates.



Osceola County Planning Department
GIS Section



