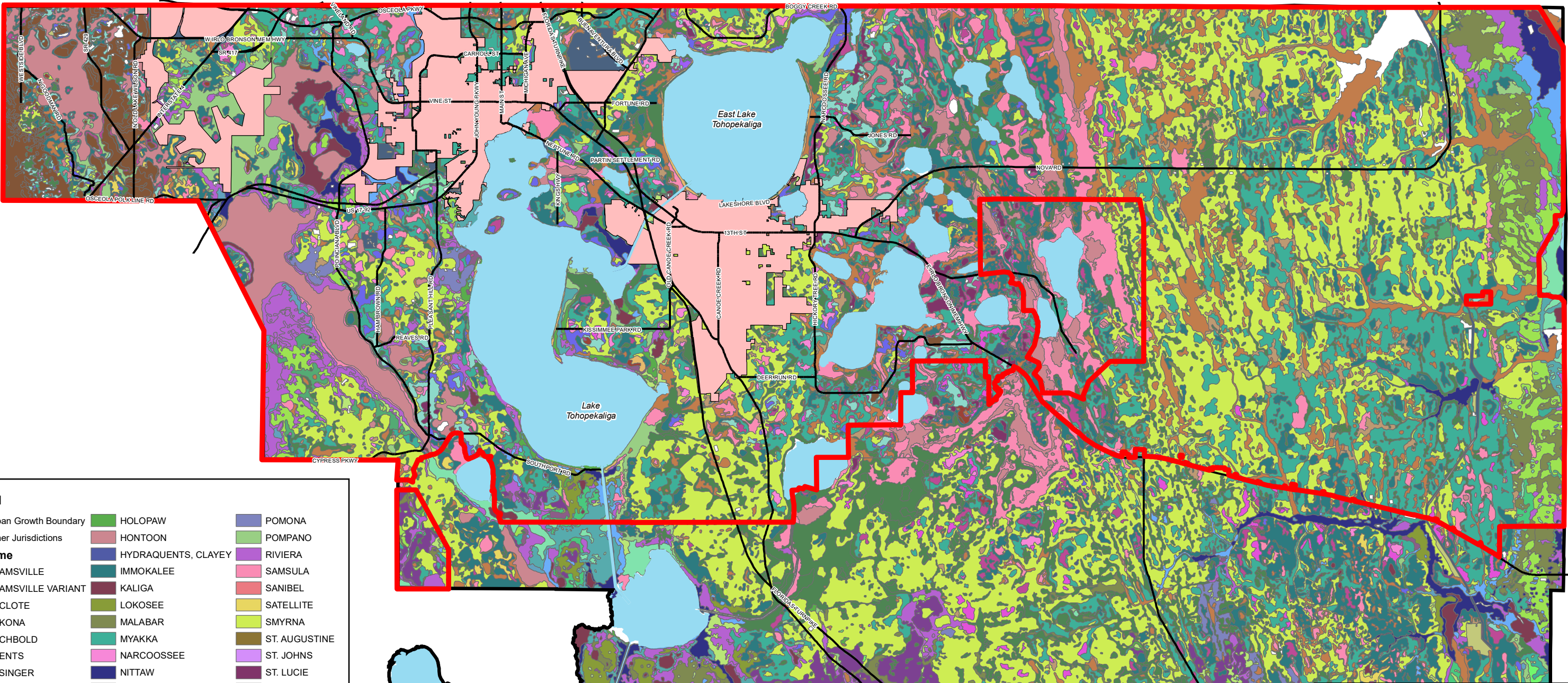


# FLU 6B: Soils and Minerals UGB - 2040

G:\ComprehensivePlan\ComprehensivePlan\Supplement\_20\FLU\_6B.mxd



**Legend**

- Urban Growth Boundary
- Other Jurisdictions

**Soil Name**

<ul style="list-style-type: none"> <li><span style="background-color: #4169e1; display: inline-block; width: 10px; height: 10px; margin-right: 5px;"></span> ADAMSVILLE</li> <li><span style="background-color: #d2b48c; display: inline-block; width: 10px; height: 10px; margin-right: 5px;"></span> ADAMSVILLE VARIANT</li> <li><span style="background-color: #add8e6; display: inline-block; width: 10px; height: 10px; margin-right: 5px;"></span> ANCLOTE</li> <li><span style="background-color: #32cd32; display: inline-block; width: 10px; height: 10px; margin-right: 5px;"></span> ANKONA</li> <li><span style="background-color: #c71585; display: inline-block; width: 10px; height: 10px; margin-right: 5px;"></span> ARCHBOLD</li> <li><span style="background-color: #2f4f4f; display: inline-block; width: 10px; height: 10px; margin-right: 5px;"></span> ARENTS</li> <li><span style="background-color: #800000; display: inline-block; width: 10px; height: 10px; margin-right: 5px;"></span> BASINGER</li> <li><span style="background-color: #654321; display: inline-block; width: 10px; height: 10px; margin-right: 5px;"></span> CANDLER</li> <li><span style="background-color: #e06666; display: inline-block; width: 10px; height: 10px; margin-right: 5px;"></span> CASSIA</li> <li><span style="background-color: #9370db; display: inline-block; width: 10px; height: 10px; margin-right: 5px;"></span> CHOBEE</li> <li><span style="background-color: #3cb371; display: inline-block; width: 10px; height: 10px; margin-right: 5px;"></span> DELRAY</li> <li><span style="background-color: #90ee90; display: inline-block; width: 10px; height: 10px; margin-right: 5px;"></span> EAUGALLIE</li> <li><span style="background-color: #cd5c5c; display: inline-block; width: 10px; height: 10px; margin-right: 5px;"></span> FELDA</li> <li><span style="background-color: #6495ed; display: inline-block; width: 10px; height: 10px; margin-right: 5px;"></span> FLORIDANA</li> <li><span style="background-color: #3cb371; display: inline-block; width: 10px; height: 10px; margin-right: 5px;"></span> GENTRY</li> </ul>	<ul style="list-style-type: none"> <li><span style="background-color: #3cb371; display: inline-block; width: 10px; height: 10px; margin-right: 5px;"></span> HOLOPAW</li> <li><span style="background-color: #800000; display: inline-block; width: 10px; height: 10px; margin-right: 5px;"></span> HONTOON</li> <li><span style="background-color: #191970; display: inline-block; width: 10px; height: 10px; margin-right: 5px;"></span> HYDRAQUENTS, CLAYEY</li> <li><span style="background-color: #2f4f4f; display: inline-block; width: 10px; height: 10px; margin-right: 5px;"></span> IMMOKALEE</li> <li><span style="background-color: #654321; display: inline-block; width: 10px; height: 10px; margin-right: 5px;"></span> KALIGA</li> <li><span style="background-color: #808000; display: inline-block; width: 10px; height: 10px; margin-right: 5px;"></span> LOKOSEE</li> <li><span style="background-color: #6b8e23; display: inline-block; width: 10px; height: 10px; margin-right: 5px;"></span> MALABAR</li> <li><span style="background-color: #20b2aa; display: inline-block; width: 10px; height: 10px; margin-right: 5px;"></span> MYAKKA</li> <li><span style="background-color: #ff69b4; display: inline-block; width: 10px; height: 10px; margin-right: 5px;"></span> NARCOOSSEE</li> <li><span style="background-color: #191970; display: inline-block; width: 10px; height: 10px; margin-right: 5px;"></span> NITTAW</li> <li><span style="background-color: #654321; display: inline-block; width: 10px; height: 10px; margin-right: 5px;"></span> OLDSMAR</li> <li><span style="background-color: #808000; display: inline-block; width: 10px; height: 10px; margin-right: 5px;"></span> ONA</li> <li><span style="background-color: #800000; display: inline-block; width: 10px; height: 10px; margin-right: 5px;"></span> PAOLA</li> <li><span style="background-color: #4682b4; display: inline-block; width: 10px; height: 10px; margin-right: 5px;"></span> PARKWOOD</li> <li><span style="background-color: #3cb371; display: inline-block; width: 10px; height: 10px; margin-right: 5px;"></span> PINEDA</li> <li><span style="background-color: #808000; display: inline-block; width: 10px; height: 10px; margin-right: 5px;"></span> PITS</li> <li><span style="background-color: #808000; display: inline-block; width: 10px; height: 10px; margin-right: 5px;"></span> PLACID</li> <li><span style="background-color: #800080; display: inline-block; width: 10px; height: 10px; margin-right: 5px;"></span> PLACID VARIANT</li> <li><span style="background-color: #800080; display: inline-block; width: 10px; height: 10px; margin-right: 5px;"></span> POMELLO</li> </ul>	<ul style="list-style-type: none"> <li><span style="background-color: #4169e1; display: inline-block; width: 10px; height: 10px; margin-right: 5px;"></span> POMONA</li> <li><span style="background-color: #3cb371; display: inline-block; width: 10px; height: 10px; margin-right: 5px;"></span> POMPANO</li> <li><span style="background-color: #800080; display: inline-block; width: 10px; height: 10px; margin-right: 5px;"></span> RIVIERA</li> <li><span style="background-color: #ff69b4; display: inline-block; width: 10px; height: 10px; margin-right: 5px;"></span> SAMSULA</li> <li><span style="background-color: #cd5c5c; display: inline-block; width: 10px; height: 10px; margin-right: 5px;"></span> SANIBEL</li> <li><span style="background-color: #f0e68c; display: inline-block; width: 10px; height: 10px; margin-right: 5px;"></span> SATELLITE</li> <li><span style="background-color: #90ee90; display: inline-block; width: 10px; height: 10px; margin-right: 5px;"></span> SMYRNA</li> <li><span style="background-color: #808000; display: inline-block; width: 10px; height: 10px; margin-right: 5px;"></span> ST. AUGUSTINE</li> <li><span style="background-color: #9370db; display: inline-block; width: 10px; height: 10px; margin-right: 5px;"></span> ST. JOHNS</li> <li><span style="background-color: #483d8b; display: inline-block; width: 10px; height: 10px; margin-right: 5px;"></span> ST. LUCIE</li> <li><span style="background-color: #4682b4; display: inline-block; width: 10px; height: 10px; margin-right: 5px;"></span> TAVARES</li> <li><span style="background-color: #4169e1; display: inline-block; width: 10px; height: 10px; margin-right: 5px;"></span> TERRA CEIA</li> <li><span style="background-color: #800000; display: inline-block; width: 10px; height: 10px; margin-right: 5px;"></span> TOMOKA</li> <li><span style="background-color: #800000; display: inline-block; width: 10px; height: 10px; margin-right: 5px;"></span> VALKARIA</li> <li><span style="background-color: #3cb371; display: inline-block; width: 10px; height: 10px; margin-right: 5px;"></span> WABASSO</li> <li><span style="background-color: #3cb371; display: inline-block; width: 10px; height: 10px; margin-right: 5px;"></span> WAUCHULA</li> <li><span style="background-color: #4682b4; display: inline-block; width: 10px; height: 10px; margin-right: 5px;"></span> WINDER</li> <li><span style="background-color: #ffa500; display: inline-block; width: 10px; height: 10px; margin-right: 5px;"></span> ZOLFO</li> </ul>
---	--	---

\* This map includes all city annexations to date.

Soils Data Provided by the Florida Geographic Data Library.  
Data Provided Valid as of November 2015.

MAP PRODUCED BY OSCEOLA COUNTY  
COMMUNITY DEVELOPMENT  
GIS SECTION  
29 NOVEMBER 2018

**DISCLAIMER:** The County specifically disclaims any warranty, either expressed or implied, including, but not limited to, the implied warranties of merchantability and fitness for a particular use. The entire risk as to quality and performance is with the requestor. In no event will the County or its staff be liable for any direct, indirect, incidental, special, consequential, or other damages, including loss of profit, arising out of the use of this data even if the County has been advised of the possibility of such damages. The requestor acknowledges and accepts the limitations of the Data, including the fact that the Data is dynamic and is in a constant state of maintenance, correction and update.