



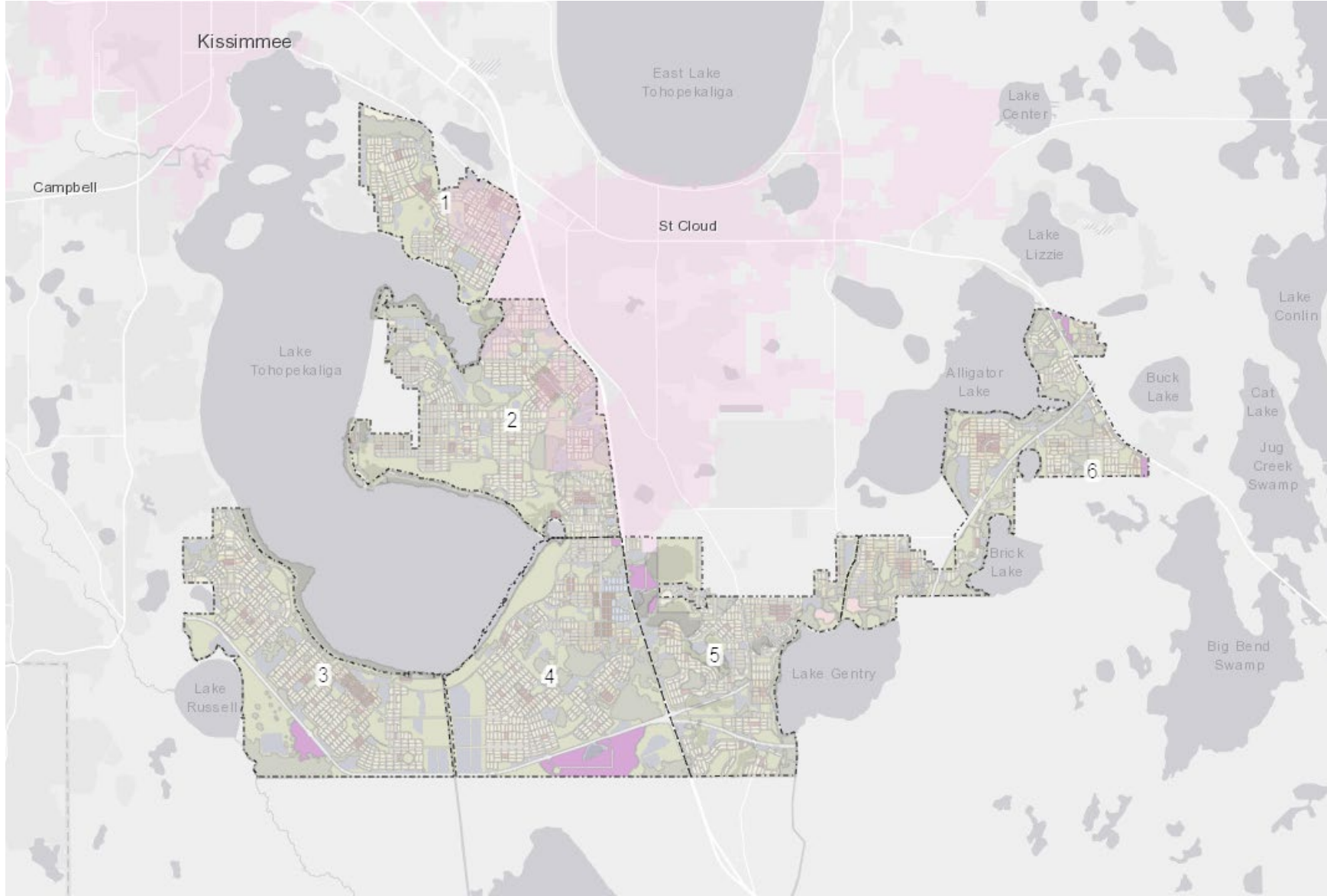
# Osceola Transportation

**Southeast Area Transportation Study – SEATS**



# MXD History

## Conceptual Master Plans



Great Recession  
2007-2009

Changes to Growth  
Management law  
2011

SunRail service to  
Osceola 2018

Urban Land  
Institute Panel  
Lake Toho DRIs

Adopted Conceptual  
Master Plans (CMPs)  
for Mixed Use  
Districts (MXDs)

Restructured  
LDC  
Adopted MXD  
code

Mobility Fee  
Study

Mobility Fee  
Ordinance

Comprehensive  
Plan update  
Centers and  
Mixed Use

Mobility Fee  
Study &  
Ordinance 5-  
year Update

Alligator  
Chain of  
Lakes CMP



Comprehensive Plan  
update  
Established Urban  
Growth Boundary and  
Mixed Use Districts

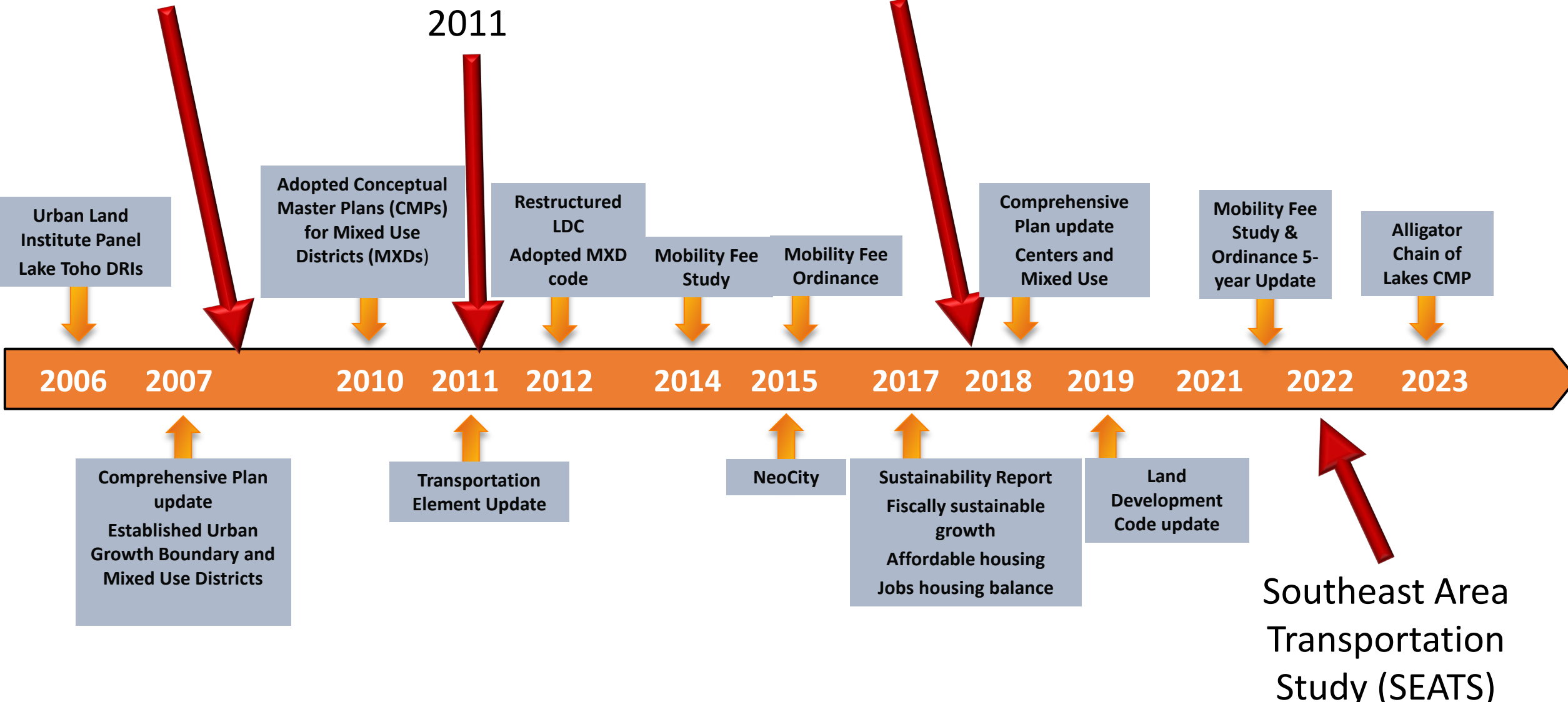
Transportation  
Element Update

NeoCity

Sustainability Report  
Fiscally sustainable  
growth  
Affordable housing  
Jobs housing balance

Land  
Development  
Code update

Southeast Area  
Transportation  
Study (SEATS)







*Urban Advantage*



*Urban Advantage*



*Urban Advantage*



*Urban Advantage*





*Urban Advantage*

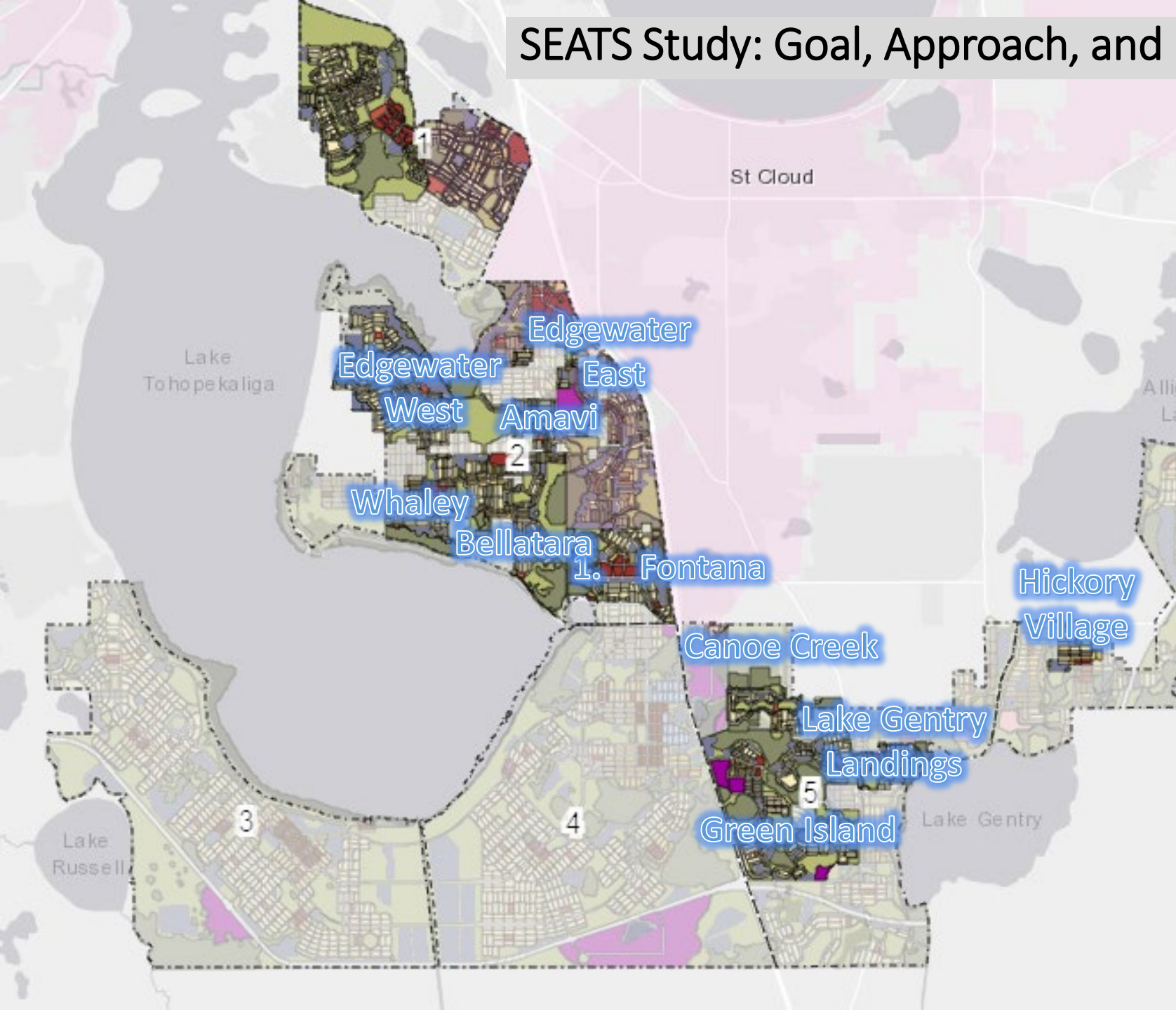
# JPA Transportation Implementation

Osceola County & City of St. Cloud

## Joint Planning Area Transportation Implementation (JPA-TI) Activities:

- Initial Roadway Maintenance Transfer
- JPA Transportation Inter-Local Agreement (ILA)
- Future Roadway Maintenance Transfer
- Initial Roadway Build-Out Coordination
- Joint Mobility Fee Study Update

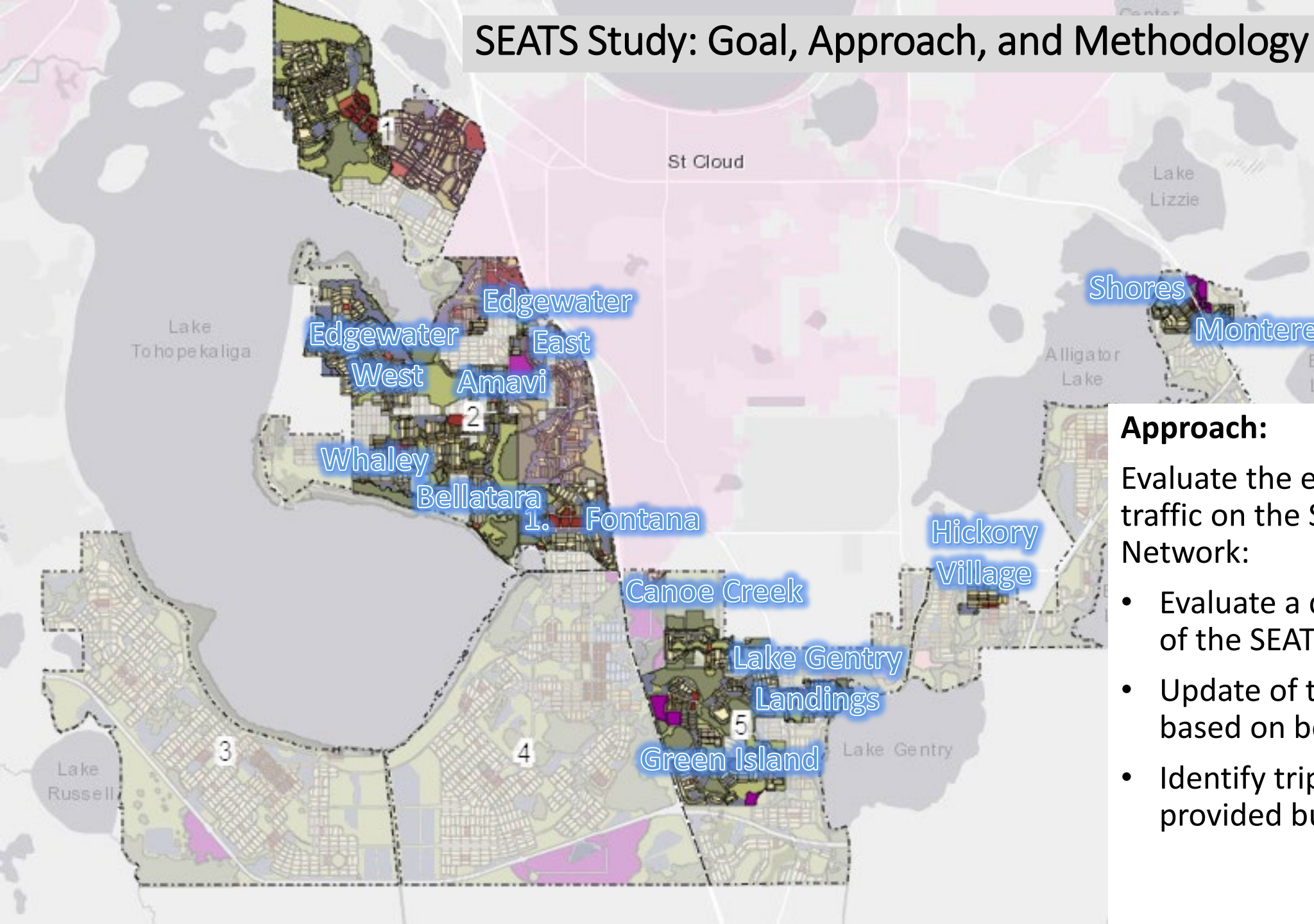
# SEATS Study: Goal, Approach, and Methodology



## Goal:

Evaluate the transportation network through the planning horizon year of 2045, identify the impact to the network from the 12 initial Mixed-Use District developers, identify the number of lanes needed for the roadway system in 2045, identify the timing/phasing of needed improvements at 5-year increments, and indicate the percentage of impact on the specific roadway segments as a proportionate share of the total trips in 2045 to help identify what each developer should contribute towards construction of the future analyzed SEATS roadway network.

# SEATS Study: Goal, Approach, and Methodology



## Approach:

Evaluate the existing and projected traffic on the SEATS Roadway Network:

- Evaluate a detailed 2045 buildout of the SEATS developments
- Update of the roadway network based on best available data
- Identify trips based on Developer provided buildout data



# SEATS Roadway Network Map

Southeast Area Transportation Study – SEATS





# SEATS Traffic Volumes (Sample Corridor)

Southeast Area Transportation Study – SEATS

<u>Segment</u>	<u>Current No. of Lanes</u>	<u>2045 No. of Lanes</u>	<u>TRIPS</u>			
			<u>Current Traffic</u>	<u>Other Development Traffic</u>	<u>Development Traffic</u>	<u>Total Volume</u>
Kissimmee Park Road						
End of Roadway to Ave O	2	4	1,254	6,023	996	8,273
Ave O to Ave Q	2	4	2,513	8,105	6,012	16,630
Ave Q to Ave D	2	4	2,513	10,779	7,479	20,771
Ave D to Ave G	2	4	2,513	19,642	18,387	40,542
Ave G to Cross Prairie Pkwy	2	4	2,513	20,726	19,785	43,024



# SEATS Roadway Phasing Plans

## Background

**Goal:** Understand roadway improvement priorities.

### **Approach:**

Evaluate the roadway segment needs for five-year intervals based on the:

1. Detailed buildout/phasing plans of the SEATS developments
2. Estimated roadway segment traffic operations (i.e. Level of Service, volume to capacity ratio)
3. Expected travel patterns

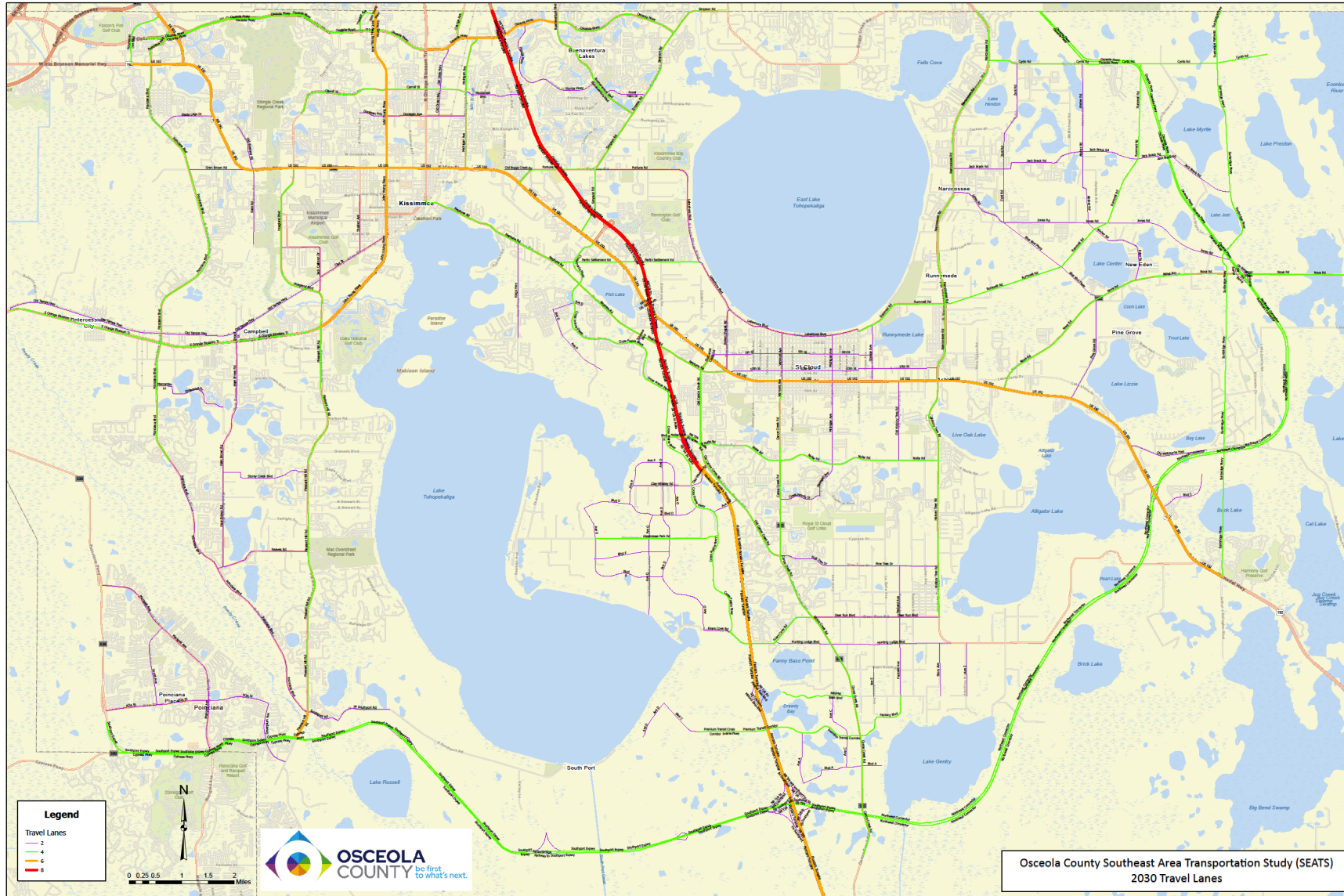
### **Detailed Methodology:**

- Developed roadway segment analysis spreadsheet based on the expected roadway characteristics for sensitivity analysis
- Developed year 2030, 2035, 2040, and 2045 modeling scenarios (socio-economic data and roadway network), using the approved Osceola 2045 SEATS travel demand model
- Analyzed the preliminary roadway segment performance for year 2030, 2035, 2040, and 2045
- Evaluated the roadway segment needs for the corresponding year, adjusted the roadway network as needed and re-run the travel demand model scenario



# SEATS Roadway Phasing Plan 2030 Map

## Southeast Area Transportation Study – SEATS

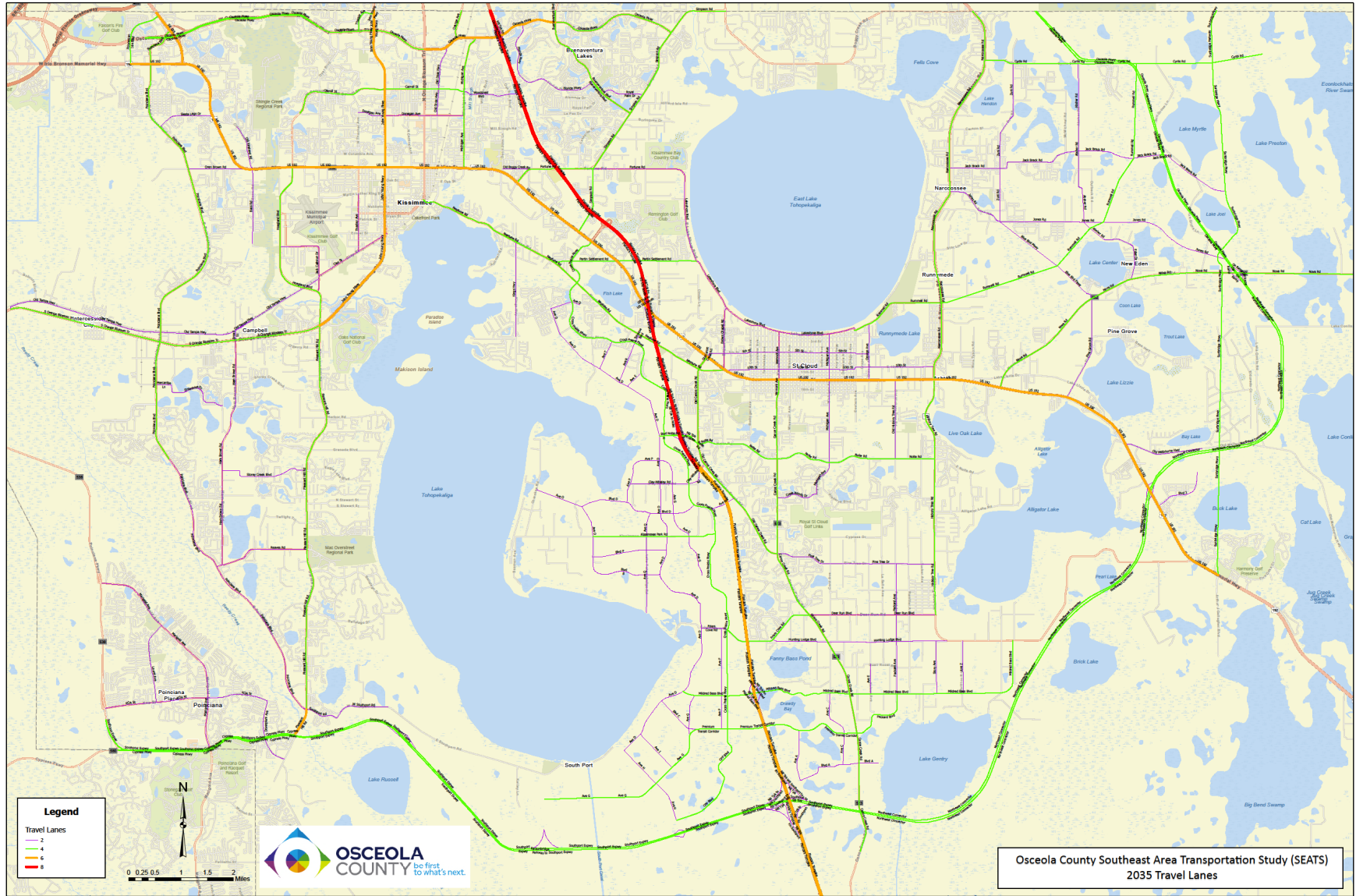






# SEATS Roadway Phasing Plan 2035 Map

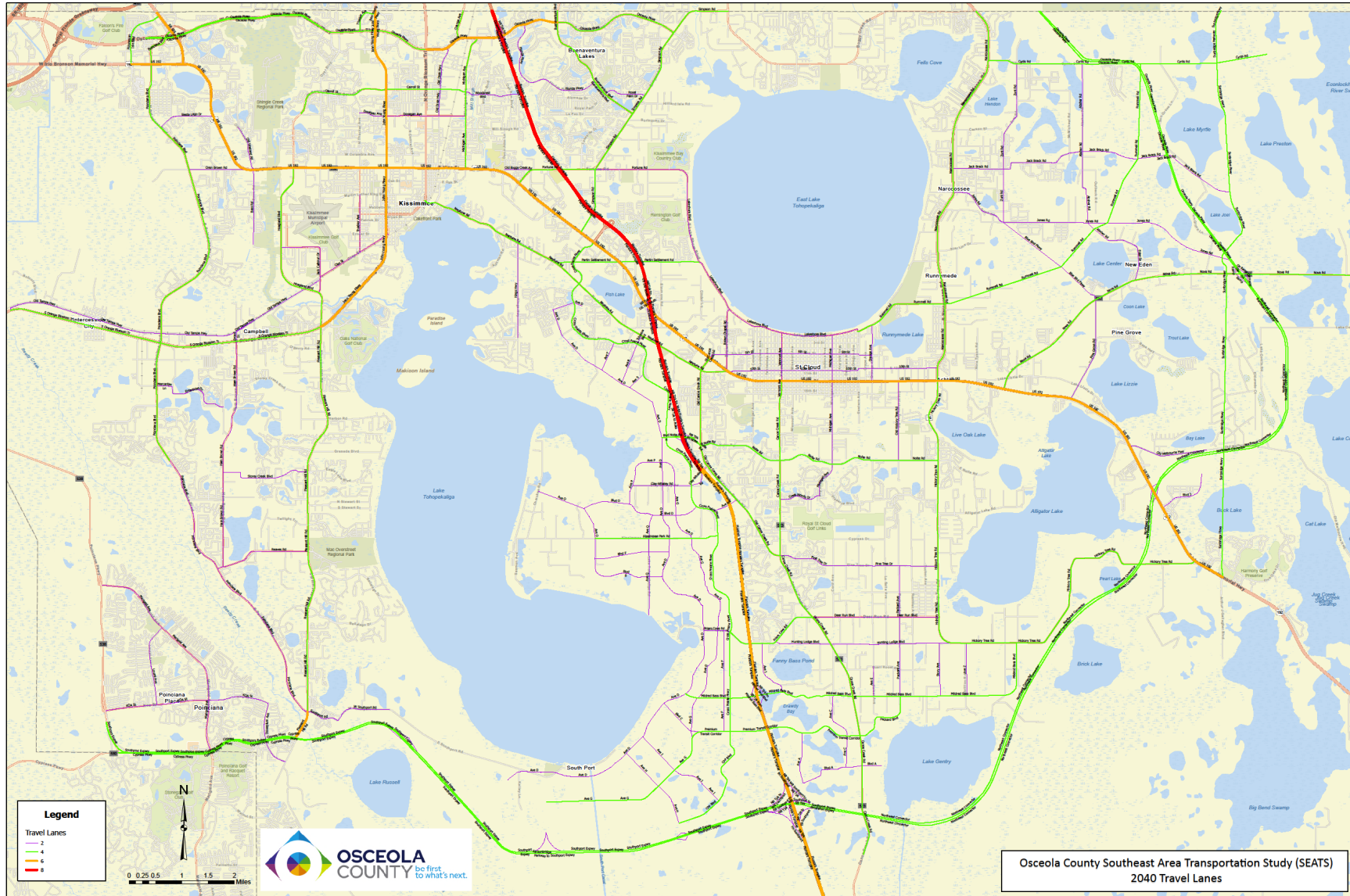
## Southeast Area Transportation Study – SEATS





# SEATS Roadway Phasing Plan 2040 Map

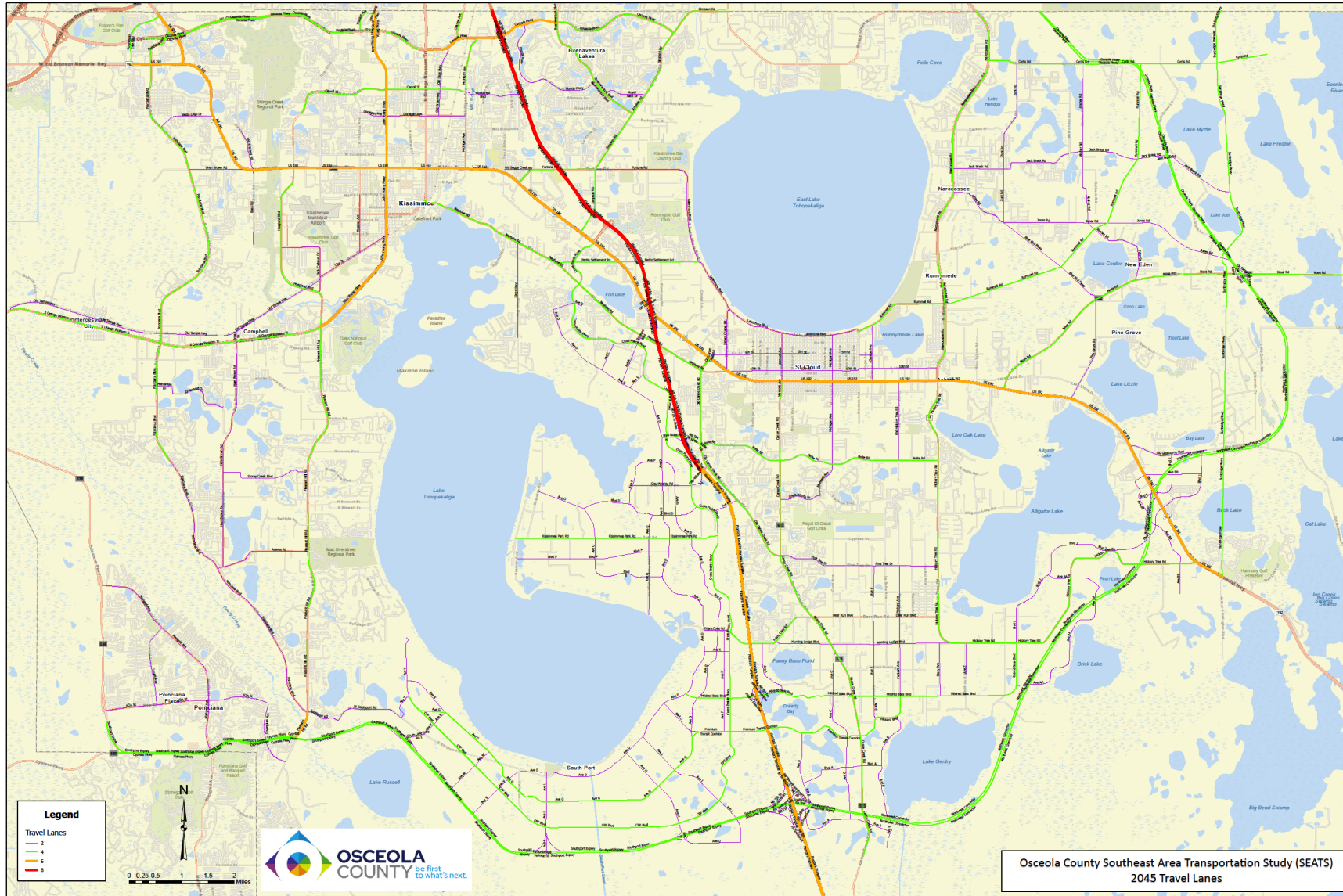
## Southeast Area Transportation Study – SEATS





# SEATS Roadway Phasing Plan 2045 Map

## Southeast Area Transportation Study – SEATS





# Next Steps

## What happens next

- Compile and summarize comments from the Community Open House for consideration.
- Finalize the SEATS analysis and related Phasing Plan.
- Present to the Osceola County Board of County Commissioners (Planned for April 17<sup>th</sup>).
- Present to the City of St. Cloud City Council (Planned for April 27<sup>th</sup>).
- Coordinate with the 12 developers to draft Agreements addressing how each will contribute to the needed improvements to offset their development's impacts on future traffic.
- Continue coordinating with the City of St. Cloud for the JPA Transportation Implementation activities.

**Be first to what's next.**



**Steven Kane, P.E.**  
**Transportation & Transit Director**  
**Transportation and Transit**  
**Osceola County Government**

**1 Courthouse Square, Suite 3100**  
**Kissimmee, FL 34741**

**407-742-0513**  
**[Steven.Kane@osceola.org](mailto:Steven.Kane@osceola.org)**

**Be first to what's next.**



**Joshua DeVries, AICP**  
**Director of Transportation Planning**  
**Transportation and Transit**  
**Osceola County Government**

**1 Courthouse Square, Suite 3100**  
**Kissimmee, FL 34741**

**407-742-7813**  
**[Joshua.DeVries@osceola.org](mailto:Joshua.DeVries@osceola.org)**





Thank you for your time.



be first  
to what's next.