



Osceola Transportation

Southeast Area Transportation Study – SEATS

Board of County Commissioners
Presentation: April 17, 2023

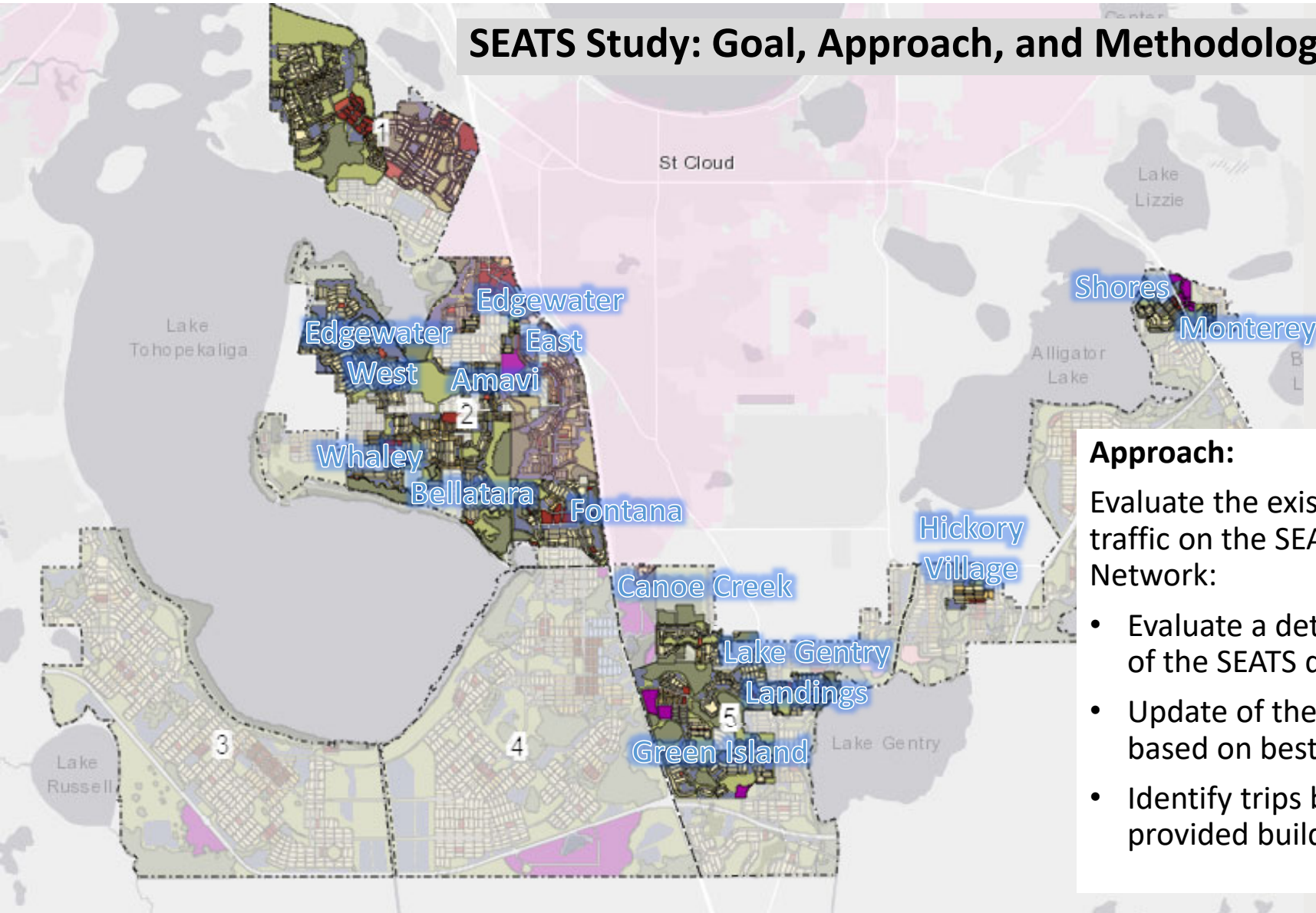


More About SEATS



- Evaluate transportation network
- Identify impact to the network
- Identify number of lanes needed
- Identify timing and phasing of needed improvements
- Impact on specific roadway segments

SEATS Study: Goal, Approach, and Methodology



Approach:

Evaluate the existing and projected traffic on the SEATS Roadway Network:

- Evaluate a detailed 2045 buildout of the SEATS developments
- Update of the roadway network based on best available data
- Identify trips based on developer provided buildout data



SEATS Traffic Volumes (Sample Corridor)

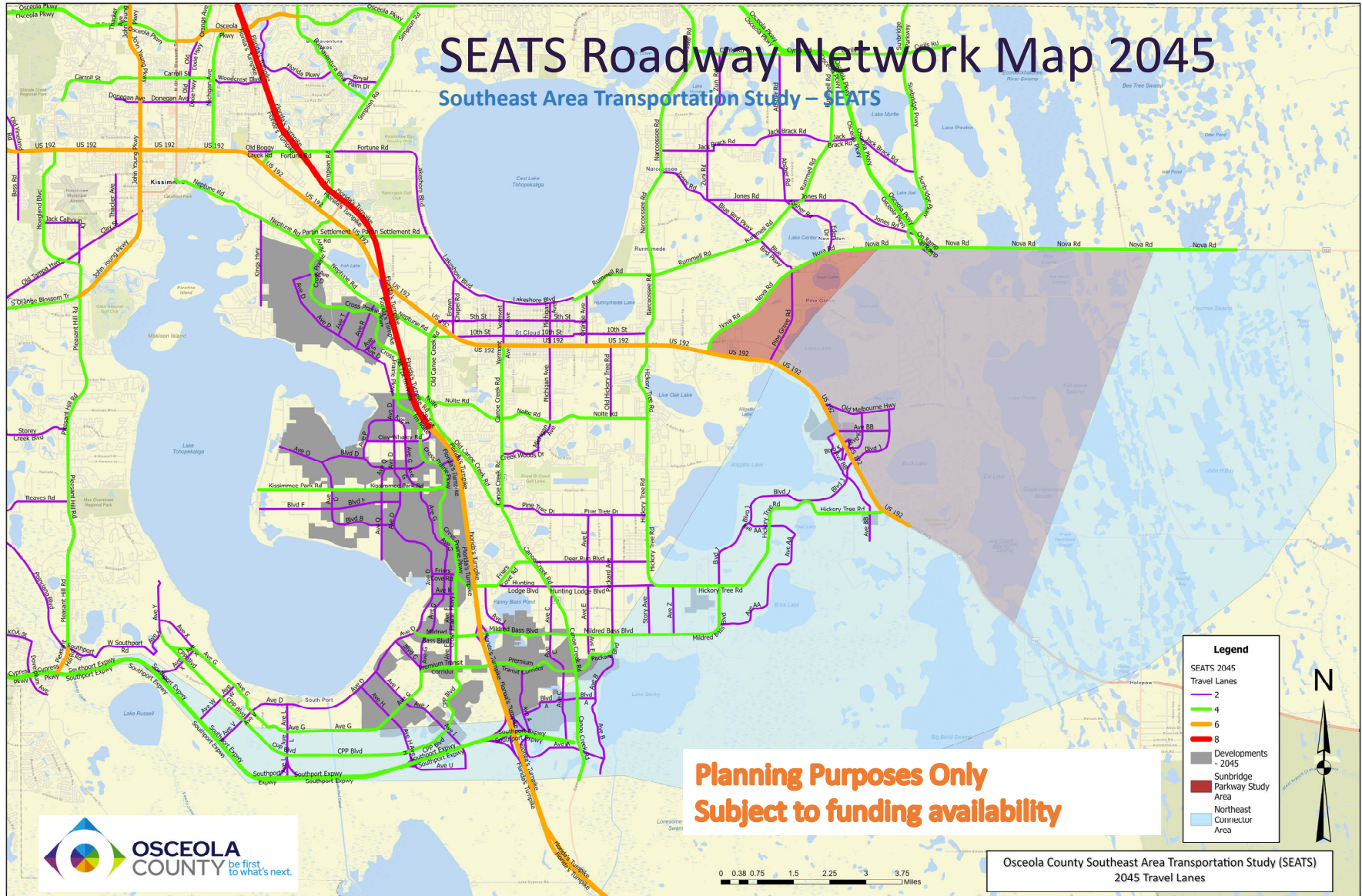
Southeast Area Transportation Study – SEATS

<u>Segment</u>	<u>Current No. of Lanes</u>	<u>2045 No. of Lanes</u>	<u>TRIPS</u>			
			<u>Current Traffic</u>	<u>Other Development Traffic</u>	<u>Development Traffic</u>	<u>Total Volume</u>
Kissimmee Park Road						
End of Roadway to Ave O	2	4	1,254	6,023	996	8,273
Ave O to Ave Q	2	4	2,513	8,105	6,012	16,630
Ave Q to Ave D	2	4	2,513	10,779	7,479	20,771
Ave D to Ave G	2	4	2,513	19,642	18,387	40,542
Ave G to Cross Prairie Pkwy	2	4	2,513	20,726	19,785	43,024



SEATS Roadway Network Map 2045

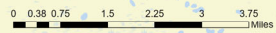
Southeast Area Transportation Study – SEATS



Legend

- SEATS 2045 Travel Lanes
 - 2 (Purple)
 - 4 (Green)
 - 6 (Orange)
 - 8 (Red)
- Developments - 2045 (Grey)
- Sunbridge Parkway Study Area (Dark Red)
- Northeast Connector Area (Light Blue)

Planning Purposes Only
Subject to funding availability



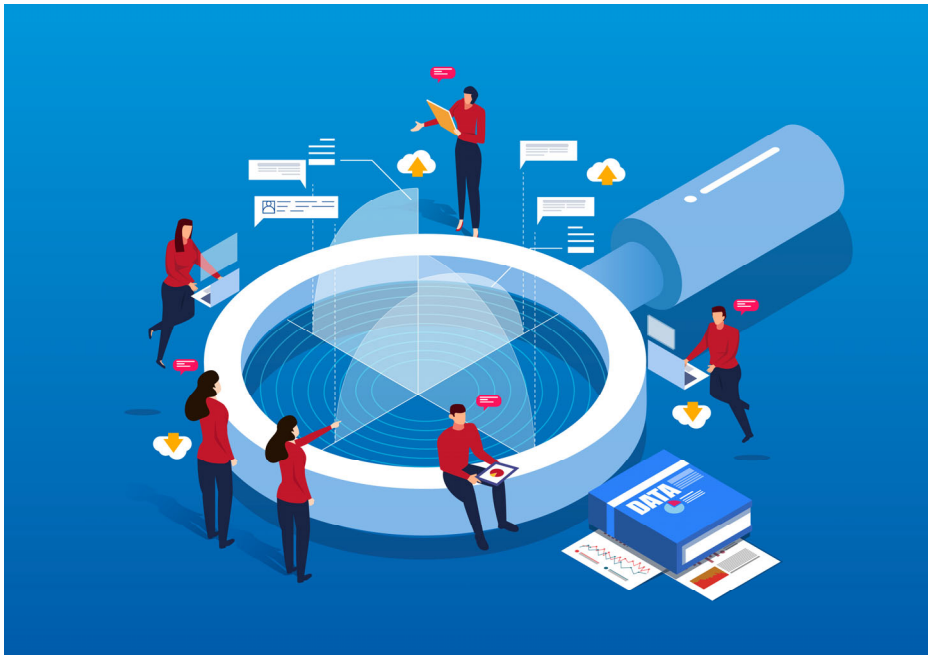
Osceola County Southeast Area Transportation Study (SEATS)
 2045 Travel Lanes





SEATS Roadway Phasing Plans

Background



Goal:

Understand roadway improvement priorities.

Approach:

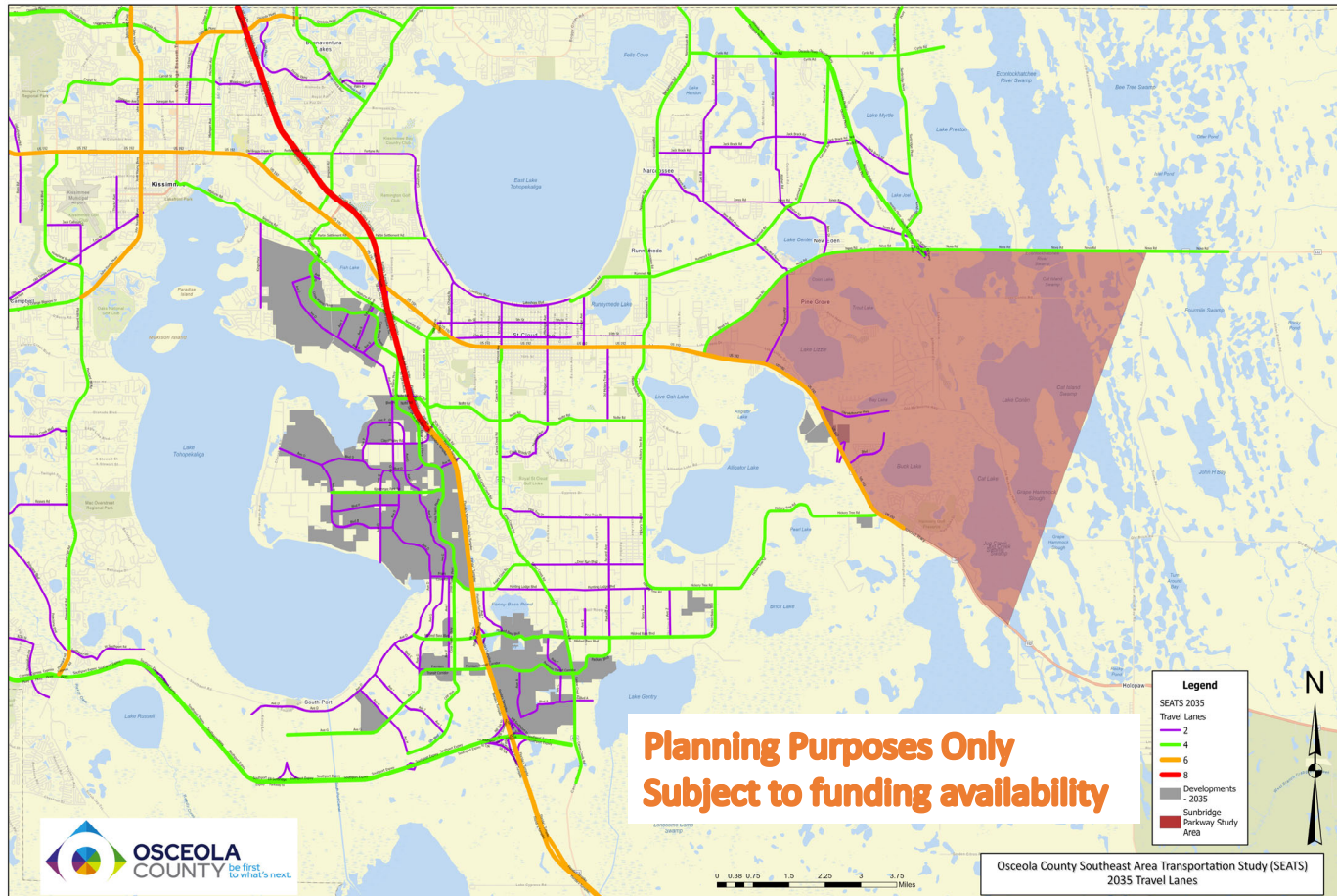
Evaluate the roadway segment needs for five-year intervals based on the:

- Detailed buildout/phasing plans of the SEATS developments.
- Estimated roadway segment traffic operations (i.e. Level of Service, volume to capacity ratio).
- Expected travel patterns.



SEATS Roadway Phasing Plan 2035 Map

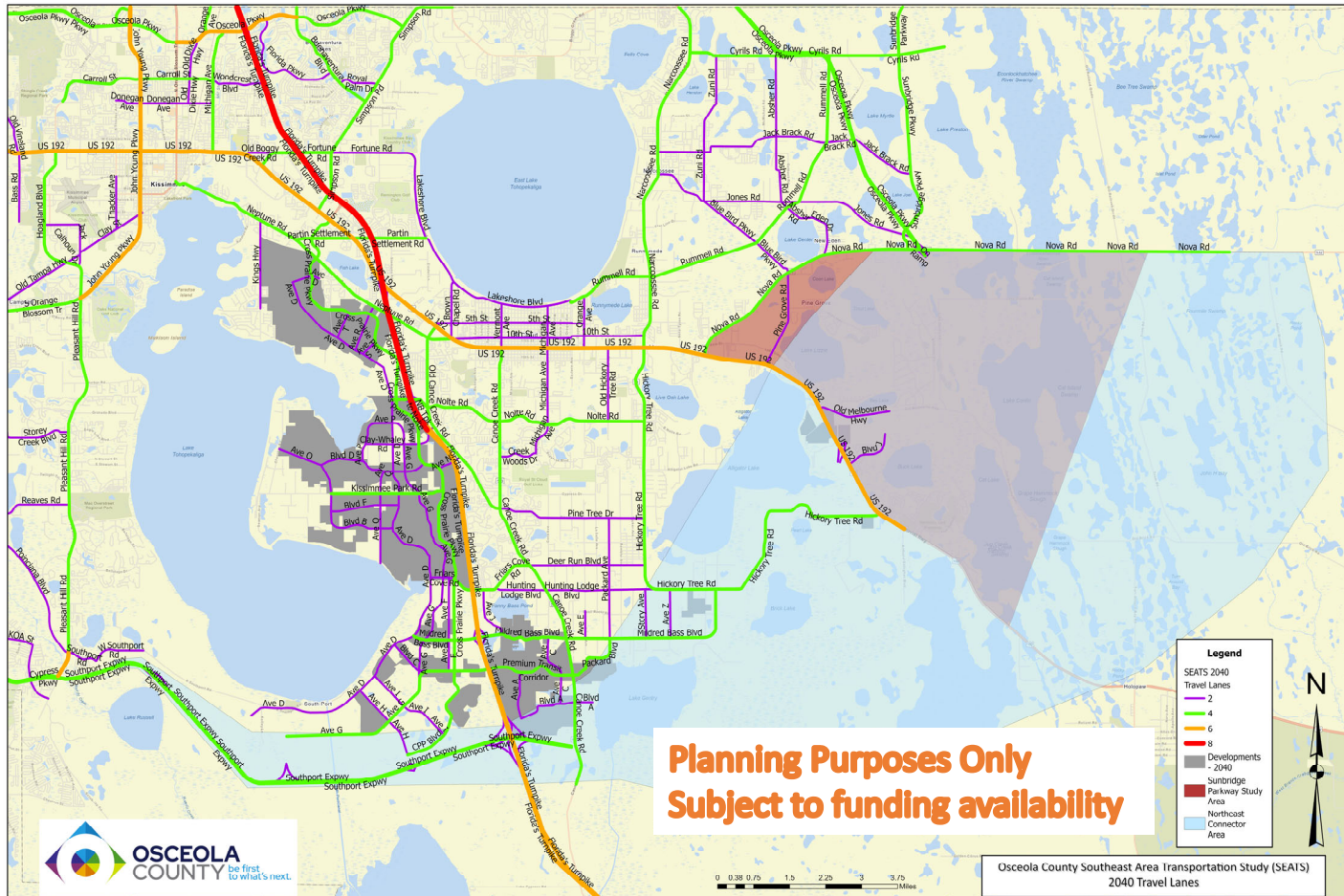
Southeast Area Transportation Study – SEATS





SEATS Roadway Phasing Plan 2040 Map

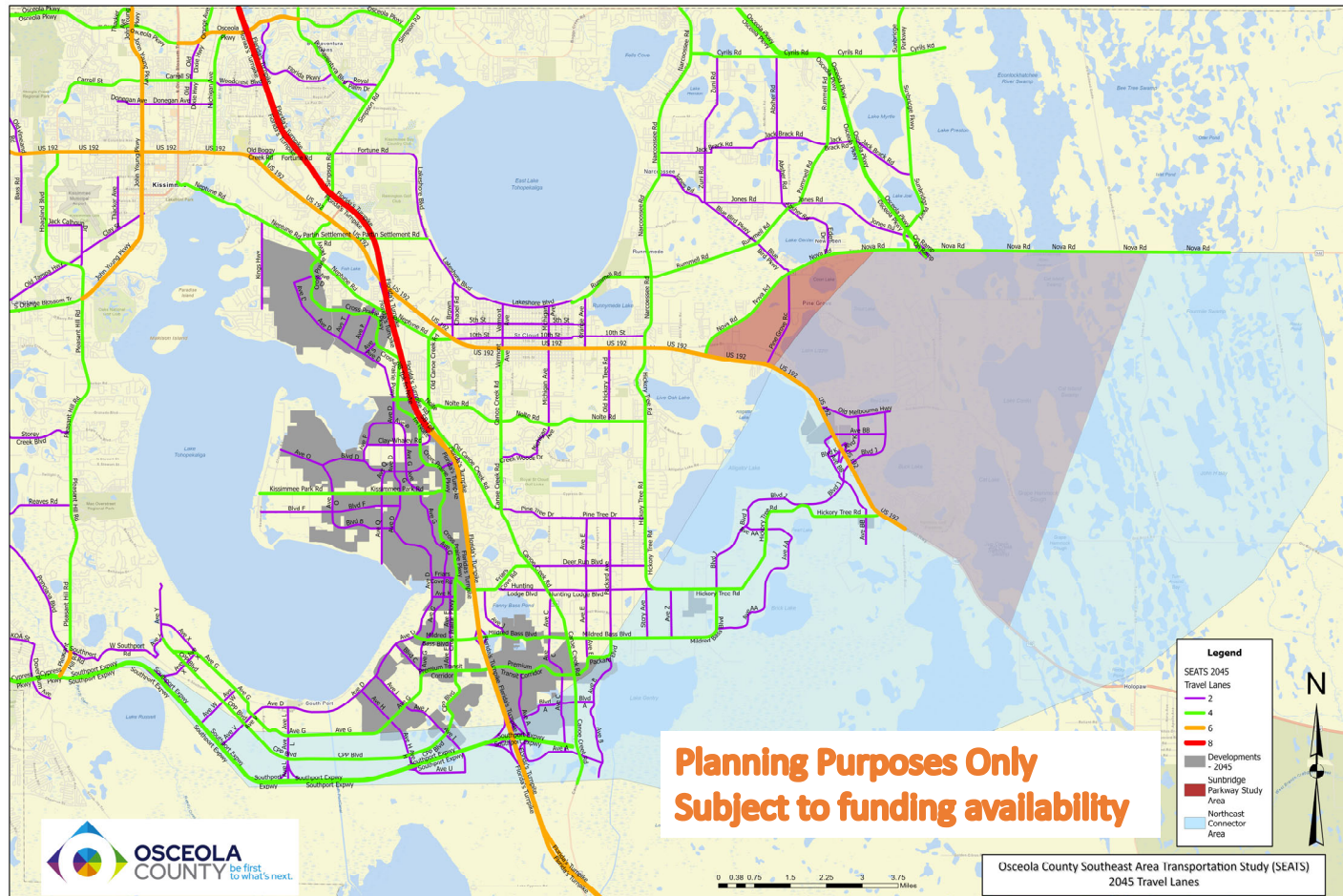
Southeast Area Transportation Study – SEATS





SEATS Roadway Phasing Plan 2045 Map

Southeast Area Transportation Study – SEATS



A map of Osceola County and the City of St. Cloud, Florida, highlighting transportation implementation areas. The map shows various lakes, including Lake Tohopekaliga, Lake Myrtle, Lake Center, Lake Gentry, and Lake Russell, as well as golf courses like Remington Golf Club and Oaks National Golf Club. Major roads like Florida's Turnpike and South Port are also visible. The text 'OSCEOLA' is in the top right corner.

JPA Transportation Implementation

Osceola County & City of St. Cloud

Joint Planning Area Transportation Implementation (JPA-TI) Activities:

- Initial Roadway Maintenance Transfer
- JPA Transportation Inter-Local Agreement (ILA)
- Future Roadway Maintenance Transfer
- Initial Roadway Build-Out Coordination
- Joint Mobility Fee Study Update



Public Involvement

Osceola County & City of St. Cloud

Open House Summary:

- Community Open House held March 22, 2023
- More than 50 people attended
- Nine comments submitted in writing





Summary of Comments

Osceola County & City of St. Cloud



Open House Comment Summary

- Other modes of transportation (Light Rail/Bus lanes) to reduce traffic congestion
- Funding for other feeder roads?
- Any displacement of property owners
- Wants to keep the serenity and beauty of area, more roadways = more noise & chemical pollution



Summary of Comments

Osceola County & City of St. Cloud

Open House Comment Summary Continued:

- Why is so much growth being allowed? / Should be a moratorium on new development
- Prioritize expansion of Turnpike/additional interchanges
- Stop building sidewalks to nowhere / Need more lighting for sidewalks
- No more toll roads
- Why not open Friars Cove to public to help reduce congestion



- Consider public comments
- Finalize SEATS analysis and related Phasing Plan
- Present to St. Cloud City Council
(Planned for May)
- Coordinate developer agreements
- Coordinate with St. Cloud on the JPA-TI



**WHAT'S
NEXT?**



For More Information

Joshua DeVries, AICP, Director
Transportation Planning
Osceola County
Transportation and Transit
1 Courthouse Square, Suite 3100
Kissimmee, FL 34741
407-742-7813
Joshua.DeVries@Osceola.org

Steven Kane, P.E., Director
Osceola County
Transportation and Transit
1 Courthouse Square, Suite 3100
Kissimmee, FL 34741
407-742-0513
Steven.Kane@Osceola.org



Thank you,
Staff is Available for
Questions.