

Annual Report for the East U.S. 192 CRA Fiscal Year 2013



Prepared for
East U.S. 192 Community Redevelopment Agency
& Board of County Commissioners

Prepared by
Osceola County Department of Community Development
March 11, 2014

TABLE OF CONTENTS

TABLE OF CONTENTS.....	1
COMMUNITY REDEVELOPMENT AGENCY (CRA) BOARD MEMBERS	2
CRA / COUNTY STAFF CONTACT INFORMATION	2
INTRODUCTION.....	3
END OF THE YEAR FINANCIAL REPORTING INFORMATION	3
END OF THE YEAR FINANCIAL FORECASTING INFORMATION	3
FY2012 Construction Projects (Exhibit A)	3
CODE ENFORCEMENT ACTIVITY.....	5
JOBS CREATED IN THE CRA	5
Census Tract 429 / East U.S. 192 CRA Employment (Exhibit G).....	5
Figure 1.1 Un-Employment Rates	5
ACTION STEPS.....	6
Proposed design for the Turnpike Interchange (Exhibit B).....	8
Future Land Use Map Amendment CPA13-0001 (Exhibit C)	9
Zoning Map Amendment ZMA13-0001 (Exhibit D).....	9
Lake Toho Restoration Initiative (Exhibit E)	10
Osceola Heritage Park Improvements (Exhibit F)	11
Attachment 1: Letter of Support from BCC Chairman.....	13
Attachment 2: Proposed Landscape Construction Plans	14

COMMUNITY REDEVELOPMENT AGENCY (CRA) BOARD MEMBERS

Commissioner Michael E. Harford



**Commissioner John "Q" Quiñones
(Vice Chairman)**



Commissioner Brandon Arrington



Commissioner Frank Attkisson



**Commissioner Fred Hawkins, Jr.
(Chairman)**



The CRA, at their June 04, 2012 Board Meeting, voted that the Chairman/Vice-Chairman will run parallel with the elections for the Board of County Commissioners Chairman/Vice-Chairman.

CRA / COUNTY STAFF CONTACT INFORMATION

Osceola County Planning & Zoning Department, 1 Courthouse Square, Suite 1100, Kissimmee, Florida 34741, 407-742-0200; fax number at 407-742-0206.

INTRODUCTION

Osceola County created its first Community Redevelopment Area (CRA) in 2012, taking the steps necessary to create the redevelopment district through the Finding of Necessity (Resolution #12-004R, January 9, 2012), establishing the boundary and governing body (Resolution #12-025R, April 9, 2012), approving the Redevelopment Plan (Resolution #12-044R, June 18, 2012), and creating the Trust Fund (Ordinance #12-15, June 18, 2012). The CRA Board was given an overview of the first Annual Report on February 11, 2013. The CRA's first Annual report was then completed and filed with the governing body, (County Manager) on March 28, 2013. That report covered the period between approval of the Redevelopment Plan and creation of the Trust Fund on June 18, 2012 through the end of the Fiscal Year September 30, 2012. This report covers the subsequent Fiscal year between October 1, 2012 and September 30, 2013.

END OF THE YEAR FINANCIAL REPORTING INFORMATION

The CRA was created in 2012, and pursuant to the annual reporting criteria in Sec. 163.356(3)(c), Florida Statutes, at the end of the County's fiscal year ending September 30, 2013, there are zero assets, liabilities, or income to report. During this reporting period, there was no budget adopted, and the operating expenses had been absorbed by the County's general funds and the Planning and Zoning budget. These operating expenses thus far have consisted of only the Special District Recording Fee of \$175.

END OF THE YEAR FINANCIAL FORECASTING INFORMATION

For the County's fiscal year ending September 30, 2014, there is an adopted budget of \$42,528, which will be adjusted to \$44,125. This adjustment will be based on the Dedicated Increment Value reported on the Florida Department of Revenue form DR-422 multiplied by our 2013 Millage Rate of 6.7000.

The increase in the Tax increment from 2012 is due mainly to a change in market conditions; however there are four parcels that had new construction on the tax rolls in 2013. This totaled approximately 90,000 square feet of new construction, increasing the taxable value for 2013 by approximately \$5.9 Million compared to the 2012 certified values for those parcels. This is however, not taking into account any potential change in land value for those parcels during the same time period. This increase in Taxable Value will be realized in the next reporting period ending September 30, 2014.

FY2012 Construction Projects (Exhibit A)

- During FY2012, approximately 90,000 square feet of new construction including:
 - Publix Shopping Center, 71,189 sq. ft.;
 - Wendy's, 3,772 sq. ft.;
 - WaWa, 6,396 sq. ft.; and
 - Family Dollar, 8,646 sq. ft.

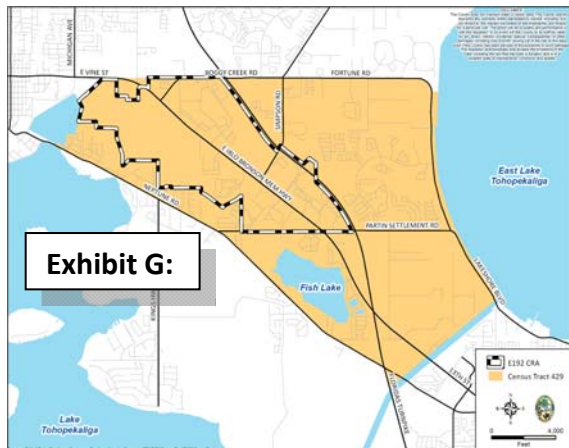


CODE ENFORCEMENT ACTIVITY

Code Enforcement Activities have been tracked within the CRA Boundary for FY2013 in order to establish a baseline to measure improvements over time. There were 93 code enforcement cases. These violations are primarily lot mow violations; however also range from junk and trash, un-authorized outdoor storage, illegal signage, minimum maintenance violations, and operating without a Business Tax Receipt. As of the date of this report, 84 have been closed.

JOBS CREATED IN THE CRA

Census Tract 429 / East U.S. 192 CRA Employment (Exhibit G)

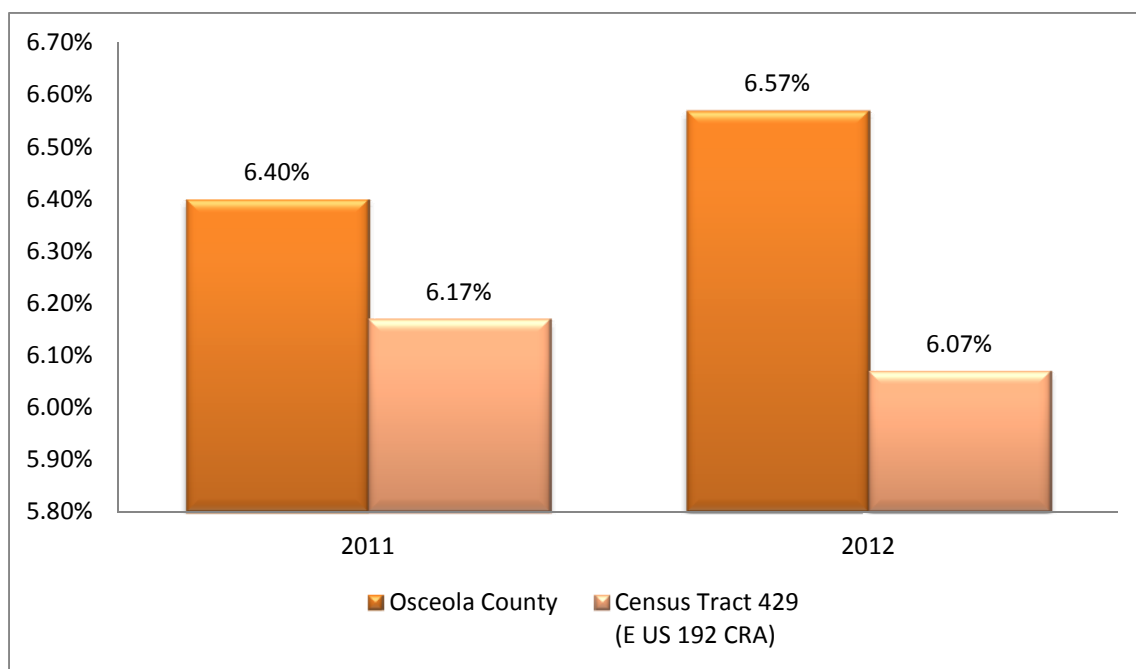


According to the U.S. Census Bureau, American Fact Finder, there were an estimated 168 jobs created within Census Tract 429 (Exhibit G) between 2011 and 2012.

Estimates for 2013 were not available at time of this report, however by estimating 1 job per 250 sq ft of commercial, staff was able to estimate that the additional 90,000 sq ft of commercial would equate to approximately 360 new jobs for 2013. Estimates from the past two years equate to approximately 528 total new jobs within the CRA.

Comparisons of the estimated un-employment rates from the American Fact Finder website are outlined below.

Figure 1.1 Un-Employment Rates



ACTION STEPS

Continuing into its second year, the East U.S. 192 CRA has continued taking a look at the short term (Years 1-5) activities outlined in the Redevelopment Plan. To date, the County has started work on a number of projects envisioned in the Redevelopment Plan. Funding for these projects is currently provided by the General Fund of Osceola County, the Tourist Development Tax (TDT) Fund, and in partnership with other agencies. These projects illustrated below consist of the following:

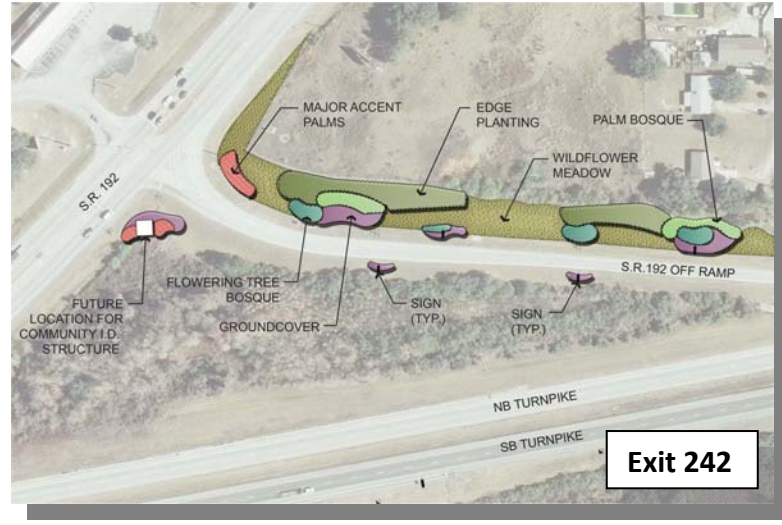
- ✚ Florida Turnpike Interchange Landscape Improvements
 - In 2012 Osceola County began working with their consultant to design landscape improvements for the two Turnpike Interchanges along U.S. 192 so as to create a sense of arrival for people coming into the area from the Turnpike. What resulted for exits 242 and 244 was a comprehensive landscape enhancement project that would total approximately \$3 Million if constructed.
 - In early 2013, discussions started with the Florida Turnpike Enterprise (FTE) and their consultants to determine potential funding strategies. FTE originally had \$250,000 funded to do typical interchange landscape improvements, however because the County had requested enhanced landscape design for the CRA, FTE doubled that amount to \$500,000 to cover the enhancements. FTE has also made this a priority project with construction estimated to begin in FY2014.
- ✚ Future Land Use and Zoning Map Amendments,
 - Ordinance #13-07 and #13-08 were adopted on May 20, 2013, and became effective 31 days after adoption. The goal of these amendments was to increase the density and intensity within the area.
- ✚ Lake Toho Restoration Initiative,
 - On May 8, 2013 Toho Water Authority (TWA) entered into an inter-local agreement with Osceola County to acquire a portion of the Judge Farms property to develop a stormwater treatment and water storage impoundment to initially provide a supplemental source of reclaimed water for future development. According to TWA the Water Use Permit application process has been initiated and a second permit for the reservoir construction is necessary.
- ✚ Osceola Heritage Park Improvements.
 - Multi-purpose Building constructed to accommodate climate controlled office, storage, and is used for memorabilia display during the Mecum Auto Auction. (\$1,303,234.30 TDT Fund)
 - Concrete Pad constructed December 2013, primarily for use by the Mecum Auto Auction as a pre-staging/display area for collector cars to be auctioned. (\$374,362 TDT Fund)

- Basketball Courts were purchased for OHP to be utilized in the Arena and Exhibition Hall for Basketball Tournaments. (\$581,990 TDT Fund)
- Ride-On Scrubbers were purchased for maintaining the floors at OHP. (\$58,671.51 TDT Fund)
- Accessibility to Arena Floor was a project within the Arena which allows patrons to come down from the stands onto the floor without exiting to lobby. (\$65,436.03 TDT Fund)



Proposed design for the Turnpike Interchange (Exhibit B)

- Attachment 1: Letter of Support from BCC Chairman (provided at end of document).
- Attachment 2: Proposed Landscape Construction Plans (provided at end of document).



Proposed Turnpike Landscape Material



Silver Bismark



Crape Myrtle



Medjool Date Palm



Wild Date Palm



Senegal Date Palm



Puerto Rican Hat Palm

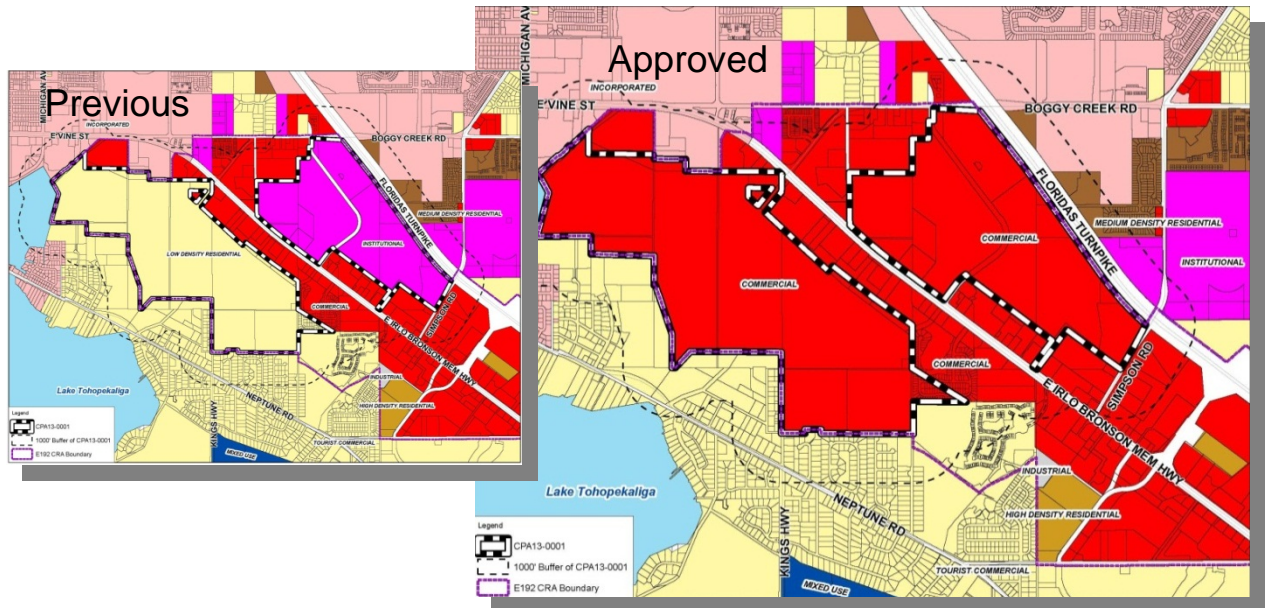


Sabal Palm

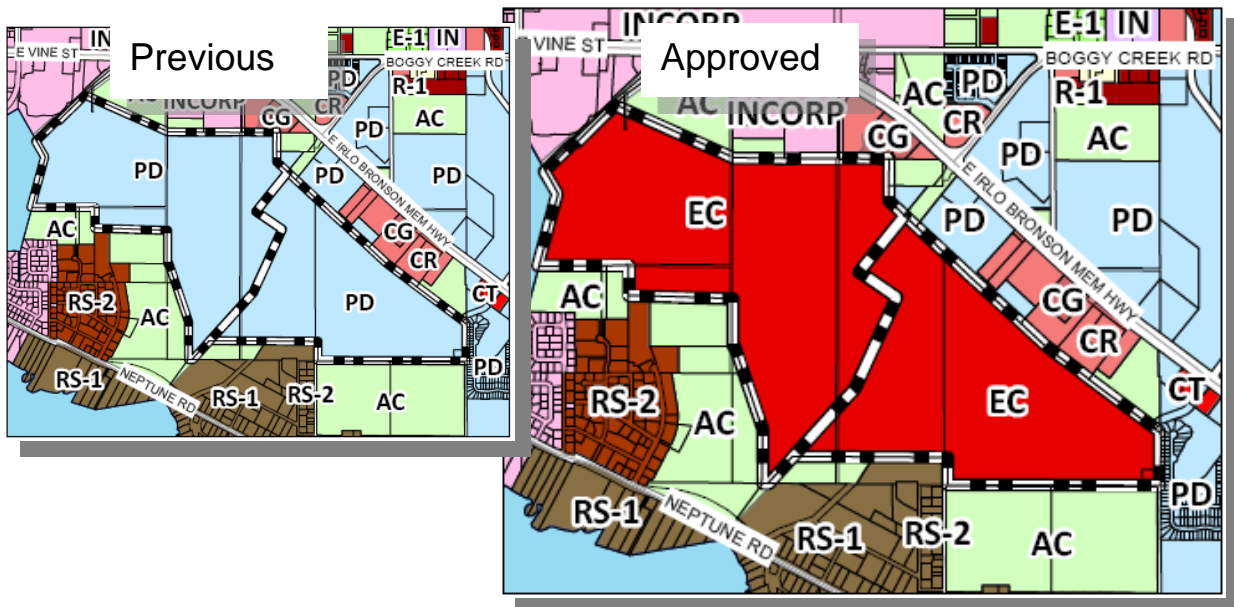


Butterfly Bush

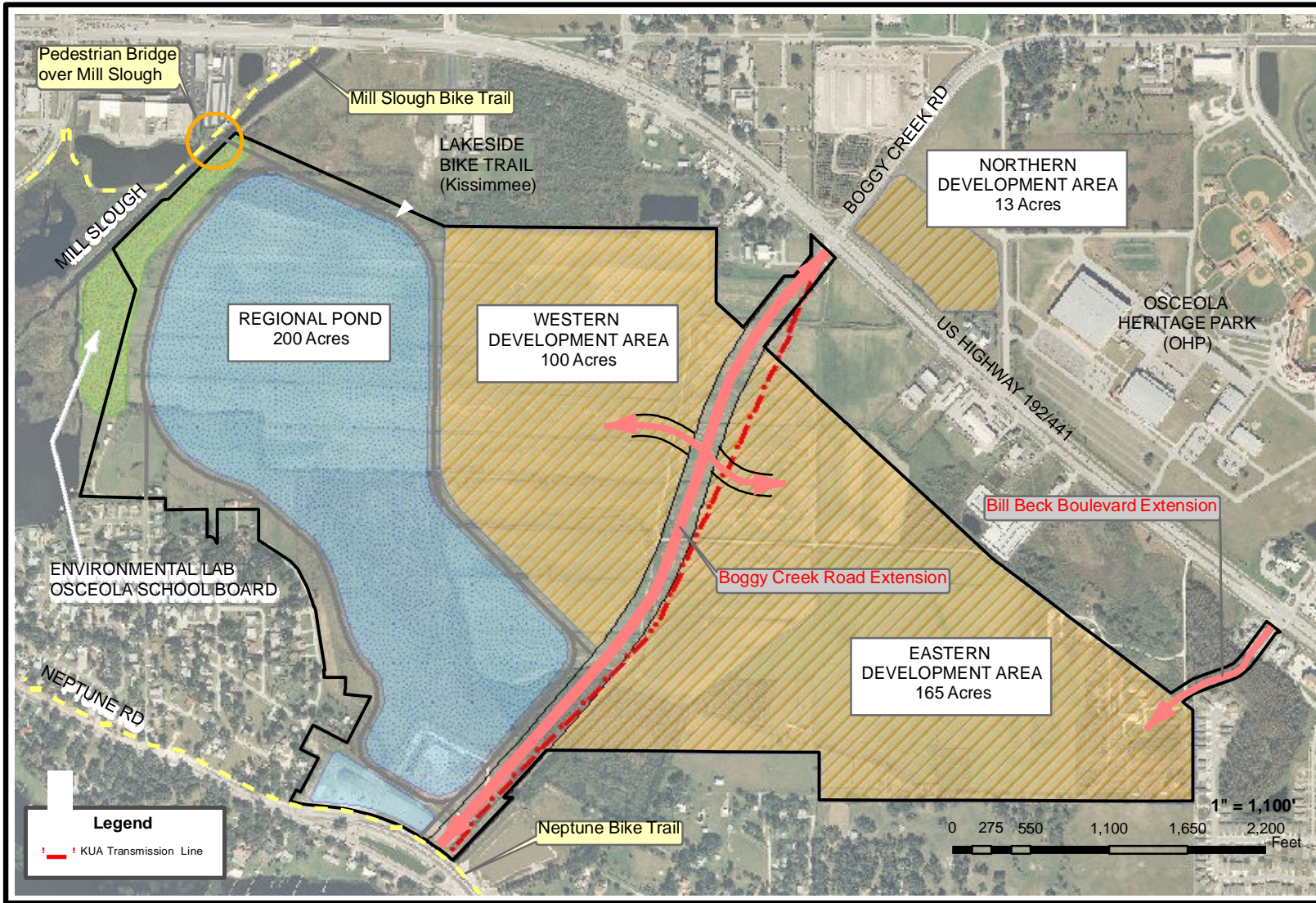
Future Land Use Map Amendment CPA13-0001 (Exhibit C)



Zoning Map Amendment ZMA13-0001 (Exhibit D)



LAKE TOHO RESTORATION INITIATIVE

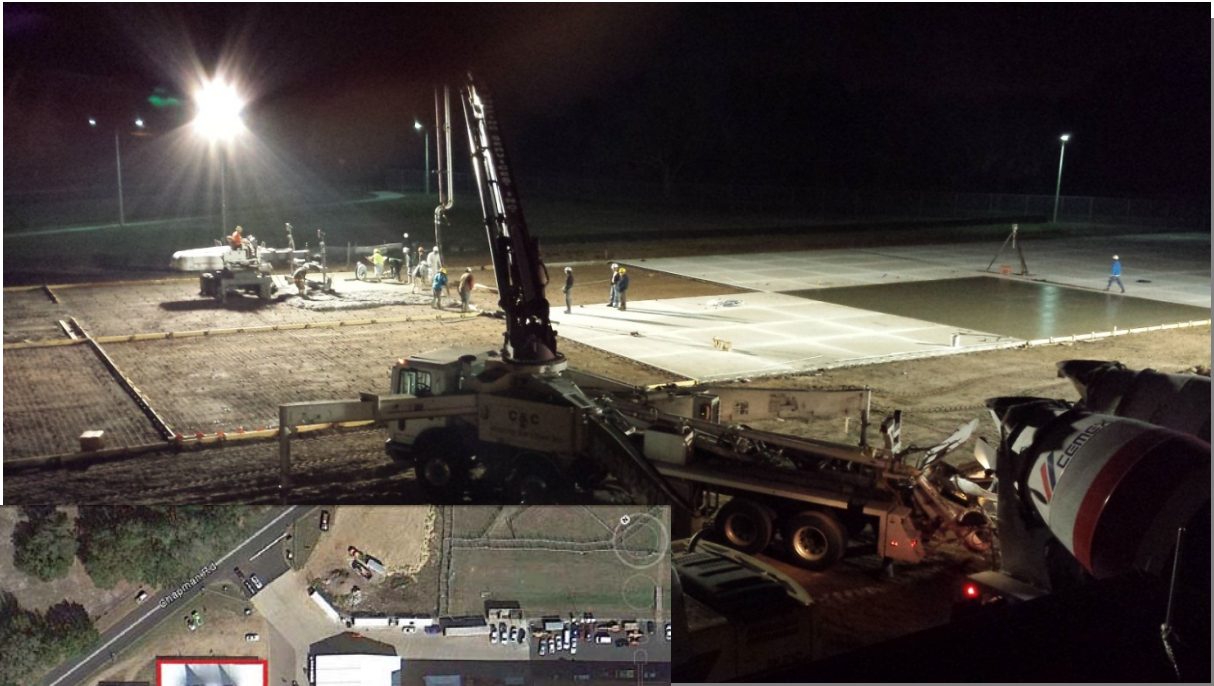


FEATURES

- o 400,000,000 Gallons Reuse Water Capacity
- o Nutrient Reduction
 - 34,000 TPY Nitrogen
 - 3,650 TPY Phosphorus
- o Economic Development (278 Acres)
- o US 192 Congestion Relief
- o 2.3 Mile Lakeside Pedestrian/Bike Trail
- o Environmental Wetland Laboratory

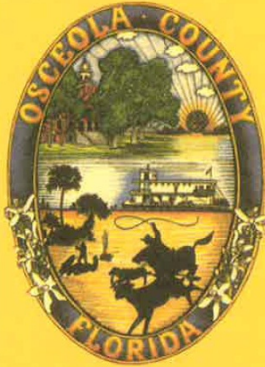
Graphic provided by Osceola County Public Works 03/2013– Final pond design to be determined

Osceola Heritage Park Improvements (Exhibit F)





ATTACHMENT 1: LETTER OF SUPPORT FROM BCC CHAIRMAN



**BOARD
OF
COUNTY
COMMISSIONERS**

*Commissioner
Frank Attkisson*

*County Commission
District Four*

*1 Courthouse Square
Suite 4700
Kissimmee, FL 34741
407-742-2383
407-742-2391/fax*

**Osceola
County**

August 6, 2013

Ms. Diane Scaccetti
Executive Director and Chief Executive Officer
Florida's Turnpike Enterprise
PO Box 613069
Ocoee, FL 34761

**RE: Enhancement of Turnpike Exits 242 and 244 along the US 192 Corridor
within Osceola County**

Dear Ms. Scaccetti,

The Osceola County Board of County Commissioners (BCC) is pleased to hear of the Florida Turnpike Enterprise's commitment to landscape improvements on the Florida Turnpike exit 244 along the US 192 Corridor in Osceola County. As we understand approximately \$500,000.00 in funds have been dedicated to this project, with the goal to have plans production scheduled for December 2013, and to let these projects by March of 2014.

Osceola County supports this project committedly and would be enthusiastic to be involved in the process to improve this exit, which we feel is integral to the revitalization of our East US 192 corridor and which would lend support to our Community Redevelopment Areas. With the improvement of this whole corridor as a priority for the County, we submit that not only would exit 244 benefit from these improvements, but that exit 242 would also prove a great investment. We would be grateful for the opportunity to discuss this option, and other future corridor improvements that the County aims to achieve in this area.

Thank for your time and please let me know how Osceola County can assist the Florida Turnpike Enterprise with your approved work plan for Exit 244 improvements, and the potential for improvements to exit 242 and the East US 192 corridor.

Sincerely,

Frank Attkisson
Chairman, Osceola County Board of County Commissioners

CC: Beth Knight, Osceola County, Deputy County Manager (*via email*)
David F. Tomek, Osceola County, Community Development Administrator (*via email*)
Kerry Godwin, Osceola County, Planning and Zoning Director (*via email*)
Osceola County Planning & Zoning Project Files



ATTACHMENT 2: PROPOSED LANDSCAPE CONSTRUCTION PLANS

STATE OF FLORIDA
DEPARTMENT OF TRANSPORTATION

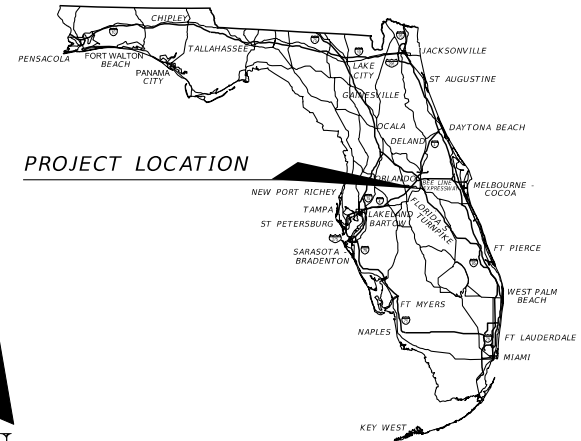
CONTRACT PLANS

FINANCIAL PROJECT ID 433915-2-52-01

OSCEOLA COUNTY (92471)

STATE ROAD NO. 91

LANDSCAPE PLANS



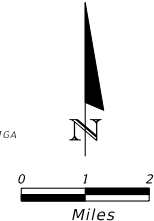
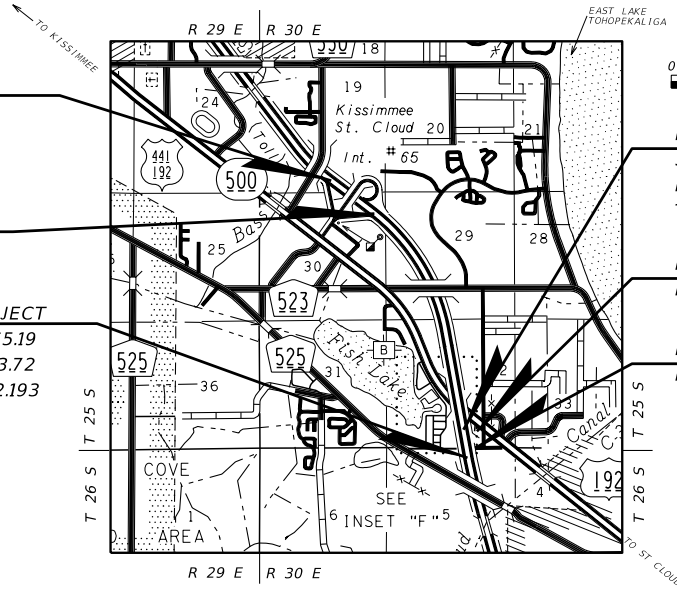
INDEX OF LANDSCAPE PLANS

SHEET NO.	SHEET DESCRIPTION
LD-1	KEY SHEET
LD-2	TABULATION OF QUANTITIES / PLANT SCHEDULE
LD-3	LANDSCAPE GENERAL NOTES
LD-4	LANDSCAPE DETAILS
LD-5	PLAN LAYOUT
LD-6 THRU LD-12	LANDSCAPE PLAN
LD-13	STORMWATER POLLUTION PREVENTION NOTES
LD-14	TRAFFIC CONTROL NOTES
LD-15	LANDSCAPE MAINTENANCE PLAN

END PROJECT
END LANDSCAPE
STA. 4800+00
MP. 36.169
TPK 244.106

BEGIN LANDSCAPE
END EXCEPTION
STA. 4785+60
MP. 35.916
TPK 243.86

BEGIN PROJECT
STA. 4670+65.19
MP. 33.72
TPK 242.193



BEGIN EXCEPTION
STA. 4685+53.56
MP. 34.003
TPK. 242.464

END LANDSCAPE
NB RAMP STA. 120+65

BEGIN LANDSCAPE
NB RAMP STA. 110+00

LANDSCAPE SHOP DRAWINGS
TO BE SUBMITTED TO:

John P. Gorham, RLA
MILLER LEGG
631 South Orlando Avenue
Suite 200
Winter Park, FL 32789

PLANS PREPARED BY:

MILLER LEGG

631 South Orlando Avenue, Suite 200 - Winter Park, FL 32789
407-629-8880 · Fax: 407-278-1264 · www.millerlegg.com
Contract No.: C-9829 · Vendor: 65-0563467
Certification of Authorization: LC0000337

NOTE: THE SCALE OF THESE PLANS MAY
HAVE CHANGED DUE TO REPRODUCTION.

GOVERNING STANDARDS AND SPECIFICATIONS:
Florida Department of Transportation, 2014 Design Standards and revised Index Drawings as appended herein, and 2014 Standard Specifications for Road and Bridge Construction, as amended by Contract Documents.

For Design Standards click on the "Design Standards" link at the following web site:
<http://www.dot.state.fl.us/rddesign/>

For the Standard Specifications for Road and Bridge Construction click on the "Specifications" link at the following web site:
<http://www.dot.state.fl.us/specificationsoffice/>

REVISIONS:

PROJECT LENGTH IS BASED ON E OF CONSTRUCTION (NORTHBOUND)

LENGTH OF PROJECT		
	LINEAR FEET	MILES
ROADWAY	2,766.72	.52
BRIDGES		
NET LENGTH OF PROJECT	2,766.72	.52
EXCEPTIONS	10,100.64	1.91
GROSS LENGTH OF PROJECT	12,867.36	2.44

KEY SHEET REVISIONS

DATE	DESCRIPTION

LANDSCAPE PLANS
ARCHITECT OF RECORD: JOHN P. GORHAM

R.L.A. NO.: 1237

FISCAL YEAR	SHEET NO.
14	LD-1

FTE PROJECT MANAGER: WILLIAM F. SLOUP, PE
GEC PROJECT MANAGER: CHRISTOPHER KELLER, RLA

TABULATION OF QUANTITIES / PLANT SCHEDULE

PAY ITEM NO.	PAY SIZE	SYM	BOTANICAL NAME	COMMON NAME	INSTALLED SIZE	MAXIMUM MAINTAINED SIZE	SPACING	REMARKS	UNIT	SHEET NUMBERS								TOTAL THIS SHEET			
										LD-6		LD-7		LD-8		LD-9		PLAN	FINAL	PLAN	FINAL
										PLAN	FINAL	PLAN	FINAL	PLAN	FINAL	PLAN	FINAL				
580-1-2		BN	Bismarckia nobilis 'Silver'	Silver Bismark Palm	8' ct	Natural Form	24' o.c.	RR: 4' X 5'	EA										15		
580-1-2		JM	Jacaranda mimosifolia	Jacaranda	3"c.14'ht.x6' spr.	Natural Form	As Shown	FF, BR, RP & DF	EA	3		4							7		
580-1-2		LIT	Lagerstroemia indica 'Tuscarora'	Tuscarora Crape Myrtle	12'-14' o.a.	Natural Form	20' o.c.	Multi-trunk, FF & RP	EA	5		5			13				36		
580-1-2		PD	Phoenix dactylifera 'Medjool'	Medjool Date Palm	18'-20' c.t.	Natural Form	24' o.c.	RR: 5' X 6', HP	EA							13					
580-1-2		PR	Phoenix reclinata	Senegal Date Palm	16' o.a.	Natural Form	35' o.c.	7 T at 14' o.a., RR: 4' X 5'	EA								7		17		
580-1-2		PS	Phoenix sylvestris	Wild Date Palm	8', 12', 16' c.t.	Natural Form	As Shown	RR: 4' X 5', HP	EA	3		8							33		
580-1-2		SC	Sabal causerium	Puerto Rican Hat Palm	10',14',18' c.t.	Natural Form	15' o.c.	RR: 4' X 5', HP	EA			3							3		
580-1-2		SP	Sabal palmetto	Cabbage/Sabal Palm	10',14',18' c.t.	Natural Form	15' o.c.	RR: 3' X 4', HP	EA												
580-1-2		SB	Senna bicapsularis	Cassia	15 gal., 6' o.a.	10'x15'	As Shown	FF,DF & RP	EA	7		34							41		

PAY ITEM NO.	PAY SIZE	SYM	BOTANICAL NAME	COMMON NAME	INSTALLED SIZE	MAXIMUM MAINTAINED SIZE	SPACING	REMARKS	UNIT	SHEET NUMBERS								TOTAL THIS SHEET		FINAL THIS SHEET		
										LD-10		LD-11		LD-12		PLAN	FINAL	PLAN	FINAL		PLAN	FINAL
										PLAN	FINAL	PLAN	FINAL	PLAN	FINAL							
580-1-2		BN	Bismarckia nobilis 'Silver'	Silver Bismark Palm	8' ct	Natural Form	24' o.c.	RR: 4' X 5'	EA										8		23	
580-1-2		JM	Jacaranda mimosifolia	Jacaranda	3"c.14'ht.x6' spr.	Natural Form	As Shown	FF, BR, RP & DF	EA	3		3							18		25	
580-1-2		LIT	Lagerstroemia indica 'Tuscarora'	Tuscarora Crape Myrtle	12'-14' o.a.	Natural Form	20' o.c.	Multi-trunk, FF & RP	EA	9		14							23		59	
580-1-2		PD	Phoenix dactylifera 'Medjool'	Medjool Date Palm	18'-20' c.t.	Natural Form	24' o.c.	RR: 5' X 6', HP	EA	2									8		8	
580-1-2		PR	Phoenix reclinata	Senegal Date Palm	16' o.a.	Natural Form	35' o.c.	7 T at 14' o.a., RR: 4' X 5'	EA			3							3		20	
580-1-2		PS	Phoenix sylvestris	Wild Date Palm	8', 12', 16' c.t.	Natural Form	As Shown	RR: 4' X 5', HP	EA			19							19		52	
580-1-2		SC	Sabal causerium	Puerto Rican Hat Palm	10',14',18' c.t.	Natural Form	15' o.c.	RR: 4' X 5', HP	EA	5									5		8	
580-1-2		SP	Sabal palmetto	Cabbage/Sabal Palm	10',14',18' c.t.	Natural Form	15' o.c.	RR: 3' X 4', HP	EA												34	
580-1-2		SB	Senna bicapsularis	Cassia	15 gal., 6' o.a.	10'x15'	As Shown	FF,DF & RP	EA			13							13		54	

PAY ITEM NO.	SYM	DESCRIPTION	SIZE/REMARKS	UNIT	SHEET NUMBERS												FINAL THIS SHEET				
					LD-6		LD-7		LD-8		LD-9		LD-10		LD-11			LD-12			
					PLAN	FINAL	PLAN	FINAL	PLAN	FINAL	PLAN	FINAL	PLAN	FINAL	PLAN	FINAL		PLAN	FINAL		
580-1-2		CLEARING AND GRUBBING	INCLUDES CONSTRUCTION PHASE ONLY	AC	.14		.53		.02		.02		.02		.13		.35				1.21
580-1-2		PREFORMANCE TURF	RESTORATION AREAS AS NOTED	SY				1,422			473		417								2,312
580-1-2		MULCH	INCLUDES CONSTRUCTION PHASE ONLY	SY	693		2576		116		115		112		633		1,691				5,936
580-1-2		SILT FENCE	SEE SWPP NOTES	LF	155		700		220		175		300		185		405				2,140
580-1-2		SYNTHETIC HAY BALES	SEE SWPP NOTES	LF			160		40		40		80								320
580-1-2		LITTER REMOVAL AND DISPOSAL	INCLUDES CONSTRUCTION PHASE ONLY	AC																	25.29
580-1-2		MOWING	INCLUDES CONSTRUCTION PHASE ONLY	AC																	4.36

PAY ITEM NOTES:
 580-1-2: INCLUDES LANDSCAPE, MOBILIZATION, CLEARING AND GRUBBING, MAINTENANCE OF TRAFFIC, EROSION CONTROL MEASURES, LITTER REMOVAL AND DISPOSAL, MOWING, IRRIGATION SYSTEM, MAINTENANCE AND ESTABLISHMENT PERIOD ACTIVITIES AS OUTLINED WITHIN NOTES AND PLANS.

* WHERE MULCH IS SPECIFIED WITH CLEARING AND GRUBBING, THE AREAS ARE EQUAL. THE MULCH IS TO COVER THE DISTURBED AREA AFTER PLANTING. OTHER AREAS OF CLEARING AND GRUBBING ARE TO STABILIZED WITH PREFORMANCE TURF.

ABBREVIATION INDEX:
 ABBREVIATION: DESCRIPTION:
 OA OVERALL HEIGHT
 CT CLEAR TRUNK
 OC ON CENTER
 GAL GALLON
 EA EACH
 AC ACRE
 C CALIPER
 SPR SPREAD
 SY SQUARE YARD
 RP ROOT PRUNED 4 WEEKS PRIOR TO HARVEST
 RR REGENERATED ROOTS ROOT BALL:
 INCLUDES ROOT PRUNING SIX (6) WEEKS PRIOR TO HARVEST AND MIN.
 SIZES PER SPECIES: WIDTH x DEPTH.
 FLORIDA FANCY

DF DENSELY FOLIATED
FF FLORIDA FANCY
FTG FULL TO GROUND
LF LINEAR FEET
HP HEIGHT AS LABELED ON PLANS
T TRUNKS
LS LUMP SUM
BR BRANCHES PRUNED TO REMOVE CO-DOMINANT LEADERS AND ALL BRANCHES ≥ HALF THE DIA. OF THE TRUNK

SUMMARY OF LITTER REMOVAL AND MOWING DURING CONSTRUCTION									
CONST. PHASE	DURATION (DAYS)	FREQUENCY (DAYS)	LITTER REMOVAL			MOWING			REMARKS
			CYCLES	AREA		CYCLES	AREA		
				AC/CYCLE	TOTAL (AC)		AC/CYCLE	TOTAL (AC)	
1	120	15	8	25.29	202.32	8	4.36	34.88	LITTER REMOVAL PRIOR TO EACH MOWING
TOTAL			PLAN	FINAL	TOTAL	PLAN	FINAL		

NOTE: LITTER REMOVAL INCLUDES ENTIRE PROJECT LIMITS, UP TO ROADWAY SHOULDERS, SEE PLAN LAYOUT / MAINTENANCE PLAN FOR PROJECT LIMITS.

REVISIONS			
DATE	DESCRIPTION	DATE	DESCRIPTION

MILLER LEGG
 631 South Orlando Ave., Suite 200 - Winter Park, Florida - 32789
 407-639-8880 - Fax: 407-278-1284 - www.millerlegg.com
 Cert. of Auth.: LC0000337 - L.A. of Record: John P. Gorman - LA-1237

STATE OF FLORIDA DEPARTMENT OF TRANSPORTATION		
ROAD NO.	COUNTY	FINANCIAL PROJECT ID
91	OSCEOLA	433915-2-52-01

TABULATION OF QUANTITIES / PLANT SCHEDULE

SHEET NO. LD-2

LANDSCAPE GENERAL NOTES:

THIS PROJECT WILL BE MAINTAINED BY FLORIDA'S TURNPIKE ENTERPRISE. THE CONTACT PERSON IS THE ENVIRONMENTAL SPECIALIST, GUY MURTONEN, PH. # 407-264-3875, EMAIL: GUY.MURTONEN@DOT.STATE.FL.US.COM.

THESE SPECIFICATIONS ARE IN ADDITION TO FDOT STANDARD SPECIFICATIONS AND DESIGN STANDARDS.

1) CERTIFICATIONS: THE LANDSCAPE CONTRACTOR SHALL BE PROPERLY REGISTERED WITH THE FLORIDA DEPARTMENT OF AGRICULTURE AND CONSUMER SERVICES DIVISION OF PLANT INDUSTRY AND BE A CERTIFIED LANDSCAPE CONTRACTOR BY THE FLORIDA NURSERY, GROWERS, AND LANDSCAPE ASSOCIATION AND BE A CERTIFIED ARBORIST BY THE INTERNATIONAL SOCIETY OF ARBORICULTURE. SUBMIT CERTIFICATIONS PRIOR TO THE PRE-CONSTRUCTION MEETING.

2) ITEMIZED COSTS: PRIOR TO THE PRE-CONSTRUCTION MEETING, SUBMIT TO THE ENGINEER A UNIT COST BREAKDOWN FOR EVERY ITEM OF WORK INCLUDED FOR THIS PROJECT.

3) PLANT REMOVAL: ALL PLANTS TO BE REMOVED SHALL BE CLEARLY MARKED AND APPROVED BY THE ENGINEER PRIOR TO ANY REMOVAL OPERATIONS.

4) PLAN DEVIATIONS: THE ENGINEER SHALL APPROVE ANY DEVIATIONS FROM THE PLANS THAT MAY AFFECT THE DESIGN INTENT. INSTALL NO MATERIALS THAT WILL BLOCK OR CREATE CONFLICTS WITH SIGNS, BILLBOARDS, LIGHTS, OVERHEAD AND UNDERGROUND UTILITIES, ACCESS WAYS, GATES, FIRE HYDRANTS, FPL RIGHT TREE/RIGHT PLACE SETBACKS, FDOT MAINTENANCE RATING PROGRAM AND ANSI Z-133 UTILITY CLEARANCE REQUIREMENTS. INSTALL TREES, PALMS AND SHRUBS A MINIMUM OF 7 FEET FROM ANY FIRE PROTECTION EQUIPMENT OR DEVICES. IMMEDIATELY NOTIFY THE ENGINEER WHEN ANY OF THESE ISSUES ARE ENCOUNTERED.

5) WEED CONTROL: AFTER THE BED LAYOUT HAS BEEN APPROVED BY THE ENGINEER, APPLY BOTH A COLORED POST-EMERGENT HERBICIDE AND A COLORED PRE-EMERGENT HERBICIDE TO ALL AREAS DESIGNATED FOR MULCH. HERBICIDE TREATMENT SHALL INCLUDE TWO (2) APPLICATIONS, 10 DAYS APART AND 4 DAYS PRIOR TO PLANTING. PRIOR TO THE PRE-CONSTRUCTION MEETING, SUBMIT PRODUCT AND APPLICATION PROCEDURES TO THE ENGINEER FOR APPROVAL. REMOVE JOHNSON GRASS CLUMPS WITHIN THE LIMITS OF MAINTENANCE FOR THIS CONTRACT. CLUMPS SHALL BE SPRAYED WITH GLYPHOSPHATE HERBICIDE AT LEAST FOUR DAYS PRIOR TO REMOVAL. REMOVE CLUMPS BY GRUBBING. ESTABLISH PERFORMANCE TURF WITHIN DISTURBED AREA.

6) SOIL BACKFILL MIXTURE: SOIL BACKFILL FOR THE INSTALLATION OF ALL PLANT MATERIALS SHALL BE A UNIFORM MIXTURE OF 25% DECOMPOSED COMPOST AND 75% EXISTING SITE SOIL, CLEANED FREE OF WEEDS AND ROCKS 1-1/2 INCH OR GREATER. PRIOR TO THE PRE-CONSTRUCTION MEETING, SUBMIT COMPOST MANUFACTURERS CERTIFIED ANALYSIS TO THE ENGINEER FOR APPROVAL. THE CONTRACTOR SHALL PAY TO HAVE COMPOST TESTED IF REQUESTED BY THE ENGINEER.

7) THE LOCATIONS OF PLANTS, AS SHOWN ON THESE PLANS, ARE APPROXIMATE. THE FINAL LOCATIONS MAY BE ADJUSTED TO ACCOMMODATE UNFORESEEN FIELD CONDITIONS, TO COMPLY WITH SAFETY SETBACKS, OR AS OTHERWISE DIRECTED OR APPROVED BY THE ENGINEER. FLAG ALL PROPOSED TREE AND PLANT BED LOCATIONS FOR THE ENGINEERS APPROVAL PRIOR TO PLANTING.

8) VERIFY LOCATION OF ALL UTILITIES PRIOR TO EXCAVATION. REFER TO UTILITY NOTES FOR FURTHER CLARIFICATION.

9) HAND WATERING WILL BE REQUIRED. A GENERAL WATERING SCHEDULE IS PROVIDED IN THE MAINTENANCE PLAN BUT IS ONLY INTENDED TO BE A GUIDELINE. DETERMINE THE ACTUAL WATERING SCHEDULE AND RATE TO ENSURE THE HEALTHY ESTABLISHMENT OF ALL PLANTS. PLANTS THAT DIE, OR EXCESSIVELY SHOCK DUE TO LACK OF WATER, MUST BE REPLACED AT NO COST TO THE DEPARTMENT. WATER FORCE FROM WATER TRUCK SHALL NOT BE APPLIED IN A MANNER WHICH WOULD DAMAGE PLANTS, NOR IN A MANNER WHICH WOULD REMOVE SOIL SAUCER RING OR MULCH AROUND EACH PLANT. ANY DAMAGE TO PLANT OR OTHER SURROUNDING ITEMS, EITHER BY WATER FORCE OR WATER TRUCK, IS THE RESPONSIBILITY OF THE CONTRACTOR TO REPAIR OR REPLACE.

10) ALL LANDSCAPE BEDS SHALL RECEIVE A UNIFORMLY APPLIED MULCH MATERIAL TO A MINIMUM THICKNESS OF - OVER THE ENTIRE PLANT BED, (EXCEPT WITHIN 6" OF TREE TRUNKS). INDIVIDUALLY PLANTED TREES (NOT WITHIN SHRUB BEDS) SHALL RECEIVE A MIN. 6" MULCH RING. MULCH TYPE WILL BE GRADE 'A' RECYCLED MULCH, EXCEPT BELOW PINE TREES AND WITHIN DRY PONDS WHERE PINE STRAW MUST BE UTILIZED.

11) WHERE EXISTING TREES ARE SHOWN TO REMAIN WITHIN PROPOSED PLANT BEDS, THERE WILL BE NO EXCAVATION FOR BED PREPARATION, OR SOIL ADDED WITHIN THE DRIPLINE OF THE CANOPY. ALL EXISTING VEGETATION THAT IS INTENDED TO REMAIN AND IS DAMAGED OR DESTROYED BY THE CONTRACTOR, DURING CONSTRUCTION OR WARRANTY PERIOD, WILL BE REPLACED WITH LIKE SIZE AND TYPE TO THE SATISFACTION OF THE ENGINEER AND AT THE CONTRACTOR'S SOLE EXPENSE. ALL CATEGORY #1 INVASIVE, EXOTIC VEGETATION AS PER THE FLORIDA EXOTIC PLANT PEST COUNCIL'S (FLEPPC) LATEST LIST WILL BE REMOVED FROM THE PROJECT LIMITS, WITHOUT DAMAGING NATIVE OR DESIRABLE VEGETATION TO REMAIN. AREAS OF KNOWN INVASIVE, EXOTIC VEGETATION ARE SHOWN ON THE PLANS, BUT ARE NOT INTENDED TO BE INCLUSIVE AND ARE APPROXIMATE. PRIOR TO STARTING WITH VEGETATION REMOVAL WORK, REVIEW ALL LOCATIONS IN THE FIELD WITH THE ENGINEER TO VERIFY VEGETATION TO BE REMOVED. SUBMIT PROPOSED METHODOLOGY FOR VEGETATION REMOVAL AT THE PRE-CONSTRUCTION MEETING. AT A MINIMUM, THIS METHODOLOGY MUST SHOW THE METHODS UTILIZED TO ENSURE THE FELLING OF LARGE TREES WILL NOT DAMAGE EXISTING LANDSCAPE TO REMAIN, ROADWAY STRUCTURES OR UTILITIES. FLUSH-CUT ALL TREES TO BE REMOVED. ALL TREE STUMPS AND ROOTS OVER 2" IN DIAMETER WILL BE GROUND TO A MINIMUM OF 12" BELOW GRADE TO ALLOW FOR PROPOSED PLANTING OR SODDING. ALL DEBRIS RESULTING FROM TREE REMOVAL WORK WILL BE REMOVED OFF-SITE AND DISPOSED IN ACCORDANCE WITH LOCAL CODES AND ORDINANCES. ALL EXPOSED AREAS WILL EITHER BE SODDED OR MULCHED AND THOSE QUANTITIES ARE ALSO PROVIDED ON THE PLANS.

12) LIMITED AREAS OF PROPOSED SOD ARE PROVIDED FOR RESTORING AREAS WHERE EXISTING VEGETATION WILL BE REMOVED. AND FOR INDIVIDUAL TREES NOT PLANTED IN MULCH BEDS. ALL OTHER AREAS OF EXISTING SOD THAT ARE DAMAGED BY THE CONTRACTOR DURING THE PERFORMANCE OF THIS WORK WILL BE PREPARED AT THE CONTRACTOR'S SOLE EXPENSE. (EXCEPT AS OTHERWISE NOTED).

13) PROVIDE A 10' MIN. SETBACK FROM ALL UNDERGROUND DRAINAGE PIPING LESS THAN 10' DEEP. PROVIDE A 15' MIN. SETBACK FROM CONCRETE DRAINAGE STRUCTURES (E.G., CATCH BASIN, MES, PAVED DITCH, ETC.). PROVIDE A MIN. 20' SETBACK FROM WATER ELEVATION ON ALL STORMWATER PONDS.

14) PROVIDE A 15' MIN. SETBACK FROM ALL LIGHT POLES, SIGN SUPPORT POLES, I.T.S. POLES AND OTHER FTE STRUCTURES.

15) THE CONTRACTOR SHALL BE RESPONSIBLE FOR REMOVING ALL EXCESS BACKFILL FROM ROOT BALL EXCAVATIONS IN ORDER TO MAINTAIN THE EXISTING GRADE AND DRAINAGE CHARACTERISTICS OF THE PRE-PLANTING CONDITION.

16) DATE PALMS SHALL BE DIAMOND CUT (CLASSIC CUT) USING HAND TOOLS PRIOR TO DELIVERY TO THE JOB SITE. THE USE OF MECHANICAL DEVICES SUCH AS CHAIN SAWS IS NOT ACCEPTABLE.

17) HOLES, GOUGES, DEPRESSIONS OR ABRUPT CHANGES IN DIAMETER SHALL BE UNACCEPTABLE.

18) NO PALMS WILL BE ACCEPTED SHOWING SIGNS OF CHAIN OR CABLE MARKS, EQUIPMENT SCARS OR OTHER SIGNS OF DAMAGE TO THE TRUNKS OR FOLIAGE.

19) DO NOT REMOVE LOWER FRONDS BEYOND 90 DEGREES FROM THE VERTICAL LINE OF THE TRUNK.

20) DATE PALM TREES SHALL MEET THE FOLLOWING MINIMUM REQUIREMENTS OR BE GRADED FLORIDA FANCY AS ESTABLISHED BY THE "GRADES AND STANDARDS FOR NURSERY PLANTS" AS PUBLISHED BY THE FLORIDA DEPARTMENT OF AGRICULTURE AND CONSUMER SERVICES, WHICHEVER IS GREATER.

- SPREAD 18 FEET
- NO MORE THAN 20% OF THE FRONDS MAY BE DAMAGED, CHLOROTIC OR SHOW SIGNS OF INSECT OR DISEASE DAMAGE.
- CALIPER AT 3 FEET ABOVE GRADE 16 INCHES
- ROOT BALL DIAMETER 48"
- ROOT BALL BACKFILL SHALL CONSIST OF IN-SITU SOILS WITH THE FOLLOWING ADDITIVES:
 - 1. WETTING AGENT
 - 2. FERTILIZER (#8 8-4-12 IMPROVED PALM FERTILIZER, SLOW RELEASE)

THE CONTRACTOR SHALL MAKE THE PALMS AVAILABLE FOR PRE-INSPECTION BY THE LANDSCAPE ARCHITECT AT A NURSERY THAT IS DULY LICENSED TO DO BUSINESS IN THE STATE OF FLORIDA AND THAT IS A BONDED DEALER IN AGRICULTURAL PRODUCTS AS DEFINED BY THE FLORIDA DEPARTMENT OF AGRICULTURE. THE PALMS SHALL BE PRE-INSPECTED AND QUALIFIED FOR USE IN A FULLY FINISHED STATE IN ADVANCE OF DELIVERY TO THE JOB SITE. PRIOR TO PRE-INSPECTION THE TRUNKS OF THE PALM SHALL BE DIAMOND CUT (CLASSIC CUT) UP TO WITHIN 2 FEET OF THE LOWEST LIVE FROND UTILIZING HAND TOOLS ONLY. THE INSPECTOR SHALL HAVE THE FULL RIGHT TO DENY OR REJECT FOR USE ANY PALM WHICH HE MAY FIND DOES NOT MEET THE SPECIFICATION AS SET FORTH HEREIN AND THE CONTRACTOR SHALL BE REQUIRED TO THEN MAKE OTHER INVENTORY AVAILABLE FOR SUCH PRE-INSPECTION.

21) CLEARING & GRUBBING:

- A. SELECTIVE CLEARING AND GRUBBING, INCLUDING ROOT SYSTEM (UNLESS IN PROXIMITY TO UNDERGROUND UTILITIES. CUT / REMOVE, GRIND / TREAT WITH HERBICIDE AS NECESSARY.
- B. CERTIFIED ARBORIST TO ID NATIVE SPECIES AND MARK PRIOR TO CLEARING AND GRUBBING ACTIVITIES FOR REVIEW BY ENGINEER AND LANDSCAPE ARCHITECT OF RECORD.
- C. EXISTING TREES WITHIN THE PROJECT LIMITS ARE TO REMAIN UNLESS OTHERWISE NOTED ON THE PLANS OR DIRECTED BY THE PROJECT ENGINEER. ALL TREE TAGS SHALL BE REMOVED FROM THE TREES AT THE END OF CONSTRUCTION OF THE PROJECT.

22) FOR PLANTING ON ALL SLOPES THAT ARE 1:3 OR STEEPER, REMOVE ALL EXCESS SOIL FROM THE EXCAVATION OF THE PLANT PIT AND SPREAD IN OTHER (NON SLOPED) AREAS OF THE SITE, AS DIRECTED BY THE ENGINEER. IN ADDITION, ALL DISTURBED AREAS, UP TO THE INSIDE OF THE TREE RING, SHALL BE SODDED WITH BAHIA SOD THAT IS PINNED TO PREVENT SLIPPAGE. BASELINE STATONING (WHEN SHOWN) IS PROVIDED FOR REFERENCE ONLY. SURVEY CONTROL HAS NOT BEEN PROVIDED.

23) SUBMITTALS: SUBMIT LIST OF NURSERIES WHERE PLANTS ARE TAGGED FOR THE PROJECT - INCLUDING CONTACT INFORMATION AND LOCATION, TO ENGINEER FOR APPROVAL OF PLANT MATERIAL PRIOR TO PURCHASE. SUBMIT PRODUCT CUT SHEETS OR SAMPLES OF ALL MATERIALS AND PRODUCTS SPECIFIED TO ENGINEER PRIOR TO DELIVERY TO SITE, INCLUDING BUT NOT LIMITED TO SOIL MIX, SOIL AMENDMENTS, FERTILIZER, PRE-EMERGENT HERBICIDE AND MULCH. SUBMIT MANUFACTURER'S LABELS AND INVOICE TO ENGINEER TO VERIFY THAT PRODUCTS INSTALLED MATCH CONTRACT DOCUMENTS.

24) CONTRACTOR TO SUBMIT MAINTENANCE OF TRAFFIC (M.O.T.) PLAN TO ENGINEER PRIOR TO STARTING WORK. THE M.O.T. PLAN WILL COMPLY WITH FLORIDA DEPARTMENT OF TRANSPORTATION (F.D.O.T.) DESIGN STANDARD INDEX 600 SERIES AND THE LATEST EDITION OF THE MANUAL ON UNIFORM TRAFFIC CONTROL DEVICES (M.U.T.C.D.). NO LANE CLOSURES WILL BE ALLOWED AS PART OF THIS PROJECT.

25) ALL EXISTING SIGNS ARE TO REMAIN. ANY SIGNS DAMAGED BY THE CONTRACTOR DURING CONSTRUCTION SHALL BE REPLACED AT NO COST TO THE DEPARTMENT.

26) REMOVE ALL JOHNSON GRASS CLUMPS WITHIN THE LIMITS OF MAINTENANCE FOR THIS CONTRACT. CLUMPS SHALL BE SPRAYED WITH GLYPHOSPHATE HERBICIDE AT LEAST 4 DAYS PRIOR TO REMOVAL. REMOVE CLUMPS BY GRUBBING ESTABLISH TURF WITHIN DISTURBED AREA BY SODDING WITH BAHIA SOD (PASPALUM NOTATUM).

EROSION CONTROL: (SEE STORMWATER POLLUTION PREVENTION NOTES).



REVISIONS				MILLER LEGG 631 South Orlando Ave., Suite 200 - Winter Park, Florida - 32789 407-629-8880 - Fax: 407-278-1264 - www.millerlegg.com Cert. of Auth.: LC0000337 - L.A. of Record: John P. Gorman- LA-1237	STATE OF FLORIDA DEPARTMENT OF TRANSPORTATION			LANDSCAPE GENERAL NOTES	SHEET NO.
DATE	DESCRIPTION	DATE	DESCRIPTION		ROAD NO.	COUNTY	FINANCIAL PROJECT ID		LD-3
					91	OSCEOLA	433915-2-52-01		

UTILITY NOTES:

- UTILITY INFORMATION SHOWN IN THE DRAWINGS IS SCHEMATIC IN NATURE AND SHOULD BE CONSIDERED A GRAPHIC DEPICTION ONLY. LOCATE ALL UTILITIES PRIOR TO EXCAVATION. NO UTILITY FACILITIES WILL BE REQUIRED TO BE RELOCATED DUE TO THE LANDSCAPE DESIGN. IF A UTILITY IS IN CONFLICT WITH THE PROPOSED LANDSCAPE, NOTIFY THE ENGINEER IMMEDIATELY AND THE LANDSCAPE WILL BE ADJUSTED ACCORDINGLY.
- NOTIFY UTILITY OWNERS THROUGH SUNSHINE STATE ONE CALL OF FLORIDA INC. (PH#811) OR CONTACTING WWW.CALLSUNSHINE.COM FIVE (5) FULL WORKING DAYS IN ADVANCE OF BEGINNING CONSTRUCTION ON JOB SITE. A REPRESENTATIVE SHALL BE PRESENT WHEN THE UTILITY COMPANY LOCATES THEIR FACILITIES. NOTE THAT TURNPIKE OWNED FACILITIES ARE NOT LOCATED BY SUNSHINE STATE ONE CALL.
- USE EXTREME CARE WHEN EXCAVATING NEAR UTILITIES AND LOCATE ALL UTILITIES BY HAND EXCAVATION. REPAIR ANY AND ALL DAMAGE TO UTILITIES WITH NO ADDITIONAL COST TO THE DEPARTMENT.

UTILITY PROVIDER	CONTACT	PHONE #	ADDRESS
CITY OF ST. CLOUD UTILITIES	CORY CLOUGH	407-957-7222	1300 9TH STREET, ST CLOUD, FL 34769
FLORIDA GAS TRANSMISSION-DAVENPORT	JOSEPH E. SANCHEZ	407-838-7171	2405 LUCIEN WAY, SUITE 200, WATLAND, FL 32751
LEVEL 3 COMMUNICATIONS LLC	JUDY HENRY	720-888-2061	1025 ELDORADO BLVD, BROOMFIELD, CO 80021
OSCEOLA COUNTY TRAFFIC	RICK COLE	407-343-7147	3850 OLD CANOE CREEK RD., ST CLOUD, FL 34769
CENTURY LINK	JEFF GRIFFEN	407-814-5344	33 N. MAIN ST., WINTER GARDEN, FL 34787
TOHO WATER AUTHORITY	EDWIN MATOS	407-944-5024	951 MARTIN LUTHER KING BLVD KISSIMMEE, FL 34741
ORLANDO UTILITES COMMISSION	RONALD HAWKINS	407-434-2569	6003 PERSHING AVE. ORLANDO, FL 32822
ATT/DISTRIBUTION	NATASHA ROBERSON	386-252-0662	900 N NOVA RD, DAYTONA, FL 32117
BRIGHT HOUSE NETWORKS	MARVIN USRY	407-532-8509	3767 ALL AMERICAN BLVD., ORLANDO, FL 32810

- TAKE RESPONSIBILITY FOR LOCATING ALL FTE OWNED UTILITIES OBTAIN LIST OF PREQUALIFIED LOCATE CONTRACTORS FROM FTE REPRESENTATIVE TO CONTRACT THESE SERVICES. ALL FACILITIES WILL BE CLEARLY MARKED PRIOR TO FLAGGING PLANT LOCATIONS. IF CONFLICTS EXIST WITH PROPOSED PLANTINGS NOTIFY THE FTE REPRESENTATIVE IMMEDIATELY. THE CONTRACTOR SHALL TAKE EXTREME PRECAUTION TO AVOID IMPACTING FTE OWNED UTILITIES AND SHALL ASSUME ALL RISK FOR THEIR MAINTENANCE AND REPAIR. PROVIDE 6' MIN. SETBACK FROM ALL BURIED ITS CABLE OR ELECTRIC.

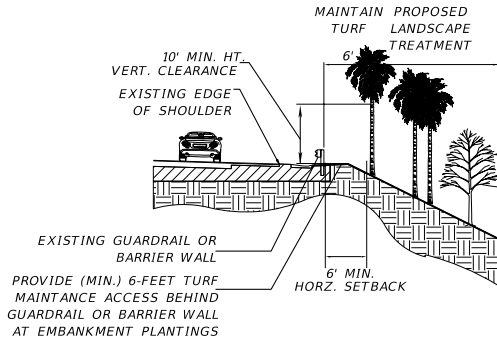
THE CONTACT INFORMATION IS PROVIDED FOR REFERENCE ONLY:

- RAFAEL SENA, TURNPIKE ITS - 954-934-1624 (OFFICE) 954-551-0950 (CELL)
- JOE STEPHENSON, TURNPIKE ITS MAINTENANCE - (407) 934-1622
- BERNARD MILLS, TURNPIKE LIGHTING - (407) 264-3326

COMPLY WITH FLORIDA STATUTES UNDERGROUND FACILITY DAMAGE PREVENTION AND SAFETY ACT, FS556.

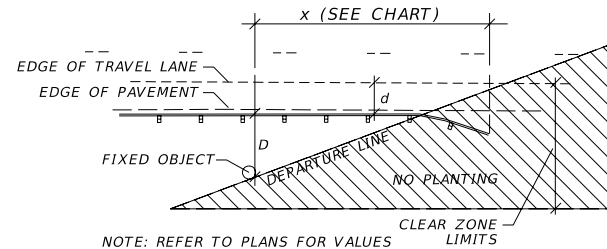
GENERAL NOTES:

- BASILINE STATIONING IS SHOWN FOR REFERENCE ONLY. SURVEY CONTROL HAS NOT BEEN PROVIDED.
- ROADWAY RELATED SETBACKS ARE MEASURED FROM THE EDGE OF TRAVEL LANE EXCEPTION: HORIZONTAL SIGHT OFFSET (HSO) IS MEASURED FROM CENTERLINE OF TRAVEL LANE.
- THE INSTALLATION OF PLANT MATERIALS SHALL BE IN CONFORMANCE WITH FDOT STANDARD INDEX 544 AND STANDARD SPECIFICATIONS FOR ROAD AND BRIDGE CONSTRUCTION.
- WHERE FACILITIES ARE OWNED BY PPL, THEN COMPLY WITH THEIR GUIDELINES AS APPLICABLE, INCLUDING REQUIRED SETBACKS TO TRANSFORMERS.
- NO TREES OR PALMS SHALL BLOCK LIGHTS FROM HITTING ROADWAY OR VEHICULAR USE AREAS. SETBACKS MAY BE REDUCED ON THE BACK SIDE OF LIGHT POLES, PROVIDED LIGHTING IS NOT BLOCKED.
- ENSURE THAT ITS AND SECURITY CAMERAS ARE ALSO NOT BLOCKED. SETBACKS MAY BE REDUCED ON THE BACK SIDE OF ITS POLES, PROVIDED CAMERA VIEWS ARE NOT BLOCKED.



TYPICAL BACK OF GUARDRAIL PLANTING DETAIL

N.T.S.



NOTE: REFER TO PLANS FOR VALUES

DEPARTURE ANGLE GUIDE DETAIL

N.T.S.

D (feet from face of guardrail to back of obstruction)	x including 12.5' departure angle (feet - distance from end of guardrail)	D (feet from face of guardrail to back of obstruction)	x including 12.5' departure angle (feet - distance from end of guardrail)
7.0	103.50	22.0	298.50
7.5	110.00	22.5	305.00
8.0	116.50	23.0	311.50
8.5	123.00	23.5	318.00
9.0	129.50	24.0	324.50
9.5	136.00	24.5	331.00
10.0	142.50	25.0	337.50
10.5	149.00	25.5	344.00
11.0	155.50	26.0	350.50
11.5	162.00	26.5	357.00
12.0	168.50	27.0	363.50
12.5	175.00	27.5	370.00
13.0	181.50	28.0	376.50
13.5	188.00	28.5	383.00
14.0	194.50	29.0	389.50
14.5	201.00	29.5	396.00
15.0	207.50	30.0	402.50
15.5	214.00	30.5	409.00
16.0	220.50	31.0	415.50
16.5	227.00	31.5	422.00
17.0	233.50	32.0	428.50
17.5	240.00	32.5	435.00
18.0	246.50	33.0	441.50
18.5	253.00	33.5	448.00
19.0	259.50	34.0	454.50
19.5	266.00	34.5	461.00
20.0	272.50	35.0	467.50
20.5	279.00	35.5	474.00
21.0	285.50	36.0	480.50
21.5	292.00		

REVISIONS		REVISIONS	
DATE	DESCRIPTION	DATE	DESCRIPTION

MILLER LEGG
 631 South Orlando Ave., Suite 200 - Winter Park, Florida - 32789
 407-629-8880 - Fax: 407-278-1264 - www.millerlegg.com
 Cert. of Auth.: LC0000337 - L.A. of Record: John P. Gorham - LA-1237

STATE OF FLORIDA DEPARTMENT OF TRANSPORTATION		
ROAD NO.	COUNTY	FINANCIAL PROJECT ID
91	OSCEOLA	433915-2-52-01

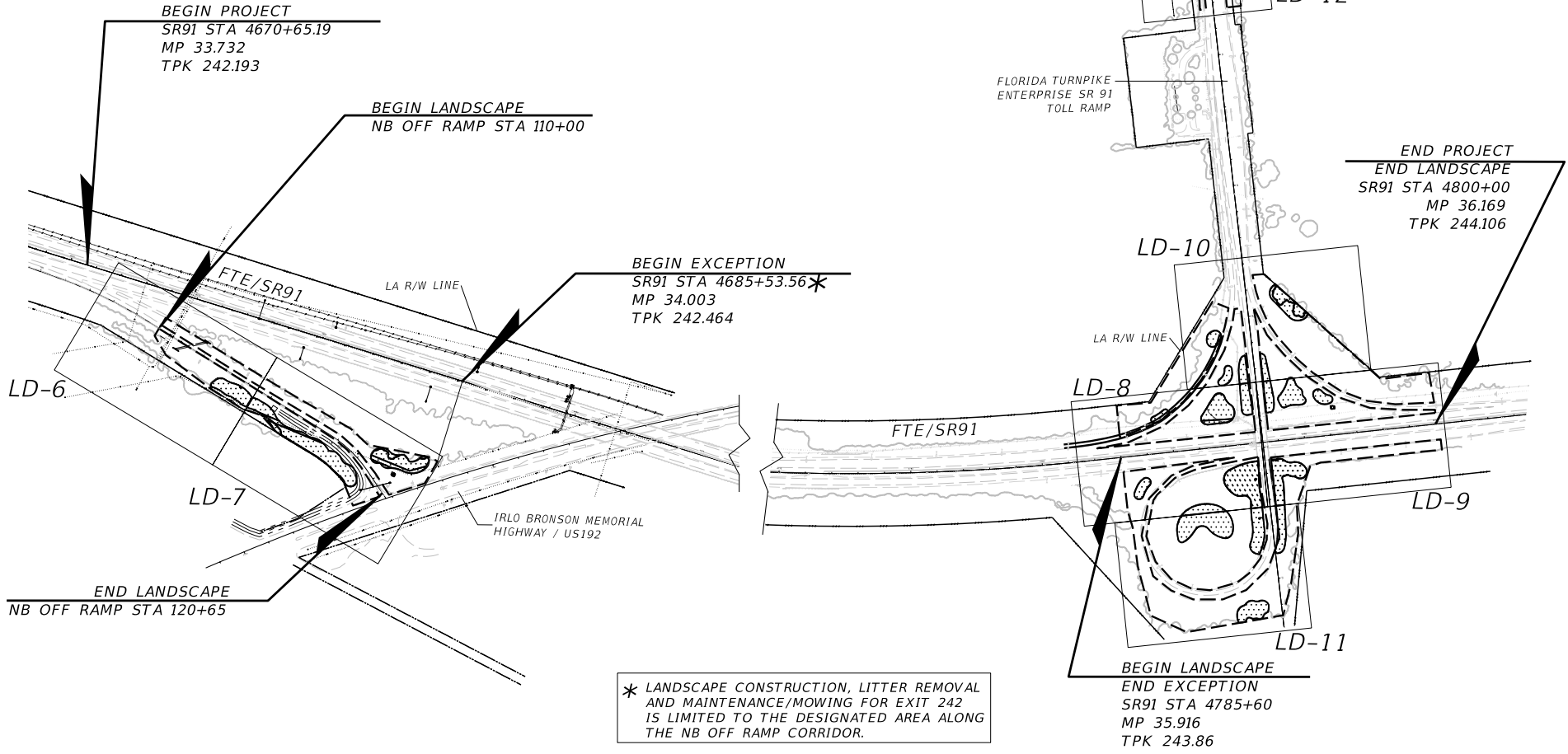
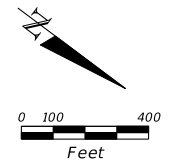
LANDSCAPE DETAILS

SHEET NO.
LD-4

LEGEND:

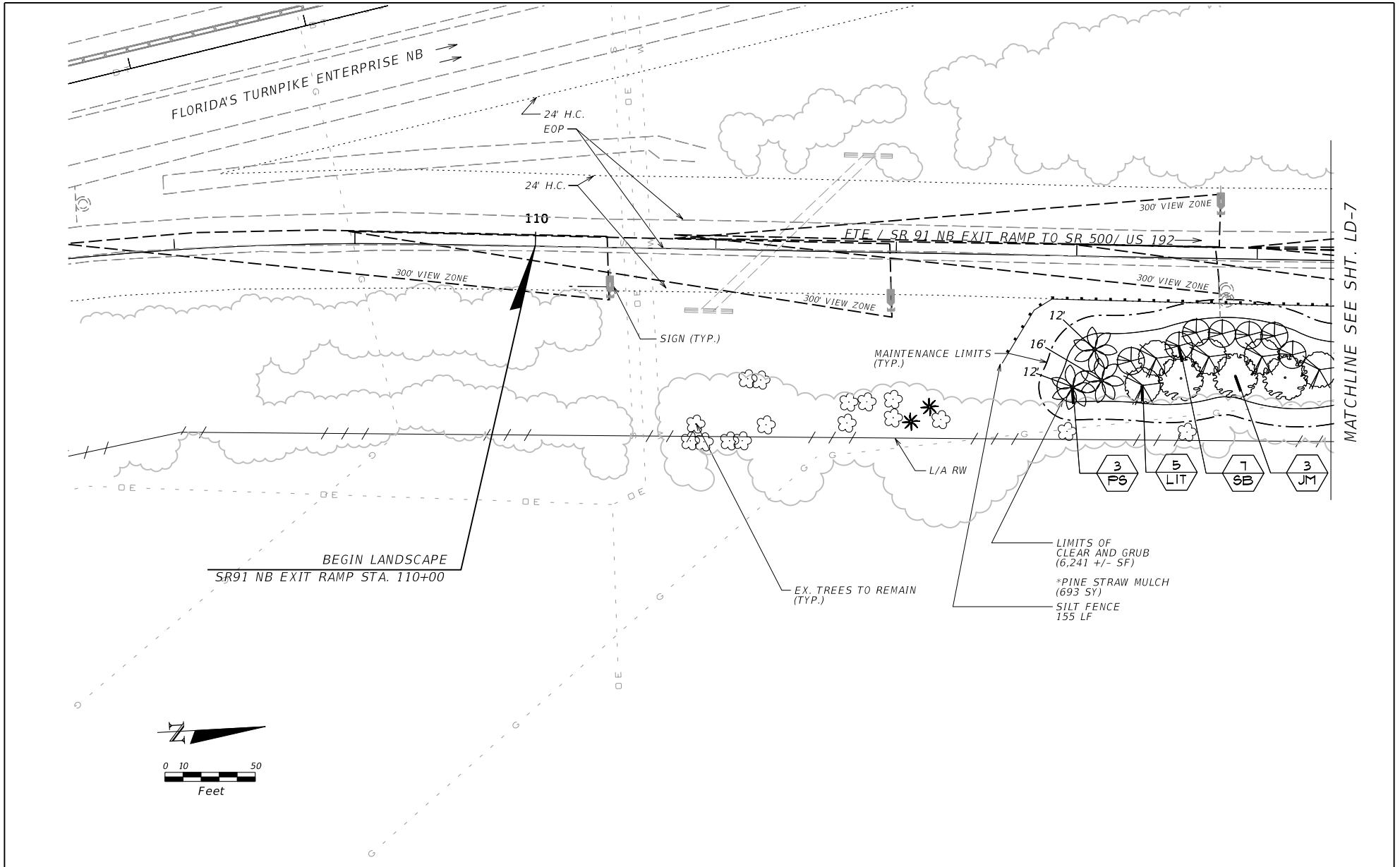
 LANDSCAPE AREA: 25.29 AC
LIMITS OF LITTER REMOVAL

 MAINTENANCE/MOWING LIMITS
REFER TO LD-6 THRU LD-12
AREA: 4.36 AC

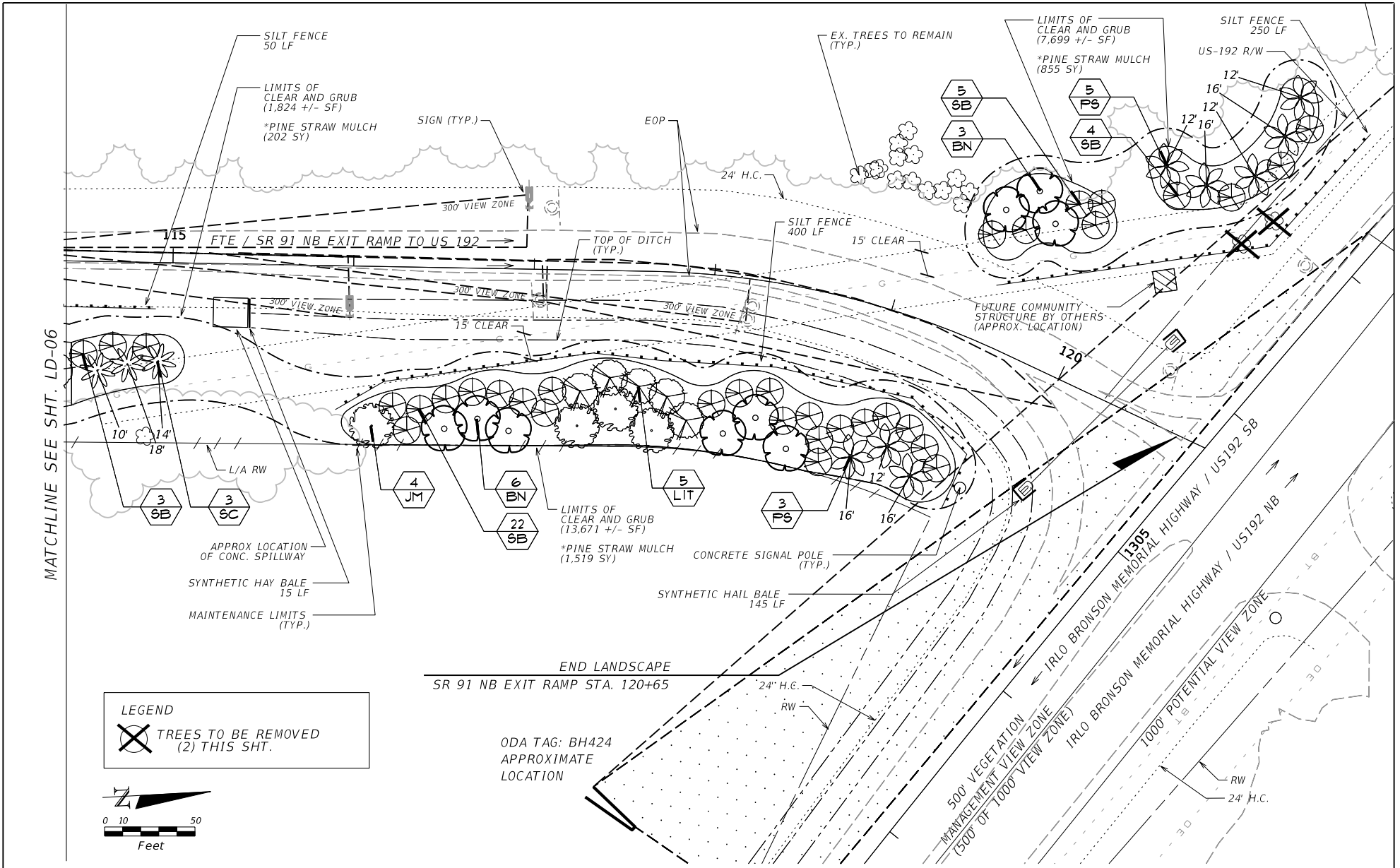


* LANDSCAPE CONSTRUCTION, LITTER REMOVAL AND MAINTENANCE/MOWING FOR EXIT 242 IS LIMITED TO THE DESIGNATED AREA ALONG THE NB OFF RAMP CORRIDOR.


REVISIONS				MILLER LEGG 631 South Orlando Ave., Suite 200 - Winter Park, Florida - 32789 407-629-8880 - Fax: 407-278-1264 - www.millerlegg.com Cert. of Auth.: LCM000337 - L.A. of Record: John P. Gorham - LA-1237	STATE OF FLORIDA DEPARTMENT OF TRANSPORTATION			PLAN LAYOUT/ MAINTENANCE PLAN	SHEET NO. LD-5
DATE	DESCRIPTION	DATE	DESCRIPTION		ROAD NO.	COUNTY	FINANCIAL PROJECT ID		
				91	OSCEOLA	433915-2-52-01			

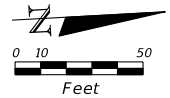


REVISIONS				MILLER LEGG 631 South Orlando Ave., Suite 200 - Winter Park, Florida - 32789 407-629-8880 - Fax: 407-278-1264 - www.millerlegg.com Cert. of Auth.: LCM000337 - L.A. of Record: John P. Gorham - LA-1237	STATE OF FLORIDA DEPARTMENT OF TRANSPORTATION			LANDSCAPE PLAN	SHEET NO.
DATE	DESCRIPTION	DATE	DESCRIPTION		ROAD NO.	COUNTY	FINANCIAL PROJECT ID		LD-6
				91	OSCEOLA	433915-2-52-01			



MATCHLINE SEE SHT. LD-06

LEGEND
 TREES TO BE REMOVED
 (2) THIS SHT.



END LANDSCAPE
 SR 91 NB EXIT RAMP STA. 120+65

ODA TAG: BH424
 APPROXIMATE
 LOCATION

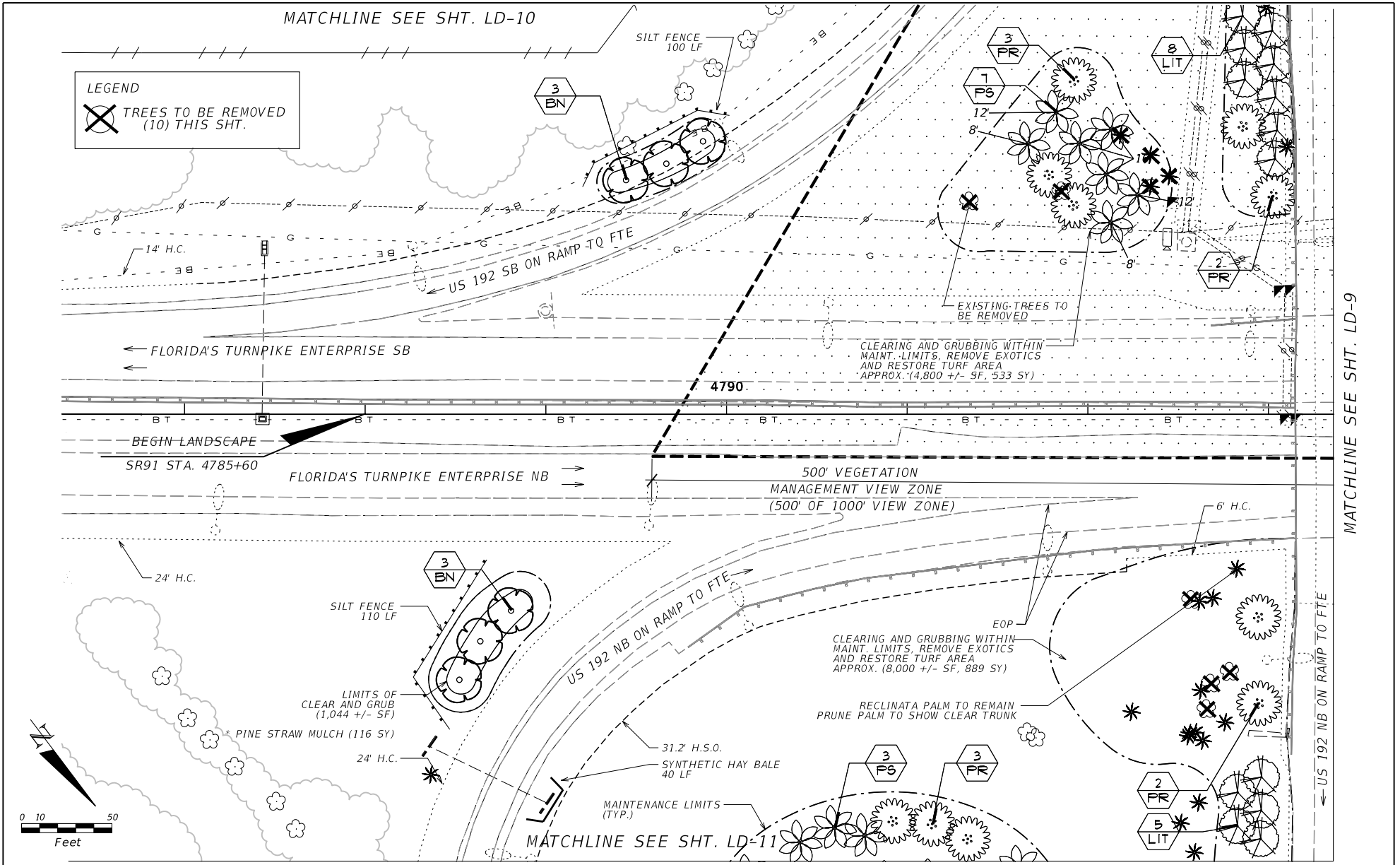
REVISIONS	
DATE	DESCRIPTION

MILLER LEGG
 631 South Orlando Ave., Suite 200 - Winter Park, Florida - 32789
 407-629-8880 - Fax: 407-278-1264 - www.millerlegg.com
 Cert. of Auth.: LCM000337 - L.A. of Record: John P. Gorham - LA-1237

STATE OF FLORIDA DEPARTMENT OF TRANSPORTATION		
ROAD NO.	COUNTY	FINANCIAL PROJECT ID
91	OSCEOLA	433915-2-52-01

LANDSCAPE PLAN

SHEET NO.
LD-7



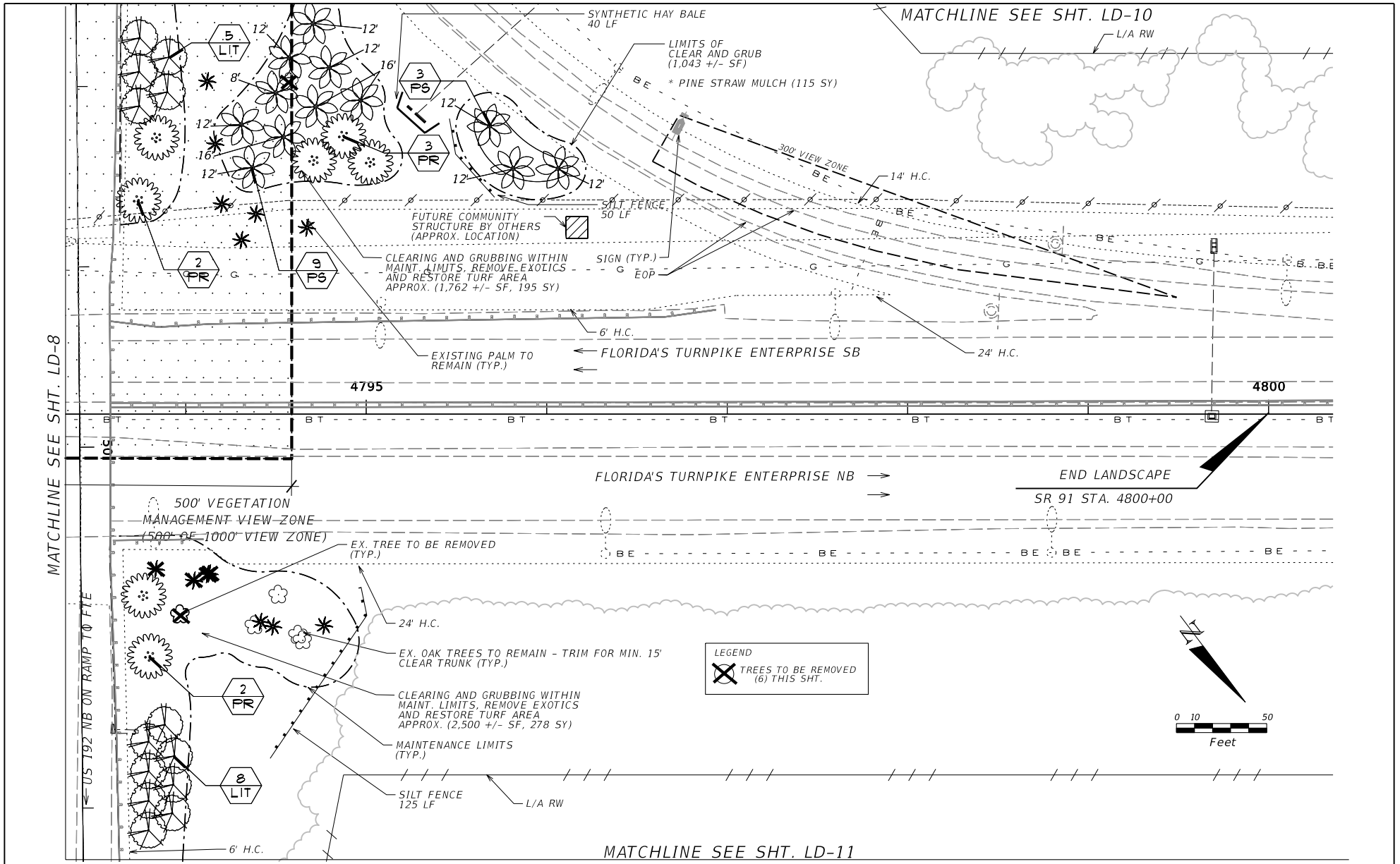
REVISIONS			
DATE	DESCRIPTION	DATE	DESCRIPTION

MILLER LEGG
 631 South Orlando Ave., Suite 200 - Winter Park, Florida - 32789
 407-629-8880 - Fax: 407-278-1264 - www.millerlegg.com
 Cert. of Auth.: LCM000337 - L.A. of Record: John P. Gorham - LA-1237

STATE OF FLORIDA DEPARTMENT OF TRANSPORTATION		
ROAD NO.	COUNTY	FINANCIAL PROJECT ID
91	OSCEOLA	433915-2-52-01

LANDSCAPE PLAN

SHEET NO.
LD-8



REVISIONS			
DATE	DESCRIPTION	DATE	DESCRIPTION

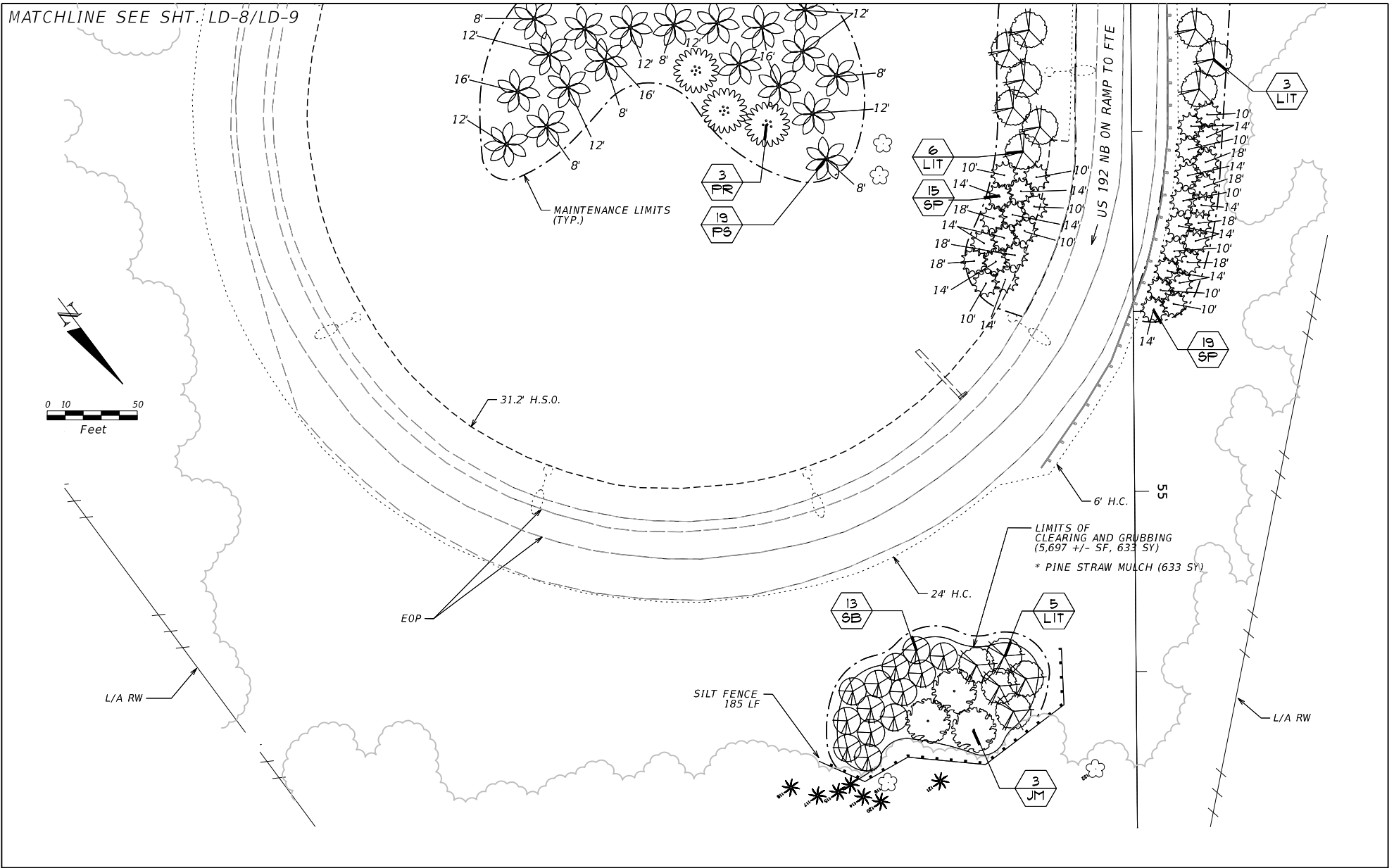
MILLER LEGG
 631 South Orlando Ave., Suite 200 - Winter Park, Florida - 32789
 407-629-8880 - Fax: 407-278-1264 - www.millerlegg.com
 Cert. of Auth.: LCM000337 - L.A. of Record: John P. Gorham - LA-1237

STATE OF FLORIDA DEPARTMENT OF TRANSPORTATION		
ROAD NO.	COUNTY	FINANCIAL PROJECT ID
91	OSCEOLA	433915-2-52-01

LANDSCAPE PLAN

SHEET NO.
LD-9

MATCHLINE SEE SHT. LD-8/LD-9



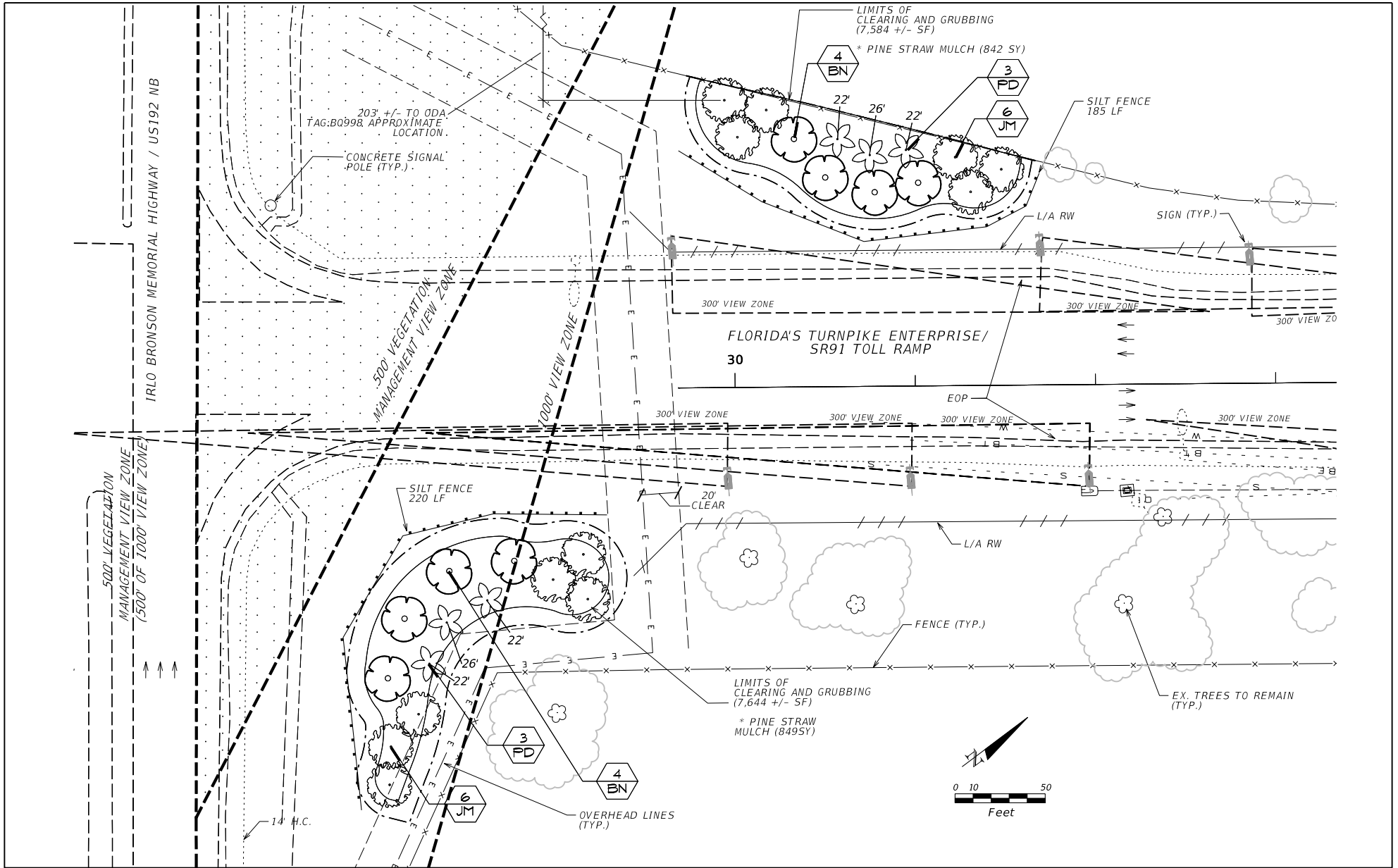
REVISIONS	
DATE	DESCRIPTION

MILLER LEGG
 631 South Orlando Ave., Suite 200 - Winter Park, Florida - 32789
 407-629-8880 - Fax: 407-278-1264 - www.millerlegg.com
 Cert. of Auth.: LCM000337 - L.A. of Record: John P. Gorham - LA-1237

STATE OF FLORIDA DEPARTMENT OF TRANSPORTATION		
ROAD NO.	COUNTY	FINANCIAL PROJECT ID
91	OSCEOLA	433915-2-52-01

LANDSCAPE PLAN

SHEET NO.
LD-11



REVISIONS	
DATE	DESCRIPTION

MILLER LEGG
 631 South Orlando Ave., Suite 200 - Winter Park, Florida - 32789
 407-629-8880 - Fax: 407-278-1264 - www.millerlegg.com
 Cert. of Auth.: LCO000337 - L.A. of Record: John P. Gorham - LA-1237

STATE OF FLORIDA DEPARTMENT OF TRANSPORTATION		
ROAD NO.	COUNTY	FINANCIAL PROJECT ID
91	OSCEOLA	433915-2-32-01

LANDSCAPE PLAN

SHEET NO.
LD-12

LANDSCAPE TRAFFIC CONTROL NOTES:

NOTE THAT NO LANE CLOSURES ARE ANTICIPATED FOR THIS PROJECT. HOWEVER, IN CASE ANY CLOSURES ARE NECESSARY FOR WHATEVER REASON, THE FOLLOWING NOTES SHALL APPLY.

1. THE REGULATORY SPEED USED FOR MOT CALCULATIONS FOR EACH FACILITY ARE NOTED BELOW. MODIFICATIONS TO THE REGULATORY SPEED MAY REQUIRE RESUBMITTAL OF THE MOT PLAN.

TURNPIKE FACILITY NAME	REGULATORY SPEED
SR91	70 MPH
RAMP X	X MPH

2. PREPARE AN INCIDENT MANAGEMENT PLAN (IMP) FOR EMERGENCY VEHICLE ACCESS WHILE TEMPORARY BARRIER WALL IS BEING UTILIZED ON THE PROJECT. SUBMIT PLAN 21 DAYS PRIOR TO THE INSTALLATION OF TEMPORARY BARRIER WALL ON SITE.

3. FHP TROOP K SHALL SERVE AS THE POINT OF CONTACT AND SCHEDULING FOR ALL TRAFFIC CONTROL NEEDS ON THE TURNPIKE. MAKE PROVISIONS FOR A LAW ENFORCEMENT OFFICER FOR TRAFFIC CONTROL AT SPECIFIC LOCATIONS CALLED OUT IN THE PLANS, BY CONTACTING THE REGIONAL DISTRICT.

4. MAKE PROVISIONS FOR A LAW ENFORCEMENT OFFICER (FHP TROOP K) FOR ALL LANE CLOSURES AND/OR AS DIRECTED BY THE ENGINEER. ALL COSTS ARE INCLUDED IN 102-14. IF THE CONTRACTOR ELECTS TO USE OFFICERS FOR ANY OTHER ACTIVITY, INCLUDE THE COST IN A LUMP SUM MOT, PAY ITEM 102-1.

5. ACCELERATION AND DECLARATION OF ALL CONSTRUCTION VEHICLE WITHIN A TRAVEL LANE IS PROHIBITED. CONTRACTOR SHALL MAKE PROVISIONS FOR CONSTRUCTION VEHICLE TO THE WORK AREAS INCLUDING MATERIAL DELIVERY. LANE CLOSURES MAY WARRANTED FOR CERTAIN CONSTRUCTION VEHICLES TO ACCESS THE WORK AREAS. COORDINATE ALL ACCESS LOCATIONS WITH THE ENGINEER.

6. ALL LANE CLOSURES AND CONSTRUCTION ACTIVITIES MUST COMPLY WITH PROVISIONS AS OUTLINED IN FLORIDA'S TURNPIKE ENTERPRISE "LANE CLOSURE POLICY AND PROCEDURE". THIS POLICY IS AVAILABLE AT THE END OF CHAPTER 10, VOLUME 1 OF THE TURNPIKE PLANS PREPARATION AND PRACTICES HANDBOOK (TPPPH), WHICH CAN BE ELECTRONICALLY FOUND AT [HTTP://DESIGN.FLORIDATURNPIKE.COM](http://design.floridaturnpike.com) WITHIN THE DESIGN MANUALS SECTION, OR BY CONTACTING THE TRAFFIC OPERATIONS CENTER IN POMPANO AT (561) 975-4855. COORDINATE ALL LANE CLOSURES REQUESTS ON TURNPIKE ENTERPRISE FACILITIES WITH THE TRAFFIC OPERATIONS CENTER. REQUESTS ARE TO BE SUBMITTED TWO (2) WEEKS IN ADVANCE OF ANY LANE CLOSURES. IN ADDITION, ALL LANE CLOSURES MUST BE COORDINATED WITH PUBLIC INFORMATION OFFICER AND TOLL OPERATIONS AS WELL AS LOCAL SPECIAL EVENTS.

SIGNING AND PAVEMENT MARKINGS:

1. THE CONTRACTOR SHALL MAINTAIN ALL SIGNS IN THE PROXIMITY OF THE PROPOSED LANDSCAPING DURING CONSTRUCTION. ANY SIGN/S THAT ARE DAMAGED SHALL BE REPLACED BY THE CONTRACTOR AT HIS OWN EXPENSE.

2. AS APPROVED BY THE ENGINEER, THE CONTRACTOR SHALL COVER WORK ZONE SIGNS WHEN CONDITIONS NO LONGER WARRANT THEIR USE. COST OF COVERING AND UNCOVERING THE SIGNS, DAILY MAINTENANCE AND MONITORING SHALL BE INCLUDED IN MAINTENANCE OF TRAFFIC PAY ITEM NUMBER 102-1.

3. CONTRACTOR SHALL REMOVE, RELOCATE OR COVER ANY EXISTING OR PROPOSED SIGNS THAT CONFLICT WITH THE TRAFFIC CONTROL PLANS. WHEN THE CONFLICT NO LONGER EXISTS, THE CONTRACTOR SHALL RESTORE THE SIGNS TO THEIR ORIGINAL POSITION. COST OF TEMPORARILY REMOVING, RELOCATING, COVERING AND RESTORING THE SIGNS SHALL BE INCLUDED IN MAINTENANCE OF TRAFFIC PAY ITEM NUMBER 102-1.

4. UNIFORMED, OFF-DUTY LAW ENFORCEMENT OFFICERS CAN BE USED ONLY AS APPROVED BY THE ENGINEER AND USE IS LIMITED TO CONSTRUCTION OPERATIONS FOR SETTING AND REMOVING TRAFFIC CONTROL DEVICES, NIGHT WORK, MOVING OPERATIONS, OR OTHER SITUATIONS SPECIFICALLY APPROVED BY THE ENGINEER. ALL COSTS FOR THE OFFICER(S) SHALL BE INCLUDED IN THE TRAFFIC CONTROL OFFICER PAY ITEM NUMBER 102-14.

LANDSCAPE PLAN SPECIFIC NOTES:

1. THE PROPOSED LANDSCAPE WORK IS OCCURRING OUTSIDE THE CLEAR ZONE AS DETAILED IN THE PLAN.

2. FOR WORK OUTSIDE THE SHOULDER, APPLY APPLICABLE PORTIONS OF FDOT INDEXES 601 AND 611. IF NECESSARY, FOR WORK ON SHOULDER, UTILIZE APPLICABLE PORTIONS OF FDOT INDEXES 602 AND 612.

3. THE CONTRACTOR SHALL NOTIFY UTILITY OWNERS THROUGH SUNSHINE ONE CALL OF FLORIDA INC. (811) AND TWO (2) BUSINESS DAYS IN ADVANCE OF BEGINNING CONSTRUCTION ON THE JOB SITE. A CONTRACTOR'S REPRESENTATIVE SHALL BE PRESENT WHEN THE UTILITY COMPANY LOCATES THEIR FACILITIES.

REVISIONS

DATE	DESCRIPTION	DATE	DESCRIPTION

MILLER LEGG

631 South Orlando Ave., Suite 200 - Winter Park, Florida - 32789
 407-629-8880 - Fax: 407-278-1264 - www.millerlegg.com
 Cert. of Auth.: LC0000337 - L.A. of Record: John P. Gotham - LA-1237

STATE OF FLORIDA
 DEPARTMENT OF TRANSPORTATION

ROAD NO.	COUNTY	FINANCIAL PROJECT ID
91	OSCEOLA	433915-2-52-01

TRAFFIC CONTROL NOTES

SHEET NO.

LD-14

LANDSCAPE MAINTENANCE PLAN FOR THE THREE (3) YEAR ESTABLISHMENT PERIOD

MAINTENANCE SCHEDULE																
WATERING APPLICATIONS	AMOUNT	FREQUENCY (1ST YR.)										CYCLES			REMARKS	
		DAILY FOR 60 DAYS	3 TIMES/WEEK FOR 5 MONTHS	WEEKLY FOR 5 MONTHS FINISH OF 1ST YR.	ONCE/2 WEEKS	1ST YR	2ND YR	3RD YR.	2ND & 3RD YR.	1ST YR	2ND YR	3RD YR.				
SPECIAL*	40 GAL.	DAILY FOR 60 DAYS	3 TIMES/WEEK FOR 5 MONTHS	WEEKLY FOR 5 MONTHS FINISH OF 1ST YR.	ONCE/2 WEEKS	140	26	26							SCHEDULE PROVIDED IS PROVIDED AS MINIMUM FREQUENCY UTILIZE TEMPORARY IRRIGATION SYSTEM (OR HAND WATERING) FOR TREES AND PALMS FOR HEALTHY ESTABLISHMENT AND OPTIMUM GROWTH, PROTECTION FROM DROUGHT AND TO MAINTAIN FLORIDA #1 GRADE OR BETTER PROVIDE HAND WATERING IF TEMPORARY IRRIGATION SYSTEM IS NOT OPERATIONAL OR INADEQUATE.	
STANDARD	25 GAL.	DAILY FOR 30 DAYS	3 TIMES/WEEK FOR 5 MONTHS	WEEKLY FOR REMAINING 6 MONTHS	ONCE/2 WEEKS	114	26	26								
WATER SAUCERS, STAKES AND GUYS	ACTIVITIES IN 1ST YEAR ONLY										N/A	N/A	MONITOR AND REPAIR WATER SAUCERS, STAKES AND GUYS THROUGHOUT THE FIRST YEAR OF THE ESTABLISHMENT PERIOD. MAINTAIN TREES AND PALMS UPRIGHT, WITH THE STAKES AND GUYS AS PER FDOT DESIGN STANDARD 544. ALL STAKES AND GUYS SHALL BE REMOVED FROM AND GUYS TREES AND PALMS PRIOR TO THE END OF THE FIRST YEAR OF THE ESTABLISHMENT PERIOD, UNLESS OTHERWISE DIRECTED BY ENGINEER.			
MAINTENANCE OPERATION	MINIMUM MAINTENANCE CYCLES												MIN. CYCLES			
	JAN	FEB	MAR	APR	MAY	JUN	JUL	AUG	SEP	OCT	NOV	DEC	PER YR	TOTAL		
LITTER REMOVAL	1	1	1	2	2	2	2	2	2	1	1	1	18	54	REMOVE ALL LITTER BEFORE EACH MOWING CYCLE. REMOVE LITTER IN ALL TURF AND LANDSCAPE AREAS WITHIN THE MAINTENANCE LIMITS. LITTER PICK UP SHALL INCLUDE REMOVAL OF FALLEN PALM FRONDS AND BRANCHES.	
MOWING	1	1	1	2	2	2	2	2	2	1	1	1	18	54	MOW PER FDOT STANDARDS FOR MOWING HEIGHT ROADWAY: SIX (6) INCH HEIGHT. MAINTENANCE (AND MOWING) LIMITS SHOWN ON LANDSCAPE PLANS.	
EDGING			1			1			1	1	1	1	6	18	CHEMICAL HERBICIDE EDGING CAN BE USED ON TREE RINGS AND PLANTING BEDS.	
FERTILIZATION (PALMS)			1			1						1	4	4*	APPLY 8-2-12 'PALM SPECIAL' FERTILIZER WITH 100% SLOW RELEASE FORM OF NITROGEN AND MICROS AND WATER SOLUBLE CHELATES AND SULFATES, APPLY AS PER MANUFACTURER'S RECOMMENDED RATES. ANY TREES OR PALMS THAT SHOW SIGNS OF GENERAL, OVERALL CHLOROSIS AT ANY TIME DURING THE CONSTRUCTION OR ESTABLISHMENT PERIOD MUST BE REPLACED. FERTILIZE PALMS IN THE 1ST YR. OF 3 YR. MAINTENANCE PERIOD.	
FERTILIZATION (TREES)			1						1				2	6		
MULCHING	TOP DRESS MULCH ONE TIME PER YEAR												N/A	N/A	MAINTAIN MINIMUM OF THREE (3) INCH COMPACTED DEPTH OF MULCH THROUGHOUT THE ESTABLISHMENT PERIOD FOR ALL MULCH BEDS AND TREE RINGS. SPOT CHECK DURING EDGING CYCLES AND REPLENISH TO MAINTAIN THREE (3) INCH DEPTH THROUGHOUT THE ESTABLISHMENT PERIOD. INSPECT SLOPES AFTER MAJOR RAIN EVENTS AND CORRECT DEFICIENCIES.	
WEEDING	1	1	1	2	2	2	2	2	2	1	1	1	18	54	ALL MULCH BEDS AND TREE RINGS SHALL BE KEPT WEED FREE. HAND REMOVE ANY WEEDS ABOVE TWELVE (12") HEIGHT PRIOR TO APPLYING HERBICIDE SPRAY. APPLY GLYPHOSATE POST-EMERGENT CHEMICAL HERBICIDE WITH PIGMENTED TRACER AND SEDGE SPECIFIC POST EMERGENT CHEMICAL HERBICIDE, AS PER MANUFACTURER'S SPECIFICATIONS BY A LICENSED OPERATOR.	
INSECT, PEST AND DISEASE CONTROL			1			1							1	4	4*	INSPECT ALL TREES, PALMS AND SHRUBS FOR PEST INFESTATION AND DISEASE ON A MONTHLY BASIS. APPLY FUNGICIDE ON PHOENIX PALMS, TRUNK DRENCH WITH PESTICIDES LISTED IN THE SCHEDULE PER MANUFACTURER'S SPECIFICATIONS. ALL MATERIALS AND PERFORMANCE OF WORK SHALL MEET STATE AND FEDERAL HEALTH AND SAFETY LAWS. ALL CHEMICALS SHALL BE APPLIED BY A LICENSED OPERATOR WITH THE FOLLOWING QUALIFICATIONS: CORE, 6 ROW, 3 ORNAMENTAL AND TURF. SA AQUATIC. * PALMS SOIL DRENCH AND TRUNK DRENCH ONLY IN 1ST YR.
PRUNING (TREES AND PALMS)			1										1	3	PRUNE TREES TO REMOVE ALL SUCKERS, DEAD, DISEASED OR BROKEN BRANCHES, TO MAINTAIN HORIZONTAL CLEARANCE PER FDOT SPECIFICATIONS SECTION 546, IMPROVE STRUCTURAL DEFICIENCIES AND TO INCREASE WIND RESISTANCE. TREE PRUNING SHALL CONFORM TO ANSI A300 STANDARDS FOR TREE TRIMMING. ALLOW SABAL PALMS TO SELF SHED FRONDS. TRIM BISMARCK AND DATE PALM FRONDS ONLY AFTER THEY ARE 100% DEAD (NECROTIC) AND HANGING BELOW THE 90 DEGREE HORIZONTAL.	

NOTES FOR ESTABLISHMENT PERIOD:

1) 36 MONTH ESTABLISHMENT PERIOD. BEGINS UPON FINAL ACCEPTANCE DATE OF THE PROJECT BY FLORIDA'S TURNPIKE ENTERPRISE (FTE). REFER TO STANDARD MAINTENANCE SPECIAL PROVISIONS, LANDSCAPE SECTION 580 FOR MORE INFORMATION. REFER TO PLANS FOR MAINTENANCE LIMITS.

LEGEND: AC= ACRE, MIN.= MINIMUM, N/A: NOT APPLICABLE, NO.: NUMBER, YR= YEAR.
* SPECIAL WATERING REQUIREMENTS APPLY TO ALL BISMARCK AND PHOENIX PALMS ONLY. GALLONS PER TREE AND RUN TIMES MUST BE SET ACCORDINGLY.

REVISIONS				MILLER LEGG 631 South Orlando Ave., Suite 200 - Winter Park, Florida - 32789 407-629-8880 - Fax: 407-278-1264 - www.millerlegg.com Cert. of Auth.: LC0000337 - L.A. of Record: John P. Gorham - LA-1237	STATE OF FLORIDA DEPARTMENT OF TRANSPORTATION			LANDSCAPE MAINTENANCE PLAN	SHEET NO.
DATE	DESCRIPTION	DATE	DESCRIPTION		ROAD NO.	COUNTY	FINANCIAL PROJECT ID		
					91	OSCEOLA	433915-2-52-01		LD-15